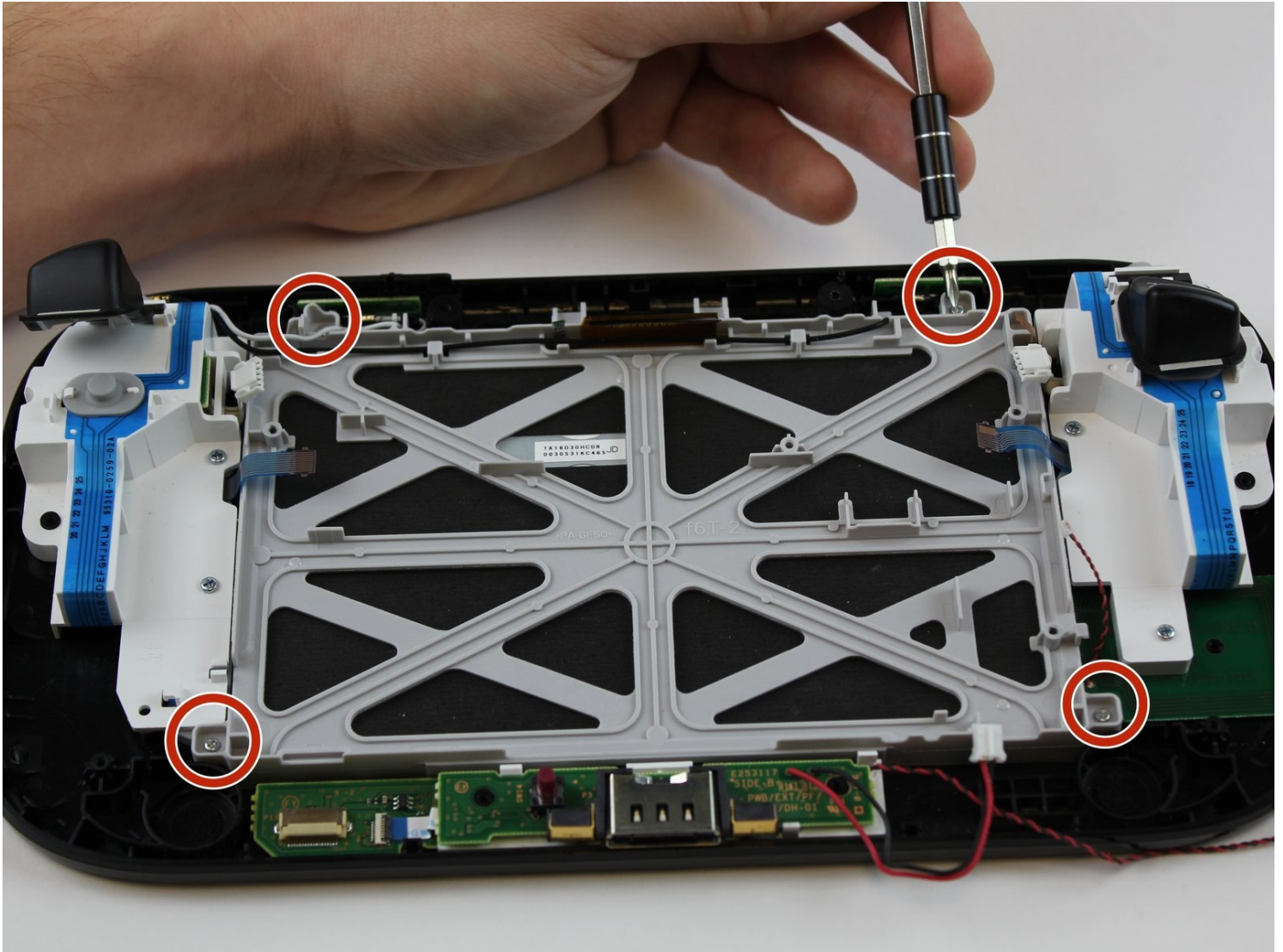




# Wii U GamePad LCD Display Replacement

This guide will help you to replace the LCD...

Written By: Valentina Cerruty



# INTRODUCTION

This guide will help you to replace the LCD display . For this replacement, you will need to use a #00 Phillips screwdriver and a small Triwing (Y) screwdriver.

## TOOLS:

Phillips #0 Screwdriver (1)  
Y1 Tri-point Screwdriver (1)  
Tweezers (1)

## PARTS:

Wii U GamePad Screen (1)  
Wii U GamePad LCD (1)

## Step 1 — Battery



- Place Gamepad face down and remove the two 4.7 mm screws with a Phillips size #00 screwdriver.

## Step 2



- Lift and remove the battery plate.

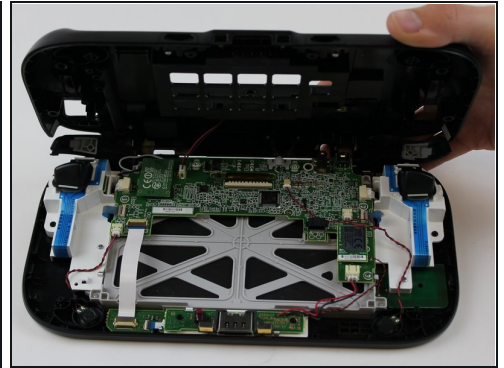
## Step 3



- With your finger, press down and pull back on the battery connector plug.
- Remove the battery from the battery case.

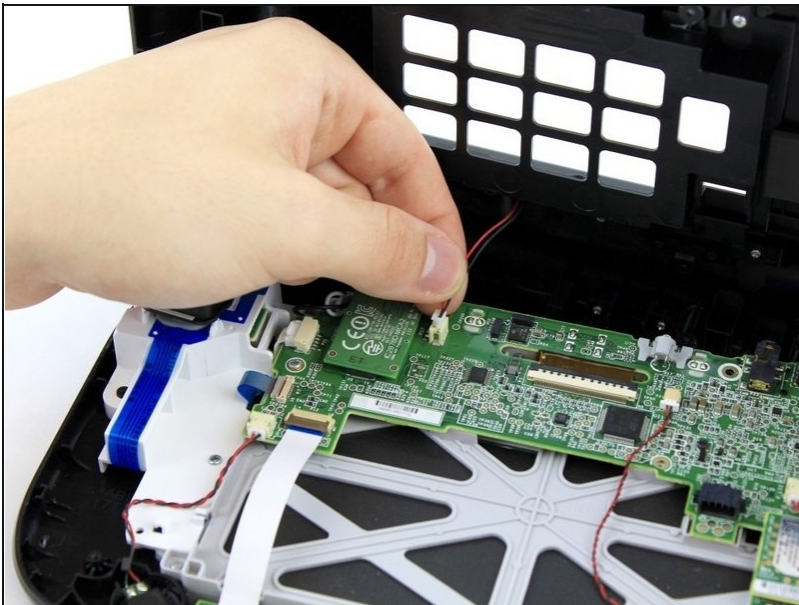


## Step 4 — Outer Case



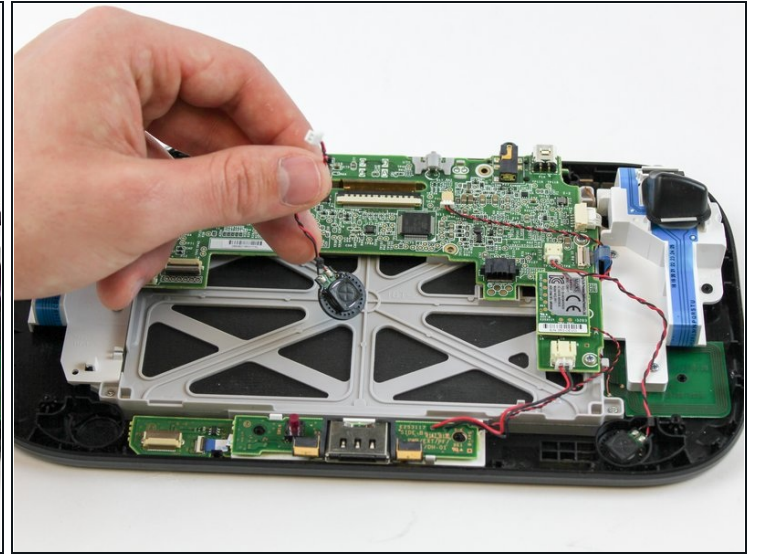
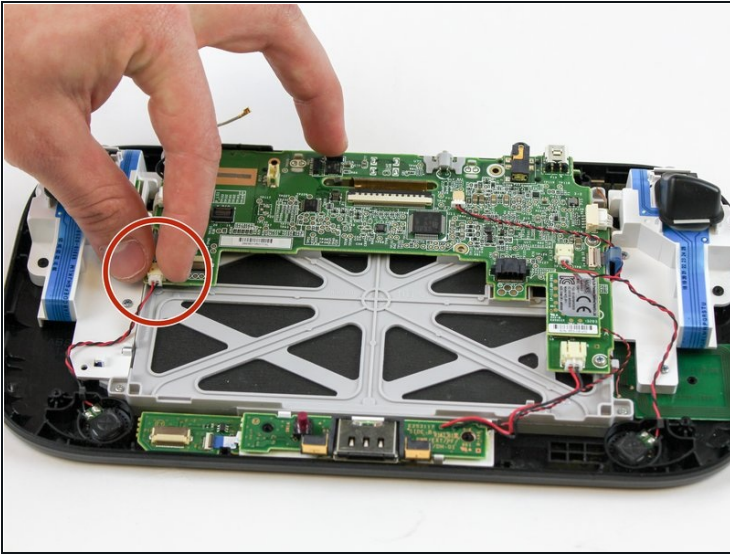
- Remove 10 9mm screws with Tri-Wing size Y1 screwdriver around the outer case.
  - Lift up on the back of case.
- ⚠ Lift gently because the rumble motor in the back of the case is still connected by a cable to the motherboard.

## Step 5



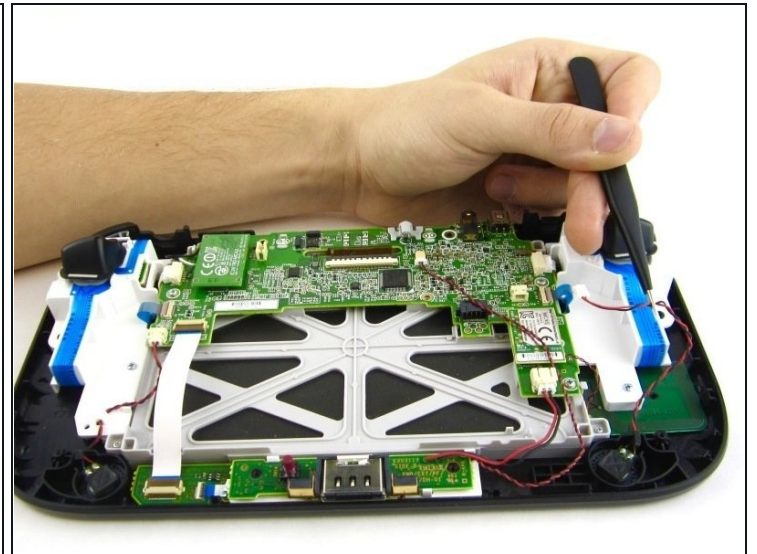
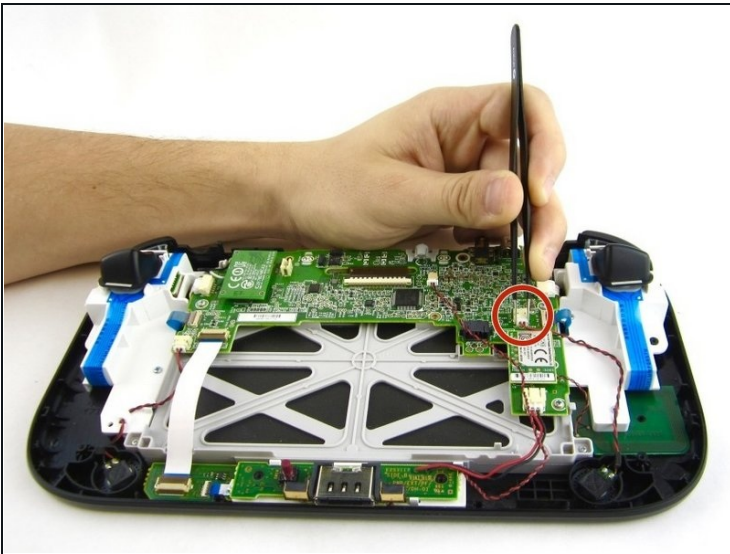
- Unplug outer case rumble motor connector from the motherboard with your fingers.

## Step 6 — Speakers



- With your fingers, unplug the left speaker cable from the motherboard.

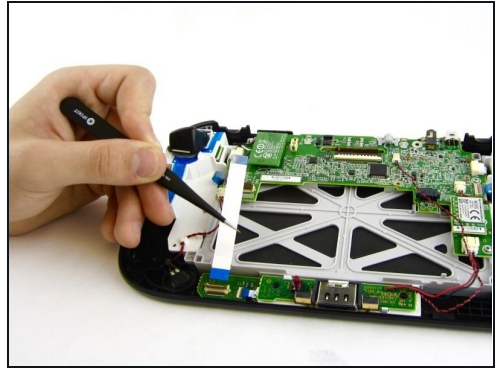
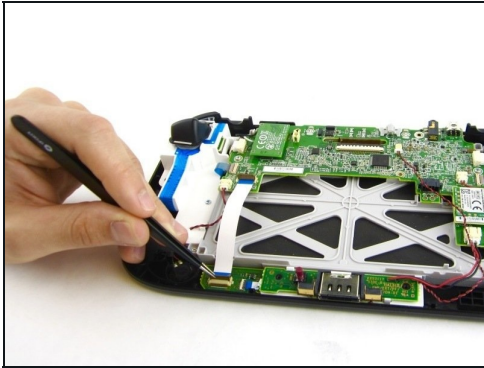
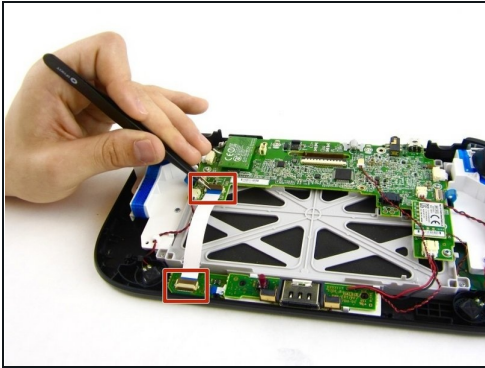
## Step 7



- Remove the right speaker cable that's connected to the motherboard with the tweezers.

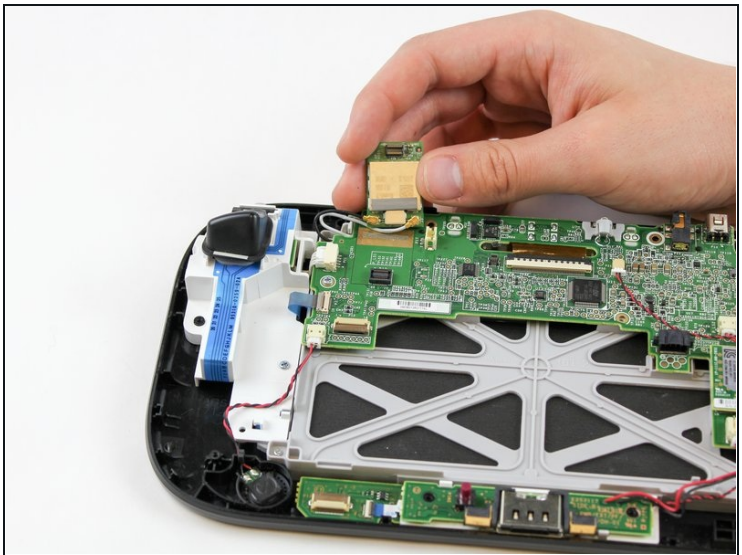
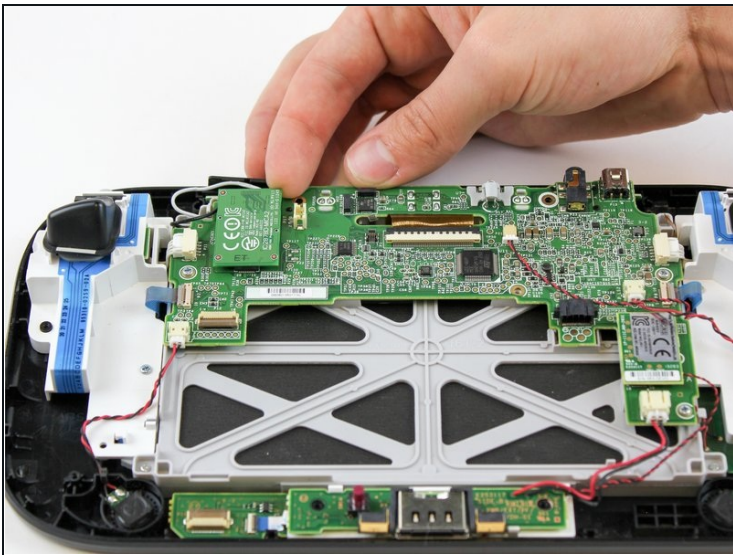


## Step 8 — WiFi



- Open the top and bottom clasp that connects the white flex cable to the motherboard with the tweezers.
- Remove the white flex cable with the tweezers.

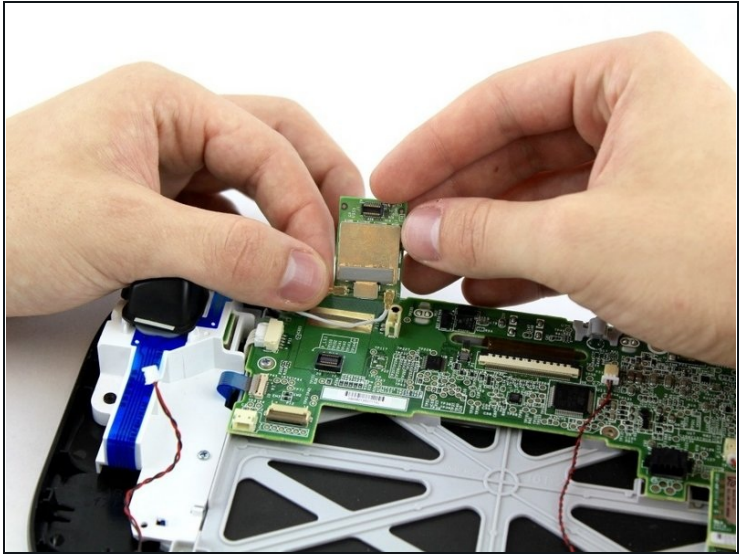
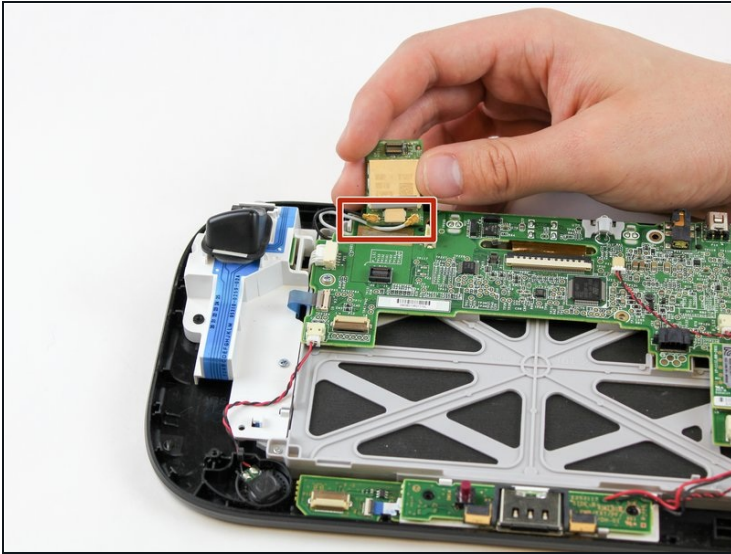
## Step 9



- With your fingers, lift and remove WiFi board.

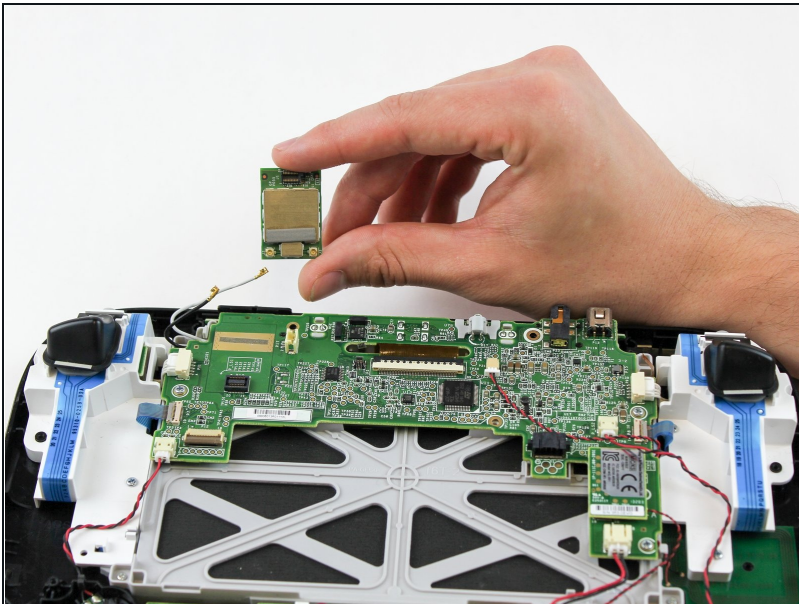
⚠ Remove the board carefully as there are still two wires attached.

## Step 10



- Disconnect the black and white wires off of the back of the WiFi module.

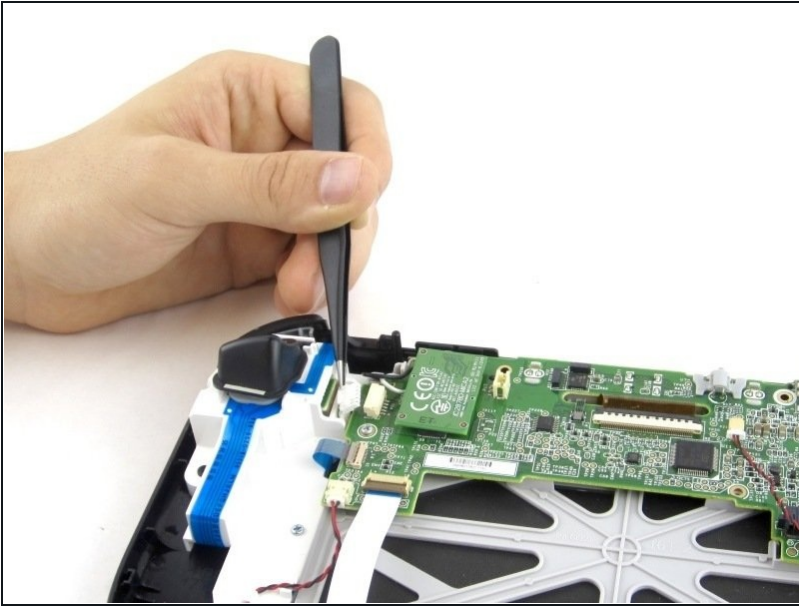
## Step 11



- Lift and remove the WiFi module.

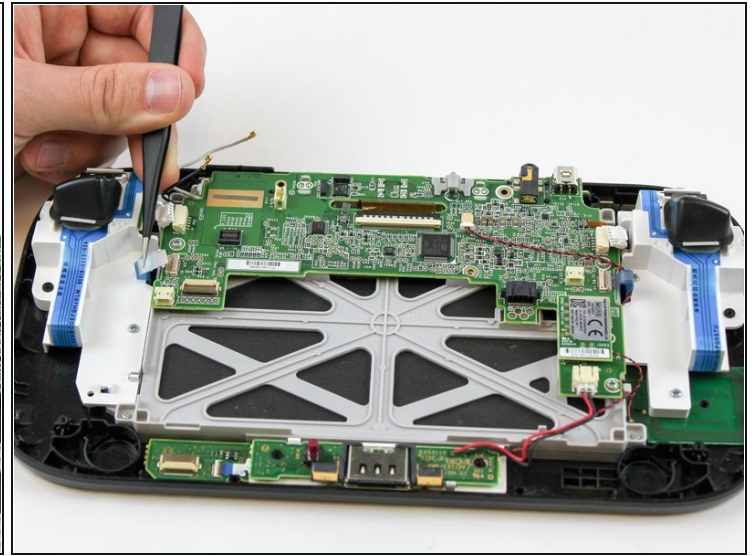
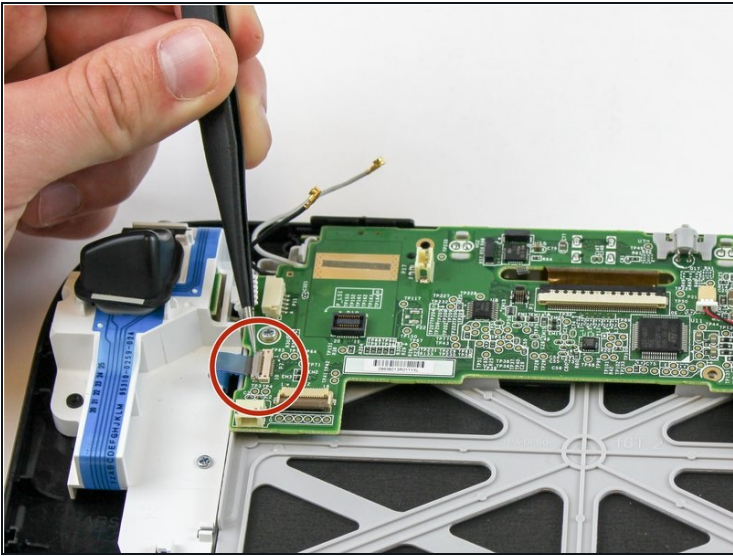


## Step 12 — Motherboard



- Disconnect the analog connector with tweezers.

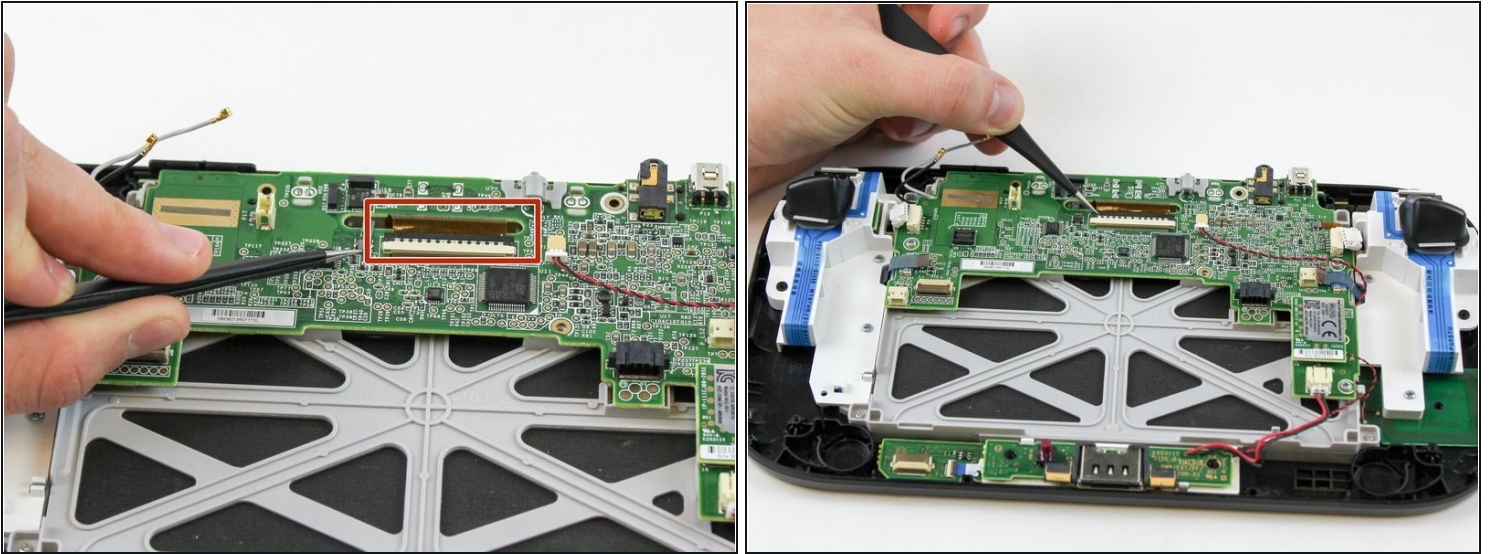
## Step 13



- Remove the blue connector using tweezers.



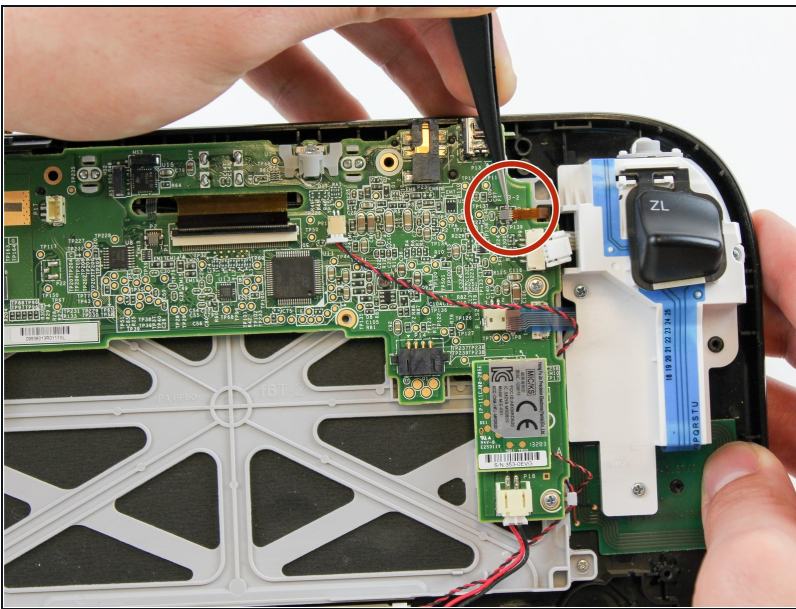
## Step 14



- Carefully lift the black clasp. It is prone to breaking if only lifted from one point. Remove the brown ribbon by using the tweezers.

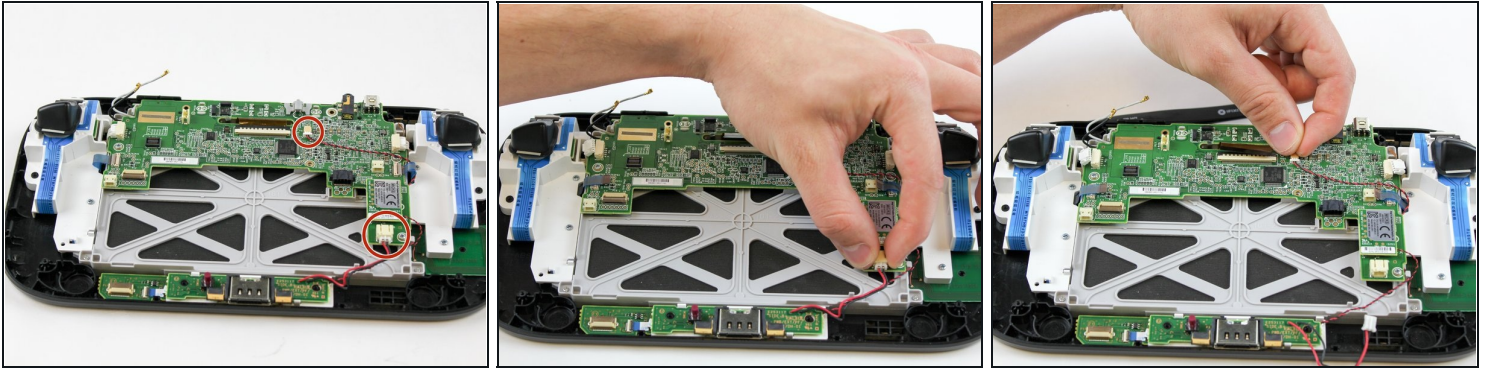
⚠ Unclasp and release the small digitizer ribbon cable to the left of the brown ribbon. Be careful, the clasp breaks easily.

## Step 15



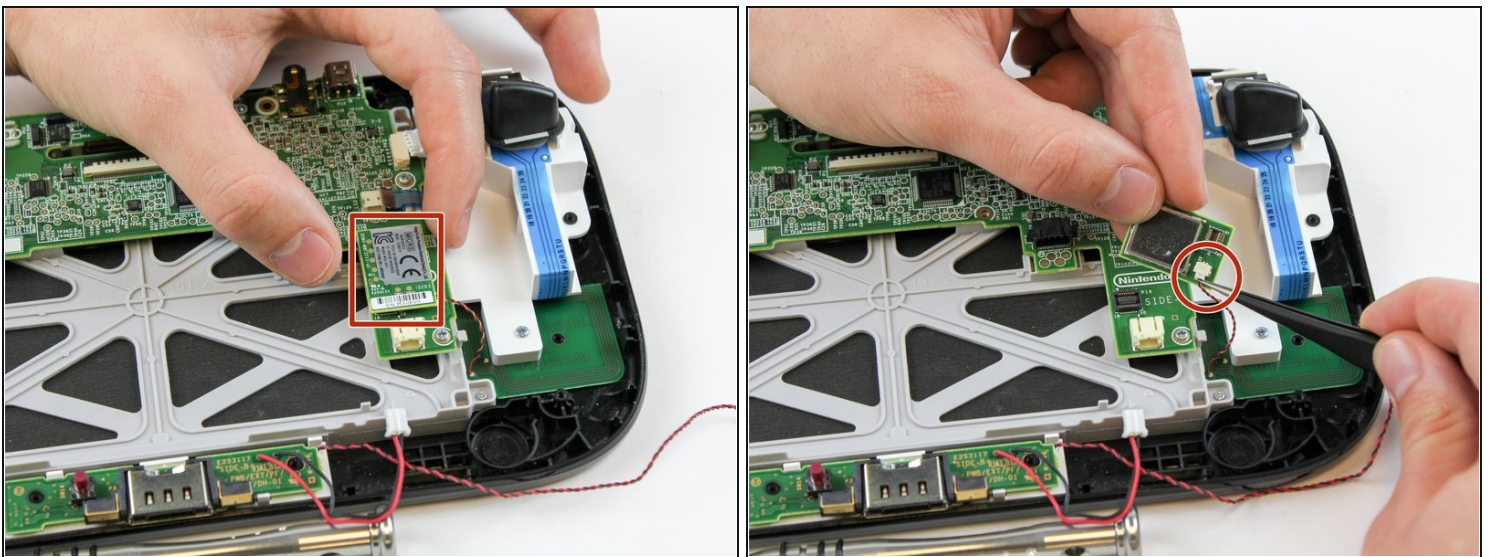
- Remove the small orange ribbon with the tweezers.

## Step 16



- Remove these two connectors to the motherboard with your fingers.

## Step 17



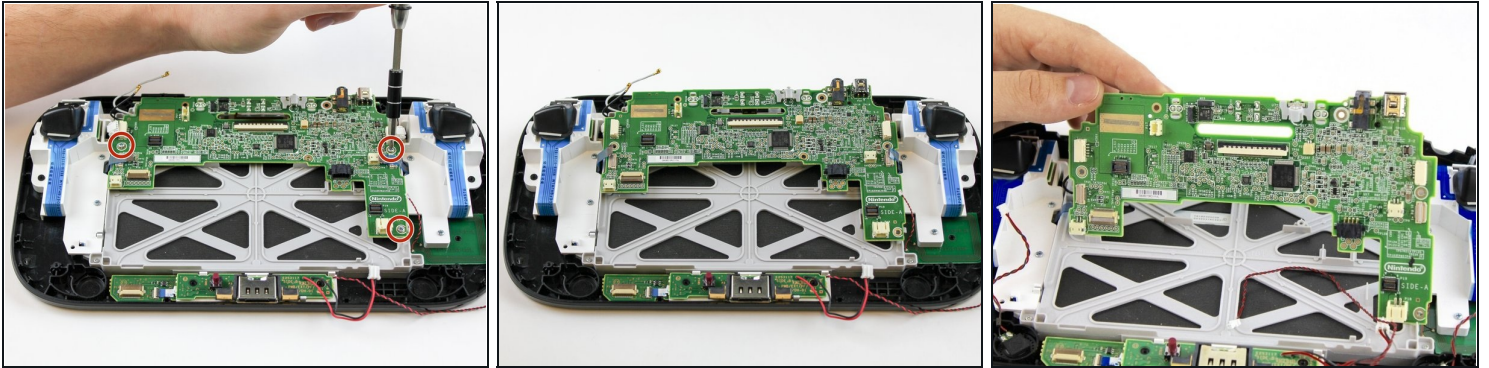
- Remove the NFC communicator.

⚠ When removing the NFC communicator, be careful with the small connector on the back side.

- Remove the small connector plug-in on the back.

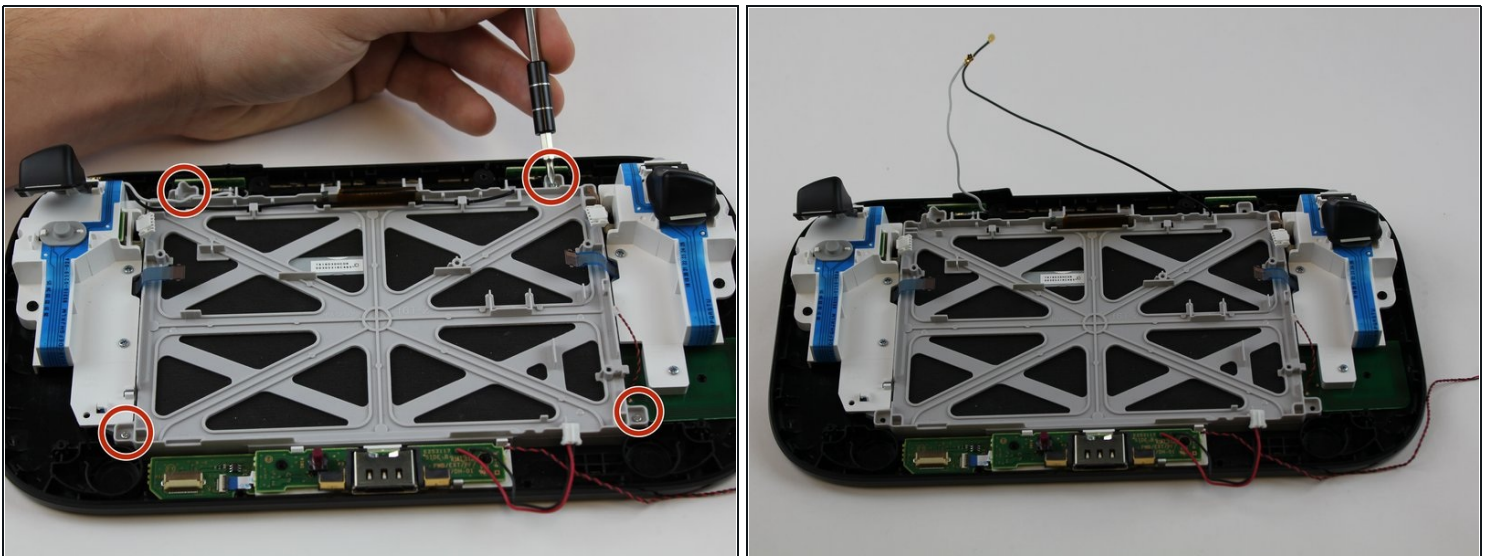


## Step 18



- Remove the remaining three 5.1 mm screws using the Phillips size #0 screwdriver.
- Lift and remove the mother board.

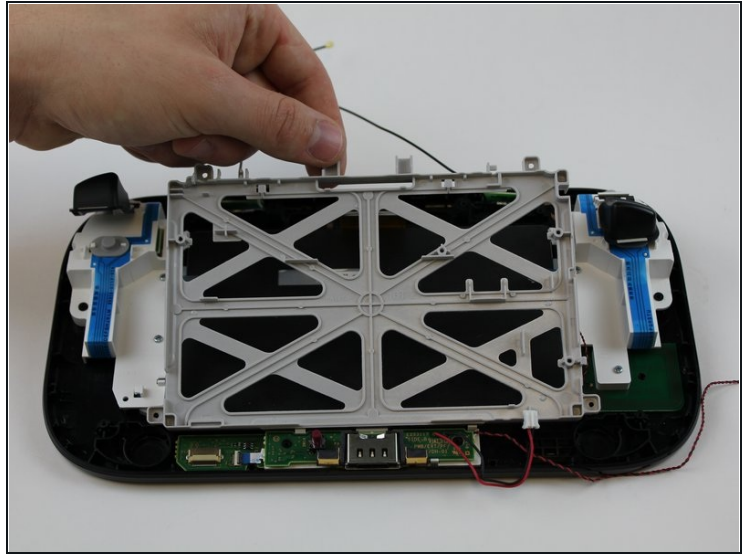
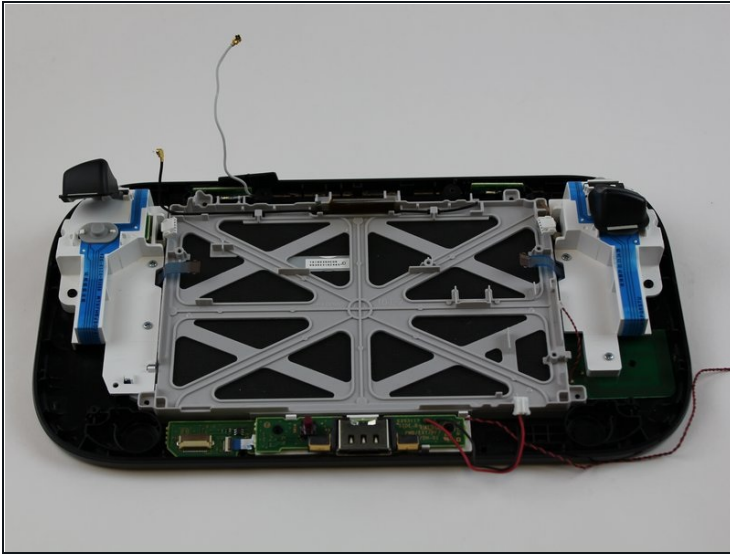
## Step 19 — LCD Display



- Remove the four 5.1mm screws using Phillips size #0 screwdriver.
- Pull the white and black cables away from the display case.

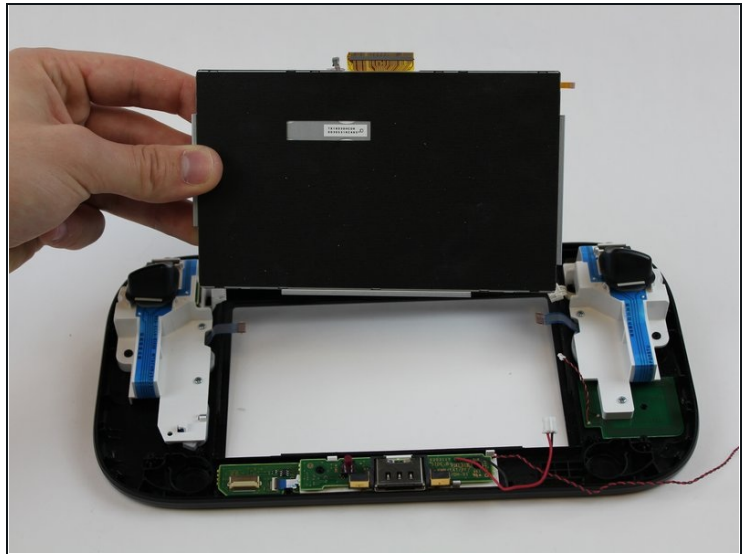
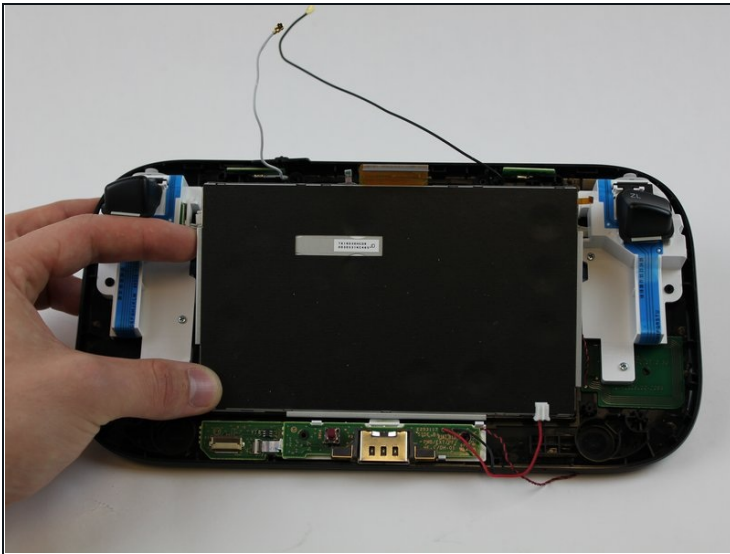


## Step 20



- Lift and remove the grey display case with your fingers.

## Step 21



- Gently with your fingers, press on the front of the display and it will lift up.
- Remove the display with your fingers.

---

To reassemble your device, follow these instructions in reverse order.