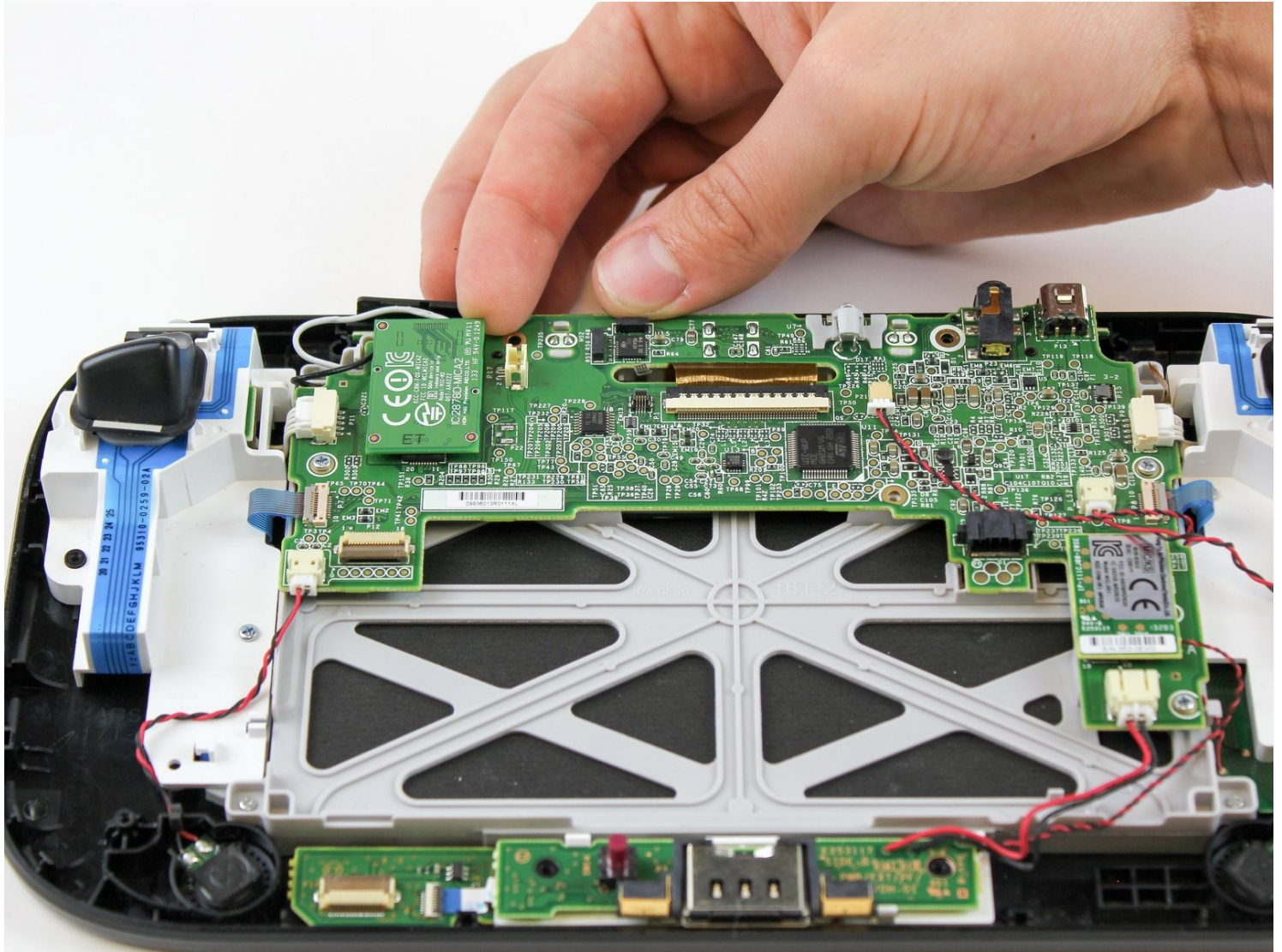




# Wii U GamePad WiFi Replacement

This guide will help you to remove the WiFi...

Written By: Valentina Cerruty



# INTRODUCTION

This guide will help you to remove the WiFi board from the Nintendo Wii U Gamepad.

## TOOLS:

Tweezers (1)  
Phillips #0 Screwdriver (1)  
Y1 Tri-point Screwdriver (1)

## PARTS:

Nintendo Wii U GamePad Wi-Fi Board (1)

## Step 1 — Battery



- Place Gamepad face down and remove the two 4.7 mm screws with a Phillips size #00 screwdriver.

## Step 2



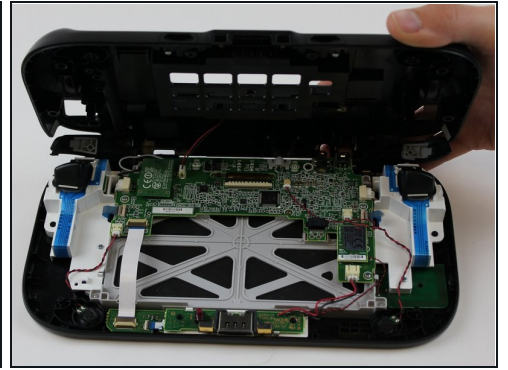
- Lift and remove the battery plate.

## Step 3



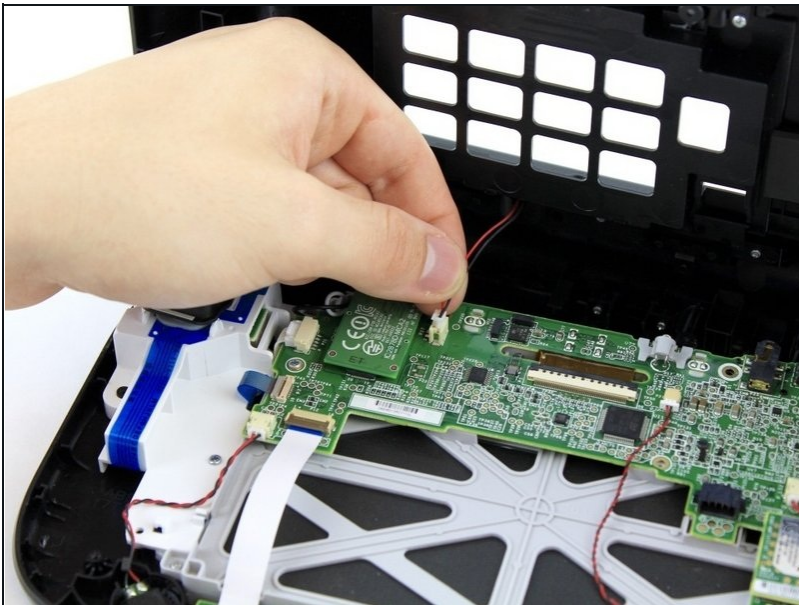
- With your finger, press down and pull back on the battery connector plug.
- Remove the battery from the battery case.

## Step 4 — Outer Case



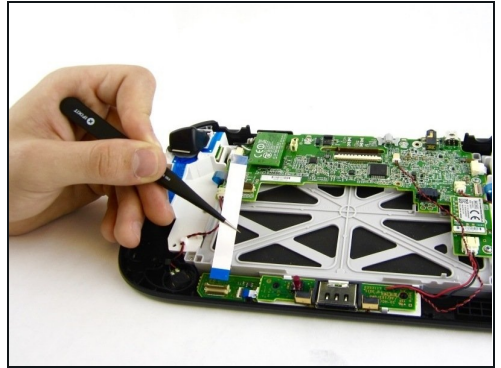
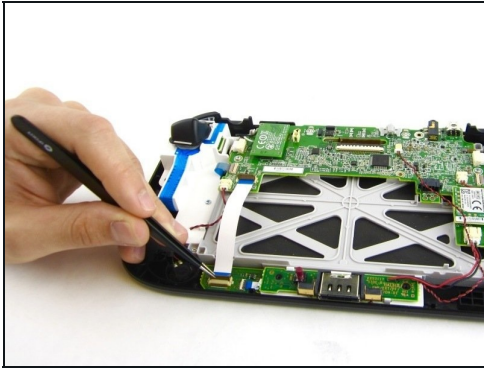
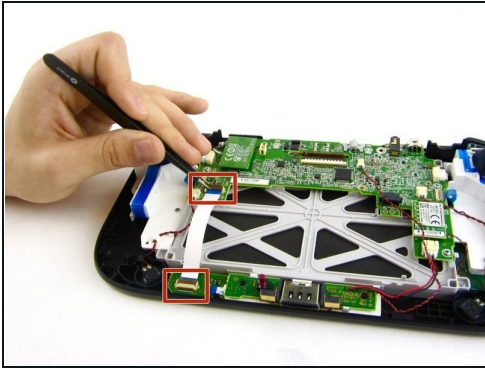
- Remove 10 9mm screws with Tri-Wing size Y1 screwdriver around the outer case.
  - Lift up on the back of case.
- ⚠ Lift gently because the rumble motor in the back of the case is still connected by a cable to the motherboard.

## Step 5



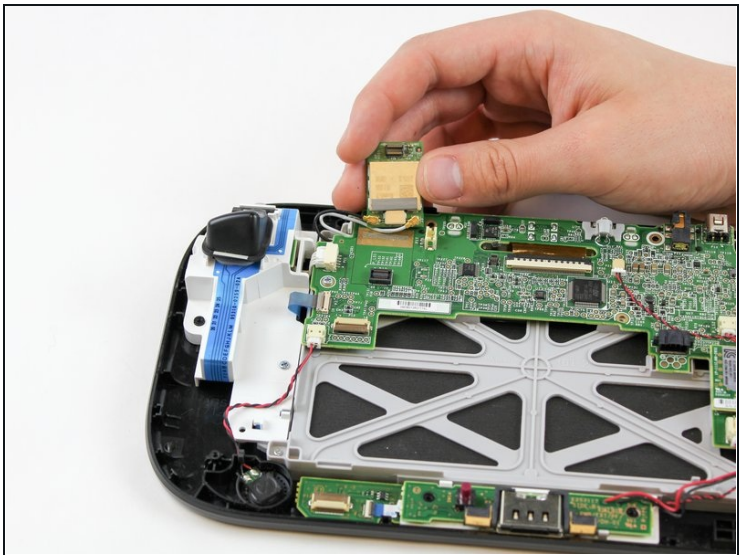
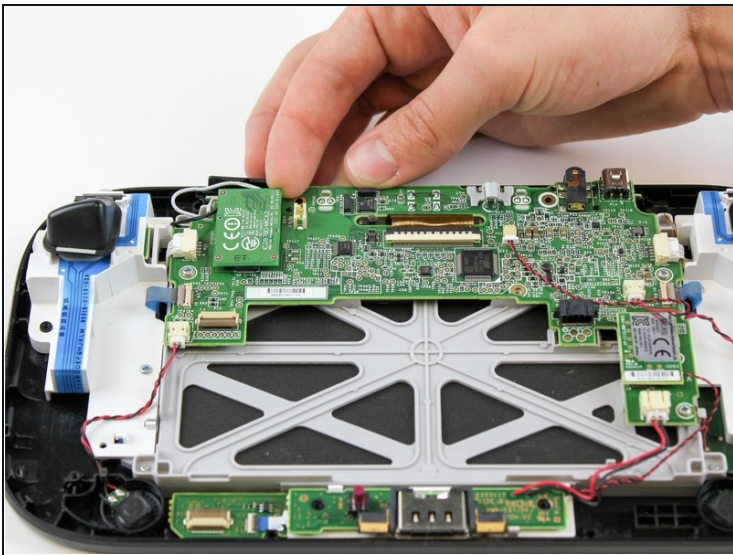
- Unplug outer case rumble motor connector from the motherboard with your fingers.

## Step 6 — WiFi



- Open the top and bottom clasp that connects the white flex cable to the motherboard with the tweezers.
- Remove the white flex cable with the [tweezers](#).

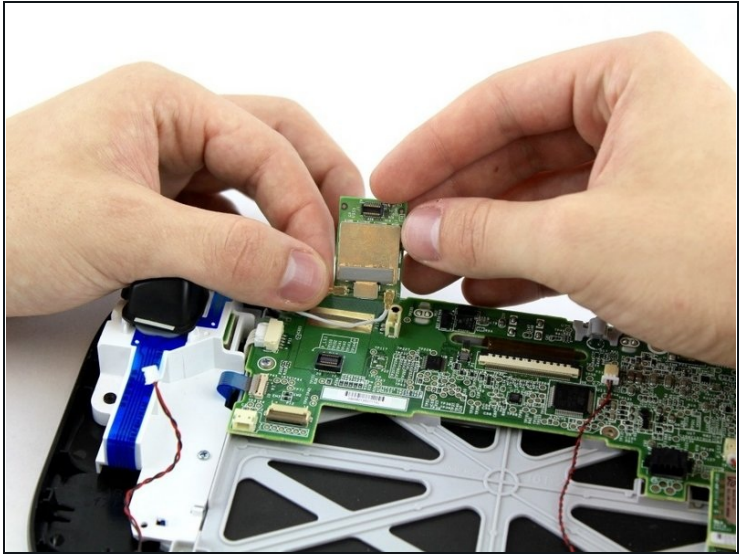
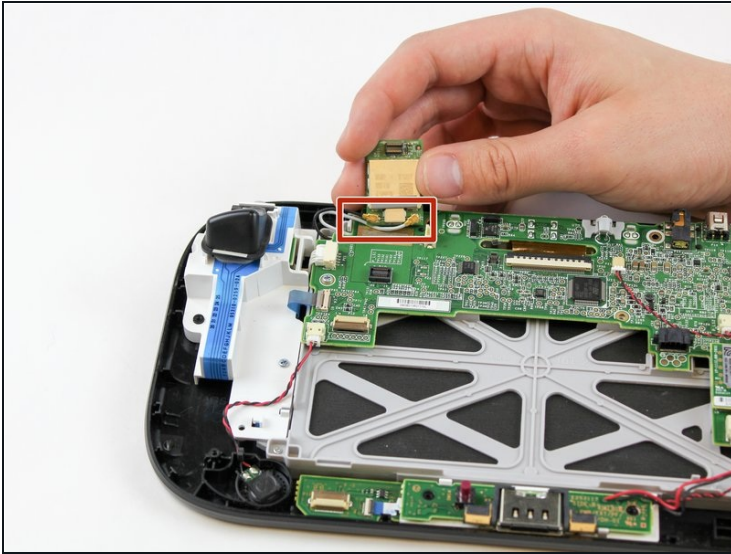
## Step 7



- With your fingers, lift and remove WiFi board.

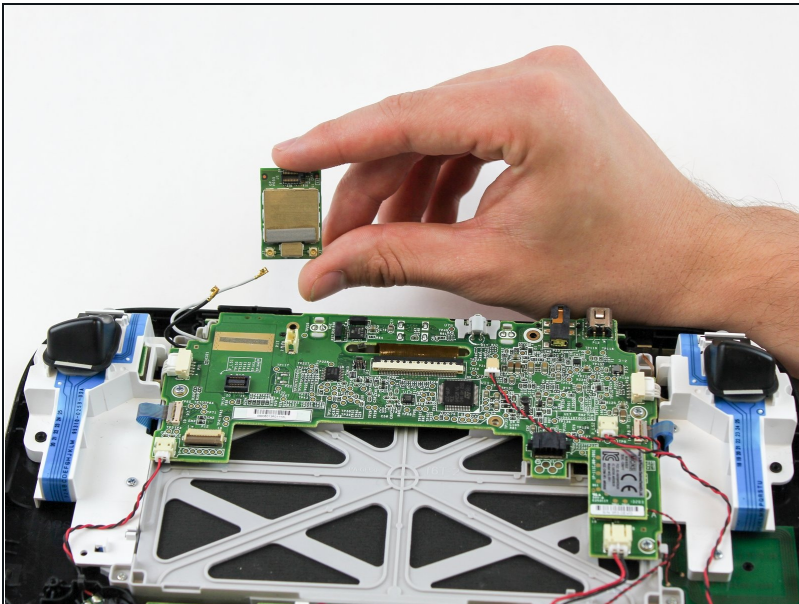
⚠ Remove the board carefully as there are still two wires attached.

## Step 8



- Disconnect the black and white wires off of the back of the WiFi module.

## Step 9



- Lift and remove the WiFi module.

To reassemble your device, follow these instructions in reverse order.