



iPhone 6s Logic Board Replacement

Follow the steps in this guide to replace the...

Written By: Evan Noronha



INTRODUCTION

Follow the steps in this guide to replace the logic board in an iPhone 6s.

It's important to note that each iPhone's logic board and Touch ID fingerprint sensor are paired at the factory, so replacing the logic board will disable Touch ID *unless* you also install a replacement home button that has been properly paired to your new logic board.

You can also use this guide for reference to replace the **logic board EMI shield stickers**.



TOOLS:

[Anti-Clamp](#) (1)
[P2 Pentalobe Screwdriver iPhone](#) (1)
[Phillips #000 Screwdriver](#) (1)
[SIM Card Eject Tool](#) (1)
[Suction Handle](#) (1)
[Spudger](#) (1)
[Tweezers](#) (1)
[iFixit Opening Picks \(Set of 6\)](#) (1)
[iFixit Precision 4 mm Screwdriver Bit / Nut Driver 2.5 mm](#) (1)
[iOpener](#) (1)



PARTS:

[iPhone 6s Logic Board EMI Shield Stickers](#) (1)
[iPhone 6s Logic Board](#) (1)
[iPhone 6s Screw Set](#) (1)

Step 1 — Pentalobe Screws



⚠ Before disassembling your iPhone, discharge the battery below 25%. A charged lithium-ion battery can catch fire and/or explode if accidentally punctured.

- ⓘ Power off your iPhone before beginning disassembly.
- Remove the two 3.4 mm P2 Pentalobe screws on the bottom edge of the iPhone, on either side of the Lightning connector.

Step 2 — Anti-Clamp instructions



- ① The next two steps demonstrate the [Anti-Clamp](#), a tool we designed to make the opening procedure easier. **If you aren't using the Anti-Clamp, skip down three steps for an alternate method.**
- ① For complete instructions on how to use the Anti-Clamp, [check out this guide](#).
- Pull the blue handle backwards to unlock the Anti-Clamp's arms.
- Slide the arms over either the left or right edge of your iPhone.
- Position the suction cups near the bottom edge of the iPhone just above the home button—one on the front, and one on the back.
- Squeeze the cups together to apply suction to the desired area.
- ① If you find that the surface of your iPhone is too slippery for the Anti-Clamp to hold onto, you can [use tape](#) to create a grippier surface.

Step 3



- Pull the blue handle forwards to lock the arms.
- Turn the handle clockwise 360 degrees or until the cups start to stretch.
 - ① Make sure the suction cups remain aligned with each other. If they begin to slip out of alignment, loosen the suction cups slightly and realign the arms.
- Insert an opening pick under the screen when the Anti-Clamp creates a large enough gap.
 - ① If the Anti-Clamp doesn't create a sufficient gap, rotate the handle a quarter turn.
- ⚠ **Don't crank more than a quarter turn at a time, and wait a few seconds between turns. Let the Anti-Clamp and time do the work for you.**
- **Skip the next three steps.**

Step 4 — Opening Procedure



- If you don't have an [Anti-Clamp](#), follow the next three steps to use a suction handle.
- Apply mild heat to the lower edge of the iPhone using an [iOpener](#) or hair dryer for about a minute.
- ① Heat softens the adhesive securing the display, making it easier to open.

Step 5



- ① Opening the display on the 6s separates a thin strip of adhesive around the perimeter of the display. If you prefer to replace the adhesive, have a set of new adhesive strips ready before you continue. It's possible to complete the repair without replacing the adhesive, and you probably won't notice any difference in functionality.
- Apply a suction cup to the lower left corner of the display assembly.
 - Take care **not** to place the suction cup over the home button.
- ① If your display is badly cracked, [covering it with a layer of clear packing tape](#) may allow the suction cup to adhere. Alternatively, very strong tape may be used instead of the suction cup. If all else fails, you can superglue the suction cup to the broken screen.

Step 6



- Pull up on the suction cup with firm, constant pressure to create a slight gap between the front panel and rear case.
 - ① Take your time and apply firm, constant force. The display assembly is a much tighter fit than most devices and is held down with adhesive.
- ⚠ Pulling too hard may damage the display assembly. Apply just enough pressure to create a small gap between the display assembly and the rear case.**
- ① If you have any trouble, heat the front of the iPhone using an iOpener, hair dryer, or heat gun until it's slightly too hot to touch. This will help soften the adhesive securing the edges of the display.

Step 7



ⓘ There is a notch on the underside of the display, just above the headphone jack. This is the safest place to begin prying the phone open.

- Place the flat edge of a spudger into the gap between the screen and rear case, directly above the headphone jack.

Step 8



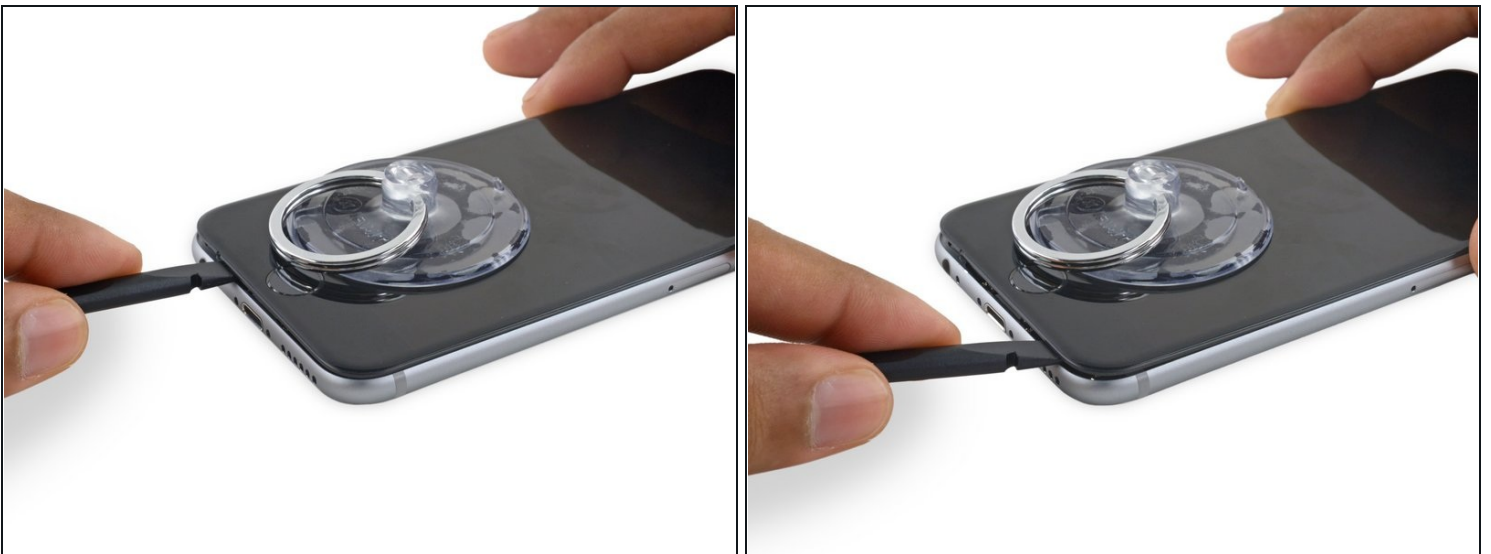
- Twist the spudger to widen the gap between the front panel assembly and the rest of the phone.

Step 9



- Insert the flat end of the spudger on the left side of the phone, between the display assembly and rear case.
- Slide the spudger up the side of the phone to separate the adhesive and pop the clips free.

Step 10



- Remove the spudger and reinsert it on the bottom edge, where you pried the phone open.
- Slide the spudger to the right, along the bottom edge of the phone.

Step 11



- Slide the spudger up the right side to continue separating the adhesive and popping the display clips free from the iPhone.

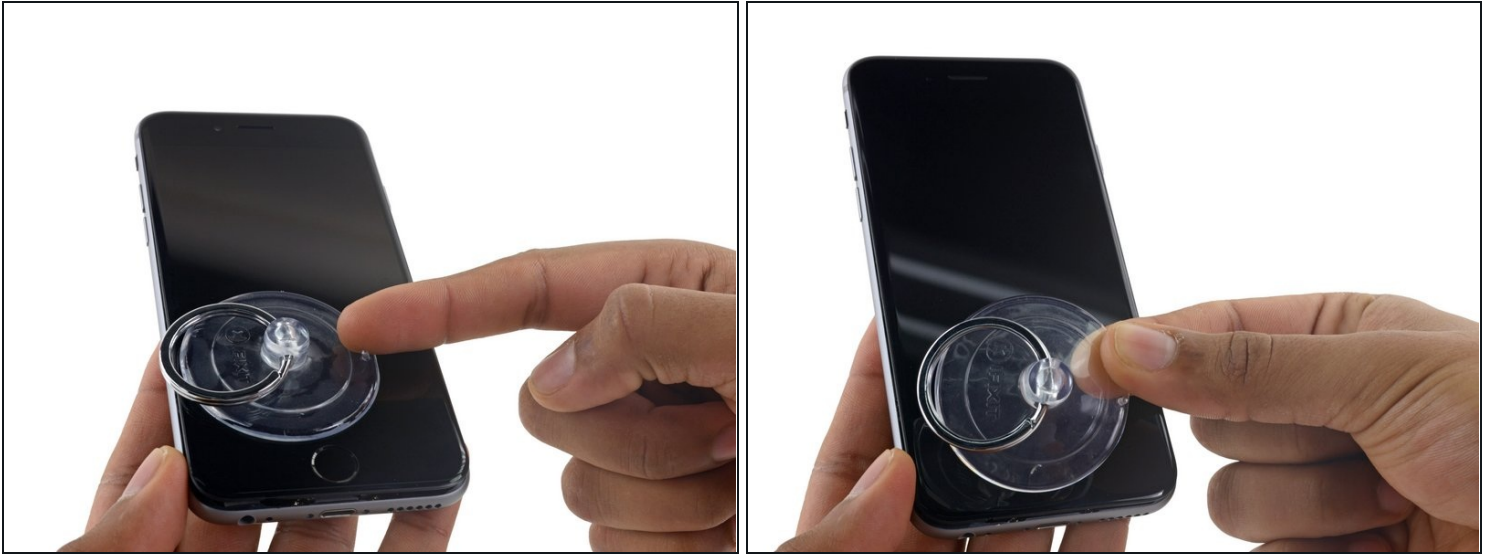
Step 12



- Use the suction cup to open the display, breaking the last of the adhesive.

⚠ Don't open the display more than 90°, as it is still connected at the top by three cables that may break if stretched.

Step 13



- Pull up on the nub on the top side of the suction cup to remove it from the front panel.

Step 14



- Gently grasp the display assembly and lift it up to open the phone, using the clips at the top of the front panel as a hinge.
- Open the display to about a 90° angle, and lean it against something to keep it propped up while you're working on the phone.
 - Add a rubber band to keep the display securely in place while you work. This prevents undue strain on the display cables.
- ① In a pinch, you can use an unopened canned beverage to hold the display.

Step 15 — Battery Connector



- Remove two Phillips screws securing the battery connector bracket, of the following lengths:
 - One 2.9 mm screw
 - One 2.2 mm screw
- ❗ Throughout this repair, [keep track of each screw](#) and make sure it goes back exactly where it came from to avoid damaging your iPhone.

Step 16



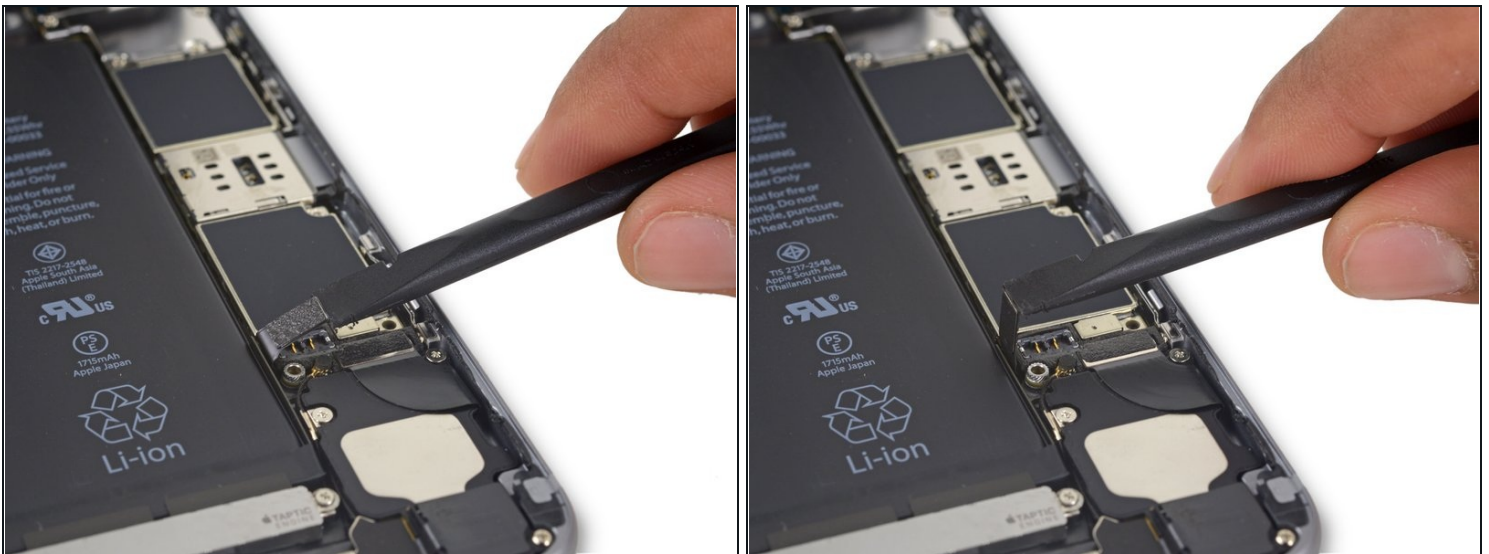
- Remove the battery connector bracket from the iPhone.

Step 17



- Use the point of a spudger to disconnect the battery connector by prying it straight up from the logic board.

Step 18



- Push the battery connector away from the logic board until it stays separated from its socket, so as to avoid any accidental connection to the battery while you work.

Step 19 — Unfasten the display cable bracket



- Remove the following four Phillips screws securing the display cable bracket:
 - Three 1.2 mm screws
 - One 2.8 mm screw

Step 20



- Remove the display cable bracket.

Step 21



- Use a spudger or a clean fingernail to disconnect the front camera flex cable by prying it straight up from its socket on the logic board.

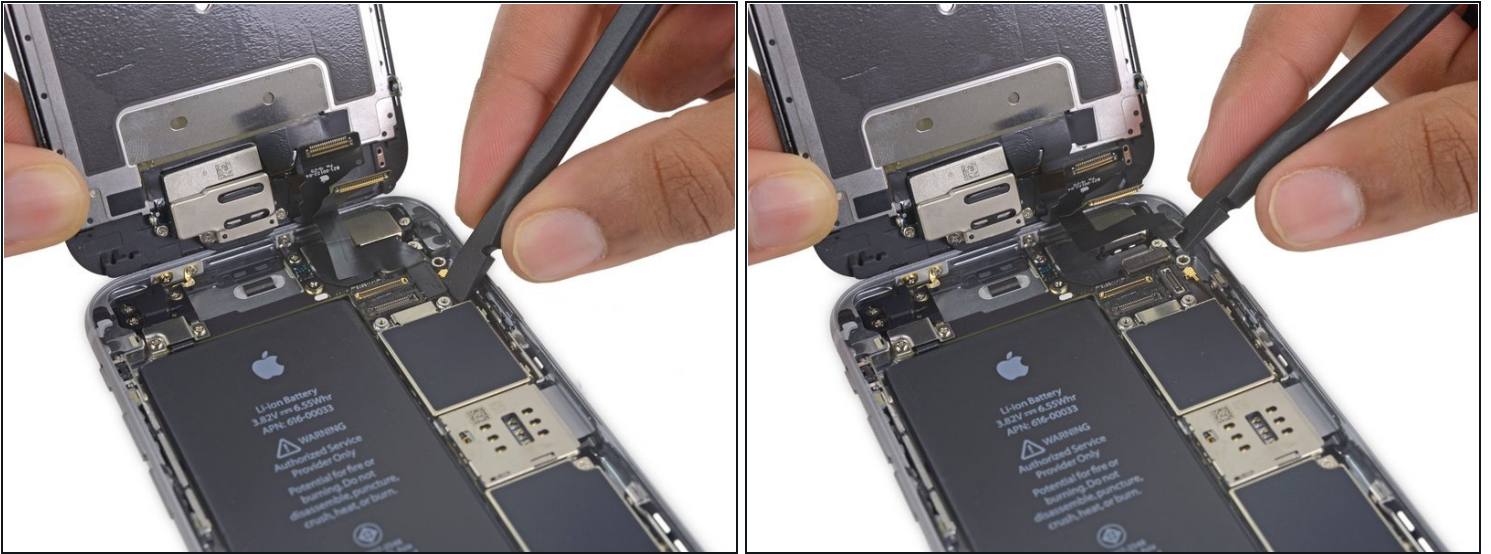
Step 22



- Disconnect the digitizer cable by prying it straight up from its socket on the logic board.

⚠ When reconnecting the digitizer cable, **do not press the center of the connector**. Press one end of the connector, then press the opposite end. Pressing in the center of the connector can bend the component and cause digitizer damage.

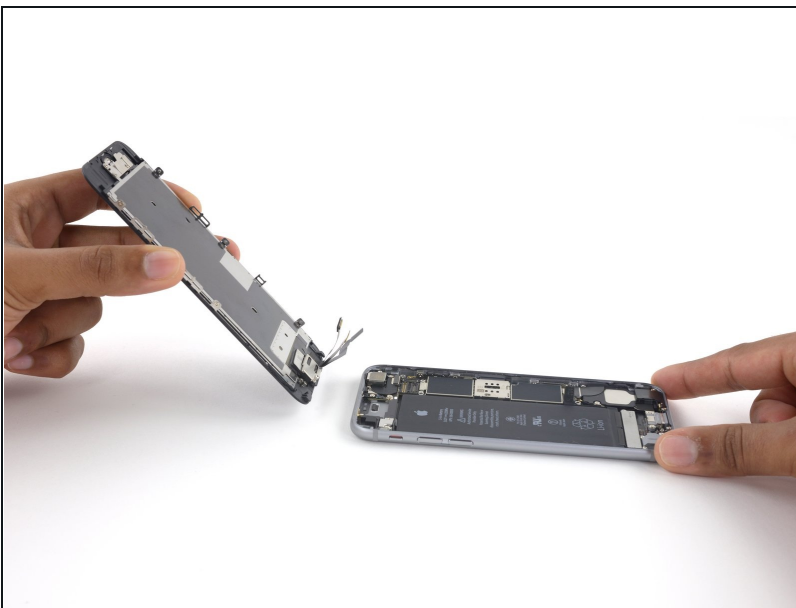
Step 23



⚠ Make sure the battery is disconnected before you disconnect or reconnect the cable in this step.

- Disconnect the display cable by prying it straight up from its socket on the logic board.

Step 24



- Remove the display assembly.
- ✦ During reassembly, pause here if you wish to [replace the adhesive around the edges of the display](#).

Step 25 — Rear Camera



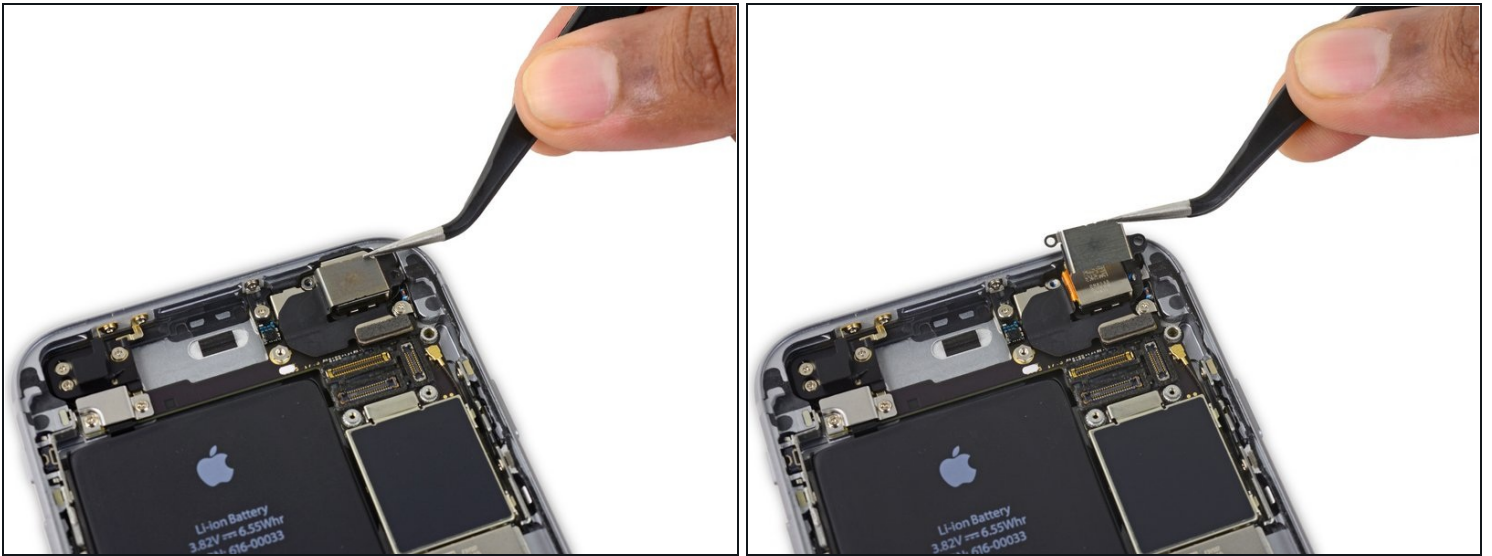
- Use the flat end of a spudger to disconnect the rear camera from its socket on the logic board.

Step 26



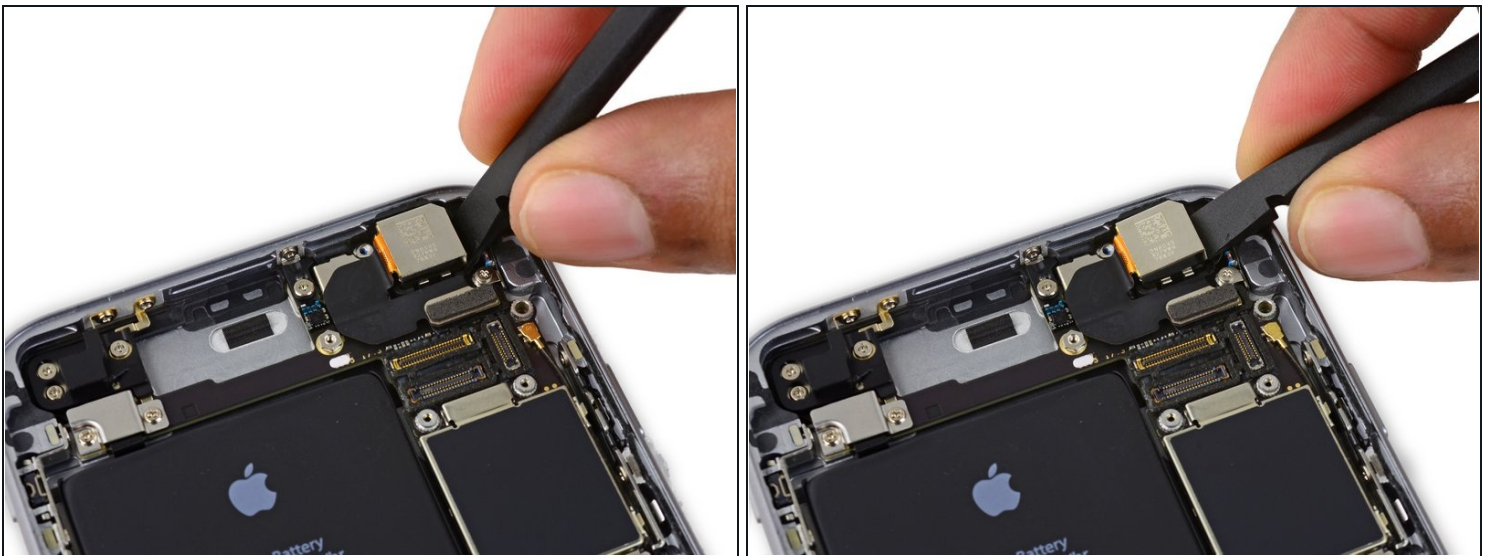
- Remove the following two Phillips screws over the rear camera bracket:
 - One 1.6 mm screw
 - One 2.0 mm screw

Step 27



- Remove the camera bracket.

Step 28



- Insert a spudger to the side of the camera, between the rear case and the camera module.
- Gently pry up on the camera to nudge it out from its housing.

Step 29



- Remove the camera.

Step 30 — SIM Tray



- Insert a SIM card eject tool or a paperclip into the small hole in the SIM card tray.
- Press to eject the tray.
 - ⓘ This may require a significant amount of force.

Step 31



- Remove the SIM Card tray assembly from the iPhone.
- ☑ When reinserting the SIM card, ensure that it is in the proper orientation relative to the tray.

Step 32 — Logic Board



- Remove the two 2.3 mm Phillips screws securing the upper component cable connector bracket.

Step 33



- Remove the upper component cable connector bracket.

Step 34



- Remove the following five Phillips screws securing the top left Wi-Fi antenna:
 - Two 1.5mm screws
 - One 2.3 mm screw
 - One 1.9 mm screw
 - One 2.0 mm screw

Step 35



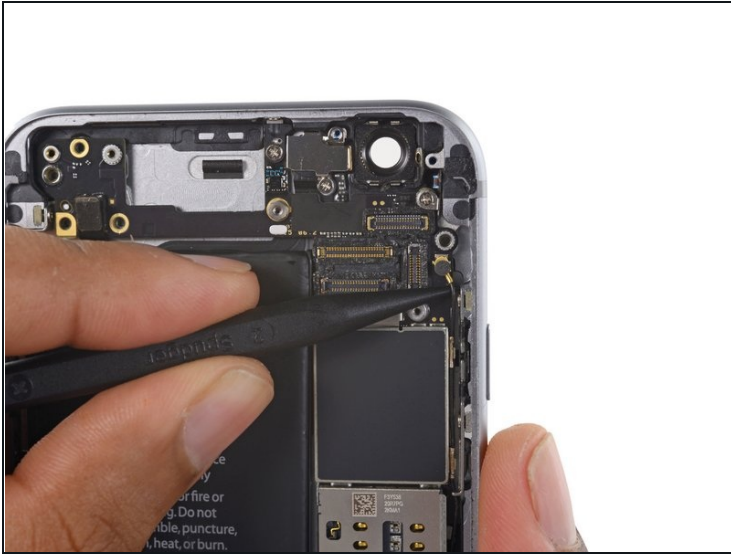
- Remove the top left Wi-Fi antenna.

Step 36



- Use the flat end of a spudger to disconnect the audio control cable from its socket on the logic board.

Step 37



- Use the pointed tip of a spudger to disconnect the antenna cable from its socket on the upper right corner of the logic board.

Step 38



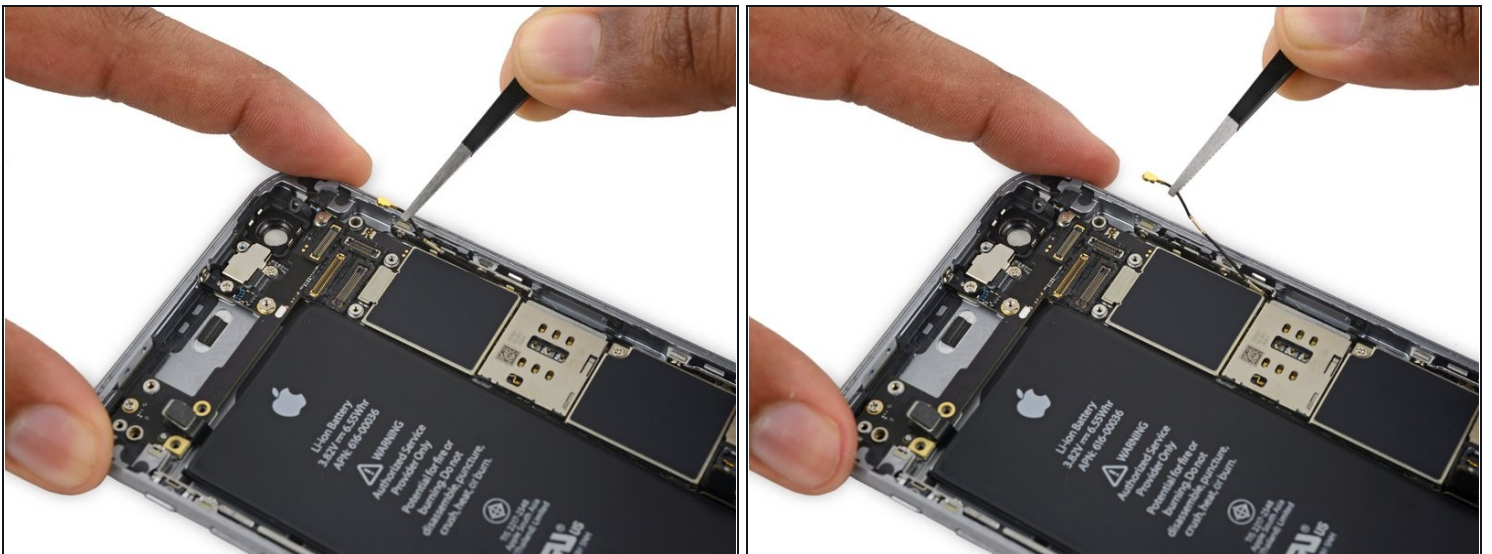
- Use the pointed tip of a spudger to disconnect the antenna cable from its socket on the lower left corner of the logic board.

Step 39



- Insert the flat end of a spudger underneath the Lightning connector ribbon cable. Lift up to disconnect it from its socket on the logic board.

Step 40



- Gently pull up on the antenna cable to de-route it from the two clips on the right side of the logic board.

Step 41



- Remove the 1.3 mm Phillips screw securing the NFC bracket to the logic board.

Step 42



- Remove the NFC bracket.

Step 43



- Remove the following two Phillips screws:
 - One 2.5 mm screw at the top of the logic board
 - One 1.4 mm screw set into the upper edge of the rear case

Step 44



- Remove the plastic clip.

Step 45



- Remove the final three screws securing the logic board to the rear case:
 - One 1.9 mm Phillips screw
 - One 2.5 mm hex nut
 - One 1.8 mm Phillips screw

Step 46



- Insert an opening pick below the lower edge of the logic board, between the board and the loudspeaker.
- Use the opening pick to gently lift the logic board out of its housing.
- Remove the logic board.

To reassemble your device, follow these instructions in reverse order.