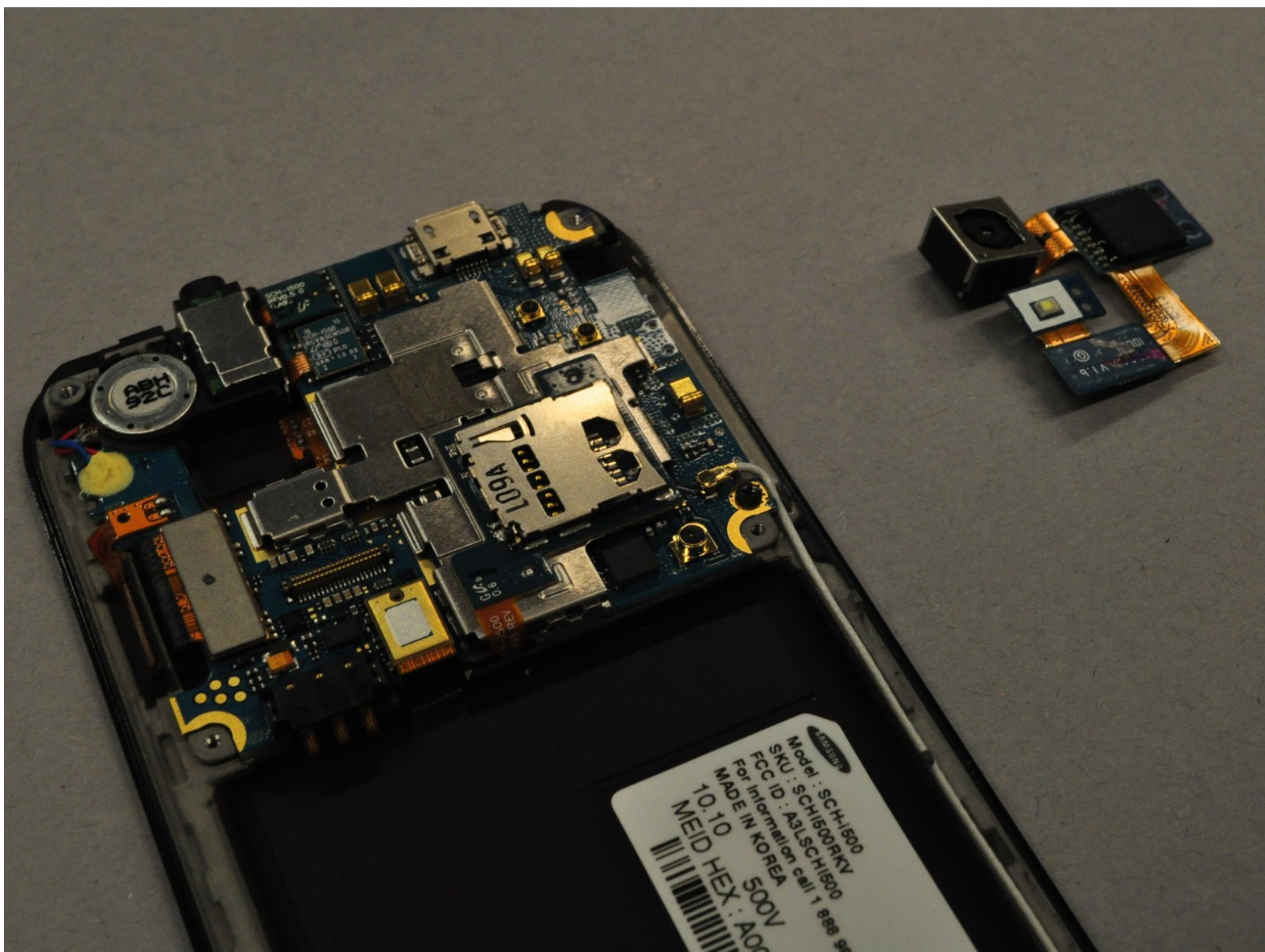




Samsung Fascinate Camera Replacement

How to remove and/or install the camera unit on a Samsung Galaxy S.

Written By: Kevin Carlson



INTRODUCTION

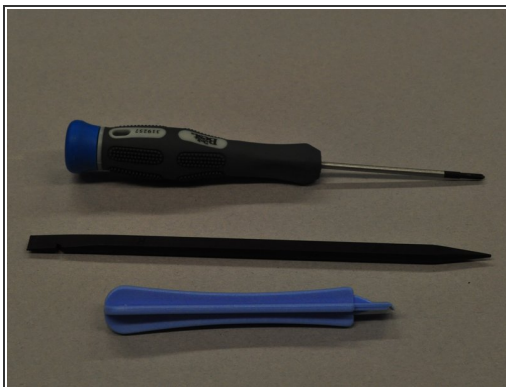
This guide will show you how to disassemble the Samsung Galaxy S in order to get access to its camera unit.



TOOLS:

- [iFixit Opening Tools](#) (1)
 - [Spudger](#) (1)
 - [Phillips #00 Screwdriver](#) (1)
-

Step 1 — Back Case



- To remove the back case of the Samsung Galaxy S, you may need a spudger.
- Identify the slit which is at the bottom edge of the phone.

Step 2



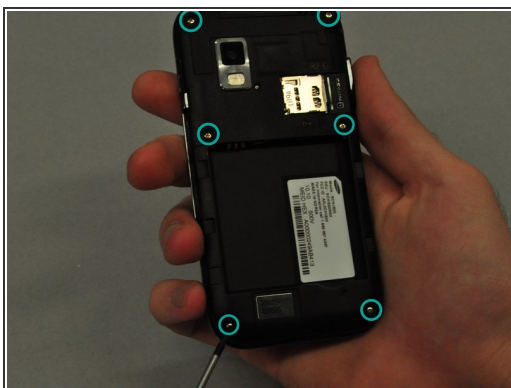
- Insert the edge of the spudger into the slit and use it to pry the back case off of the phone.

Step 3 — Battery



- Insert the spudger into the space between the battery and the phone and pry the battery out as you slide it along the underside the battery.

Step 4 — Speaker



- Use the screwdriver to unscrew each of the 6 silver screws holding the main case to the LCD touchscreen.
- If the screws are stuck, use the spudger to pry them out.

Step 5



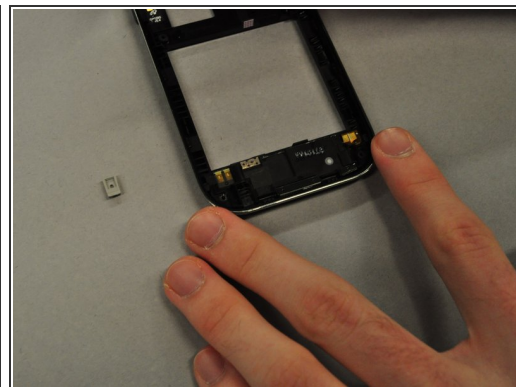
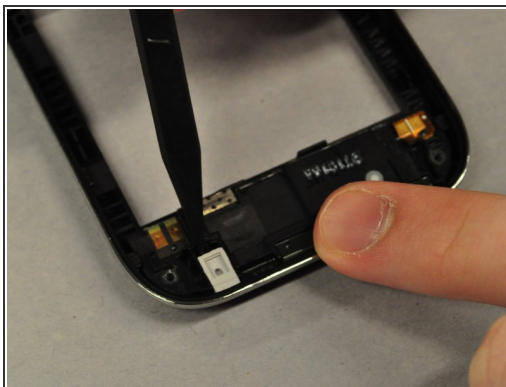
- Use the plastic opening tool to pry the main case from the LCD touchscreen.
- Insert the thin edge of the plastic opening tool into the groove between the silver edge and black edge.
- Run the tool all the way around the edge of the phone until you hear each of the clips detach.

Step 6



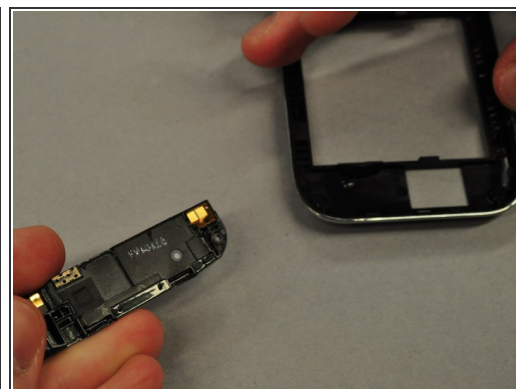
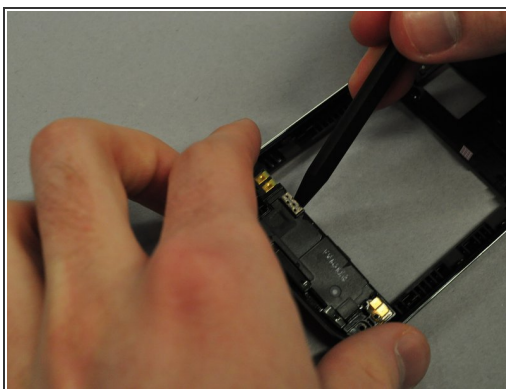
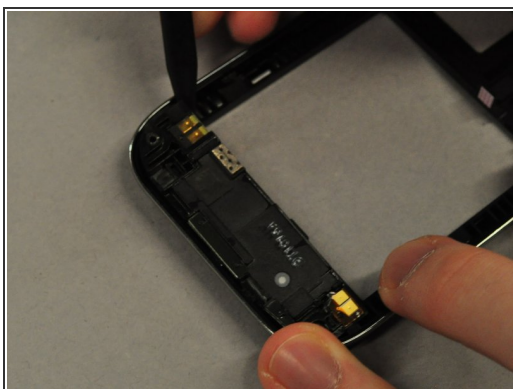
- Once the clips are detached, separate the main case from the LCD touchscreen.

Step 7



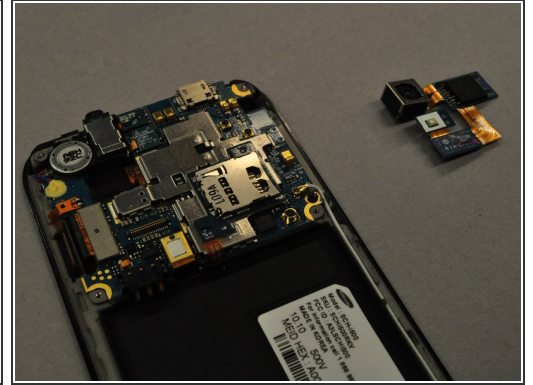
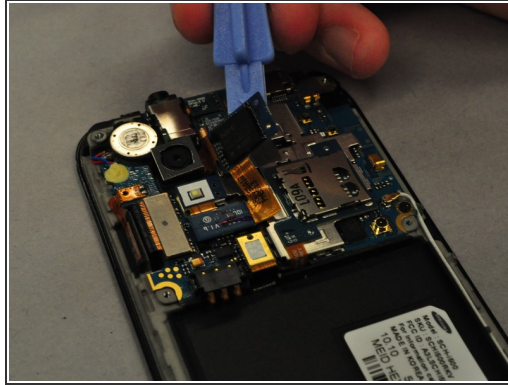
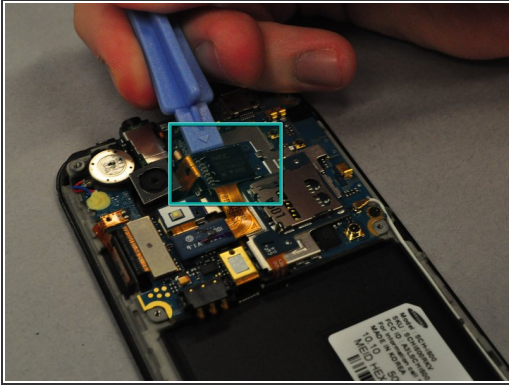
- Use the spudger to pry out the grey rubber rectangular component from the main case.

Step 8



- Use the spudger to pry along the groove between the speaker and the main case.
- Once the speaker is unclipped it should pop out easily.

Step 9 — Camera



- Using the plastic opening tool, you will need to detach the black square component which is boxed in blue.
- Pry camera unit attached to it off the motherboard.

To reassemble your device, follow these instructions in reverse order.