



Wii U GamePad Outer Case Replacement

This guide will help you to remove the outer...

Written By: Valentina Cerruty



INTRODUCTION

This guide will help you to remove the outer case and be able to open the Nintendo Wii U Gamepad. You will need a Tri-Wing Y1 screw driver.

TOOLS:

Phillips #0 Screwdriver (1)

Y1 Tri-point Screwdriver (1)

Step 1 — Battery



- Place Gamepad face down and remove the two 4.7 mm screws with a Phillips size #00 screwdriver.

Step 2



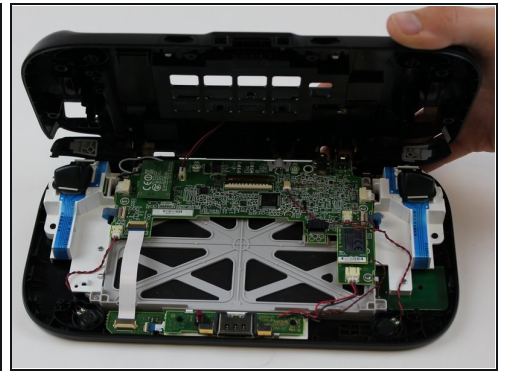
- Lift and remove the battery plate.

Step 3



- With your finger, press down and pull back on the battery connector plug.
- Remove the battery from the battery case.

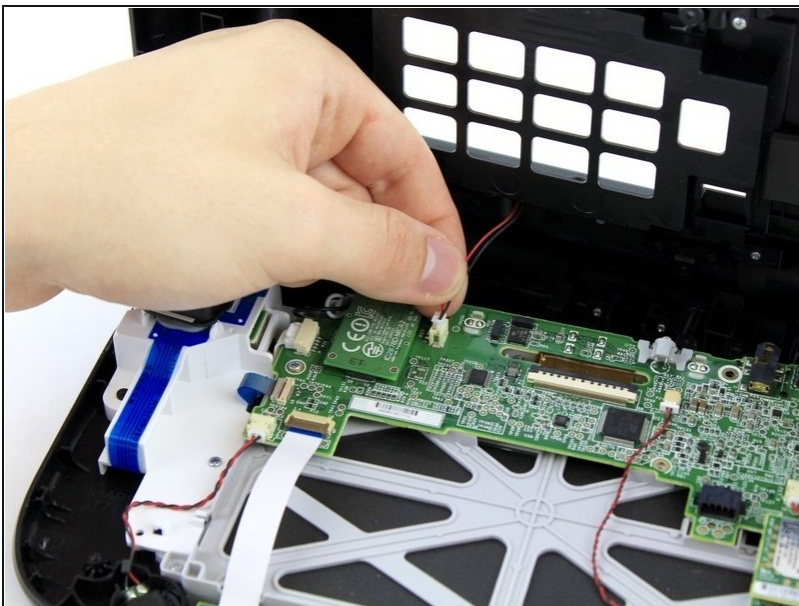
Step 4 — Outer Case



- Remove 10 9mm screws with Tri-Wing size Y1 screwdriver around the outer case.
- Lift up on the back of case.

⚠ Lift gently because the rumble motor in the back of the case is still connected by a cable to the motherboard.

Step 5



- Unplug outer case rumble motor connector from the motherboard with your fingers.

To reassemble your device, follow these instructions in reverse order.