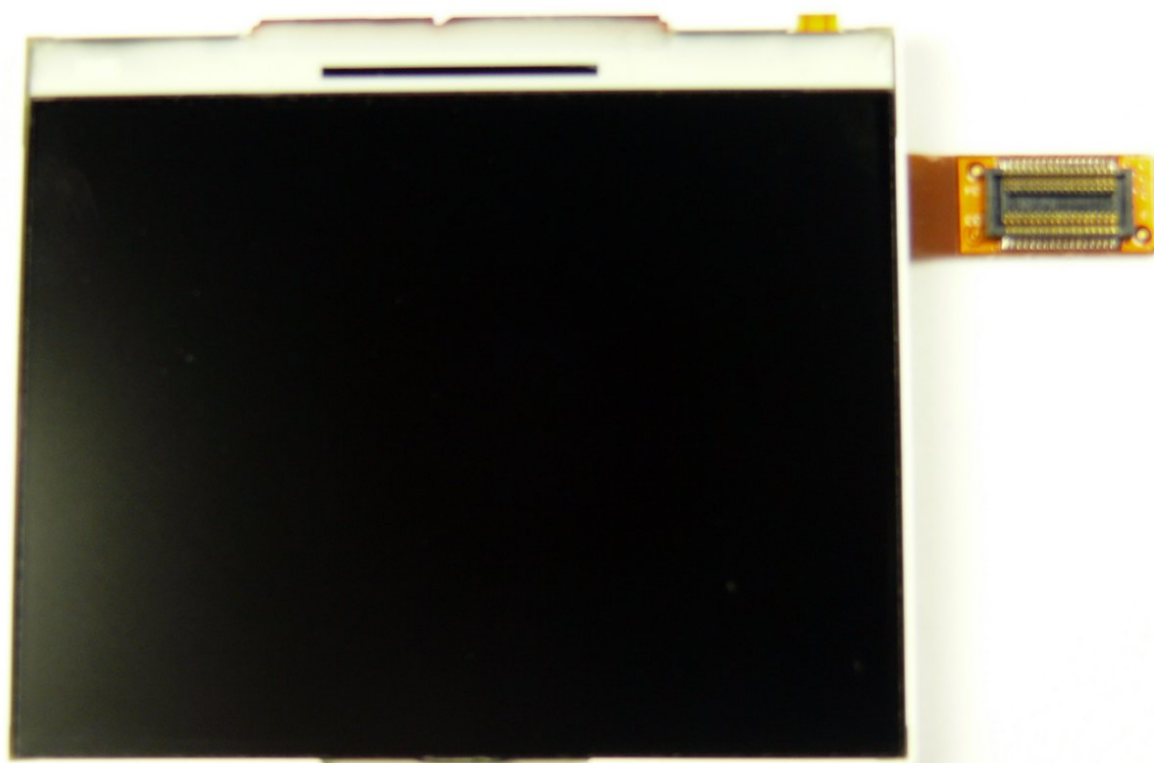




Samsung Jack LCD Replacement

Installing the Samsung Jack LCD.

Written By: Paul Piller



INTRODUCTION

Use this guide to install a new LCD screen.



TOOLS:

- [Phillips #00 Screwdriver](#) (1)
 - [iFixit Opening Tools](#) (1)
 - [Spudger](#) (1)
-

Step 1 — Battery



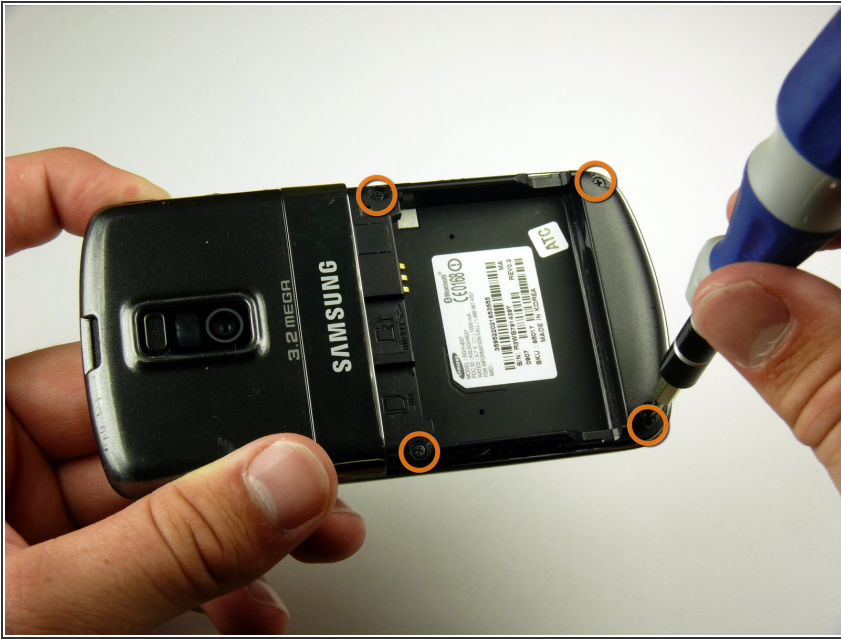
- Slide the battery cover downwards with pressure focused on the center of the cover.
- Lift the cover off of the phone.

Step 2



- Grasp the bottom left and right corners of the battery and lift it from its housing.

Step 3 — Rear Case



- Remove the four black 7.30 mm screws surrounding the battery housing using a Phillips #00 Screwdriver.

Step 4



- i** The rear case is firmly attached to the phone with clips. Do not be afraid to use a little extra force.
- Insert the Plastic Opening Tool in between the front and rear cases.
 - Pry with the Plastic Opening Tool around all edges of the phone until you free all the clips.

Step 5



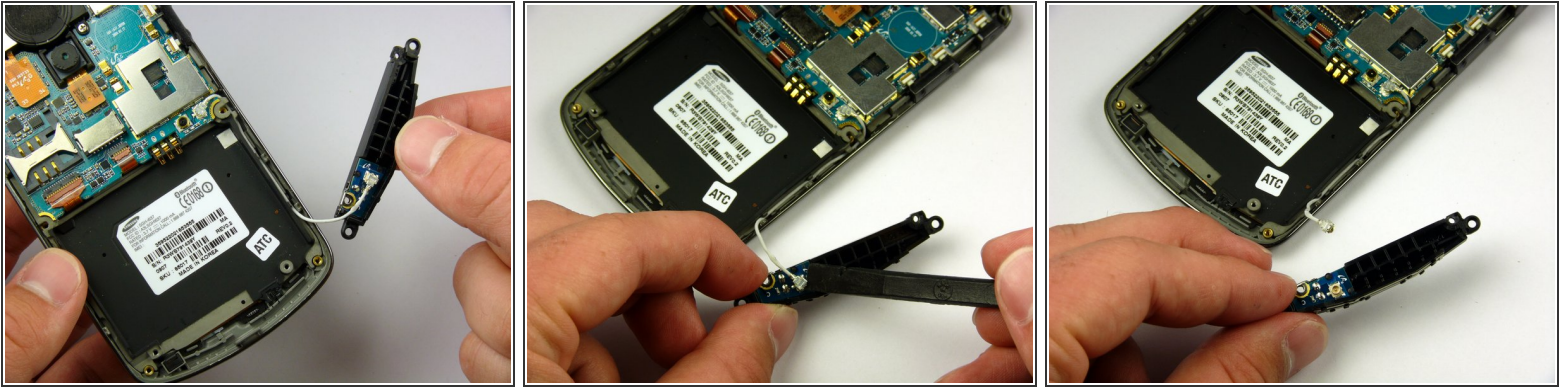
- Lift the rear case off of the phone.


Step 6 — Antenna



- Remove the two silver 4.30 mm screws on either side of the antenna using a Phillip's #00 Screwdriver.

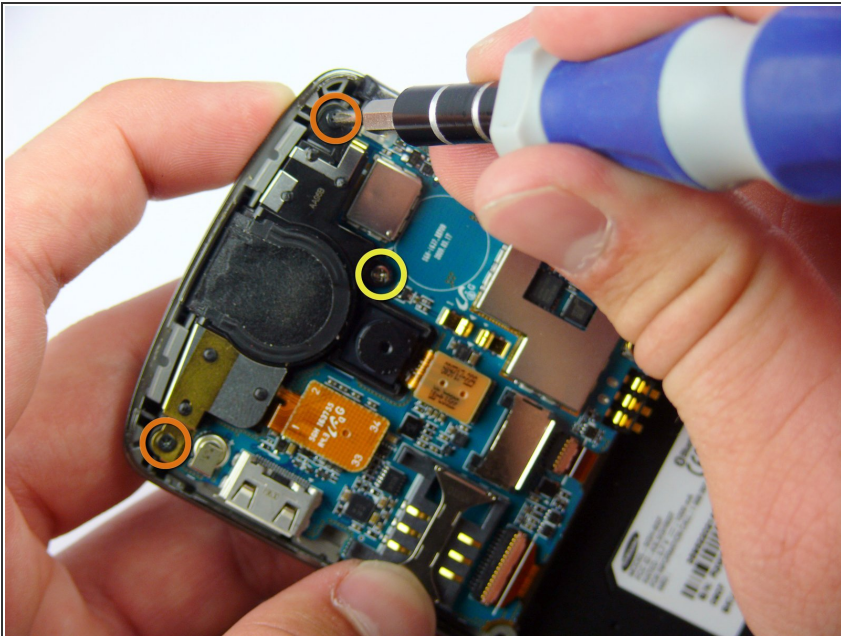
Step 7



 There is a wire under the antenna connecting it to the Motherboard. Do not pull off the antenna just yet.

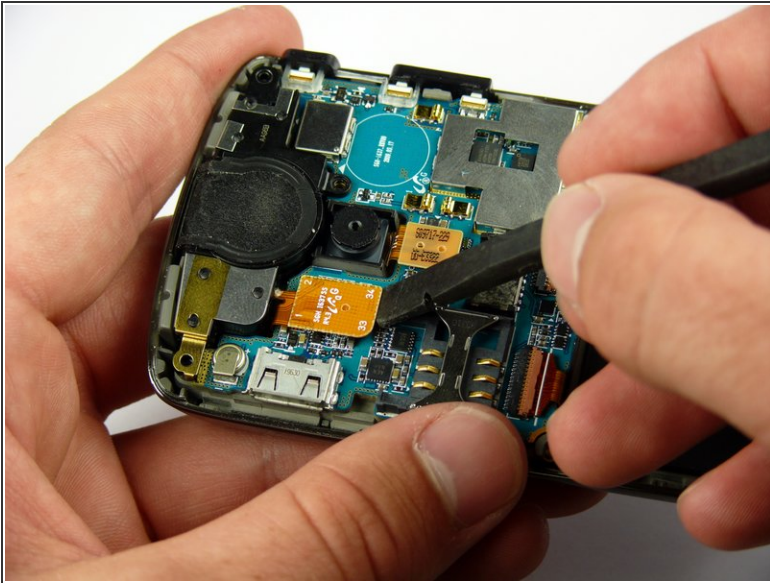
- Use a spudger to remove the wire connector under the antenna.

Step 8 — Speaker



- Remove the two black 7.30 mm screws on the top right and left corners of the Motherboard using a Phillips #00 Screwdriver.
- Remove the silver 4.50 mm screw located below the speaker using a Phillips #00 Screwdriver.

Step 9



- Use the spudger to detach the speaker ribbon cable.

Step 10



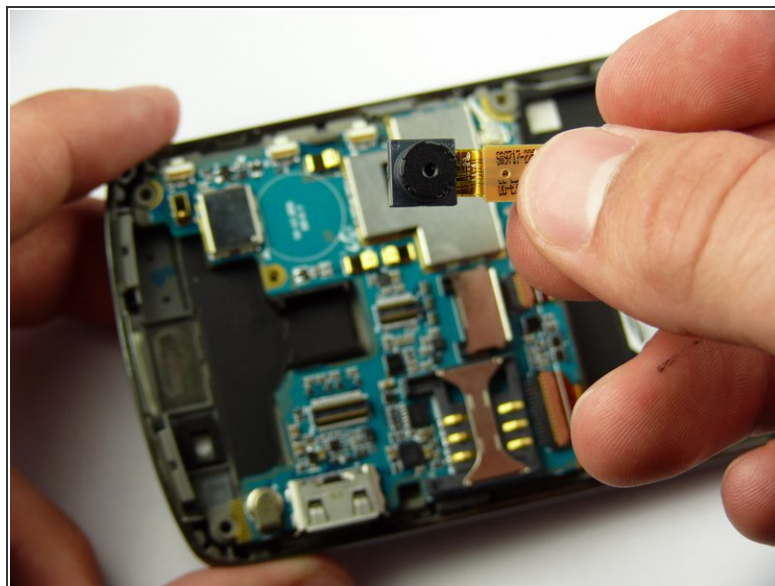
- Lift the speaker out of its compartment.

Step 11 — Motherboard



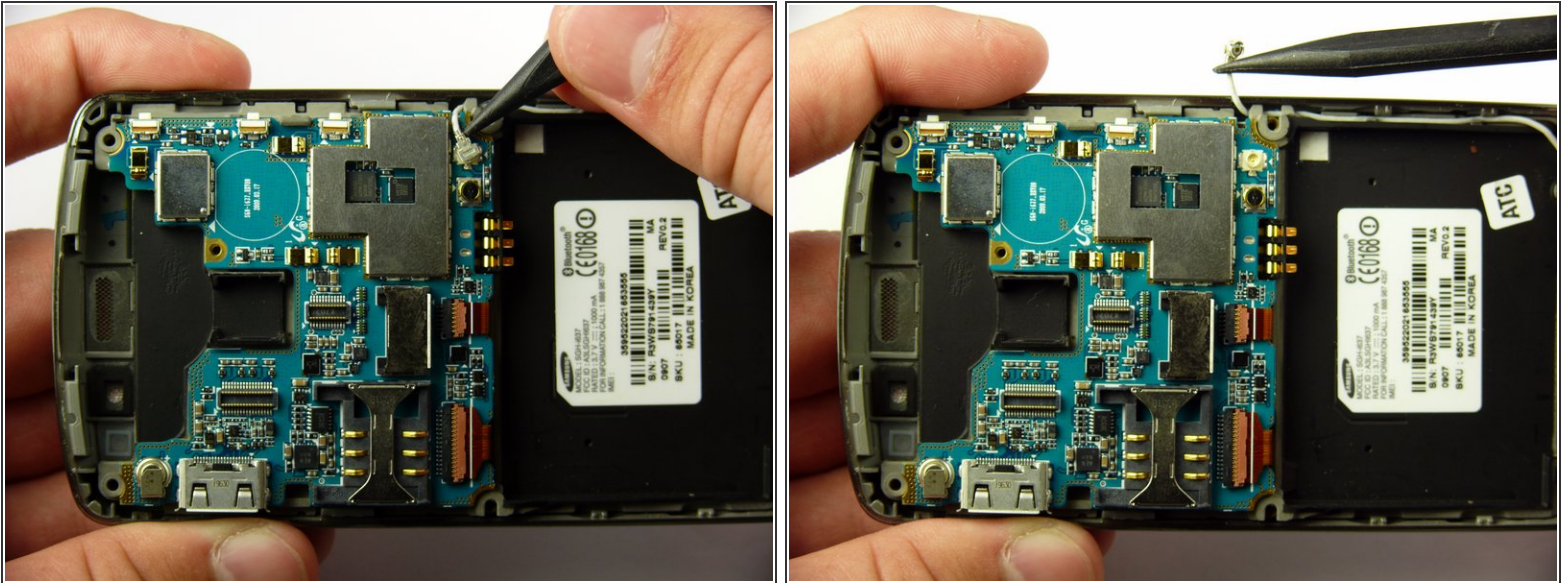
- Remove the power and volume buttons on the right side of the Motherboard.

Step 12



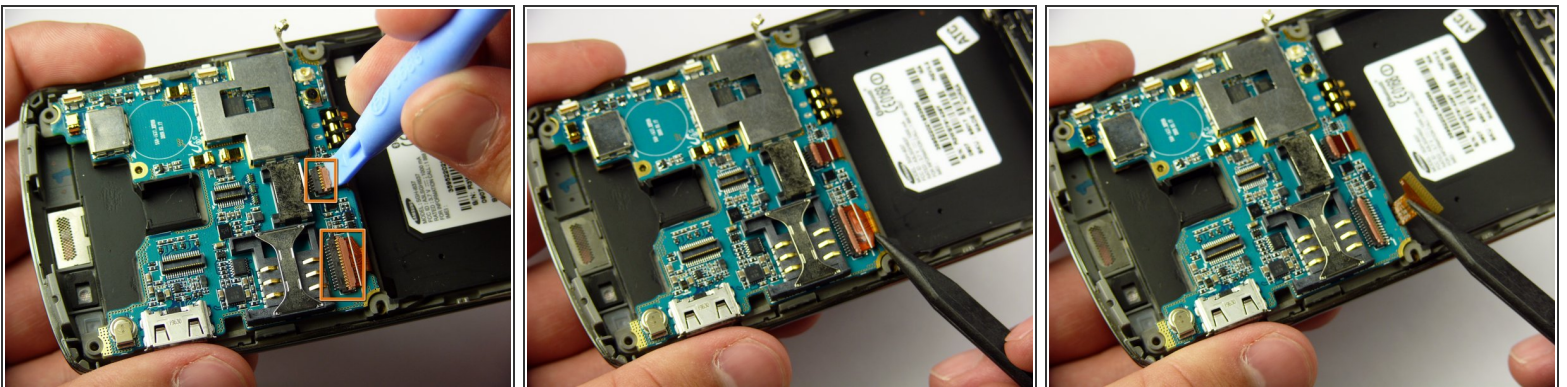
- Use a spudger to detach the camera ribbon cable.
- Lift the camera off of the Motherboard.

Step 13



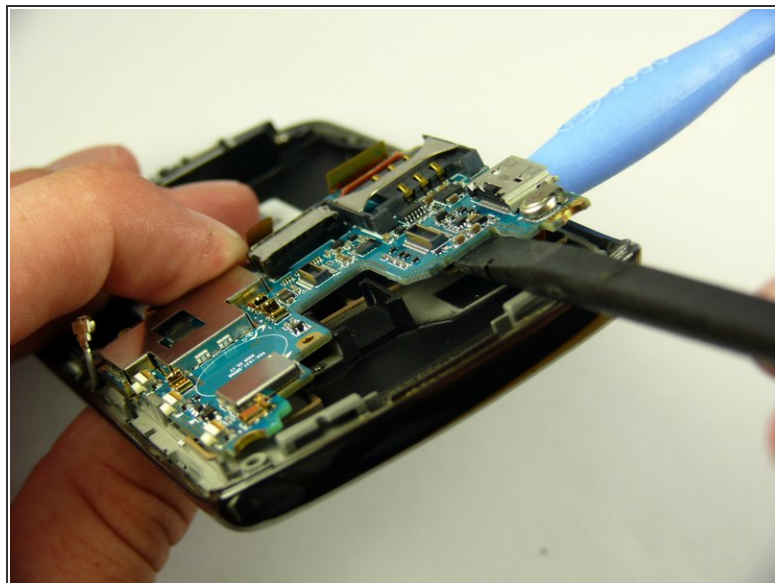
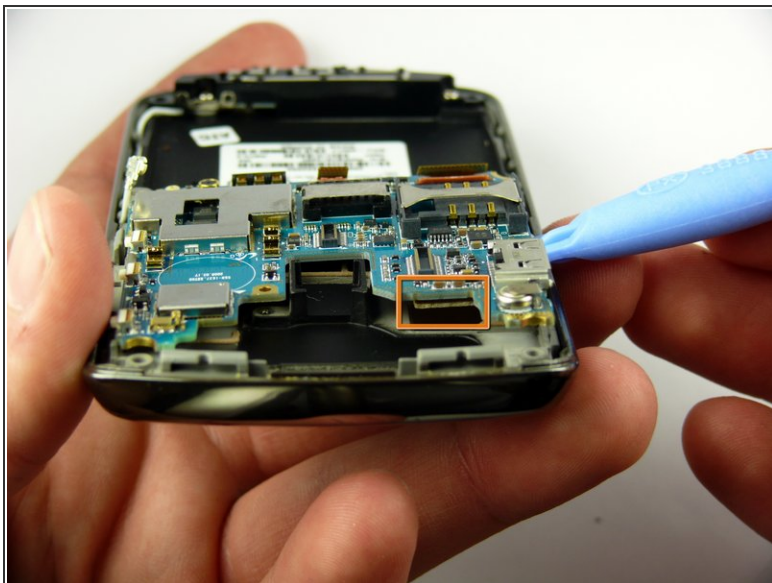
- Use a spudger to disconnect the white antenna wire on the bottom right corner of the Motherboard.


Step 14



- Use a Plastic Opening Tool to lift the flaps of the ZIF connectors to release the ribbon cables near the bottom of the Motherboard.
- Use a spudger to carefully pull the ribbon cables away from the ZIF connectors.

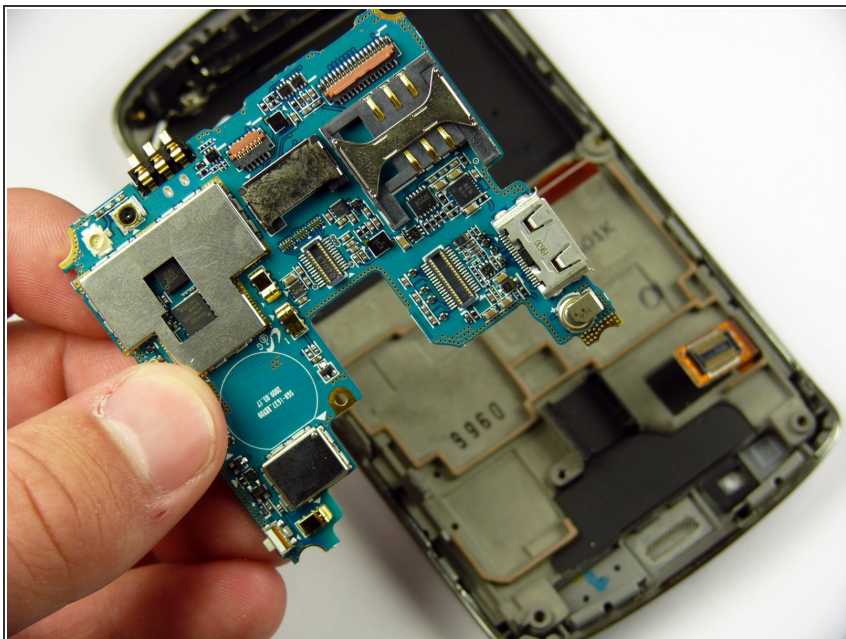
Step 15



 There is a ribbon cable under the Motherboard connecting it to the LCD. Do not pull off the Motherboard just yet.

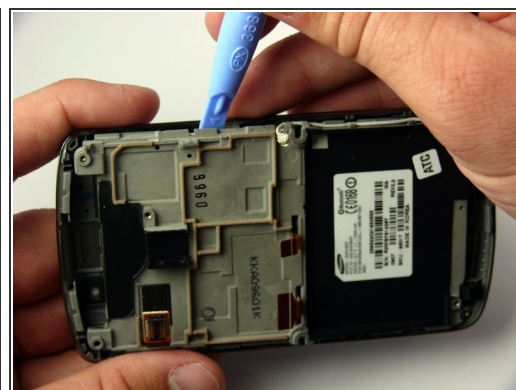
- Insert the Plastic Opening Tool under the upper left corner of the Motherboard to help reveal the ribbon cable.
- Use a spudger to disconnect the Motherboard ribbon cable.

Step 16



- Lift the Motherboard off of the phone.

Step 17 — LCD



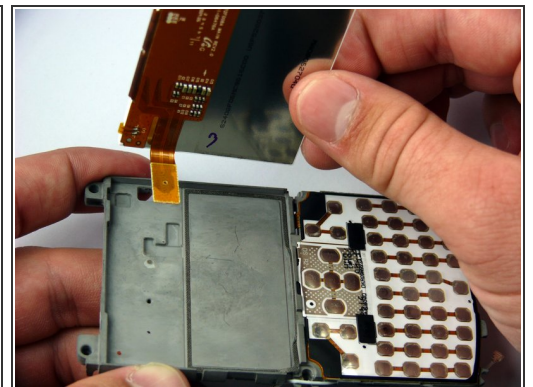
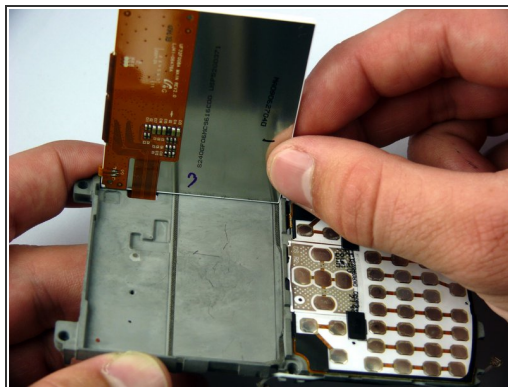
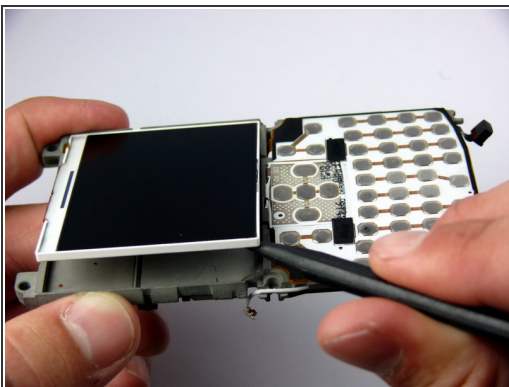
- i** The LCD frame is firmly attached to the phone with clips. Do not be afraid to use a little extra force.
- Insert the Plastic Opening Tool between the LCD frame and the front case of the phone.
 - Slide the Plastic Opening Tool around the LCD frame to detach all of the clips.


Step 18



- Lift up the LCD frame.

Step 19



 There is a hanging ribbon cable connected to the LCD screen that passes through the LCD frame.

- Insert the spudger under the bottom left corner of the LCD screen.
- Use the spudger to gently pry the LCD screen out of its frame.
- Gently remove the screen from the frame.

To reassemble your device, follow these instructions in reverse order.

This document was generated on 2020-11-28 02:14:24 AM (MST).

