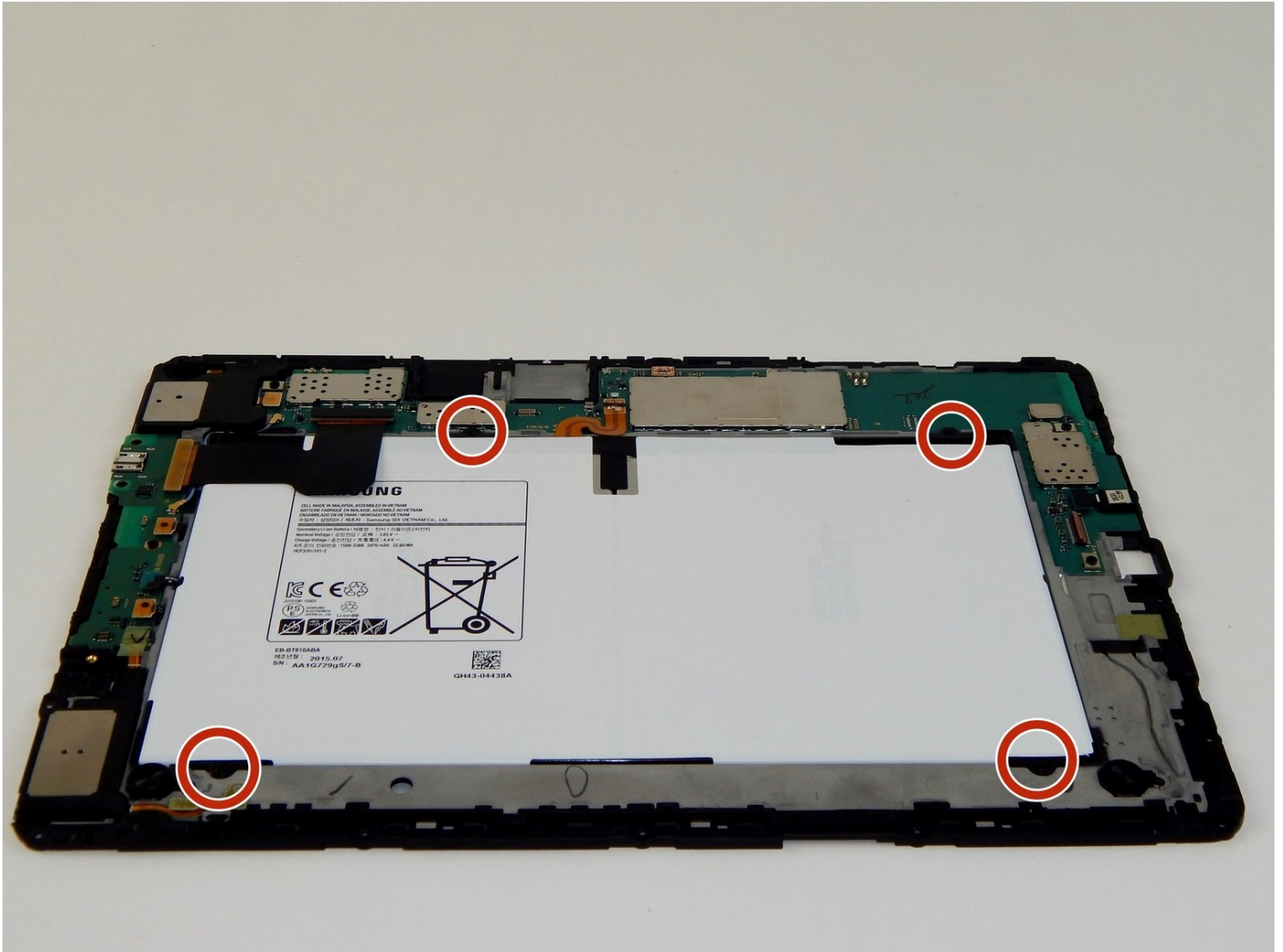




Samsung Galaxy Tab S2 Battery Replacement

Does the charge not hold for the device long?...

Written By: Jovina Martinez



INTRODUCTION

Does the charge not hold for the device long? Does the device randomly shut off and not turn back on? Replacing your battery may fix this problem.

TOOLS:


Precision Tweezers Set (1)
Heavy-Duty Suction Cups (Pair) (1)
iFixit Opening Tool (1)
iOpener (1)
Suction Handle (1)
Tweezers (1)
Phillips #1 Screwdriver (1)


PARTS:

Galaxy Tab S2 9.7 Battery (1)

Step 1 — Screen



 Working on your device while it is turned on may result in an electric shock. Be sure to shut down and unplug your device before you begin.

 Removing the screen may be difficult due to strong adhesives.

- Apply heat to all the seams of the device using an iFixit iOpener or heat gun in order to loosen the adhesive around the edges of the screen.

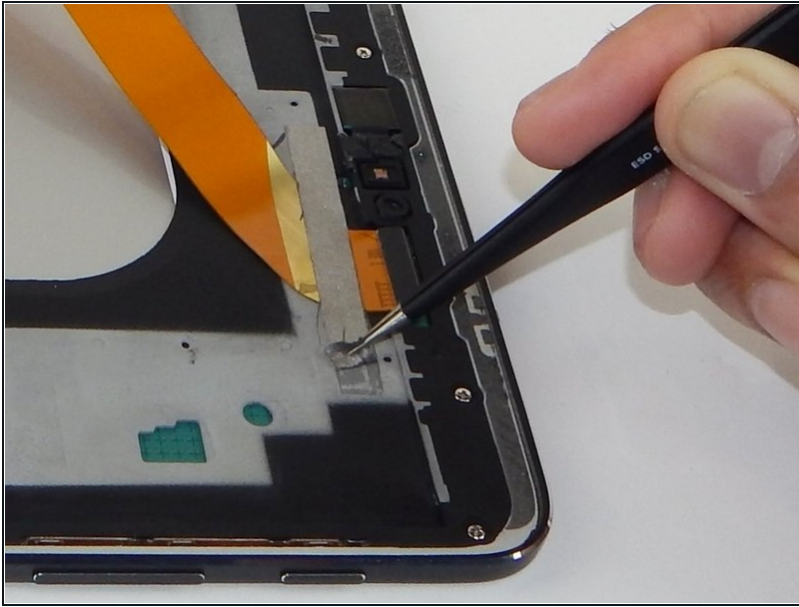
Step 2



- Insert the plastic opening tool into the gap on the side of the tablet, near a corner where you want to start removing the screen.
- Place the small suction cup on the screen near the corner that the plastic opening tool is placed.
- Lift the small suction cup up while pushing down with the plastic opening tool to remove screen (you may need to have someone else hold the device down for proper leverage).

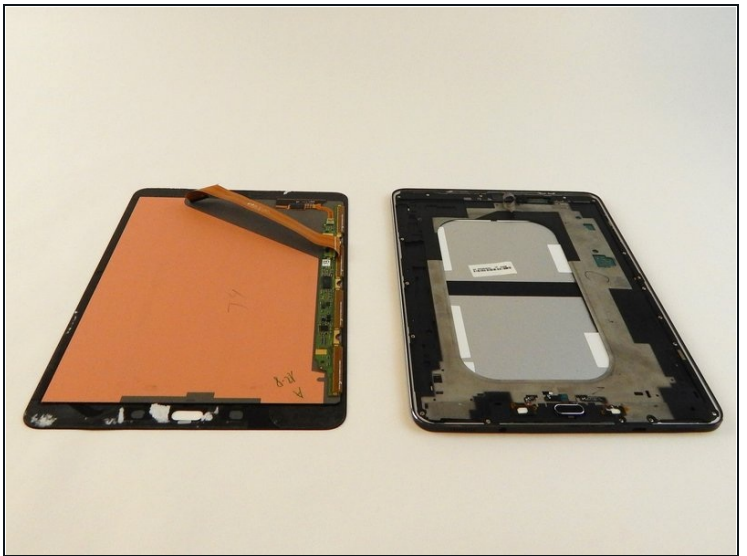
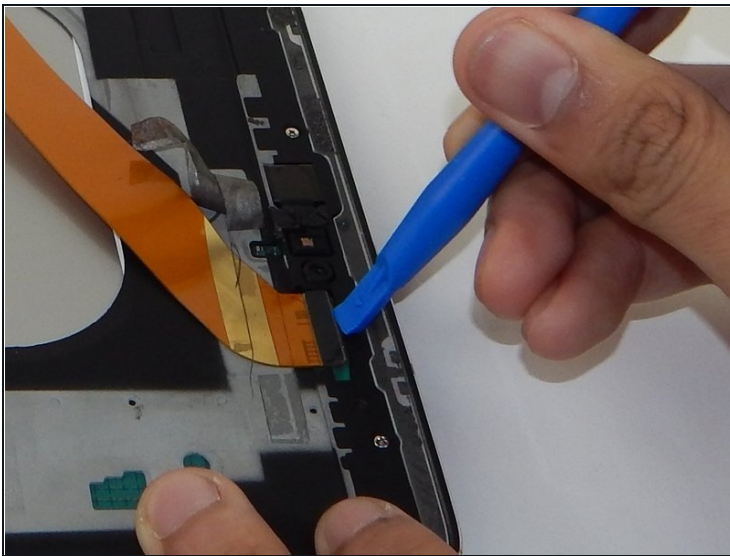
⚠ A ribbon cable is attached to the back of the screen. Avoid lifting or moving the screen more than 3-4 inches before disconnecting the ribbon cable or you could damage the device.

Step 3



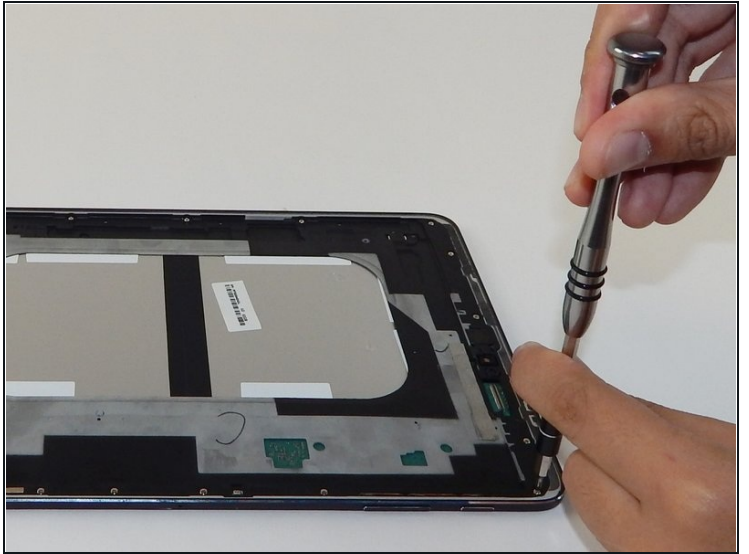
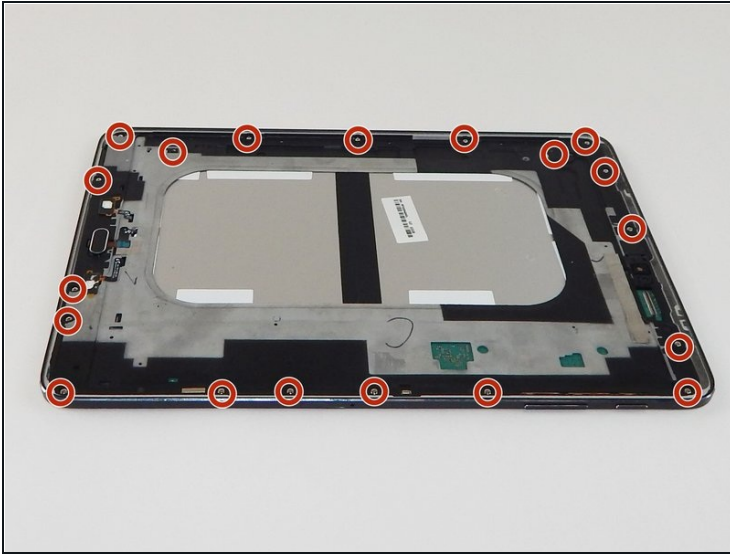
- ① A piece of silver tape is placed over the gold ribbon cable connecting the screen to the tablet.
- Use the [tweezers](#) to carefully remove the silver tape.

Step 4



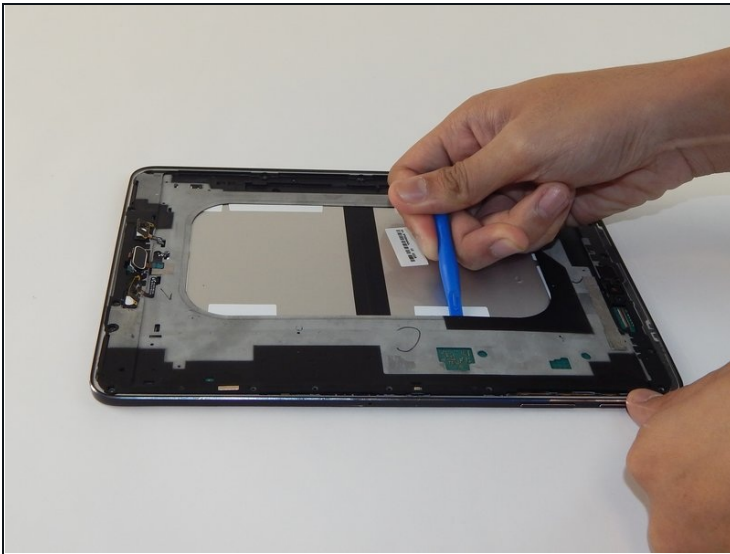
- With the plastic opening tool gently lift to disconnect the gold ribbon cable that attaches the screen to the base tablet.

Step 5 — Panel Replacement



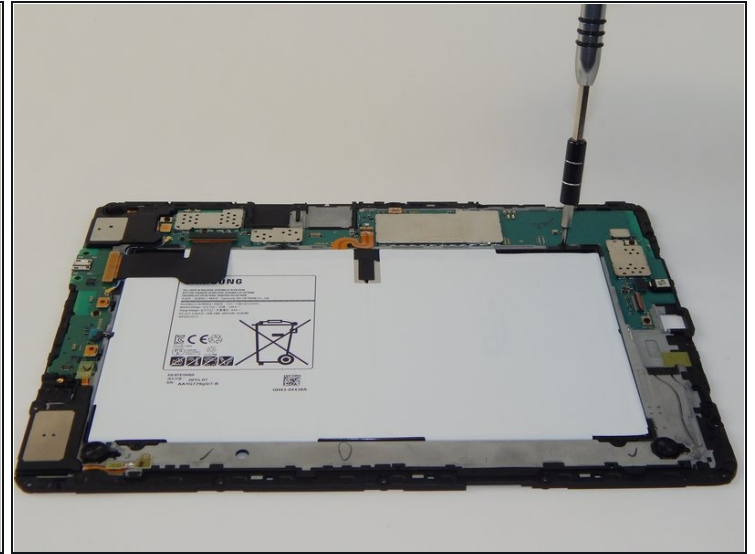
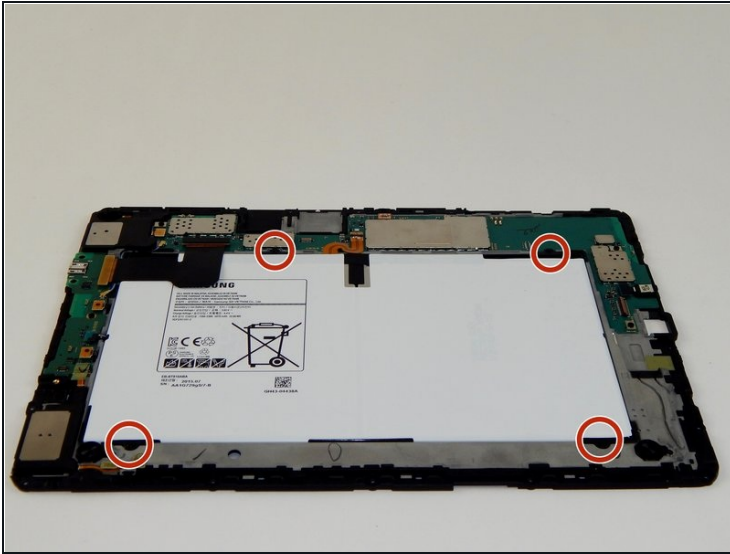
- Remove the nineteen 3mm Phillips #1 screws.

Step 6



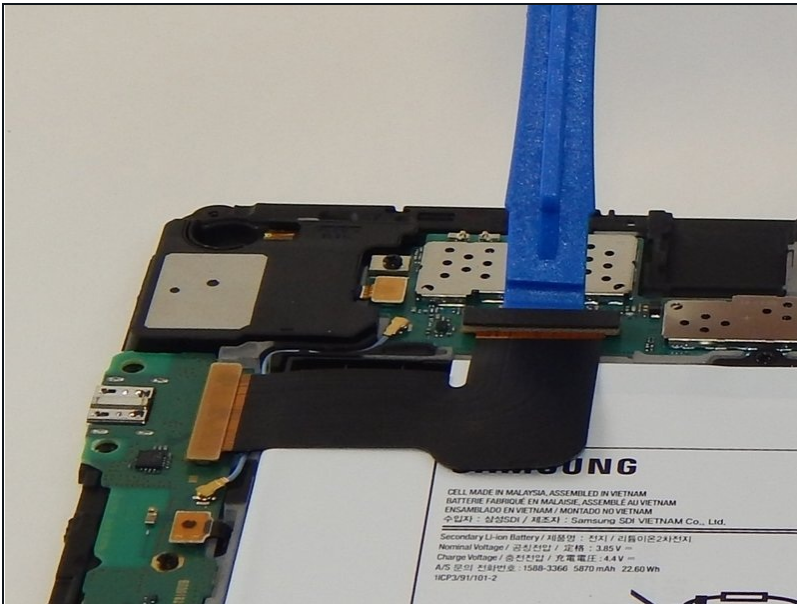
- Pry open the next layer of the device using the plastic opening tool.
- ① Even though the device separates along the outside edge, using the inside edge (as pictured) may help with leverage.

Step 7 — Battery



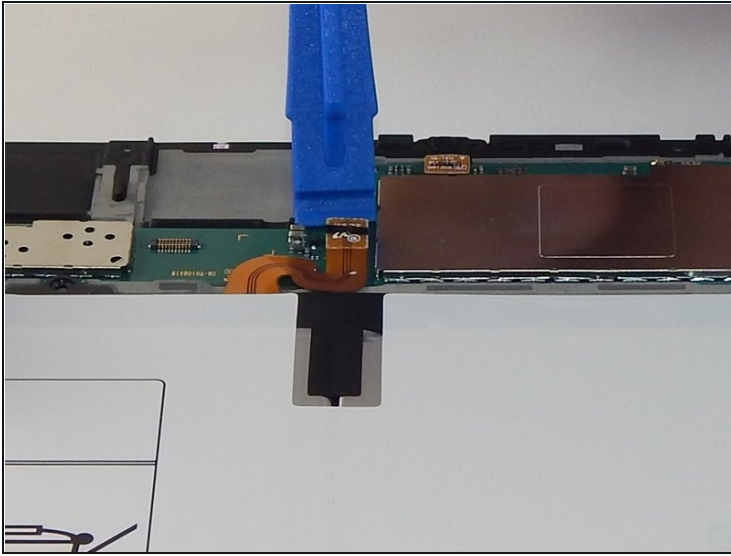
- Remove the four black 3 mm Phillips #1 screws that hold the battery in place.

Step 8



- Use a plastic opening tool to lift the black flap on the ZIF connector located in the top left corner of the device.
- Once the connector is unlocked, pull the ribbon cable out with [tweezers](#).
- ① This cable does not need to be completely removed, only one side is enough to allow the battery to be taken out.

Step 9



- Using the plastic opening tool remove the cable that connects the battery to the device.
- Now you can remove the battery with your hands.

To reassemble your device, follow these instructions in reverse order.