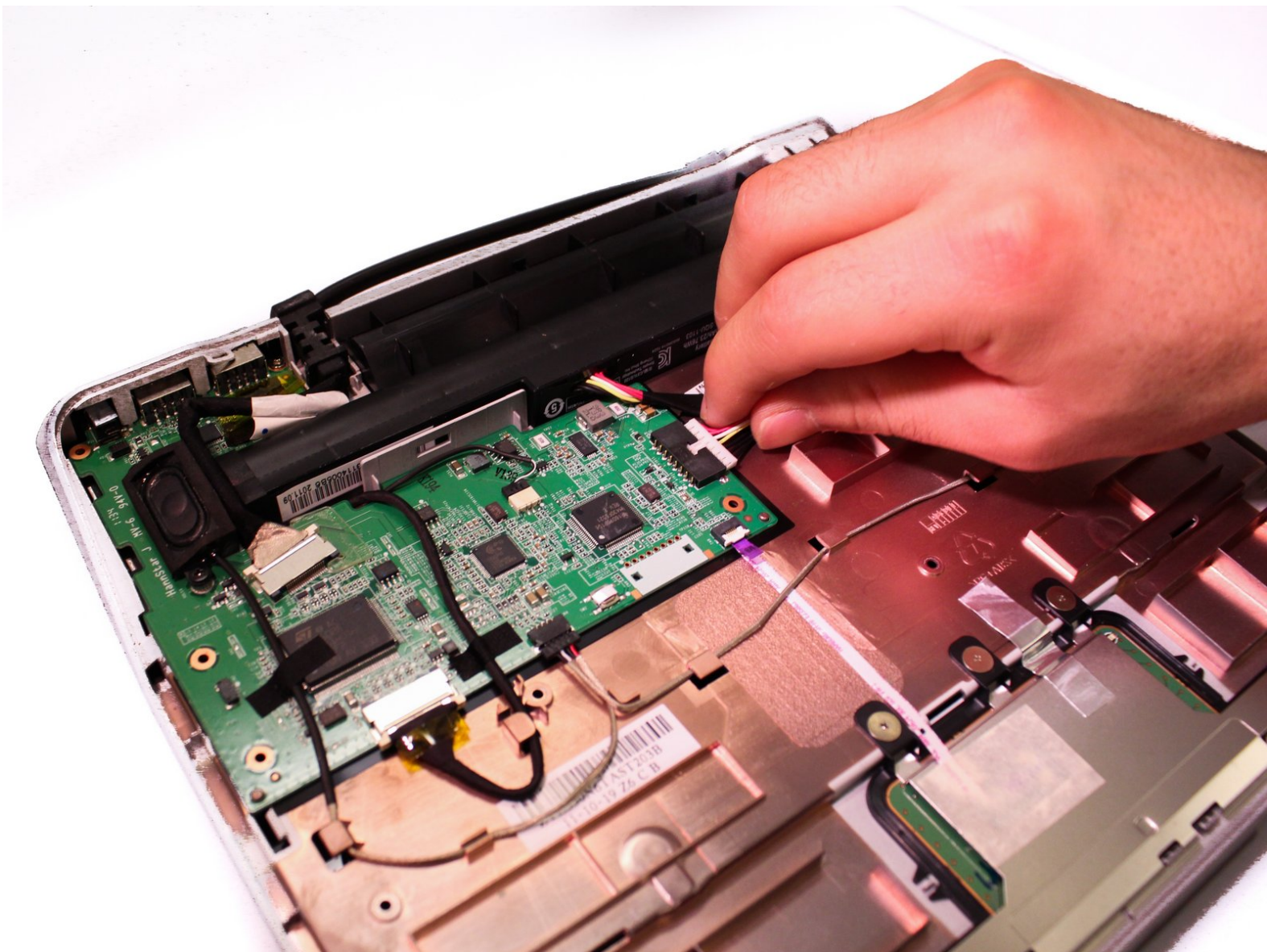




Motorola Lapdock 100 Battery Replacement

The guide explains how to remove the bottom case and replace the battery. These guides might be helpful for the other guides.

Written By: Anthony Aiumu



INTRODUCTION

To complete this guide you will need to remove the bottom case of the lapdock and remove the battery. To do this you will remove the keyboard and the screws underneath it. After completing the following steps you will need to remove the four screws underneath of the lapdock and then continue to remove the battery.



TOOLS:

- [Metal Spudger](#) (1)
 - [Phillips #00 Screwdriver](#) (1)
 - [iFixit Opening Tools](#) (1)
-

Step 1 — Lower Case



- To take off the Keyboard there are three tabs at the top of the Keyboard in the locations shown in the picture that you must press and unclip. They are located behind each of the keys that are removed.
- ⚠ You do not need to remove any keys to unclip the keyboard. We did this for picture purposes only.

Step 2



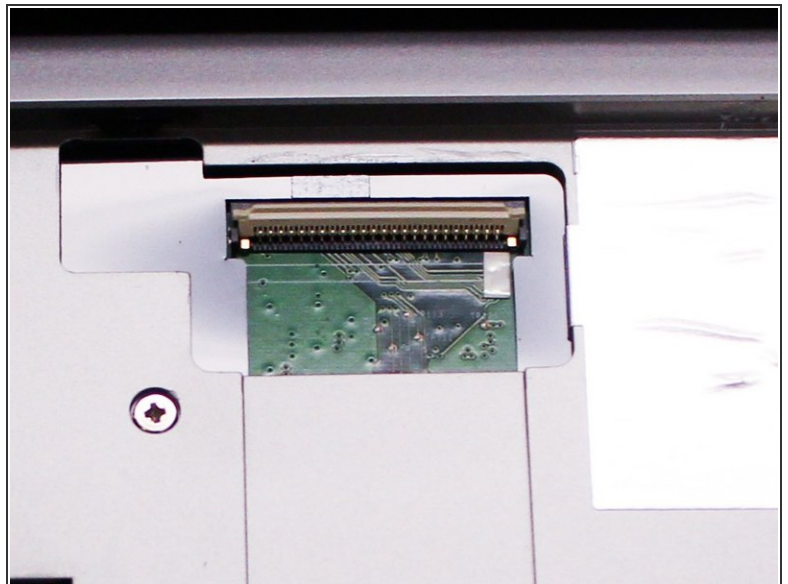
- You can use a small metal spudger to depress each tab to avoid scratching the keyboard.

Step 3



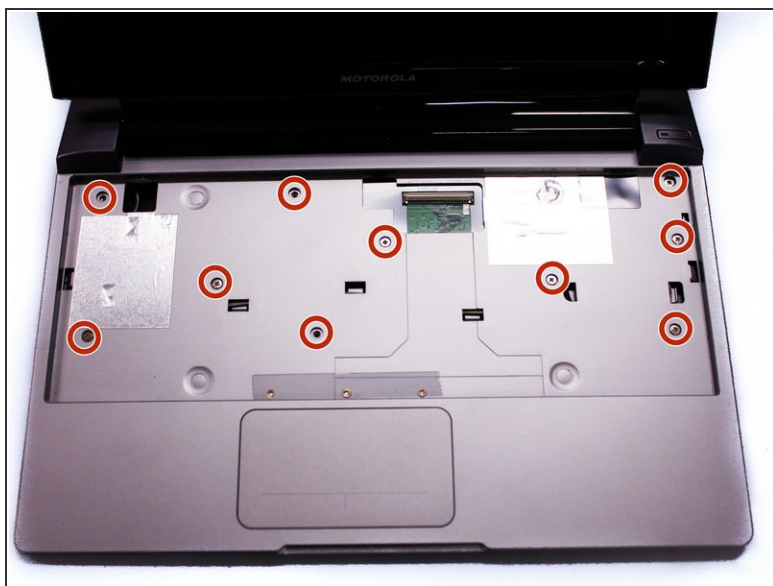
- Lift up keyboard so that you are able to see the ribbon cable connected to the contact.

Step 4



- Flip up the ZIF connector holding the ribbon cable on the contact as shown in the two pictures and then gently disconnect the ribbon cable.

Step 5



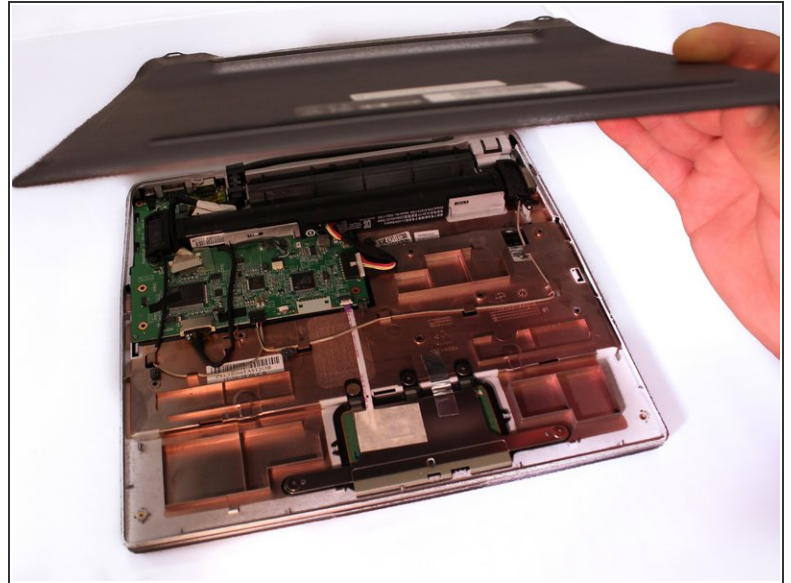
- After we remove the Keyboard, you can clearly see the screws under it. Remove the ten 3mm long phillips head screws.

Step 6



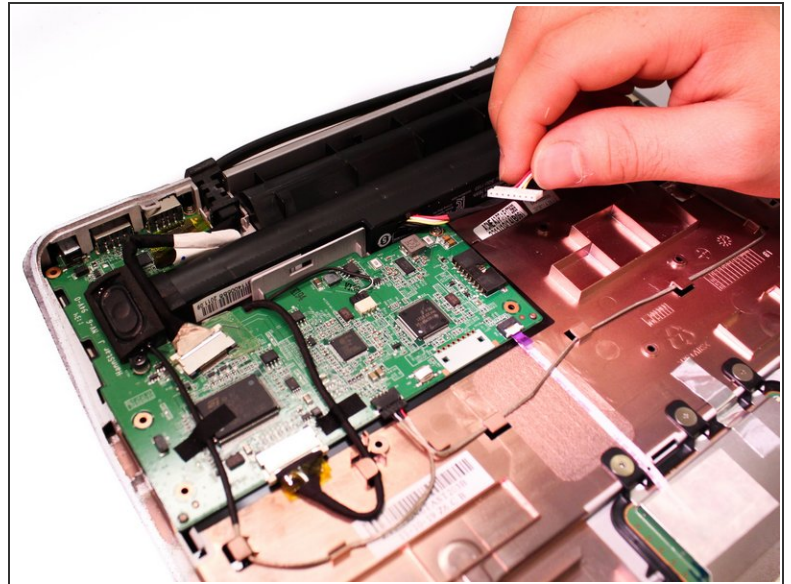
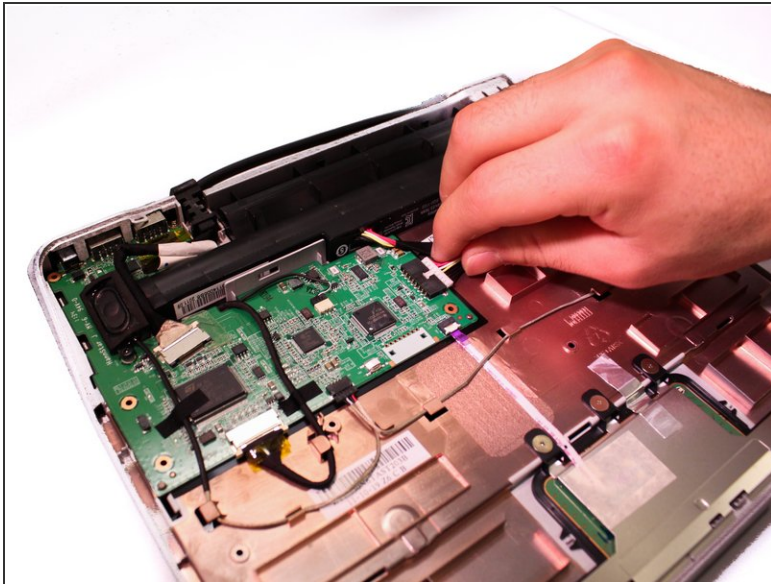
- Flip over the Lapdock and remove the four 3.5mm long phillips head screws from the bottom.

Step 7



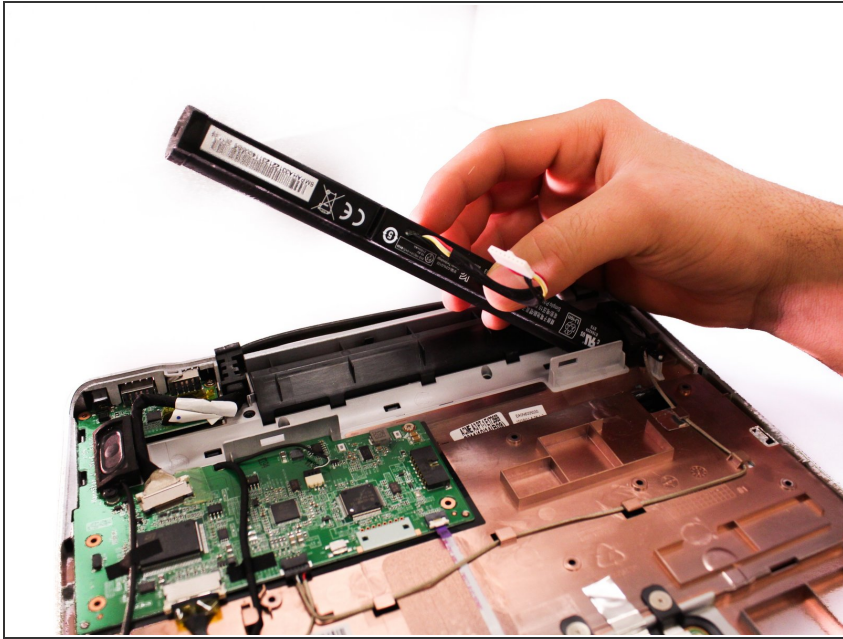
- Use a plastic prying tool to take off the bottom case. Make sure that all of the clips are unclipped before trying to remove the case.

Step 8 — Battery



- Unplug battery from motherboard.

Step 9



- Remove the battery.

To reassemble your device, follow these instructions in reverse order.