



# Epson Stylus Photo 820 Buttons Replacement

Follow this guide to replace the buttons on an Epson Stylus Photo 820 printer.

Written By: Brandon Ivy



## INTRODUCTION

The plastic buttons on the Epson Stylus Photo 820 printer can break or become worn with use. This guide will demonstrate removal of the Epson Stylus Photo 820 printer top cover and replacing of the printer buttons.



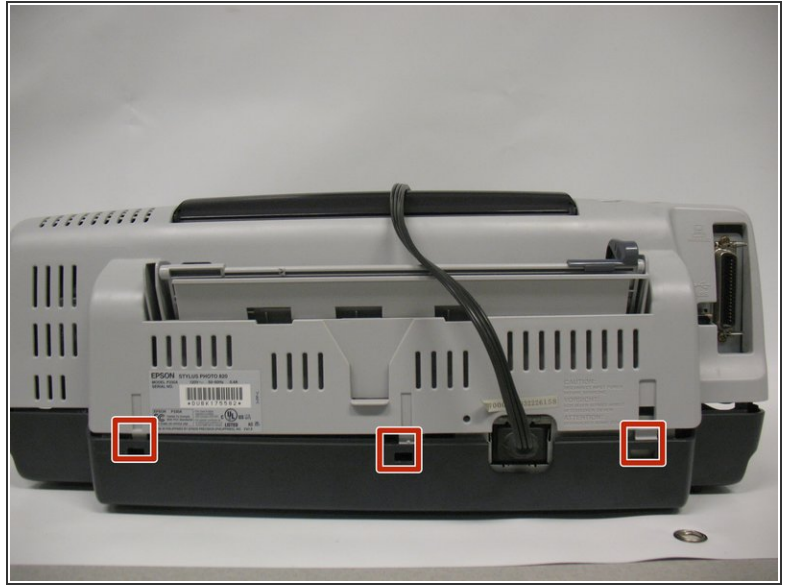
### TOOLS:

- [Flathead 3/32" or 2.5 mm Screwdriver](#) (1)

*A skinny flathead screwdriver easily replaces the tool above.*

- [2.5 mm Flathead Screwdriver](#) (1)
  - [iFixit Opening Tool](#) (1)
-

## Step 1 — Top Cover



- To remove the top cover of the printer, you have to first release it from several tabs.
- ⓘ This may take more than one person to complete.
- These three are the easiest tabs to remove. They are located on the back side of the printer.

## Step 2



- Push the tab in with one of the plastic opening tools.
- Keep the tab pushed in by leveraging the tool between the tab and the hole. Pull up on the case so that the tab doesn't lock back into place.
- Repeat this process with the furthestmost right tab, then proceed with the middle tab.

## Step 3

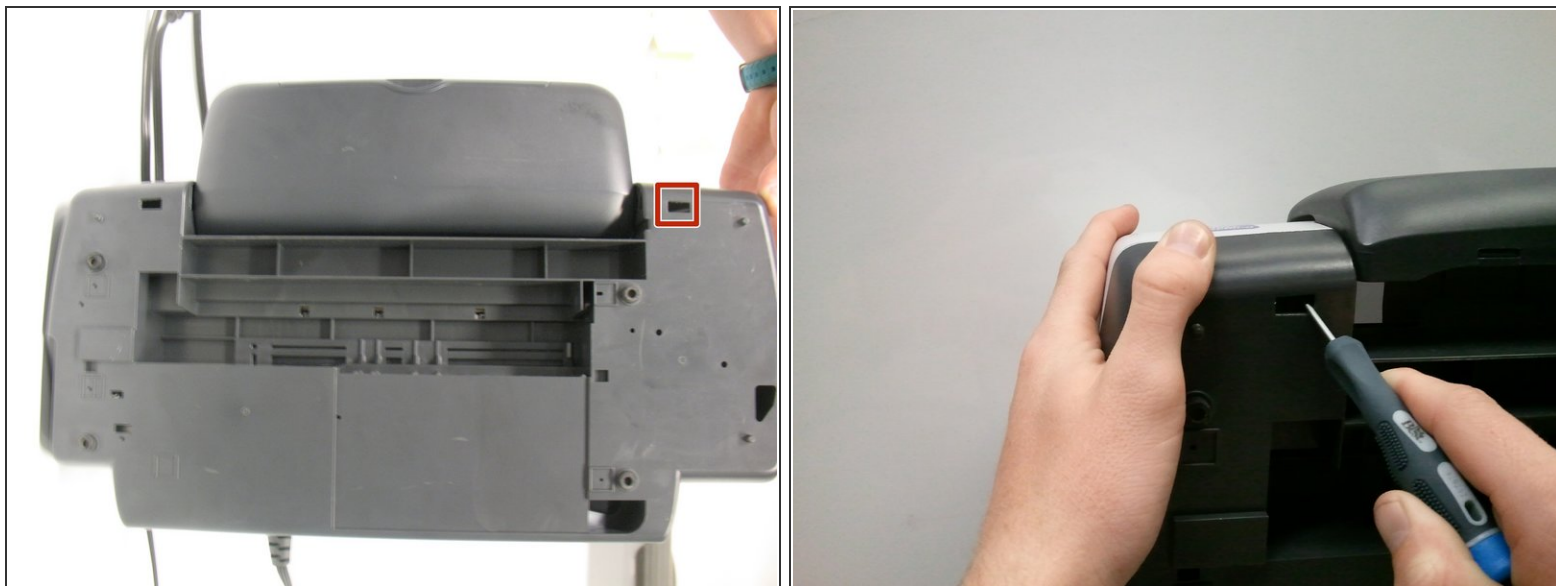


**i** It is recommended that Steps 3 and 4 be completed simultaneously. The tabs are identical, just on opposite sides.

- Insert the pointed end of a spudger into the hole on the bottom left corner of the printer and pry out the tab.

**⚠** This tab is the easiest to break, so be very careful.

## Step 4



- Insert the pointed end of a spudger into the hole on the bottom right corner of the printer and pry out the tab.

## Step 5



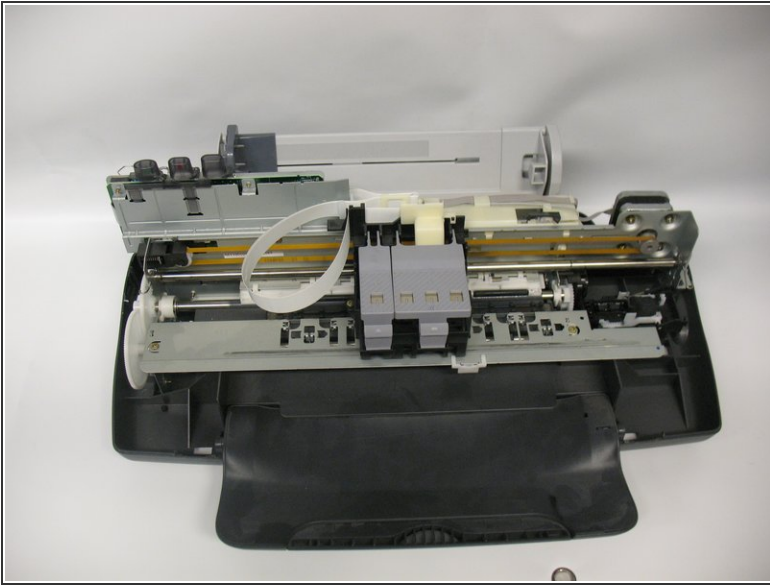
- The final two tabs can be more difficult to release. Viewing from the front, they are located in the back left and right corners of the printer.
- The release points for the tabs are located in holes on the depressed area of the base (darker piece).
- Use the pointed end of a spudger to pry out the tab.
  - Use one of the plastic tools to keep the tab pried out. Once it releases, push in towards the printer (viewing from the side) and pull up on the case.

## Step 6



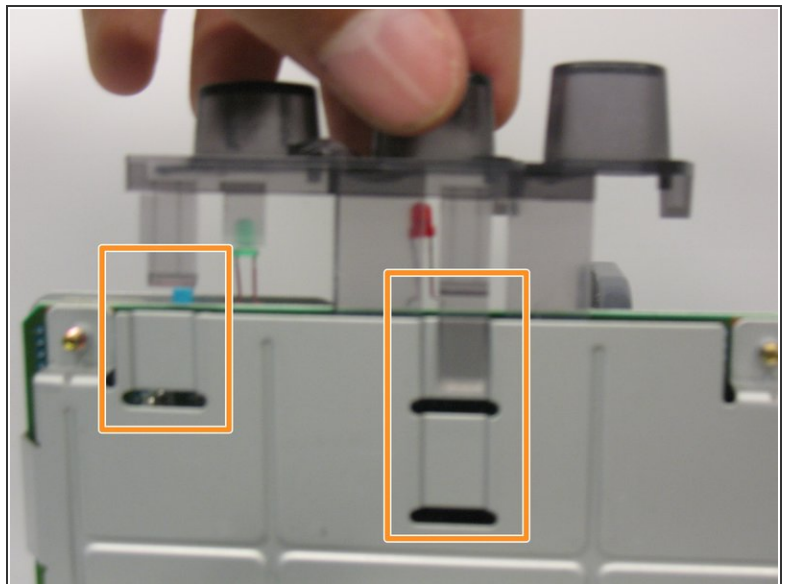
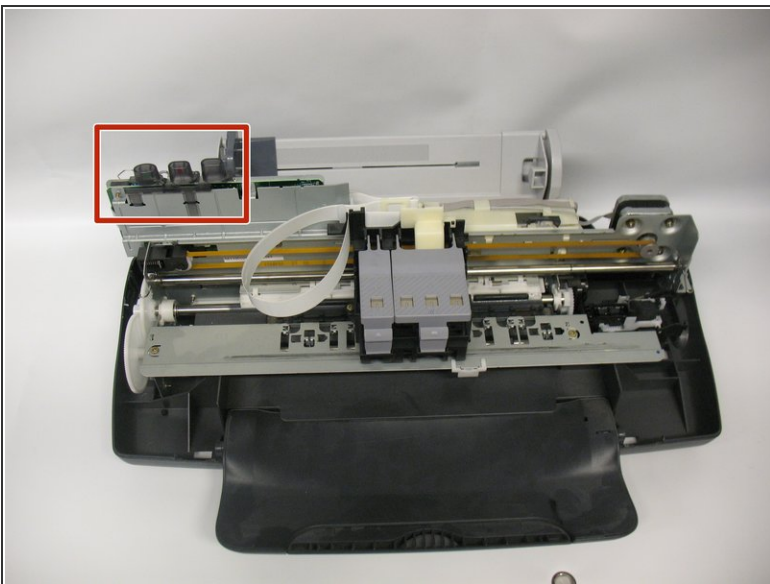
- All of the tabs have now been released.
- When trying to completely remove the cover, it gets caught on these two back components. Maneuvering around these can be tricky.
- Push the cover to the right slightly and then push it backwards (out of the screen in this picture). This should give it some wiggle room. Repeat this as necessary.

## Step 7



- Pull the cover up and off.

## Step 8 — Buttons



- Locate the buttons.
  - Push the tabs in and pull up on the whole button piece to remove it.
- ☑ Slide the replacement button piece into place until it clicks.

To reassemble your device, follow these instructions in reverse order.