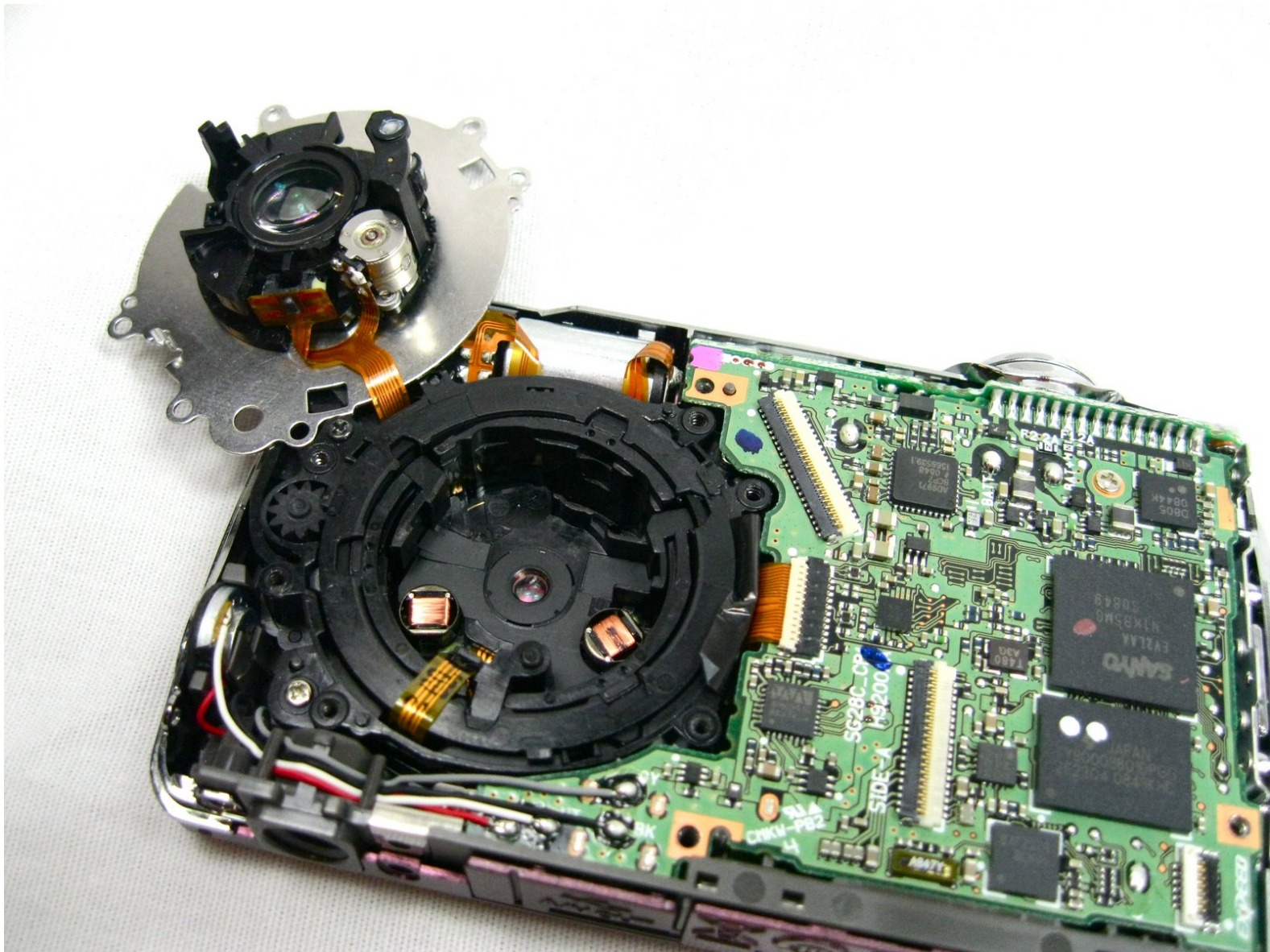




# Nikon Coolpix S220 Lens Replacement

This guide will teach you how to disassemble the lens of your Nikon Coolpix S220

Written By: Shauna



---

## INTRODUCTION

The guide will give step by step instructions on how to disassemble your camera until you can reach the lens and remove or clean it.

---

### TOOLS:

- [Phillips #00 Screwdriver](#) (1)
-

## Step 1 — Outer Cover



- Remove the two 2.8 mm screws on the left side of the camera.

## Step 2



- Remove the four 2.8 mm screws on the right side of the camera.

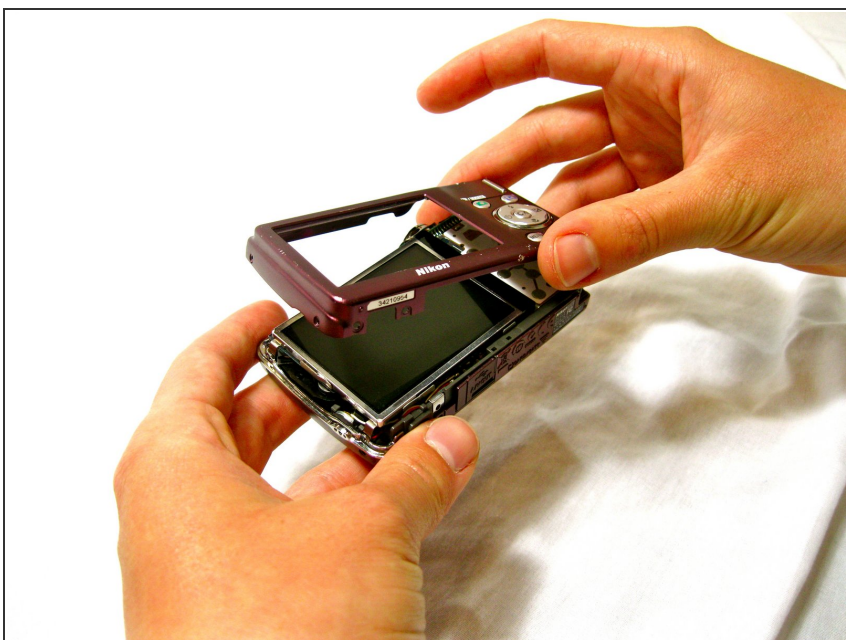


## Step 3



- Remove the three 4.1 mm screws on the bottom of the camera.

## Step 4



- Gently lift the rear cover from the camera.

## Step 5 — LCD



- Gently lift the screen out of its place.

**i** You will need to hold the screen slightly above the camera because it will still be attached to the camera by an orange ribbon cable.

## Step 6



- Use the tweezers to lift the ZIF connector which is holding the ribbon cables that connect the LCD screen to the motherboard.

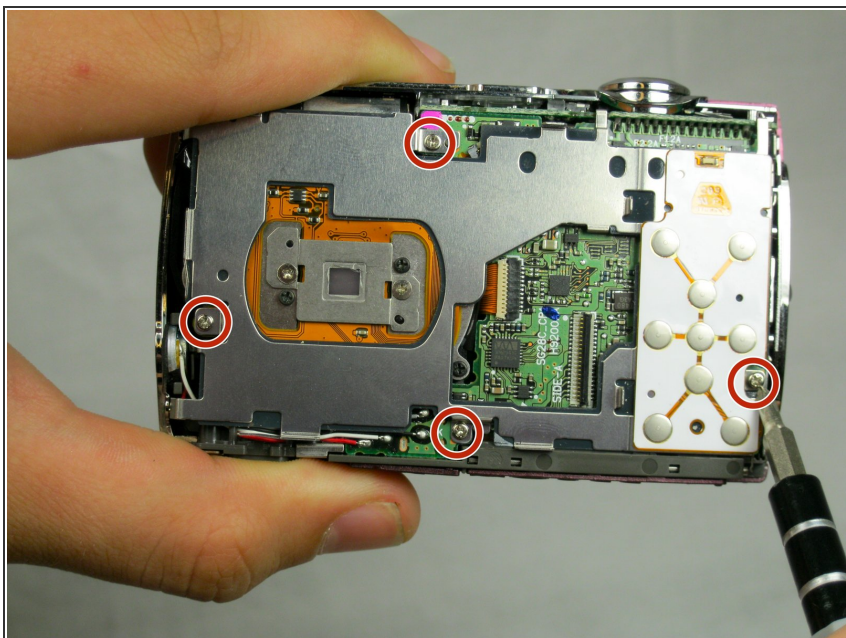


## Step 7



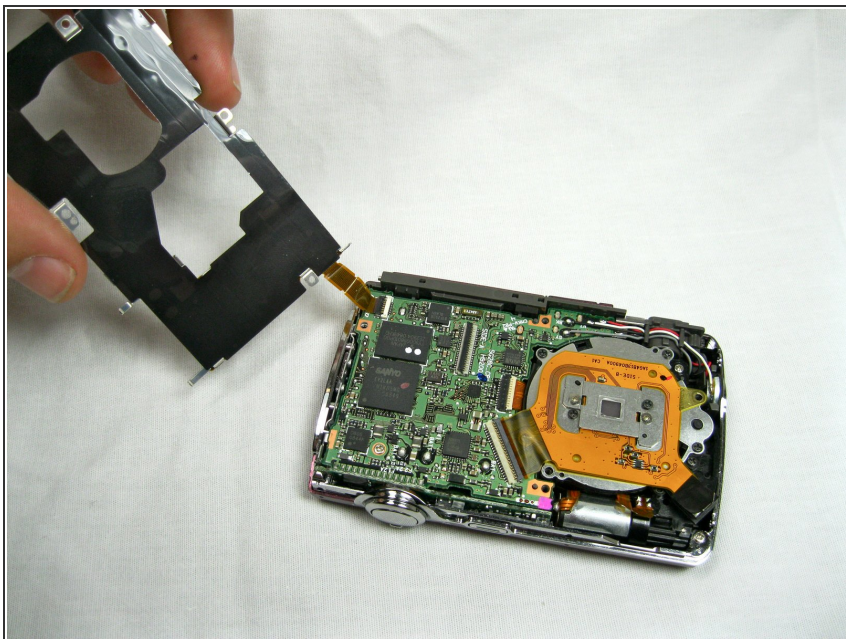
- Slowly pull the screen from the camera.

## Step 8 — Motherboard



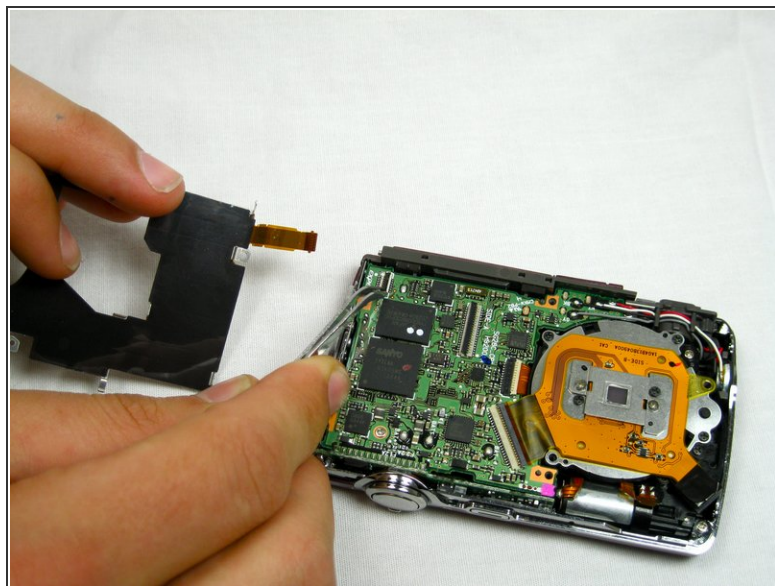
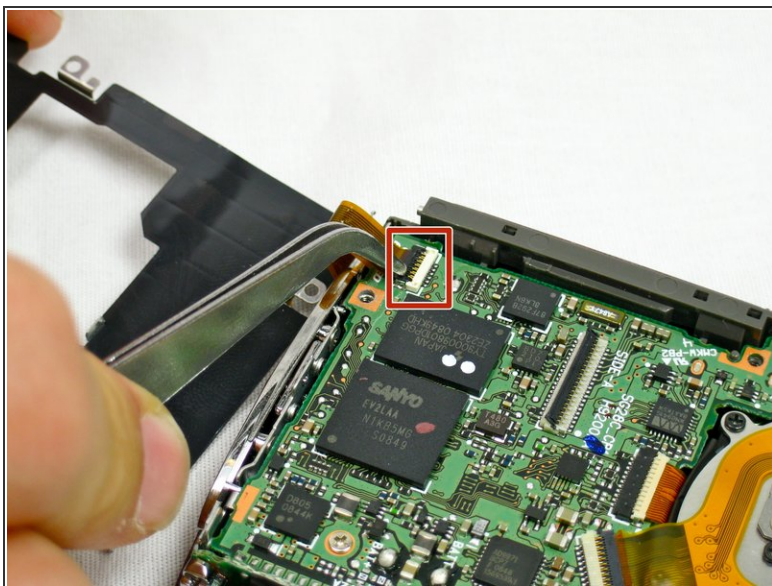
- Remove the four 3.8 mm screws located near the bottom right and top left of the LCD base plate.

## Step 9



- Lift up silver LCD base plate

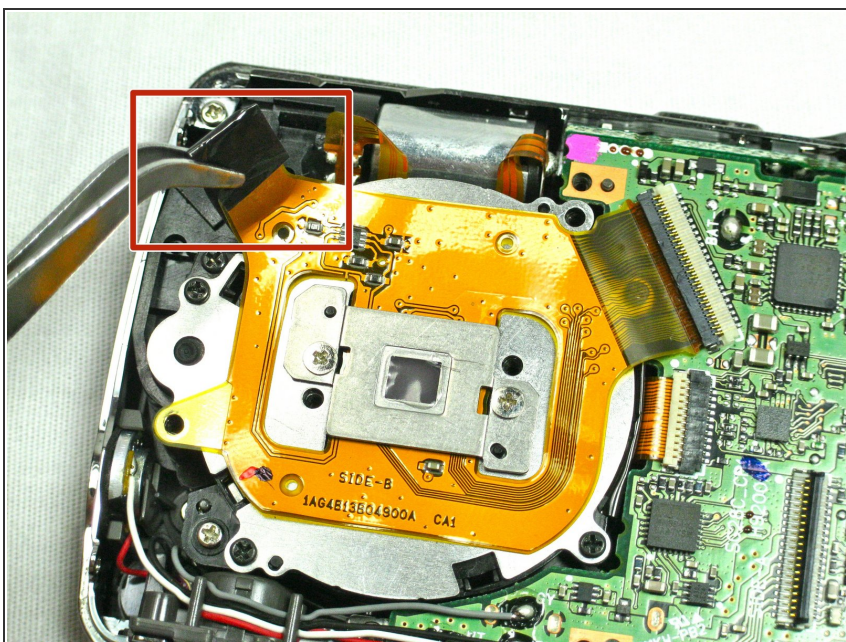
## Step 10



- Using tweezers, lift up the retaining flap on the ZIF connector securing the button panel ribbon cable.
- Slide the button panel ribbon cable out of its socket on the motherboard.

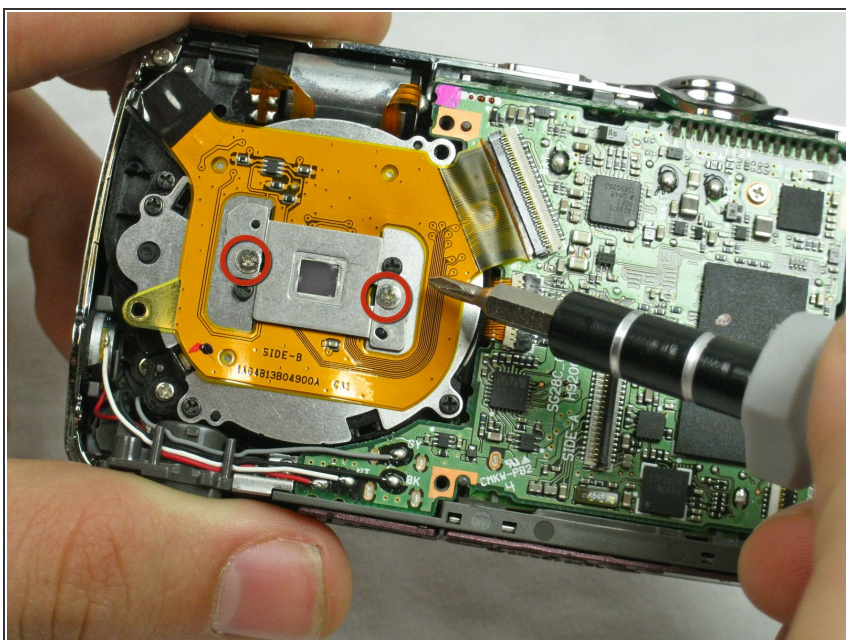


## Step 11 — Lens



- The black tape connecting it to the camera will lift up and allow you to release the left side of the rectangular plate.

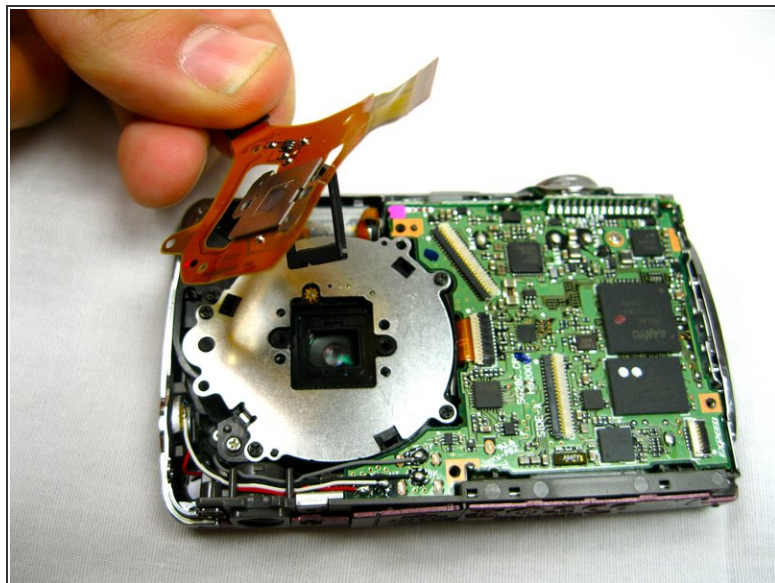
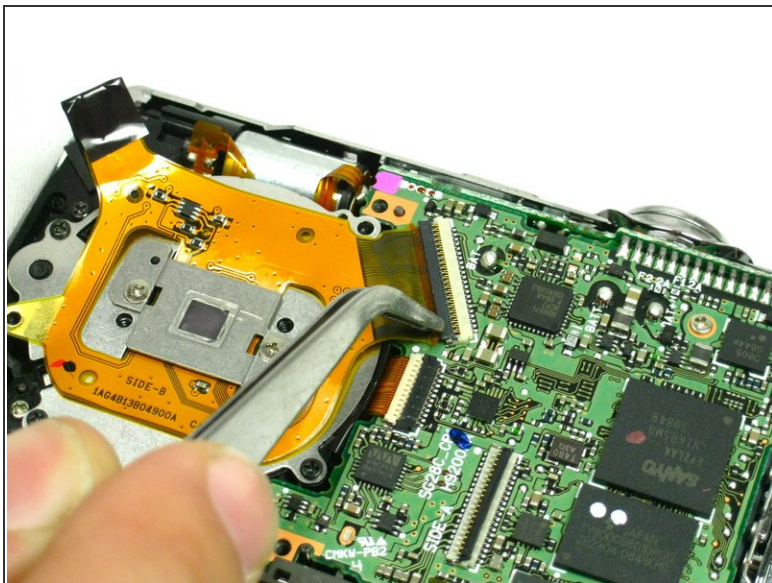
## Step 12



- Remove the two 3.1 mm screws on the orange rectangular plate over the lens.

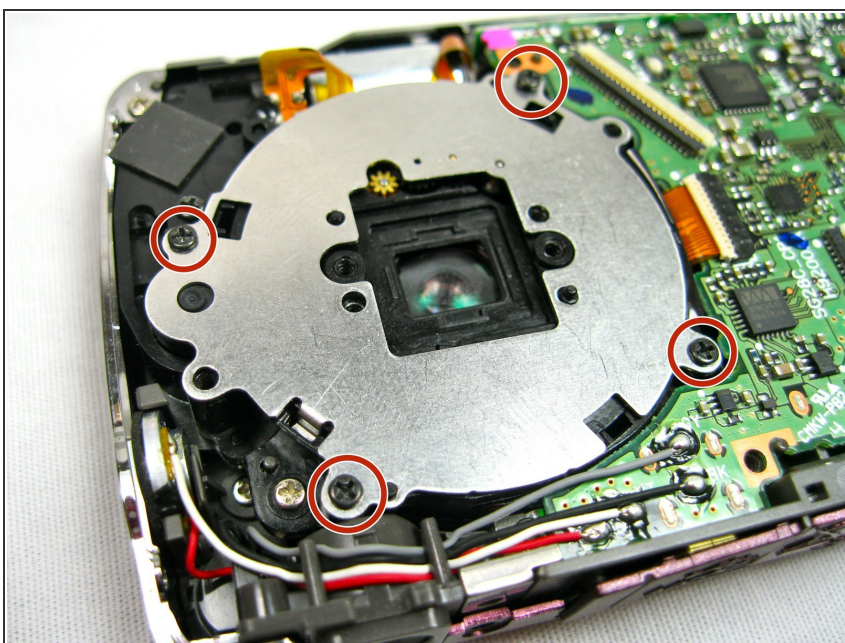


## Step 13



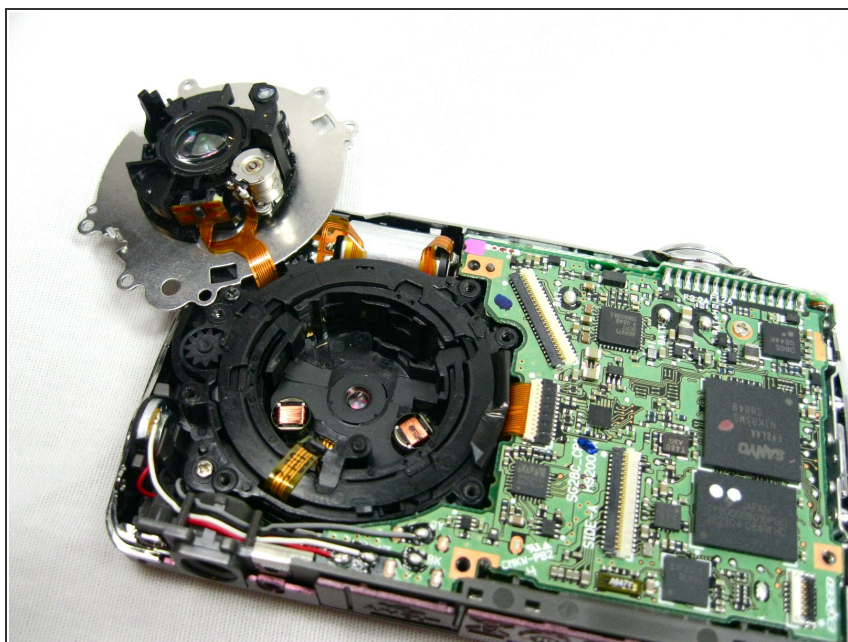
- Use tweezers to lift up the retaining flap on the ribbon cable's ZIF connector.
- Gently pull the ribbon cable from its socket on the motherboard and remove the plate assembly.

## Step 14



- Remove four 3.4 mm black screws from around the perimeter of the silver plate.

## Step 15



- Carefully pull out the plate the attached lens.
- ⓘ The lens will not completely be removed, but it will be accessible for cleaning.

To reassemble your device, follow these instructions in reverse order.