



# Jolla Teardown

Basic teardown of the Finnish made Jolla White 16GB - JP-1301

Written By: Shannon McWilliam



---

# INTRODUCTION

The Jolla smartphone is a smartphone produced by Finnish company Jolla Oy that runs the Sailfish OS, released on 27 November 2013. Let's see what's inside!

---



## TOOLS:

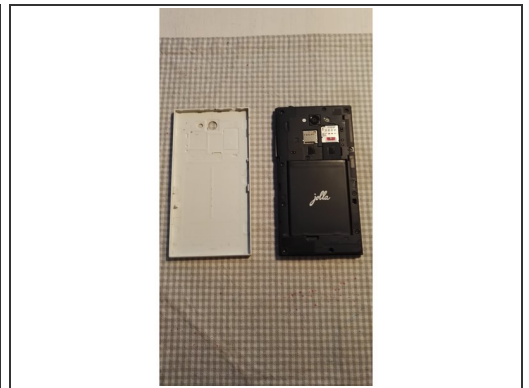
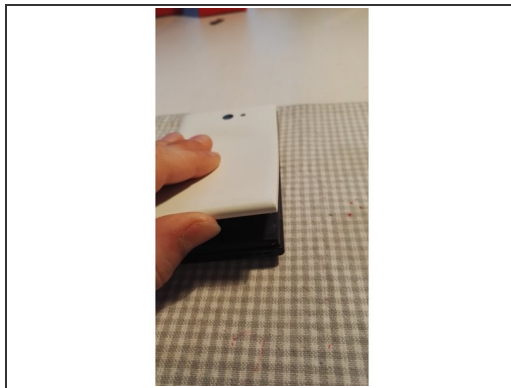
- [T5 Torx Screwdriver](#) (1)
  - [Spudger](#) (1)
-

## Step 1 — Jolla



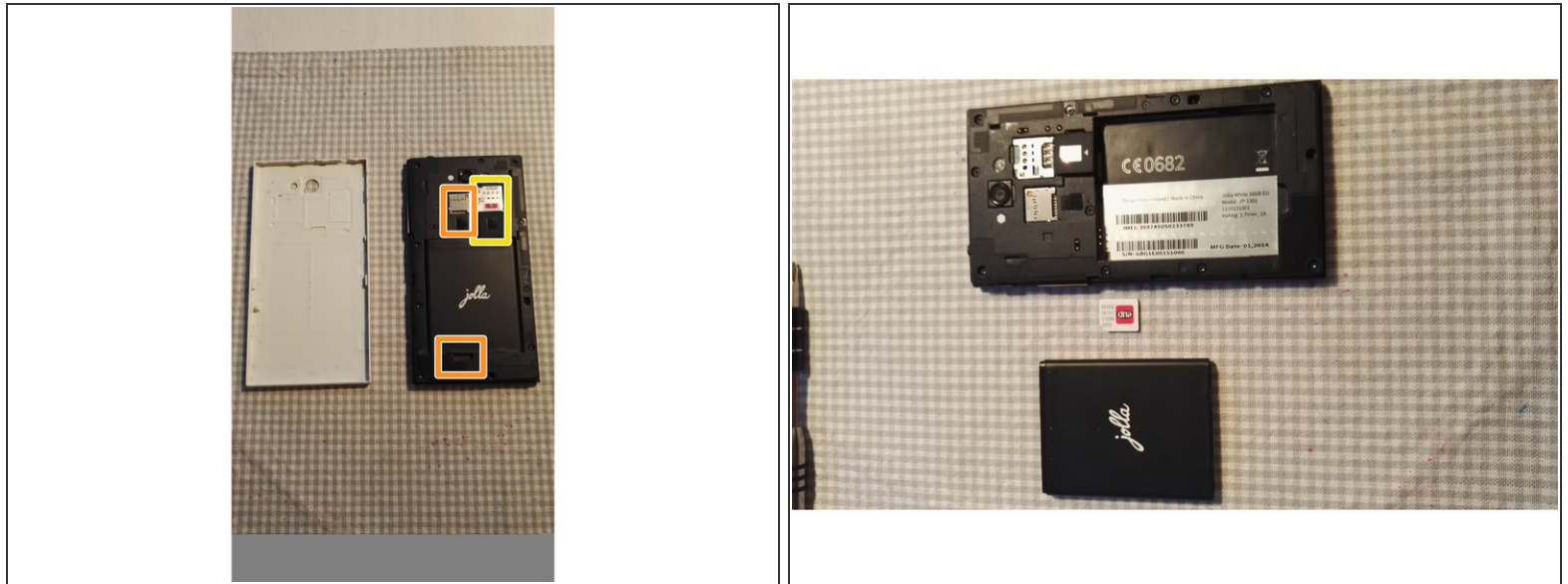
- Turn it off!

## Step 2 — Back cover



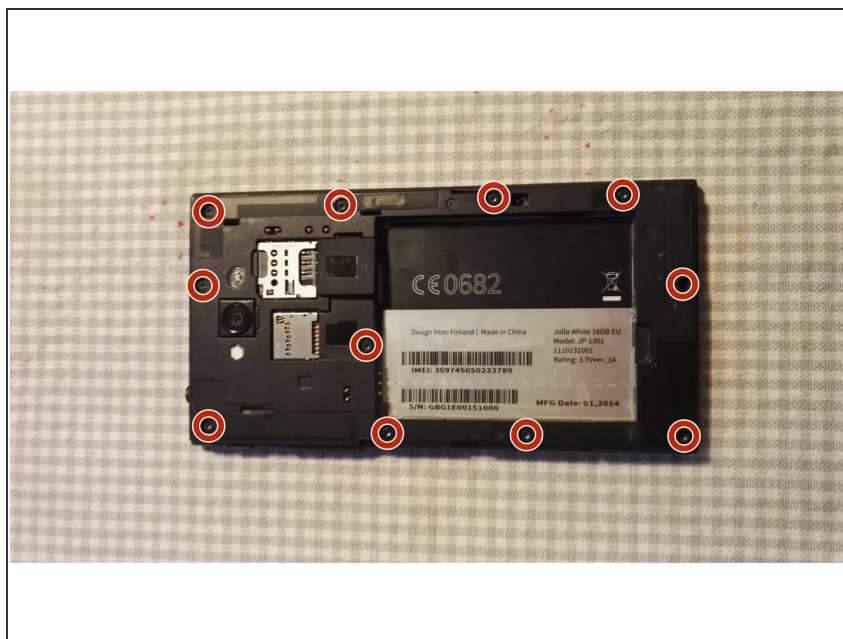
- Remove the back cover by pulling up from the bottom right hand corner. Remove the bottom first and then the sides.

## Step 3 — Battery, sim card and MicroSD Card



- Remove battery from the small space near the bottom of the phone.
- Remove the sim card by pulling the plastic flap to the right and pulling/pushing the sim card downwards.
- Remove the MicroSD card by pushing up from the bottom until it clicks. It will then ping down.

## Step 4



- Remove 11 T5 screws.

## Step 5 — Remove the back frame



- Pull up from the bottom corners, remove the bottom first and then the sides.
- The volume and power buttons may fall out at this point. Don't lose them.

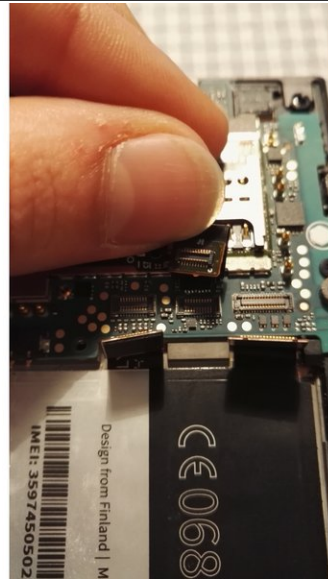
## Step 6 — Inner frame.



- Remove this T5 screw from the bottom left hand side. This is the only screw holding in the inner frame.
- The frame should lift out and up from the phone.
- ⓘ If your volume button and power button haven't fallen out yet, they will now.

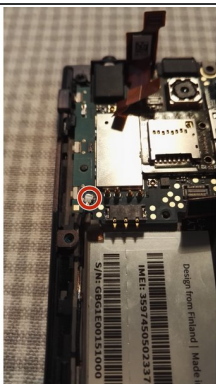


## Step 7 — Connectors



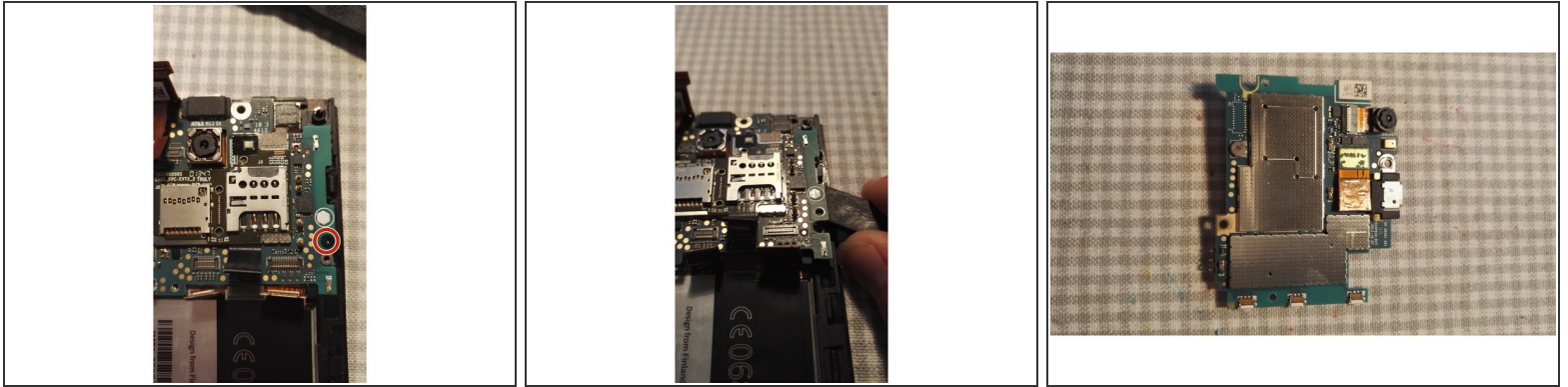
- Two connectors on the top right hand side.
- 3 connectors on the right hand side about half way down the phone.

## Step 8 — Antenna



- Remove one end from here.
- The other end can be removed here.

## Step 9 — Circuit board



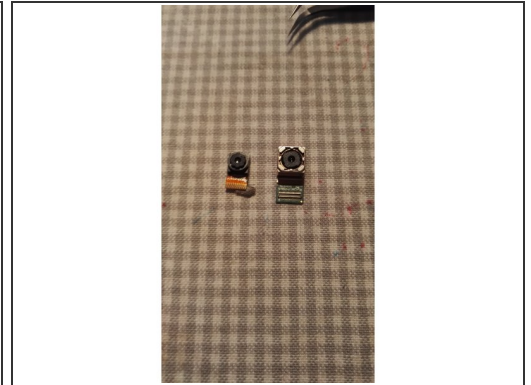
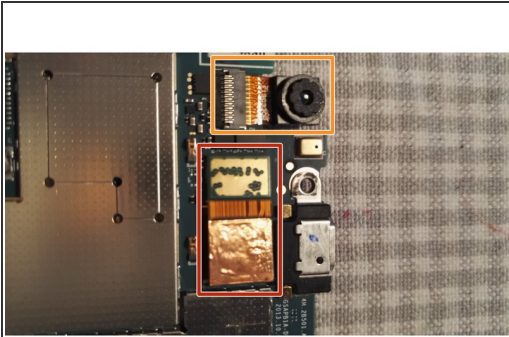
- The circuit board is held in place by one T5 screw.
- Use a spudger to gently pry the circuit board upwards. Do this on both sides.
- It should lift out quite easily.

## Step 10 — Small circuit board



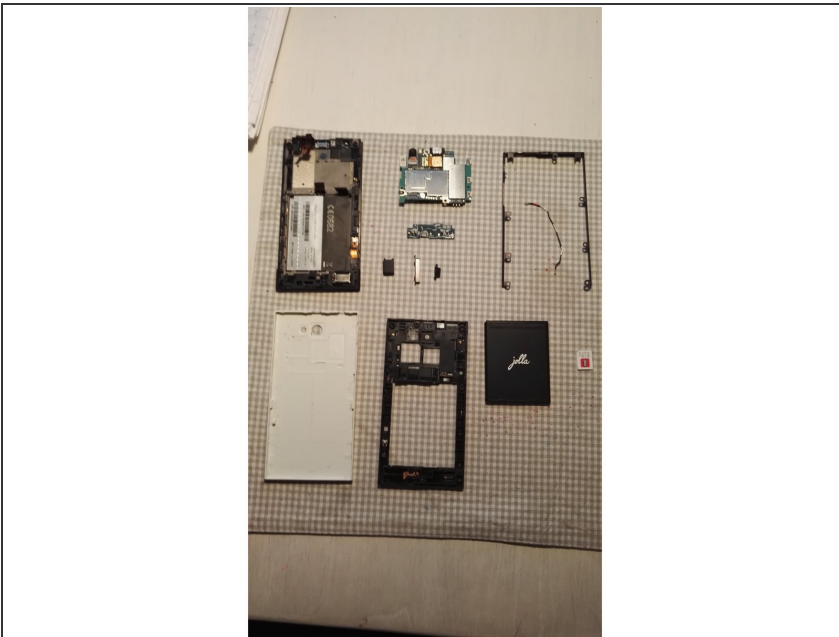
- The second circuit board can be removed after removing the connector attached to it and gently prying it off. It's fixed in place by a small amount of glue.

## Step 11 — Cameras



- Main camera.
- Secondary camera.

## Step 12 — Done!



- I won't be removing the screen in this teardown as replacement screens for the Jolla phone are not very easily available at the moment.