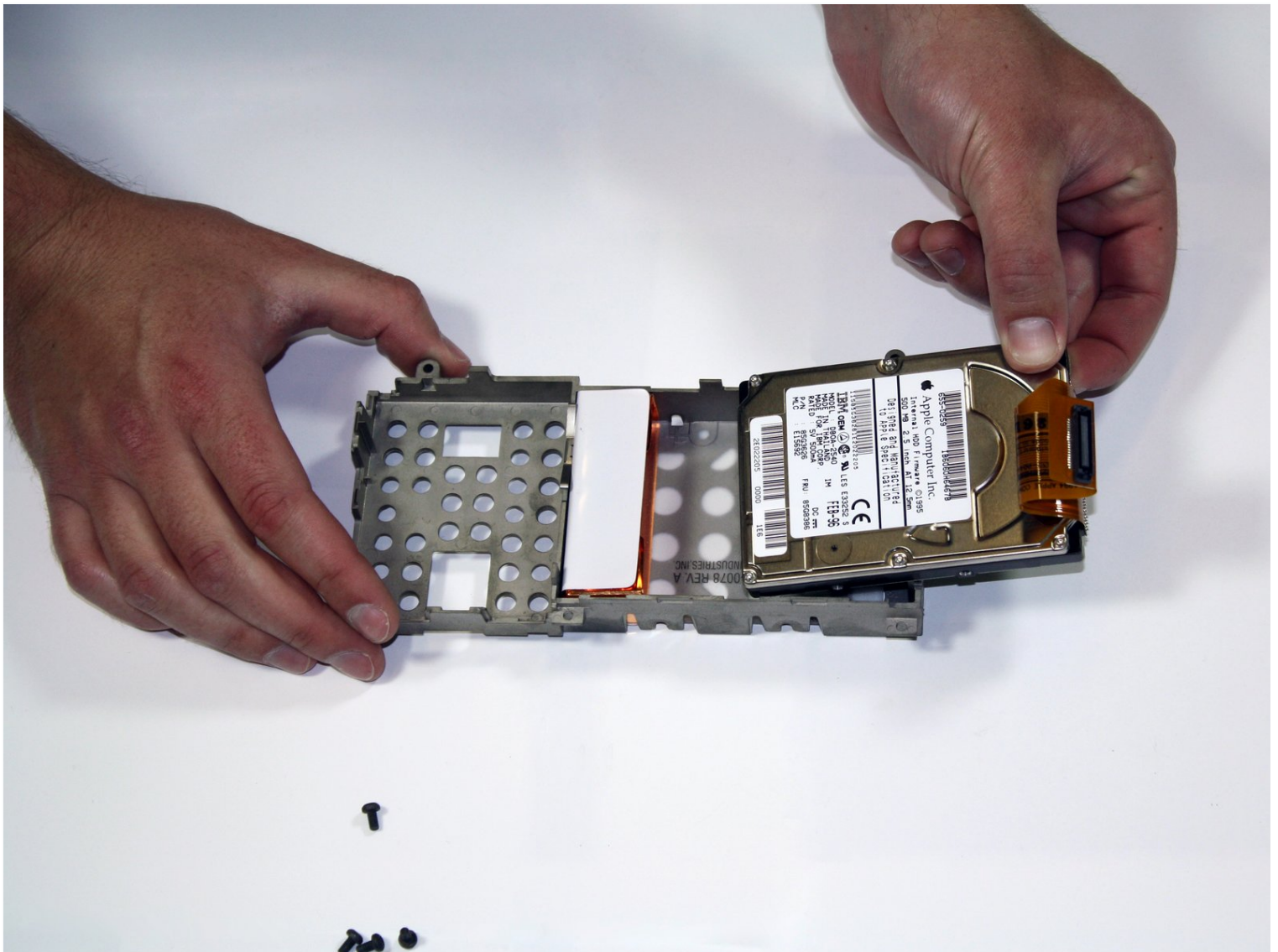




Apple Powerbook 5300 Hard Drive Replacement

This set of instructions covers the Apple...

Written By: Scott



INTRODUCTION

This set of instructions covers the Apple Powerbook 190/5300 Series' hard drive removal and replacement.. This procedure should be performed for the replacement of a faulty or inoperable hard drive; including but not limited to data cable damage, or power cable damage. The user may also want to remove their hard drive to secure their data from compromise.

This device contains the highest voltage of any Powerbook of its time, and requires precaution. Remove the battery and power adaptor before the procedure.


TOOLS:

[Tornevis Torx Security TR8](#) (1)

Step 1 — Battery



- Position the Powerbook towards you with the monitor closed.
- Press the battery removal latch located on the right side of the front panel.
- Gently slide the battery out.

 **The keyboard, front pane, and hard drive are connected to the laptop's logic board via a ribbon cable. Lift up slowly on each component with one hand and disconnect the ribbons from their ports on the logic board.**

Step 2 — Keyboard



- Turn the laptop over and remove the three T8 torx screws from the bottom panel.

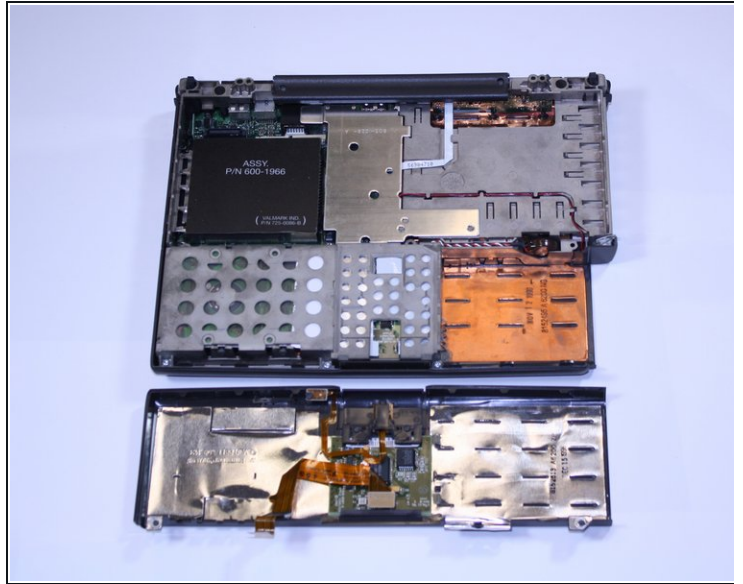
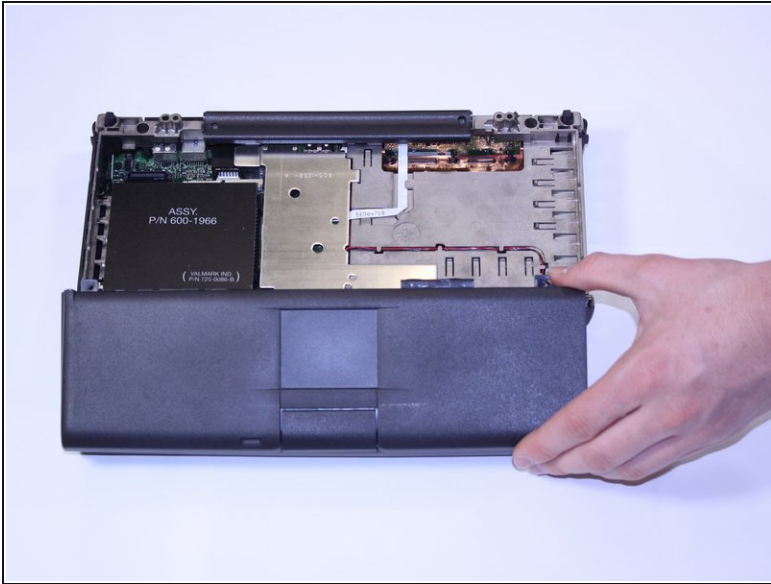
Step 3



- Turn the laptop back over and open the monitor.
- With the monitor facing towards you, gently pull up on the keyboard panel from the bottom.

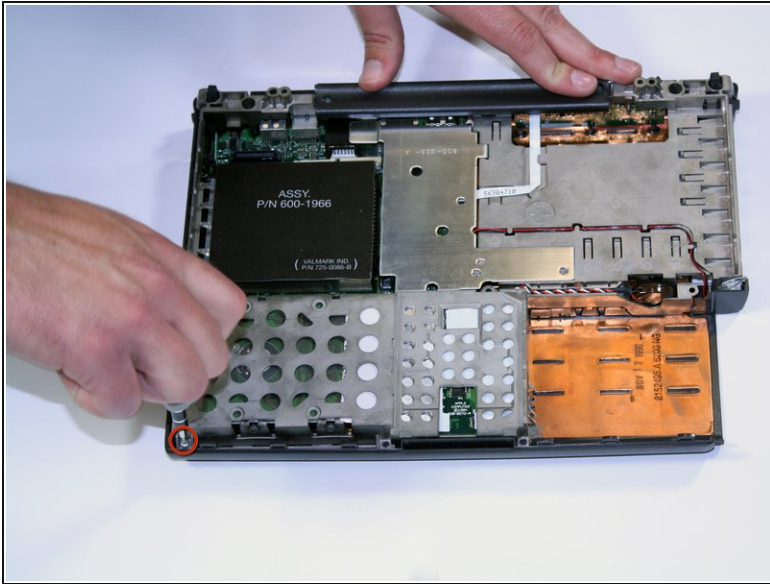
⚠ With the keyboard turned over as pictured, carefully remove its ribbon cable from the connection port on the logic board. Use a spudger to lift the white plastic retainer about 1/16" to release the cable.

Step 4 — Hard Drive



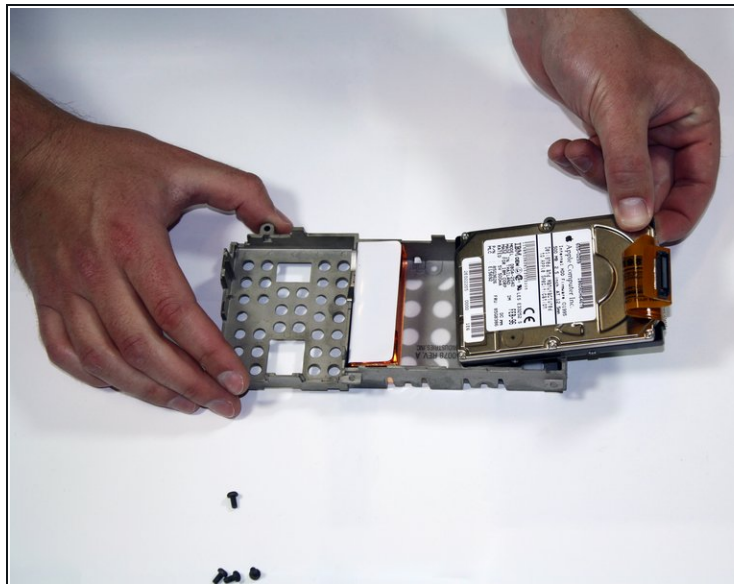
- Gently lift up the laptop's front-most panel and slowly raise the trackpad from the logic board.
- Disconnect the front panel's ribbon cable from the board by slowly pulling it out of the connection port. Set the panel aside.

Step 5



- Unscrew the Torx #8 screws holding the hard drive case in place on the logic board.
- Lift up on the hard drive to disconnect its ribbon cable from the logic board, just like in the previous steps.

Step 6



- Unscrew the four Torx #8 screws holding the hard drive to its case.

⚠ The hard drive can now be removed from its encasement.

To reassemble your device, follow these instructions in reverse order.