



ASUS ZenPad S8 Teardown

ASUS ZenPad S8 is world first tablet which has independent high-end TV level video display processor inside. Let's find out where the processor is.

Written By: Ken



INTRODUCTION

ASUS ZenPad S8 is world first tablet which has independent high-end TV level video display processor inside. Let's find out where the processor is.


Step 1 — ASUS ZenPad S8 Teardown



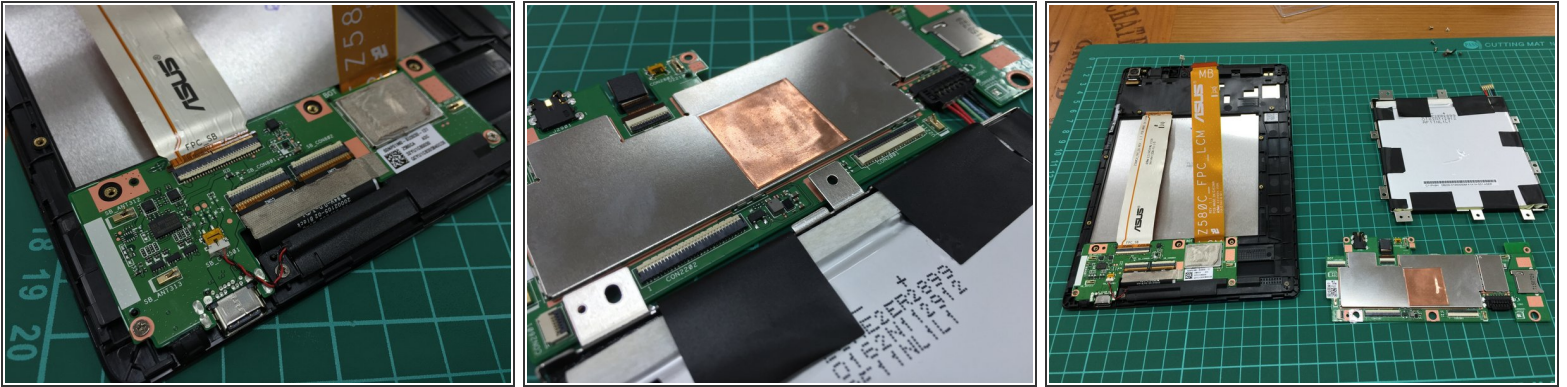
 ASUS ZenPad S8 outside

Step 2



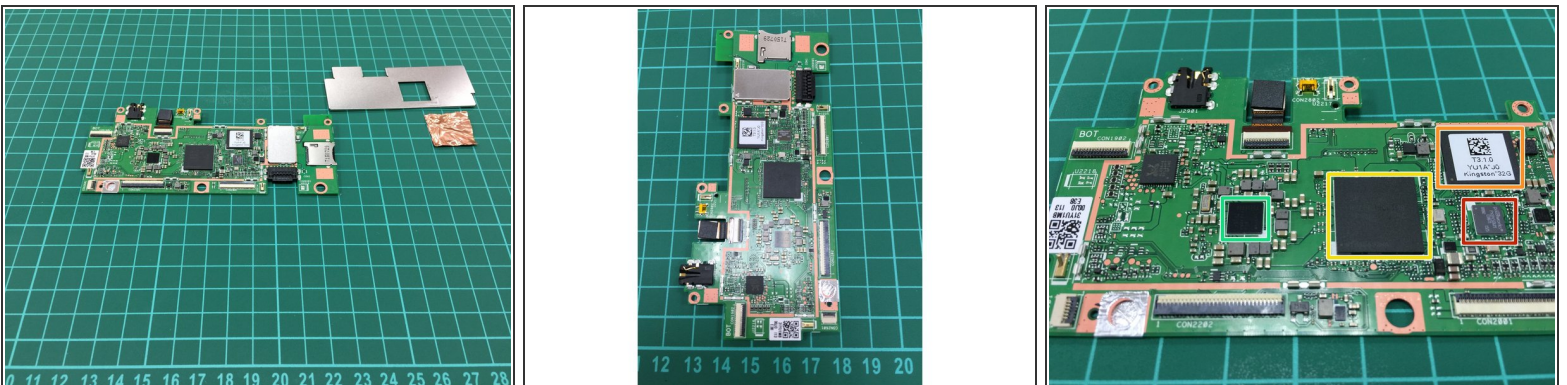
 The back case didn't use any screw or glue. The back case only use tenons to stick with front case. It's not hard to take apart.

Step 3



- i** There are three big parts in tablet-- upside circuit board, battery and downside circuit board. Base on my experience, upside circuit board has more important IC chips than downside board.

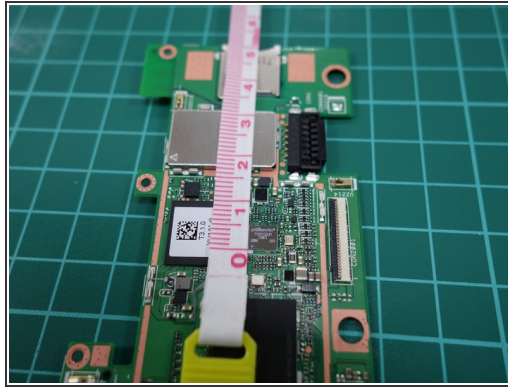
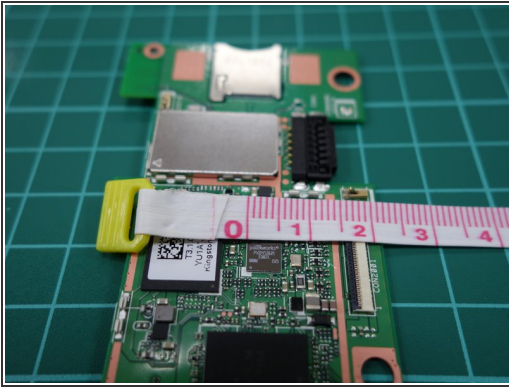
Step 4



- i** Let's closer look at the upside circuit board. We found 4 important IC chips.

- Hynix 4GB LPDDR3 DRAM.
- Intel Atom Z3580.
- Kingston eMMC 32GB NAND Flash
- Pixelworks PX8458WM. This is the independent high-end TV level video processor I'm looking for!!!

Step 5



- i** Let's measure the size of Pixelworks IC. It's about 5mm x 5mm (0.2inch x 0.2 inch)
- i** From Pixelworks CEO comment, we know ASUS ZenPad S8 use IRIS1 chip. Although IRIS1 chip also target on smartphone market, we didn't find any smartphone use IRIS1 chip yet.
- i** When I ask ASUS tablet PM about the possibility of IRIS1 on smartphone, he imply the power consumption level of IRIS1 may not reach smartphone requirement. It will be more reasonable to see IRIS1 on tablet or laptop.

To reassemble your device, follow these instructions in reverse order.