



Nintendo Wii U Pro Controller D-Pad Replacement

We pick up where we left off after removing the...

Written By: Jesse Burton



INTRODUCTION

We pick up where we left off after removing the joysticks. To reach the D-Pad, we will first remove the motherboard.



TOOLS:

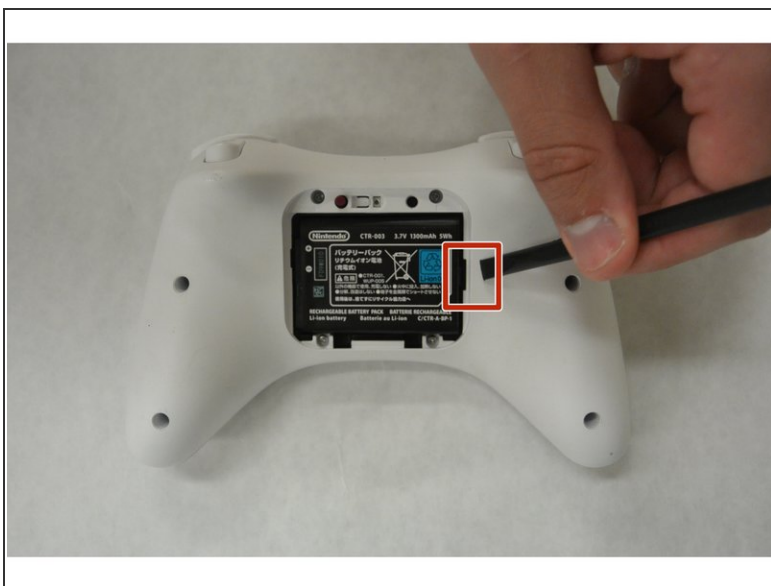
- [Spudger](#) (1)
 - [Tri-point Y0 Screwdriver](#) (1)
 - [64 Bit Driver Kit](#) (1)
-

Step 1 — Battery



- Turn the controller over to reveal the battery cover.
- Use the J000 screwdriver to remove the screw that secures the battery cover.

Step 2



- Remove the battery from the controller by inserting the plastic spudger into the small gap on the bottom right of the battery.
- Use the spudger as a lever to pry up and remove the battery from the compartment.

Step 3 — Joystick



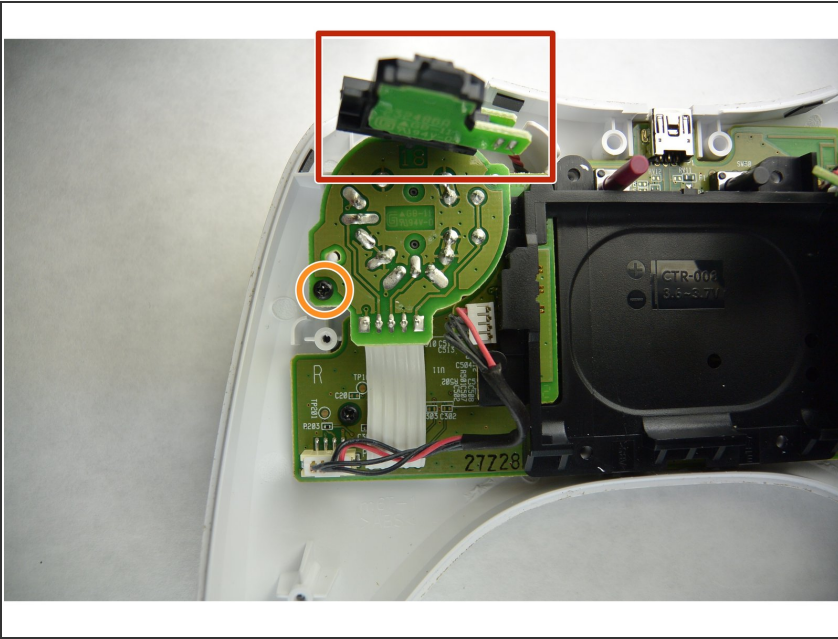
- Remove the eight 5.5 mm Y0 screws.

Step 4



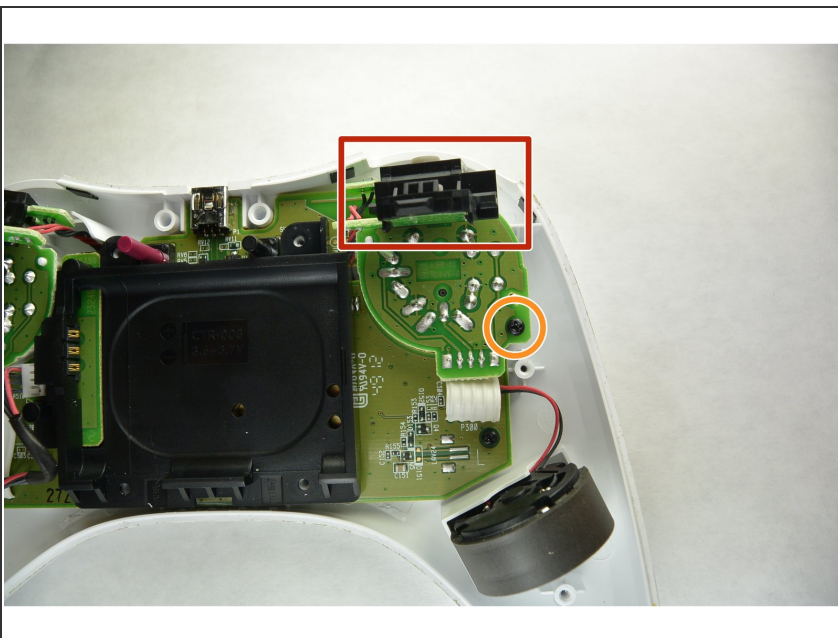
- Now that you have removed all of the screws, *carefully* separate and remove the bottom half of the controller shell from the top half.
- If you feel any resistance when pulling the shells apart, use a spudger to separate the left and right trigger contact assemblies from the bottom shell.

Step 5



- Move the right trigger and sensor out of the way.
- Remove the 4 mm JIS #0 screw.

Step 6



- Move the left trigger and sensor out of the way.
- Remove the 4 mm JIS #0 screw.

Step 7



- Remove the joysticks and motherboard from the controller's shell.

Step 8



- Carefully pull the rubber thumbsticks off of the electronic bearings to remove the joysticks.

Step 9 — D-Pad



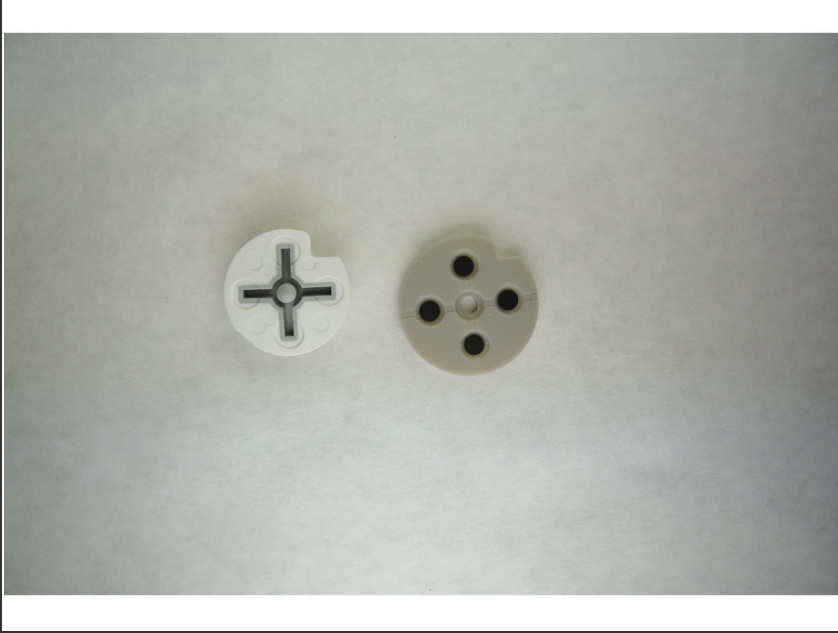
- Locate the two 4 mm motherboard screws, shown circled in red, with the J0 screwdriver.

Step 10



- Remove the motherboard and connected components. The rubber pad of the D-Pad is indicated in the image by the red arrow.

Step 11



- Remove the rubber pad and D-Pad button. The D-Pad can be replaced by the new D-Pad or be cleaned to improve condition.

To reassemble your device, follow these instructions in reverse order.