



Nikon Coolpix S3500 Battery and memory card door Replacement

In this guide, we will show you, step-by-step, how to install a new battery and memory card door.

Written By: Jordan Rosemeyer

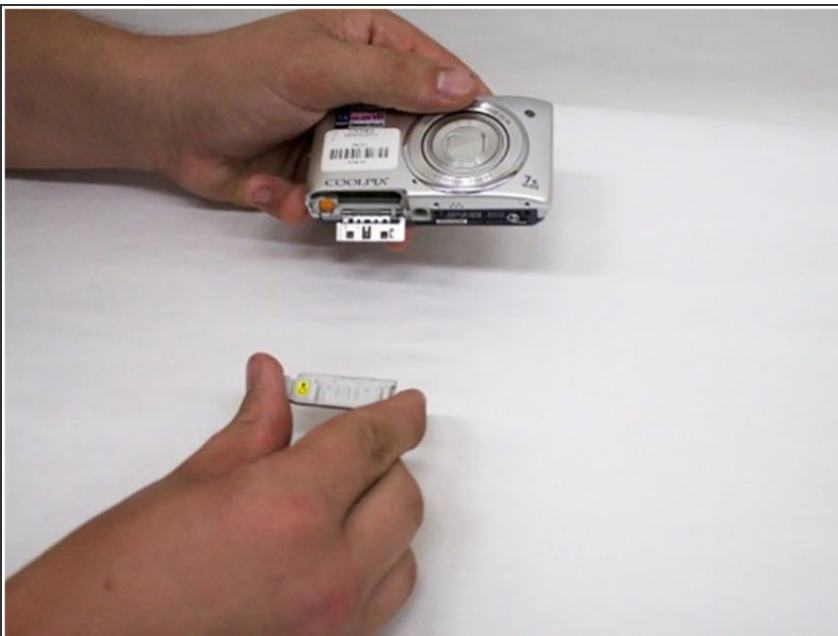


Step 1 — Battery and memory card door



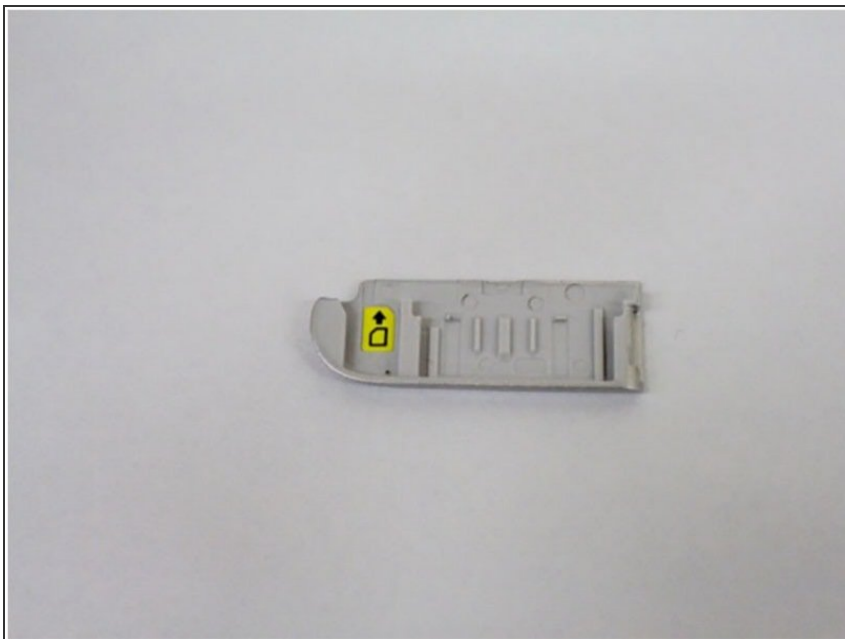
- Take the device in your hand, and hold it with the shutter side of the device facing upward.

Step 2



- With the shutter still facing up, make sure the battery door is facing your opposite hand.
- Using your free hand, pick up your new battery door.

Step 3



- Make sure that the new battery door is groove side up so that the door will slide onto the metal bracket on the device.

Step 4



- Line up the grooves on the battery door with the metal bracket and press the door towards the device.
- ⓘ The battery door is held on by tabs. Make sure that the tabs click into place on the door.

To reassemble your device, follow these instructions in reverse order.