



Lenovo Tab 2 A8 Rear-Facing Camera Replacement

Rear-facing camera isn't working? This guide will show you how to switch it out with a new one.

Written By: Tim Gales



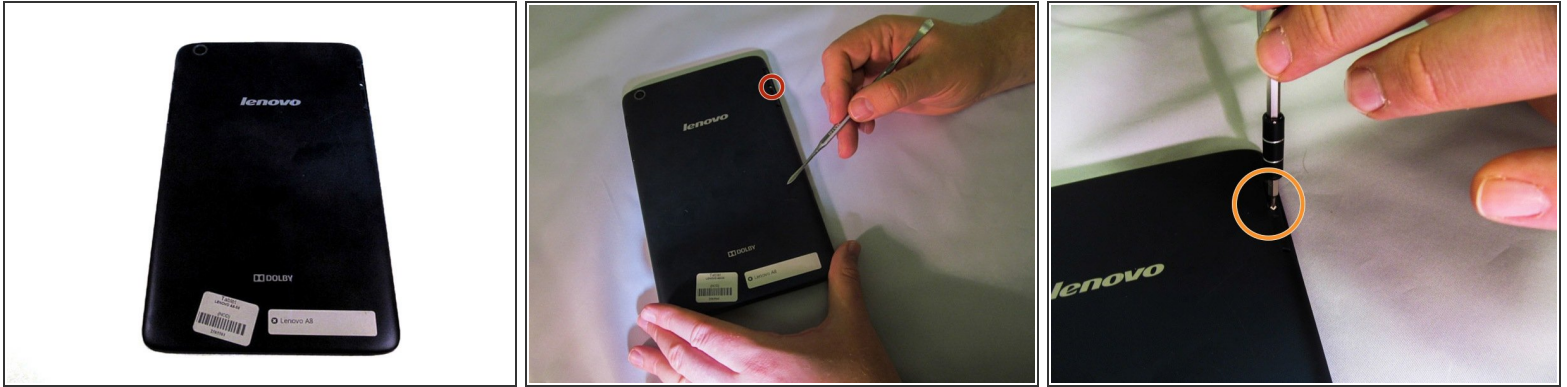
INTRODUCTION

This guide illustrates the procedure to remove the rear-facing camera of your device.

TOOLS:

- [Metal Spudger](#) (1)
 - [Phillips #000 Screwdriver](#) (1)
 - [Tweezers](#) (1)
-

Step 1 — Removing the Back Panel



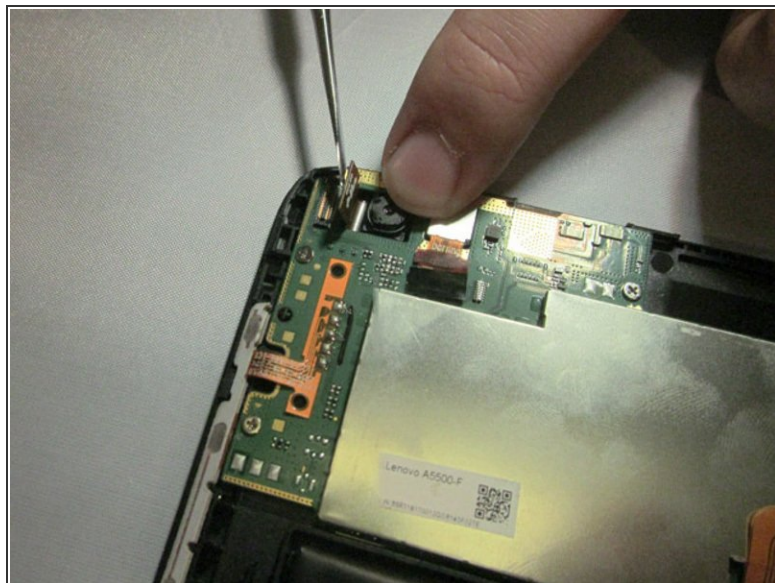
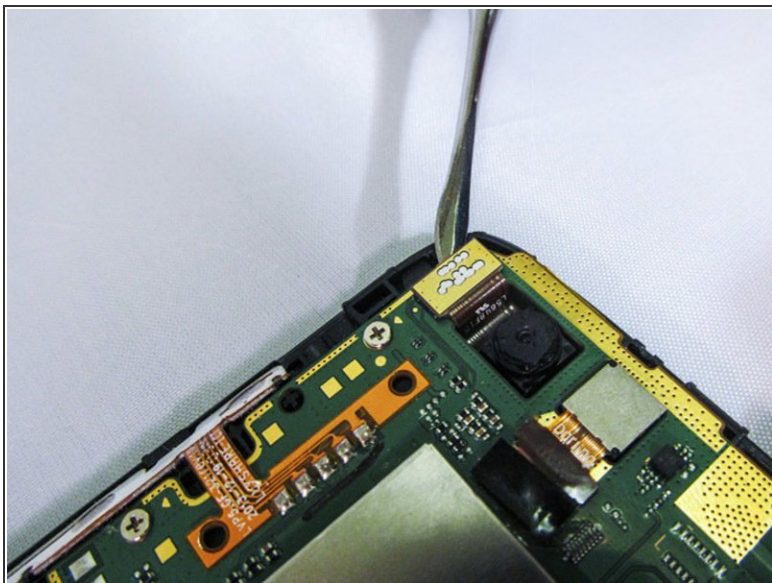
- Place the tablet face down on a soft, stable surface that will protect the screen.
 - Next, Scrape off the seal over the screw in the back of the tablet with a Metal Spudger.
 - Use the Phillips #000 Screwdriver to remove the M1.4 × 2.5 screw.
- ⓘ If the seal covering the screw has already been removed, please proceed to the next step in the process.
- ⓘ As the screw is small, you may wish to extract it using a pair of tweezers.

Step 2



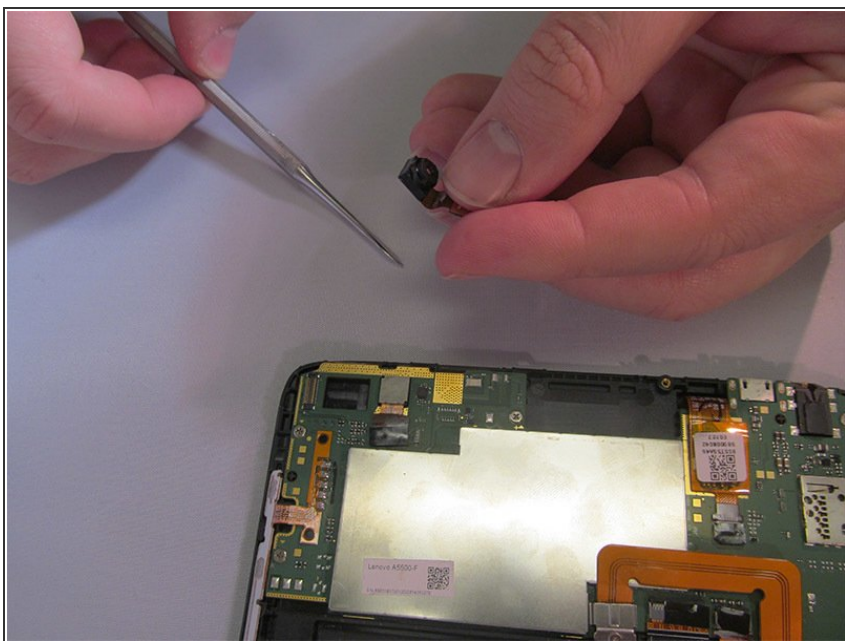
- Starting on the side, work your way around the the tablet to pop off the back cover. You will want to utilize a metal Spudger for this.
- ⓘ Some force may be required initially to pry the back cover off.
- ⓘ Note that the button tabs for this device are loose inside the case and will fall out when opening.

Step 3 — Rear-Facing Camera



- Using a spudger, pry upward on the camera connector to free it from the motherboard.

Step 4



- Use tweezers to grasp the camera connector and lift the camera out of its socket.

To reassemble your device, follow these instructions in reverse order.