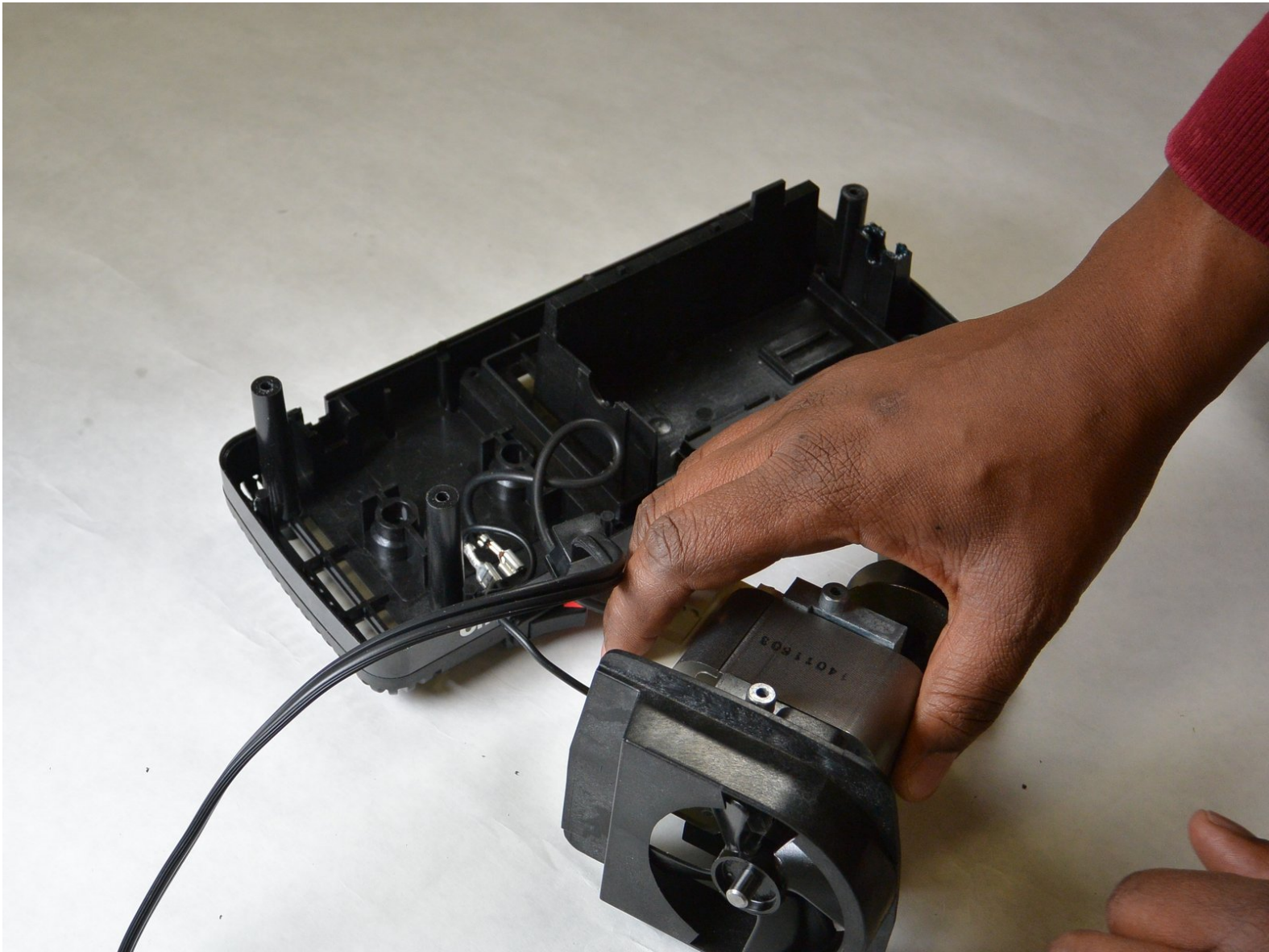




Chef's Choice M115 Power Cord Replacement

Power cords on appliances such as this can get...

Written By: Zachary Grounds



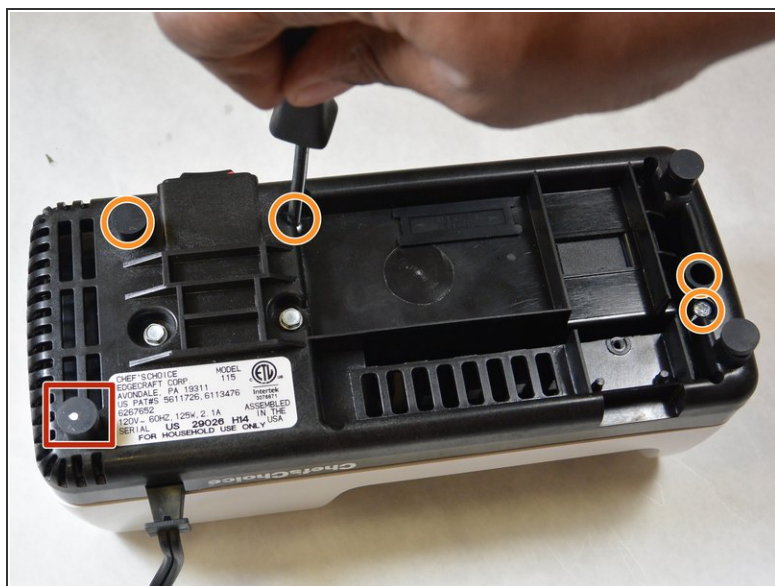
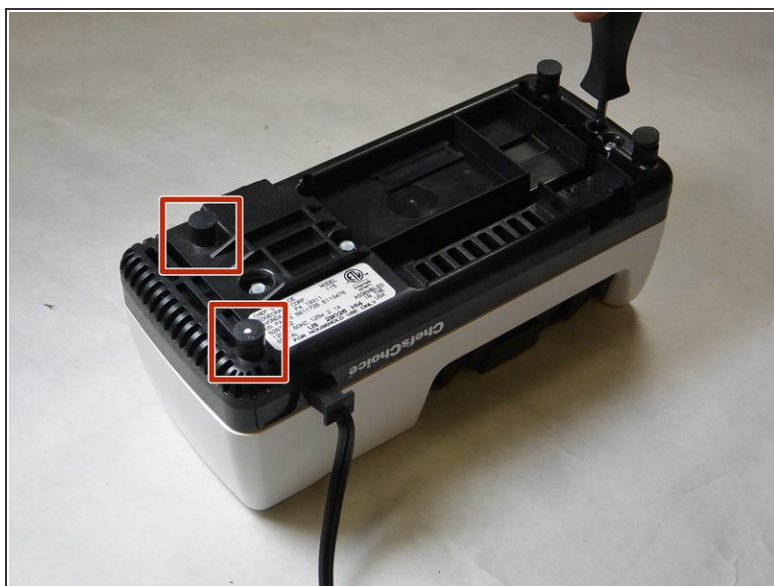
INTRODUCTION

Power cords on appliances such as this can get damaged easily. Instead of throwing it out, consider replacing the cord. As with any other electrical device, a damaged power cord can cause a fire or injury, so this guide can assist in reducing that risk.

TOOLS:

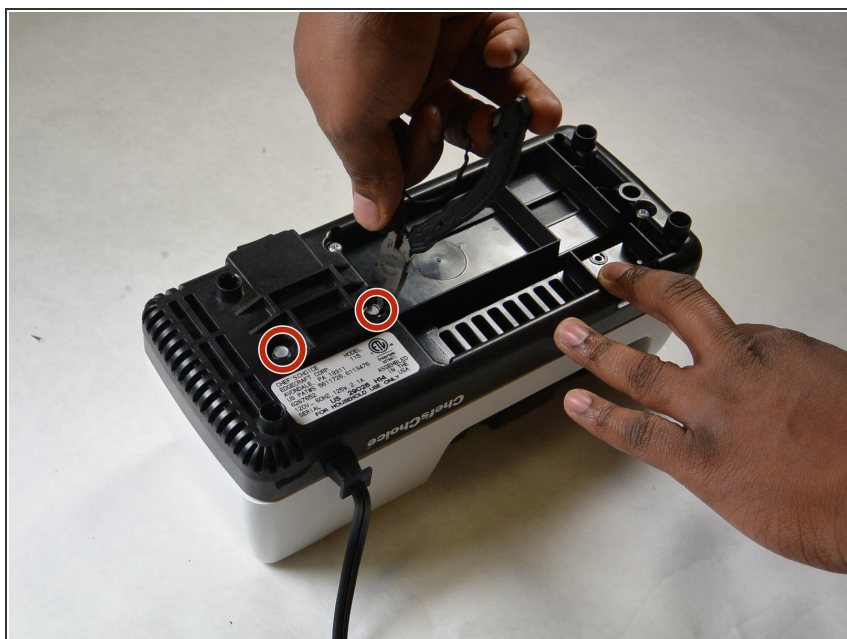
- [Slip Joint Pliers](#) (1)
 - [Phillips #2 Screwdriver](#) (1)
-

Step 1 — Case



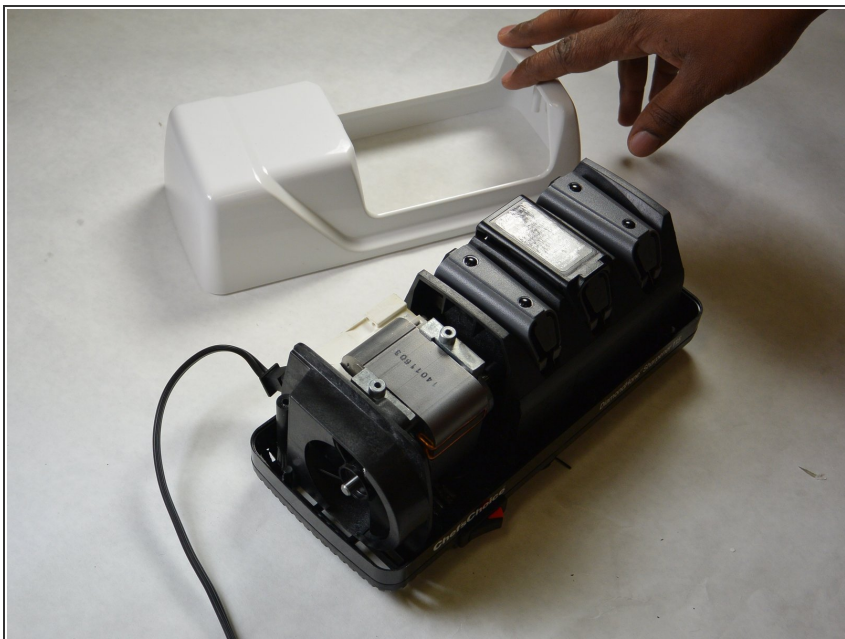
- Remove the two rubber feet on the motor side of the device.
- Remove the five Phillips screws from the bottom of the case.
- ⓘ These screws are recessed deep in the device, so a long, thin screwdriver is required.

Step 2



- Remove the two hex-cap screws on the bottom using a pair of pliers.

Step 3



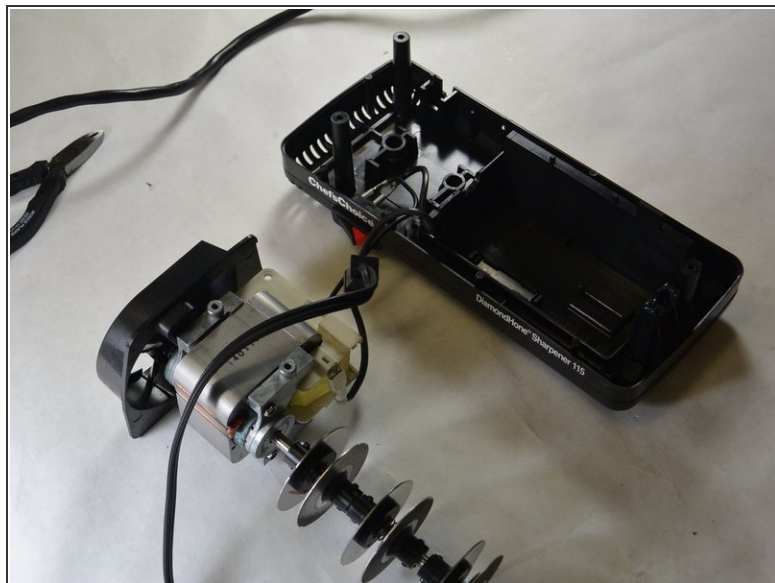
- Carefully flip the device right-side-up while grasping the top and bottom pieces.
- ⓘ The white cover should lift off with no resistance. If it does not, ensure all screws were removed in previous step.

Step 4



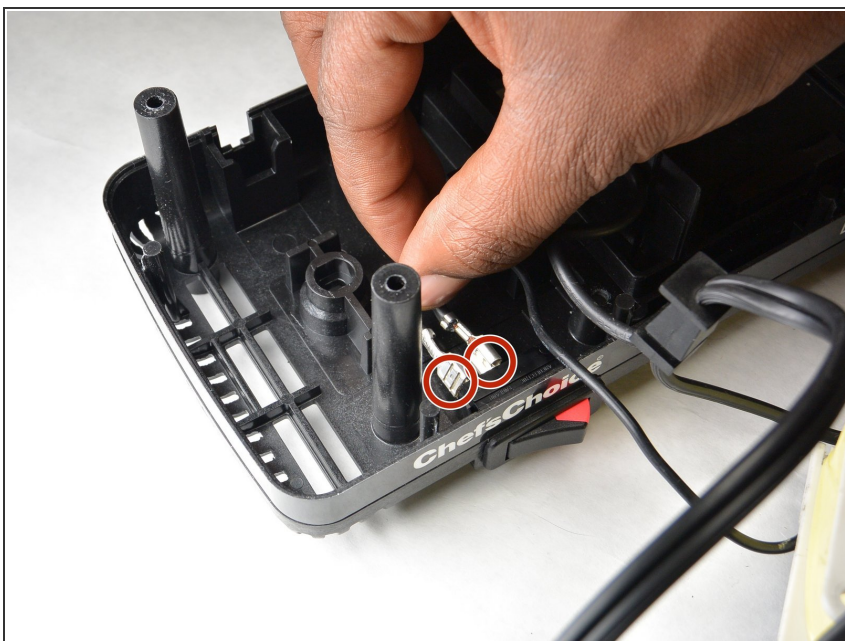
- Remove the sharpener guard by gently pulling up on it.
- ⓘ If the sharpener guard does not come off easily, ensure all screws were removed in step 1.

Step 5 — Power Cord



- Carefully lift the entire motor assembly out of the case.

Step 6



- Remove the spade connectors from the switch by pulling only on the connector, not the wire.
- ⓘ These should come off without tools, but will require a fair bit of force. Mark each wire with tape if you are unsure of the wiring layout of the device.

Step 7



- Disconnect the spade connector on the motor by pulling only on the connector, not the cord.

To reassemble your device, follow these instructions in reverse order. Take care to ensure the power connections are connected back to their original location.