



# iRobot Roomba 560 Top Panels Replacement

A guide to remove the silver and black panels of the Roomba 560.

Written By: Mairead Blaes



---

## INTRODUCTION

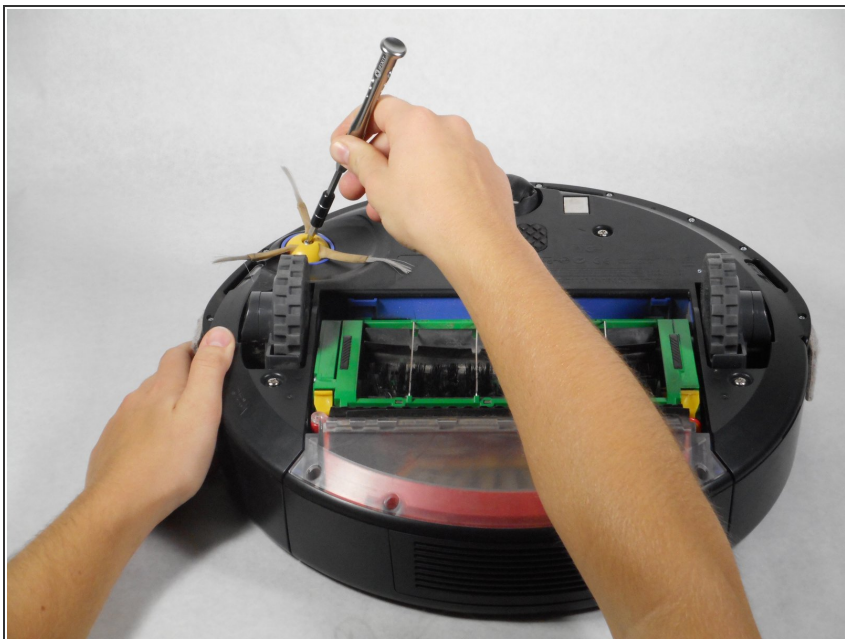
Use this "Prerequisite Only" guide for removing the top silver and black panels for other replacements in the Roomba 560.



### TOOLS:

- [JIS #1](#) (1)
  - [iFixit Opening Tool](#) (1)
-

## Step 1 — Side Sweeper



- Flip the Roomba upside down.
- Unscrew the single 5 mm screw on the yellow side sweeper using the Phillips #2 driver.

## Step 2



- Lift the yellow side sweeper, removing it from the device.

## Step 3 — Battery



- Using the Phillips #2 driver, remove the four 10 mm screws that hold the back panel in place.

## Step 4



- Lift up the back panel to remove it from the device.



## Step 5



- Lift up the yellow battery by pulling up the green tabs on its side.

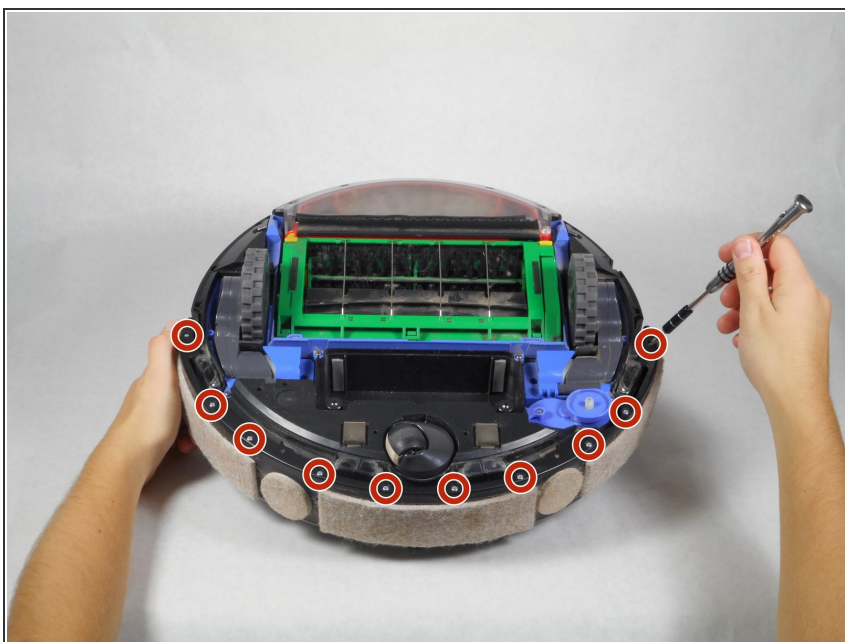
 Handle the battery with care.

## Step 6 — Clear Sensor Lens



- Rotate the Roomba so the bumper is in front of you.

## Step 7



- Using the Phillips #1 driver, remove the ten 10 mm screws on the bumper that run along the outer edge of the Roomba.

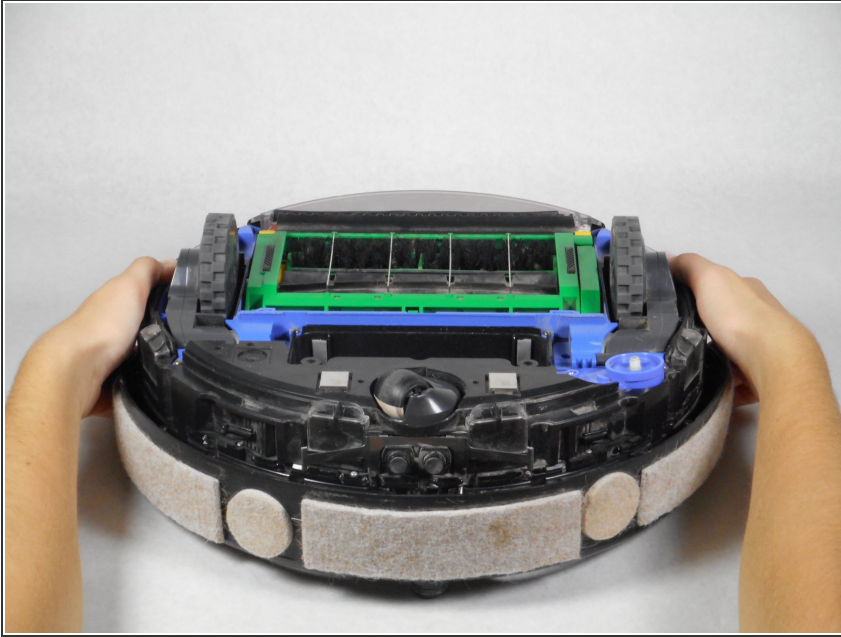
## Step 8



- Lift the thin top cover that holds the bumper in place.



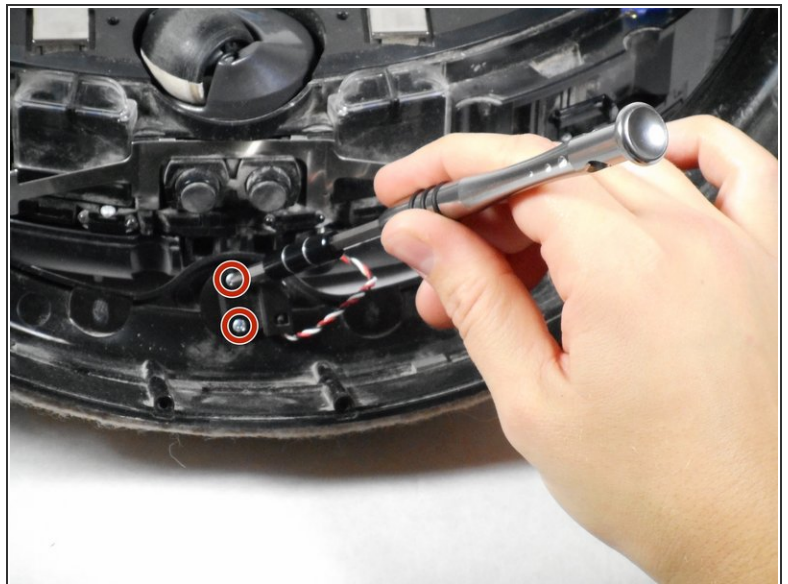
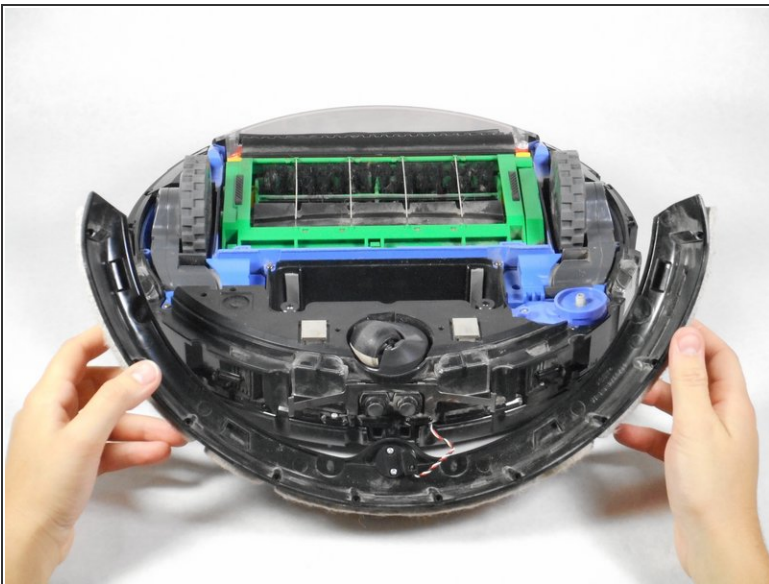
## Step 9



- Gently lift the device upwards from the bumper to detach these two pieces.

⚠ There are wires connecting the bumper to the device. Be careful while lifting the device off the bumper as to not damage these wires.

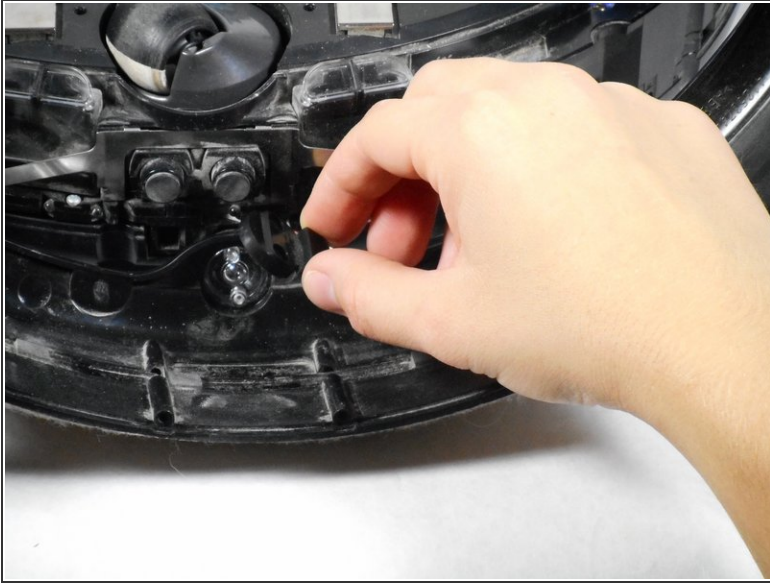
## Step 10



- Lift the bumper upwards for easier access.
  - Unscrew the two 5 mm screws that connect the red and white wires to the device using the Phillips #1 driver.
- ⓘ The sensor can be unplugged from the motherboard so the bumper isn't hanging off the Roomba.

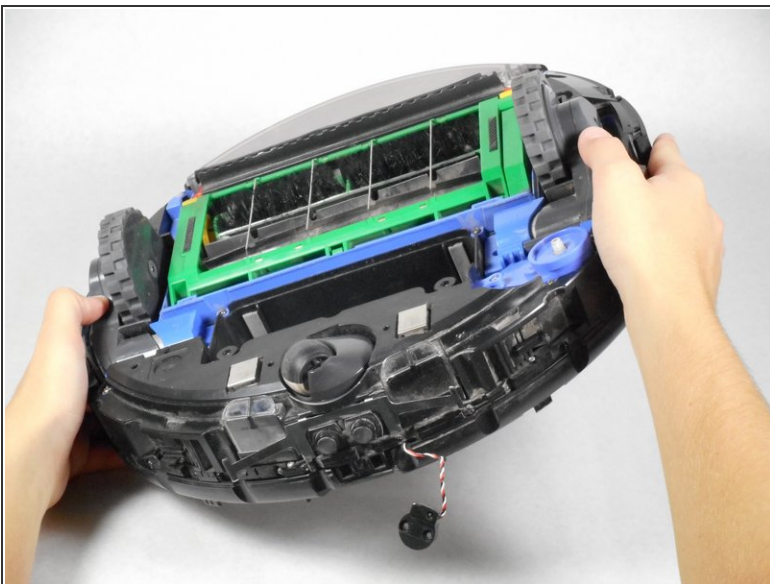
This document was generated on 2022-09-27 06:35:05 PM (MST).

## Step 11



- Lift the circular black panel off the lens.
- Lift the clear lens that is on the other side of the bumper and replace it with a new lens.

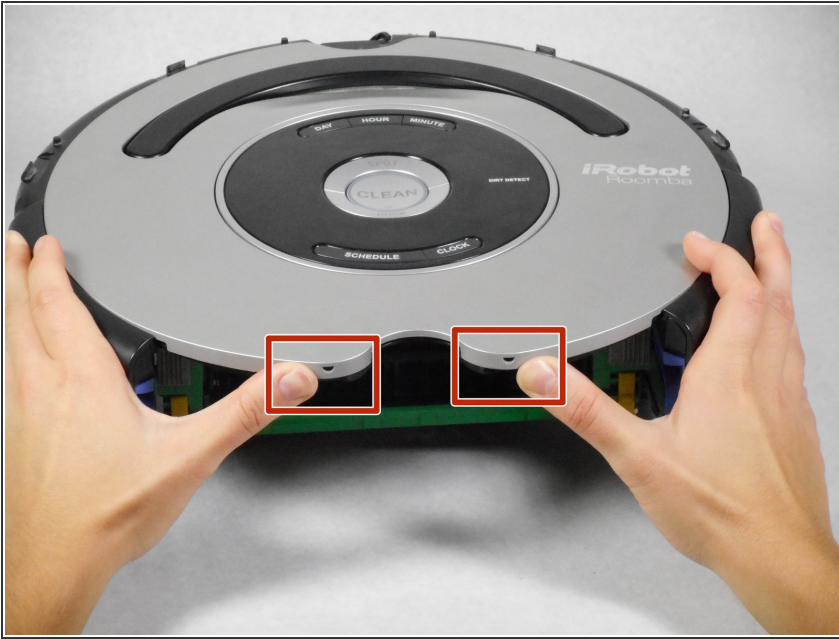
## Step 12 — Top Panels



- Turn the device over so that it is face up with the vacuum bin in front of you .
- Press the button of the vacuum bin and pull out the bin from the device.



## Step 13



- Use your hands to unhook the snaps between the silver panel from the black panel located where the vacuum bin was.

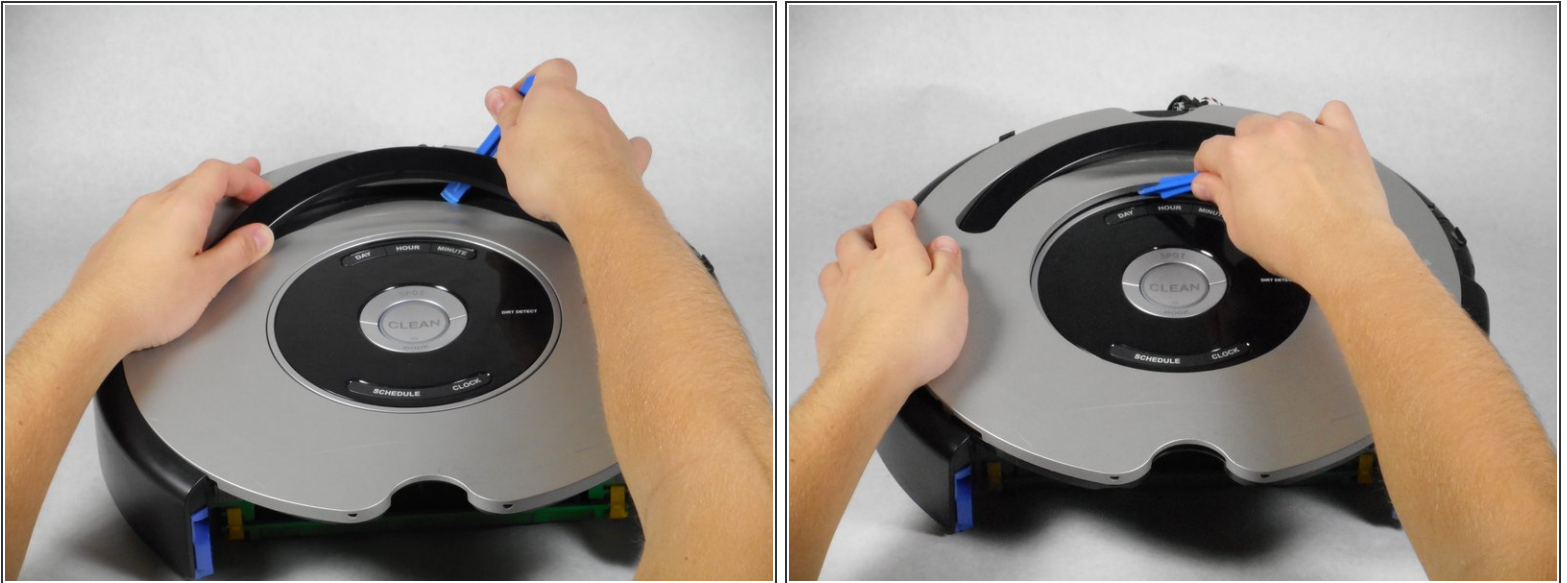
## Step 14



- Using the plastic opening tool, go around the outer edges of the silver panel and unhook the snaps holding it in place.

**⚠ When prying open the top panel from the inner casing, do so gently. Never "force" the top panel to snap off, or you could risk breaking pieces.**

## Step 15



- Lift the black handle and use the plastic opening tool to unhook the snaps underneath it.
- Use the same tool to pry the silver cover from the black central control board.

## Step 16



- Lift the silver panel off of the black panel.

## Step 17



- Use a Phillips #2 screwdriver to remove the following screws:
  - Two 7.5 mm-long screws at either end of the semicircular handle
  - Ten 5 mm-long screws
- Use a Phillips #1 screwdriver to remove the 5 mm-long screw at the bottom of the control board.

## Step 18



- Lift the black panel off the device.
  - ⓘ This will provide access to the motherboard and black circular control panel.

To reassemble your device, follow these instructions in reverse order.