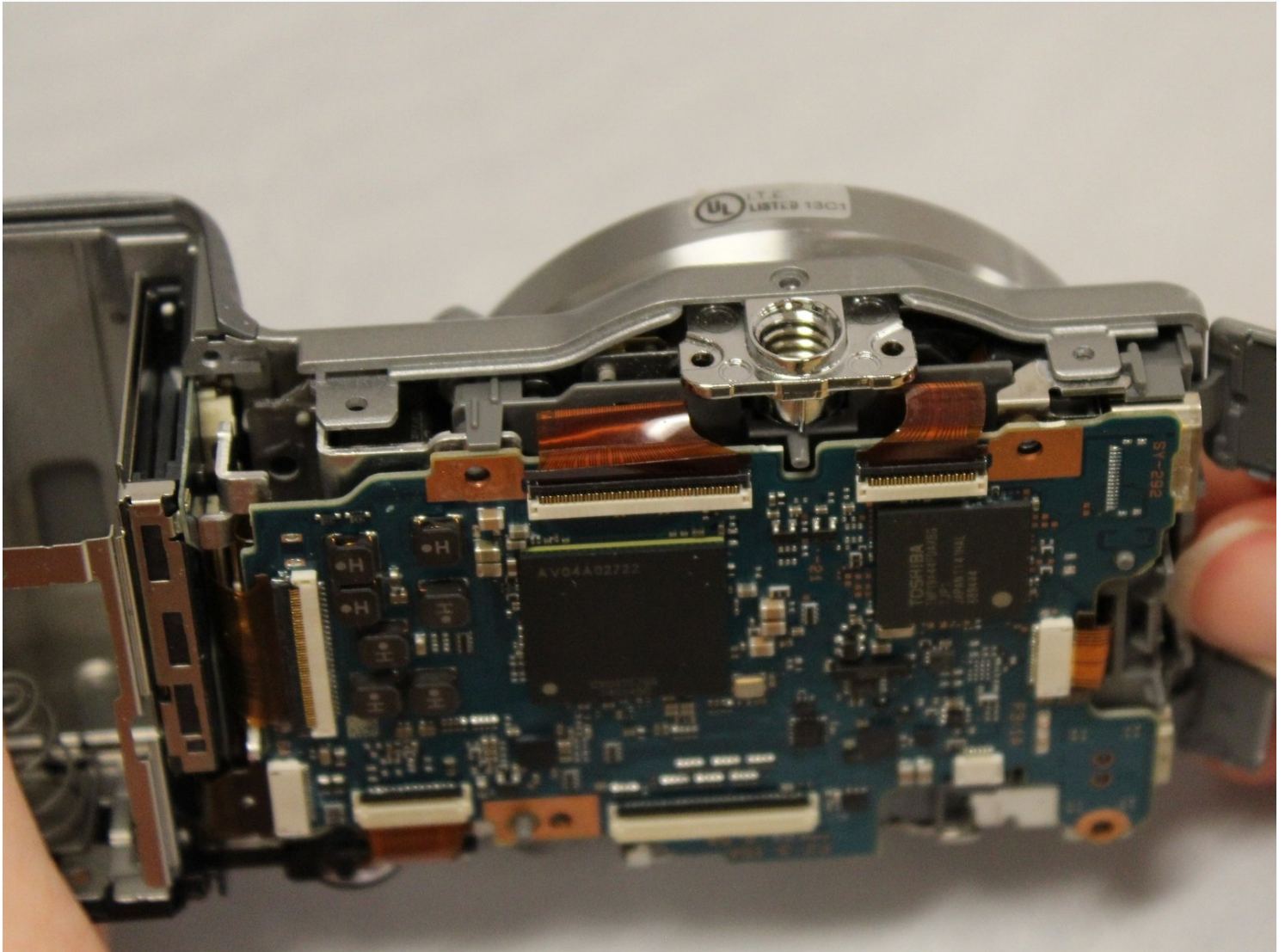




# Sony Alpha NEX-5N Motherboard Replacement

A guide to show the replacement procedure of...

Written By: Andrea Tobar



# INTRODUCTION

A guide to show the replacement procedure of the motherboard.

## TOOLS:

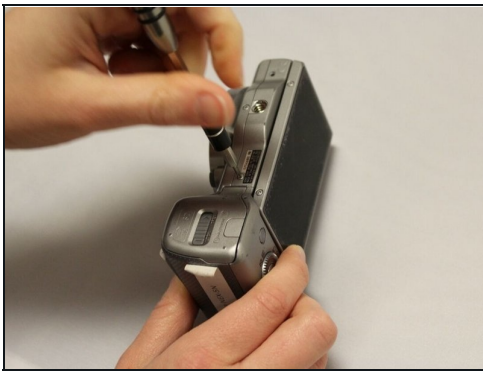
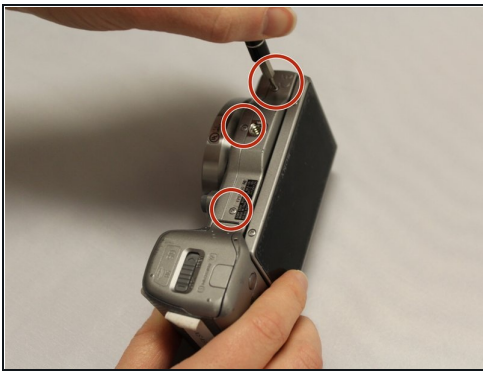
Phillips #0 Screwdriver (1)

Phillips #000 Screwdriver (1)

Tweezers (1)

iFixit Opening Tool (1)

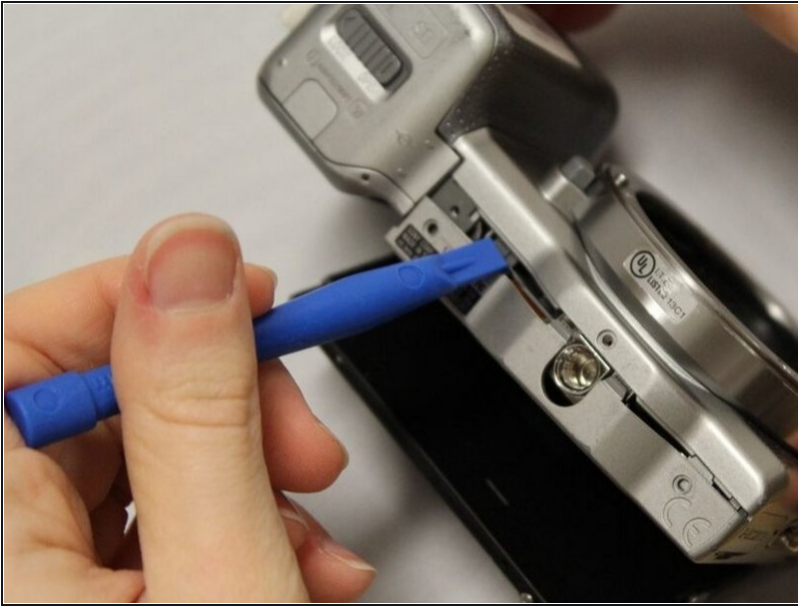
## Step 1 — Motherboard



- Unscrew the 3 silver 1.2 mm Phillips #000 screws from the bottom of the camera.

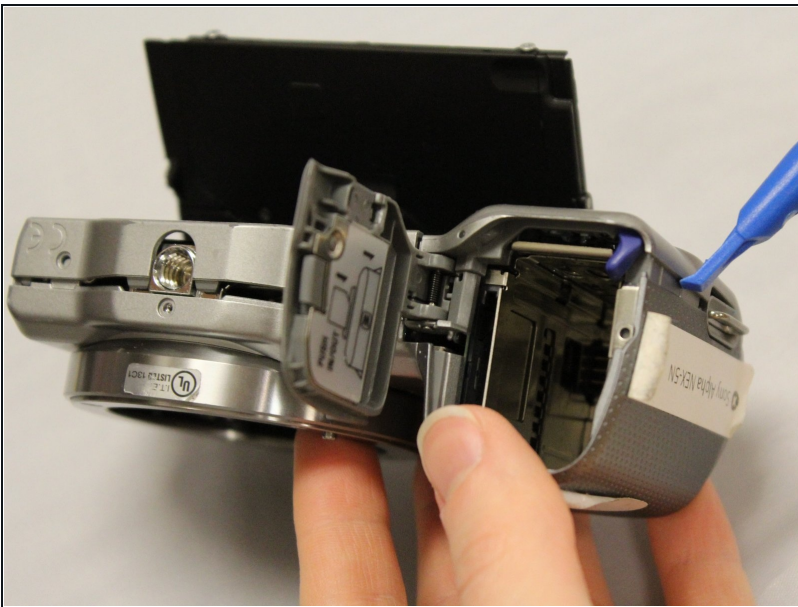
ⓘ This does not include the two screws in the bottom of the LCD screen panel.

## Step 2



- On the bottom casing, locate the split along the tripod port.
- Insert the prying tool into the split.
- Pull the prying tool towards the LCD screen to begin separating the split.
- ① Jiggling the prying tool may be necessary to open the split.

## Step 3



- Hold the device with the lens facing you, and grasp the battery compartment.
- Locate the split on the side of the battery compartment.
- Locate the split and insert the prying tool.
- Pull the prying tool towards the LCD screen to begin separating the split.
- ① Jiggling the prying tool may be necessary to open the split.

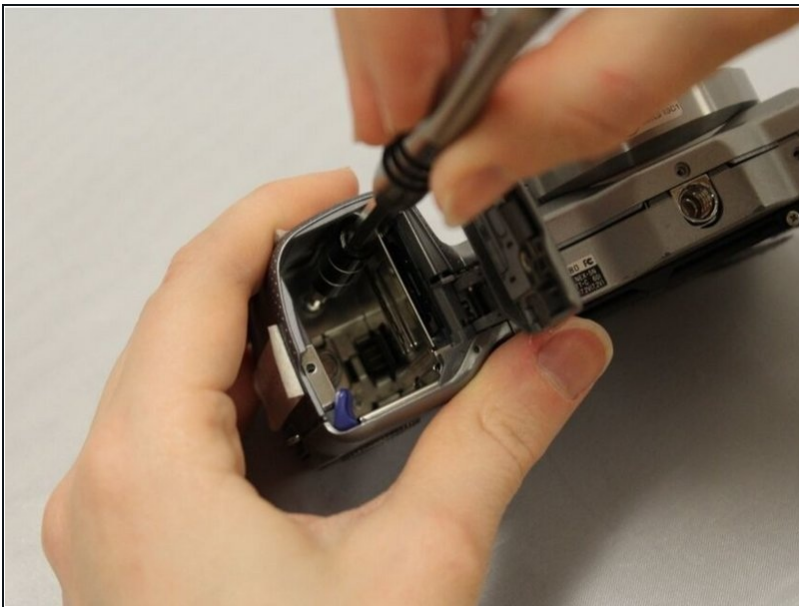


## Step 4



- Locate the charging port.
- Unscrew the silver 3.5 mm Phillips #0 screw next to the port.

## Step 5



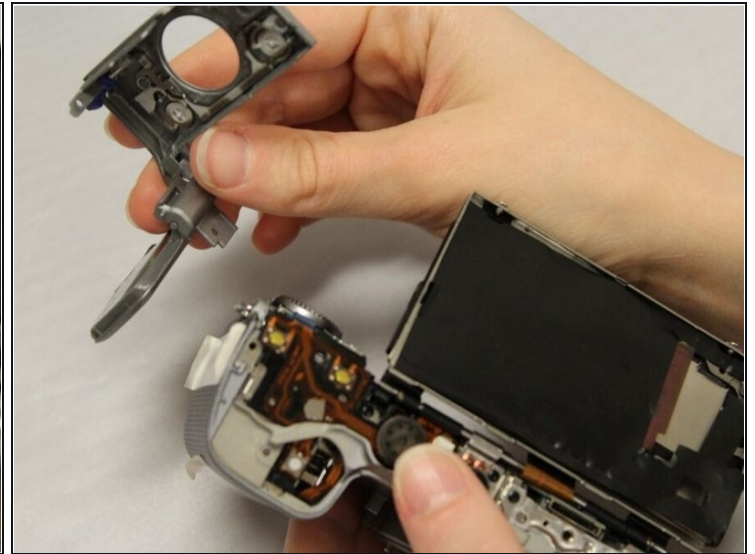
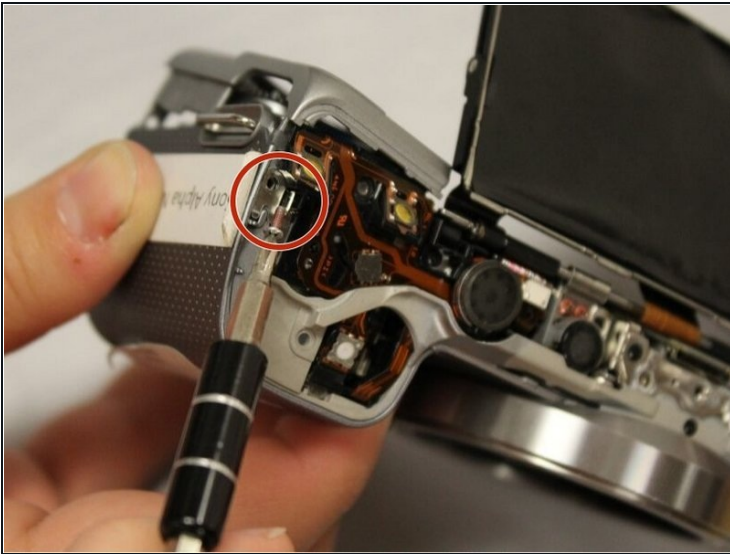
- Open the battery compartment.
- Unscrew the 2 silver 3.5 mm Phillips #0 screws found at the inside bottom of the battery port.

## Step 6



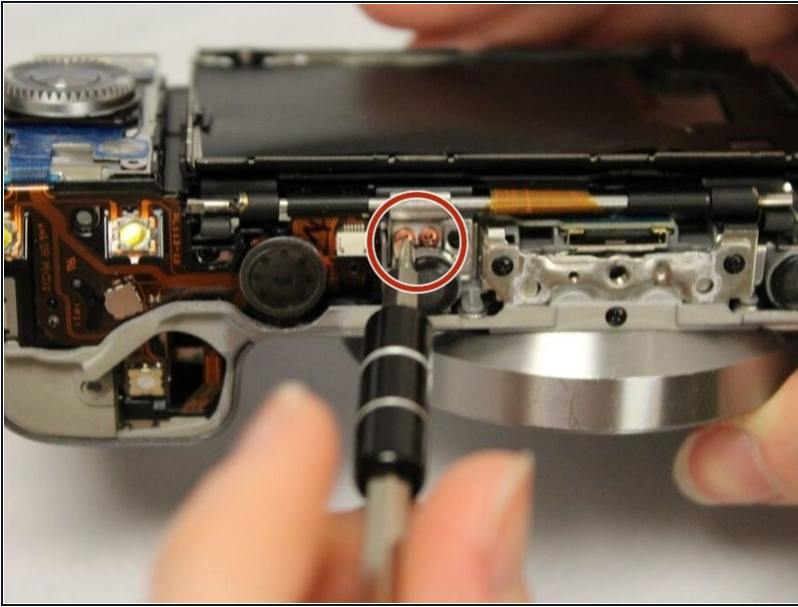
- Insert prying tool in the split between the top panel (where you find the movie button) and the LCD screen.
- Jiggle the prying tool and pull the tool away from the device.
- ① The panel will fall off immediately.

## Step 7



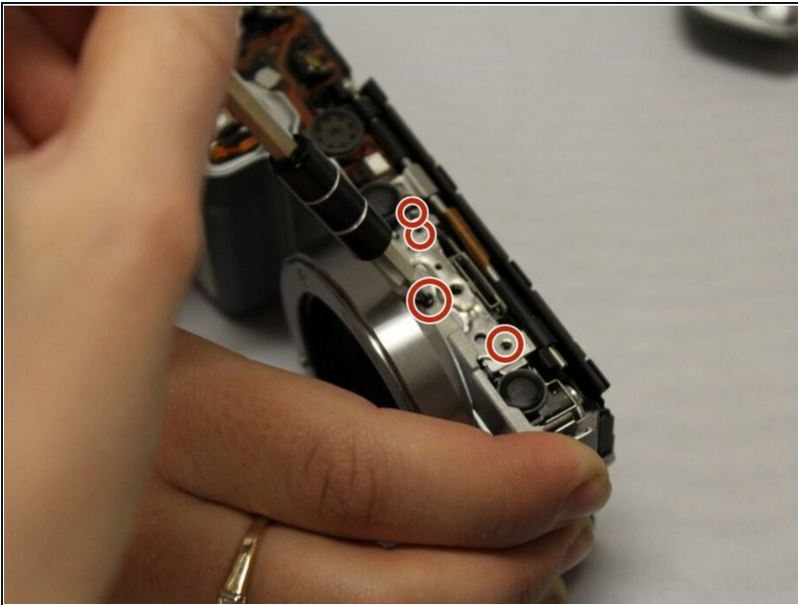
- Unscrew the silver 3.5 mm Phillips #0 screw, visible on the left top edge when looking at the face of the device.
- ① The dark gray panel that surrounds the shutter button and covers the battery compartment will be loose.

## Step 8



- Locate the middle top of the device.
- Unscrew 2 copper 1.2 mm Phillips #000 screws.

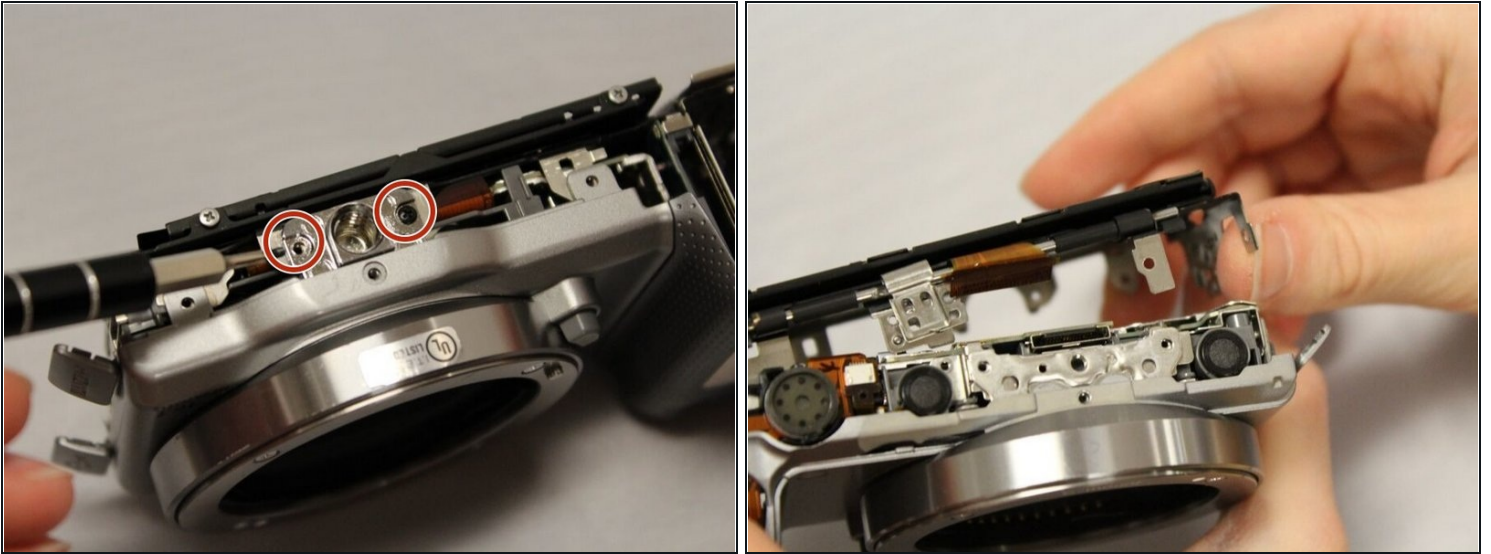
## Step 9



- To the right of where you unscrewed the copper screws, unscrew 4 black 1.2 mm Phillips #000 screws.

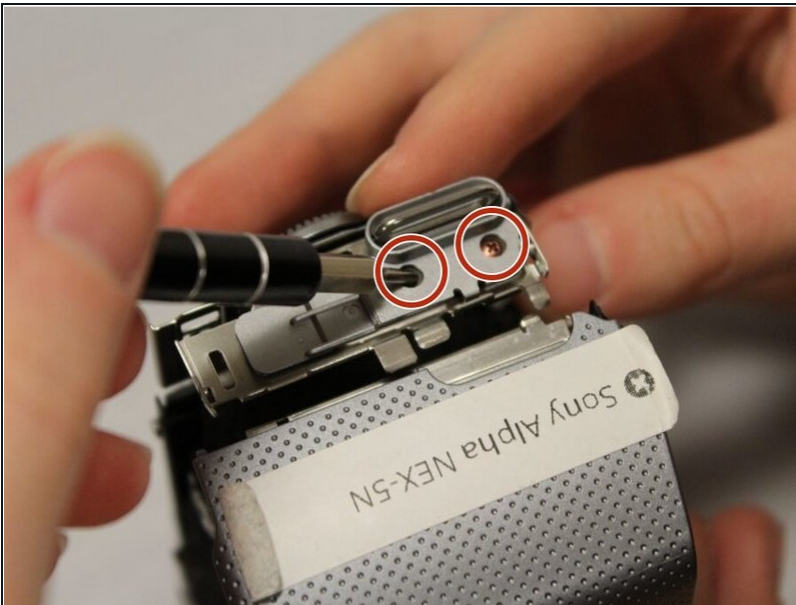


## Step 10



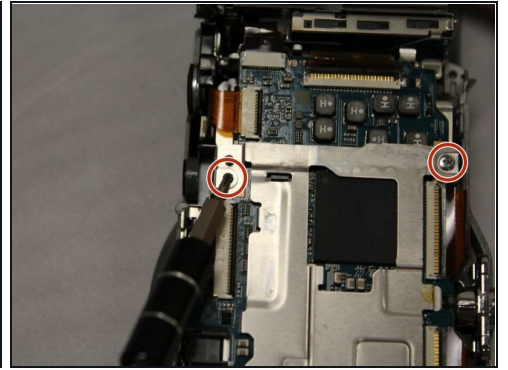
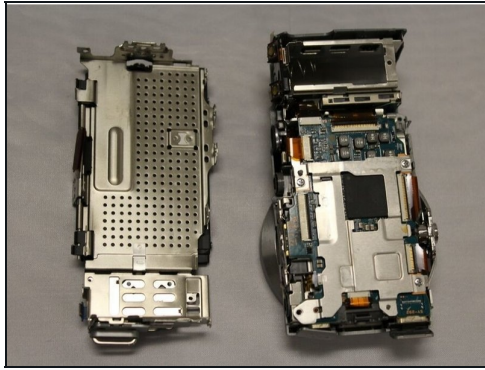
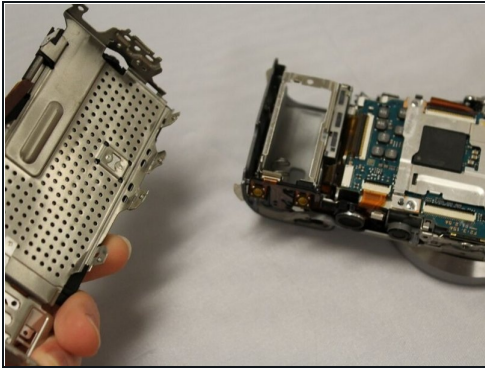
- Locate the tripod port.
- Unscrew 2 black 1.2 mm Phillips #000 screws, one on each side of the tripod port.
- Pull the section holding the LCD screen away from the device body.

## Step 11



- Unscrew 2 copper 1.2 mm Phillips #000 screws underneath the lanyard loop (near the control wheel).

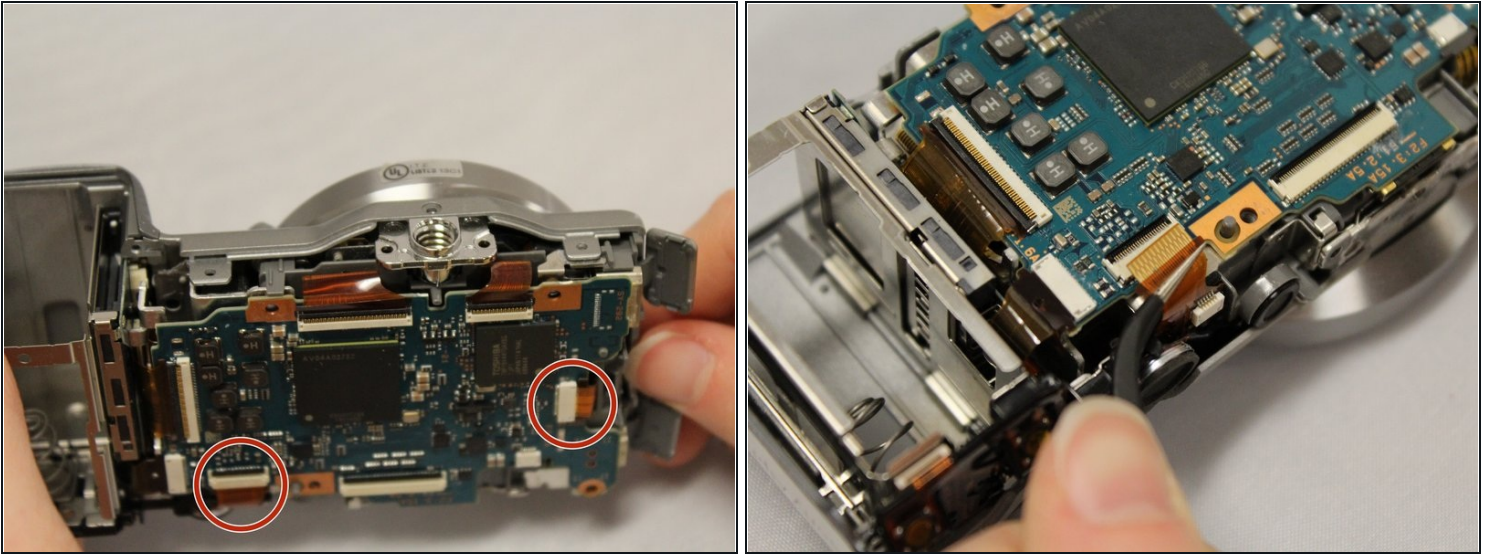
## Step 12



- Pull off the metal back from the device body.
- Locate a thin metal piece on top of the motherboard, and unscrew 4 silver 1.2 mm Phillips #000 screws in the corners of the metal piece.
- Underneath, you will locate the motherboard.
- The tripod piece will be loose. Take the piece from the device and set it off to the side.

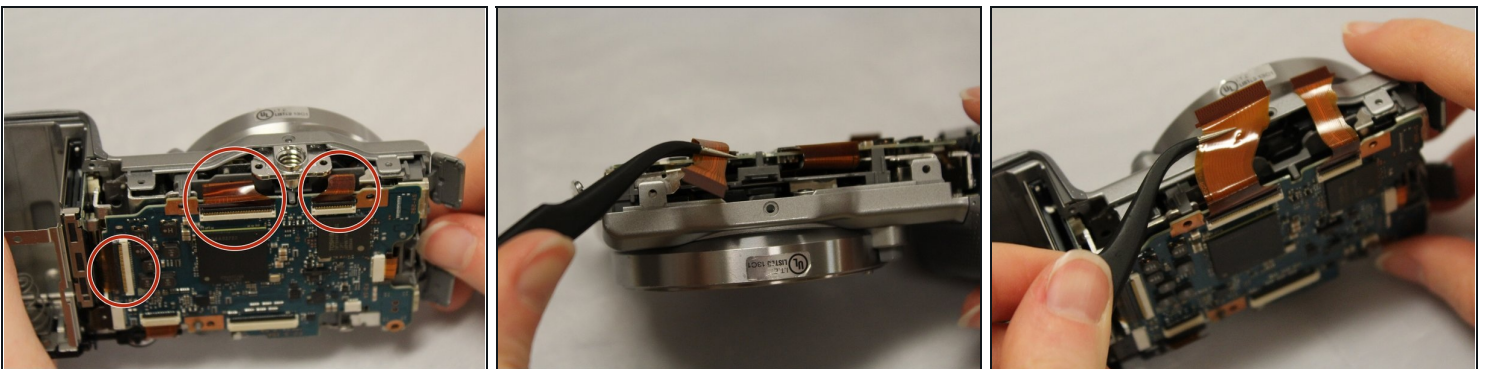


## Step 13



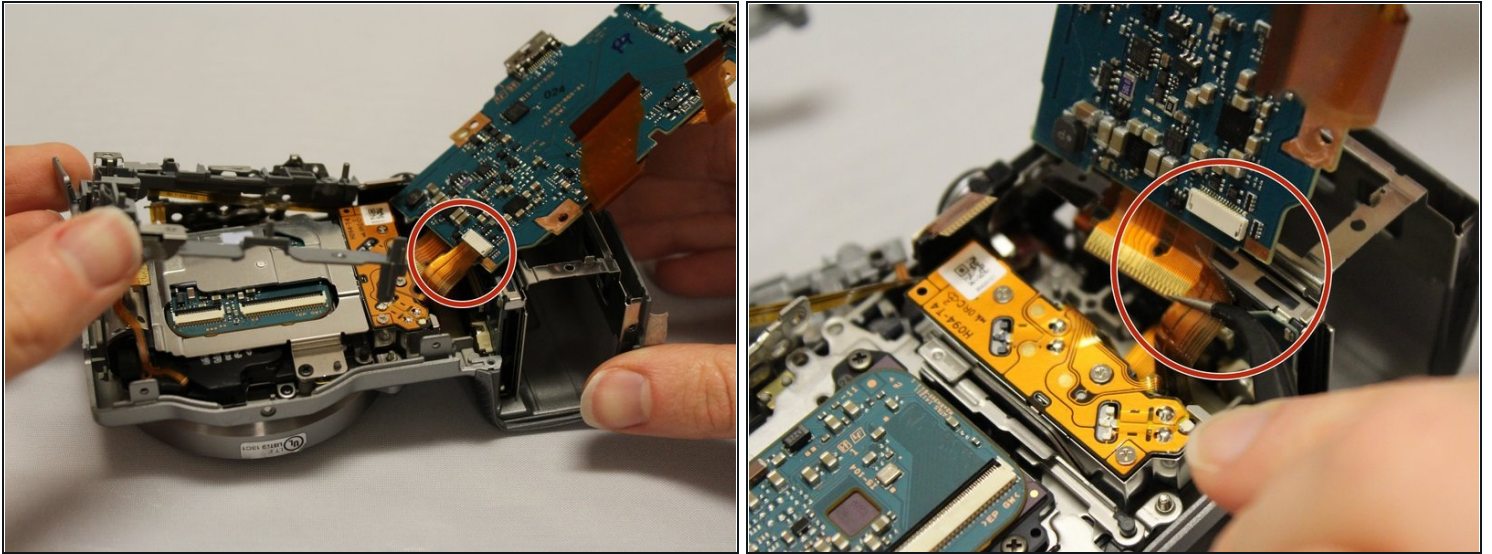
- ① The top and bottom of the device has ZIF ribbon cable connectors holding the motherboard in place.
- Flip up the white retaining tabs, and utilize tweezers to pull out the 2 thin ribbon cables, located on top of the motherboard.
- ① Do not touch the ribbons with bare hands.

## Step 14



- Locate 3 thick ribbon cables on the bottom, and flip up the white retaining tabs. Pull out the remaining ribbon cables, utilizing [tweezers](#).

## Step 15



- Lift the gray plastic camera piece surrounding the motherboard up.
- Leave the long, thin ribbon cable that runs along the gray piece attached. It is not necessary to detach.
- Lift up the motherboard to reveal one final thin ribbon cable connected to a white retaining tab underneath the motherboard.
- Flip up the white retaining tab, and utilize tweezers to pull out the final thin ribbon cable.

---

To reassemble your device, follow these instructions in reverse order.