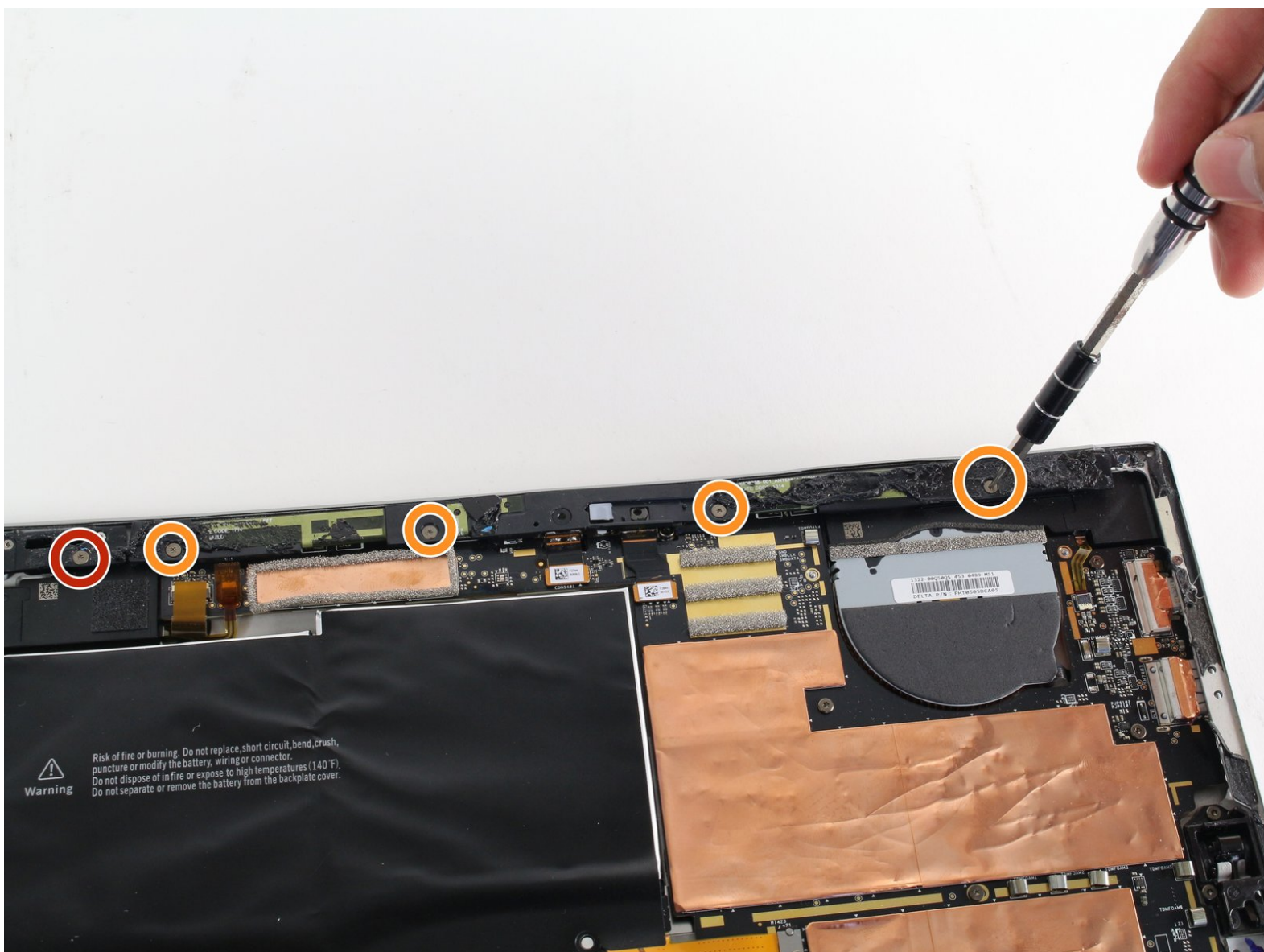




Microsoft Surface Pro 3 Rear Facing Camera Replacement

Follow this step by step guide to replace your Surface Pro 3 rear-facing camera.

Written By: Erik Snyder



INTRODUCTION

This guide will teach you how to safely remove your rear camera from you Surface Pro 3. The guide starts by removing the screen and digitizer and then goes right into removing the rear-facing camera.



TOOLS:

- [T5 Torx Screwdriver](#) (1)
- [Tweezers](#) (1)
- [iOpener Kit](#) (1)
- [T3 Torx Screwdriver](#) (1)
- [iFixit Opening Picks set of 6](#) (1)
- [Metal Spudger](#) (1)
- [Plastic Cards](#) (1)
- [Heat Gun](#) (1)
- [Spudger](#) (1)






PARTS:

- [Surface Pro 3 Adhesive Strips](#) (1)

Step 1 — Display



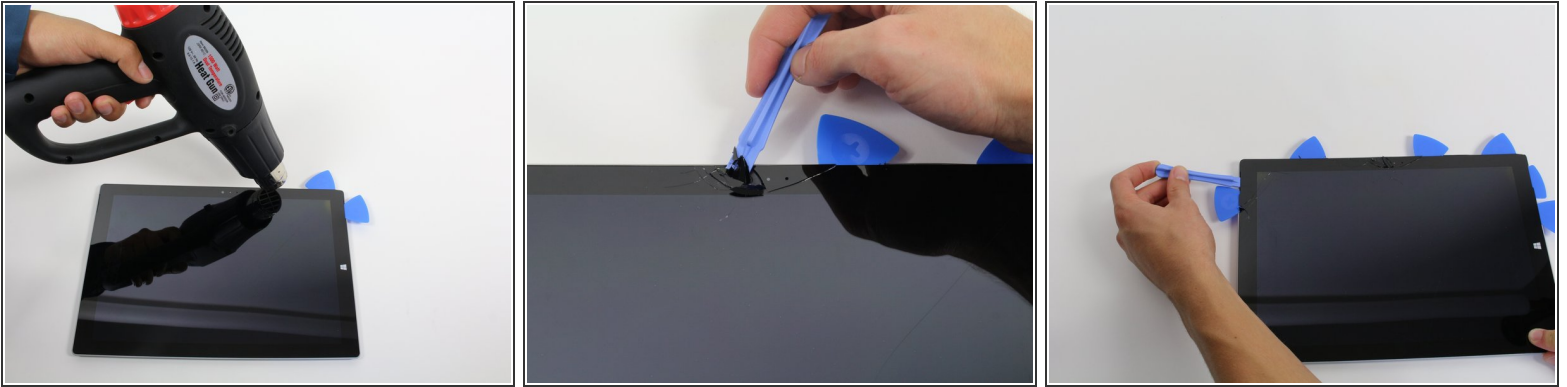
-  Before you begin, discharge the Surface Pro's battery below 25%. A charged lithium-ion battery can catch fire and/or explode if accidentally damaged during the repair.
-  The display is strongly glued to the frame of the device.
 - To remove the display, first soften the adhesive by applying heat. You can use a heat pad, heat gun, or iOpener. In a pinch, a hair dryer can also work.
 -  Be careful when using a heat gun, as too much heat can permanently damage the display and/or battery.
 - Steadily and evenly heat the perimeter of the display until it's too hot to touch, and try to maintain that temperature for several minutes.

Step 2




- Use a suction cup or an iSclack to pull up on the glass and create a slight gap between the glass and the metal frame.
 - ⓘ If your display is badly cracked, a suction cup may not adhere. It may help to first cover the display with a layer of packing tape. Alternatively, you can superglue your suction cup to the display.
 - Carefully insert an opening pick into the gap between the screen and the device to cut the adhesive.
 - Slide the pick around the sides and bottom of the display to cut the adhesive. Apply more heat as needed.
- ⚠ Work carefully—the glass is thin and will crack easily if you try to force it.
- ⚠ The wi-fi antennas are glued under the screen border along the top edge (on either side of the camera), and can be damaged easily. Use extra care when separating the top edge, and apply more heat if necessary.

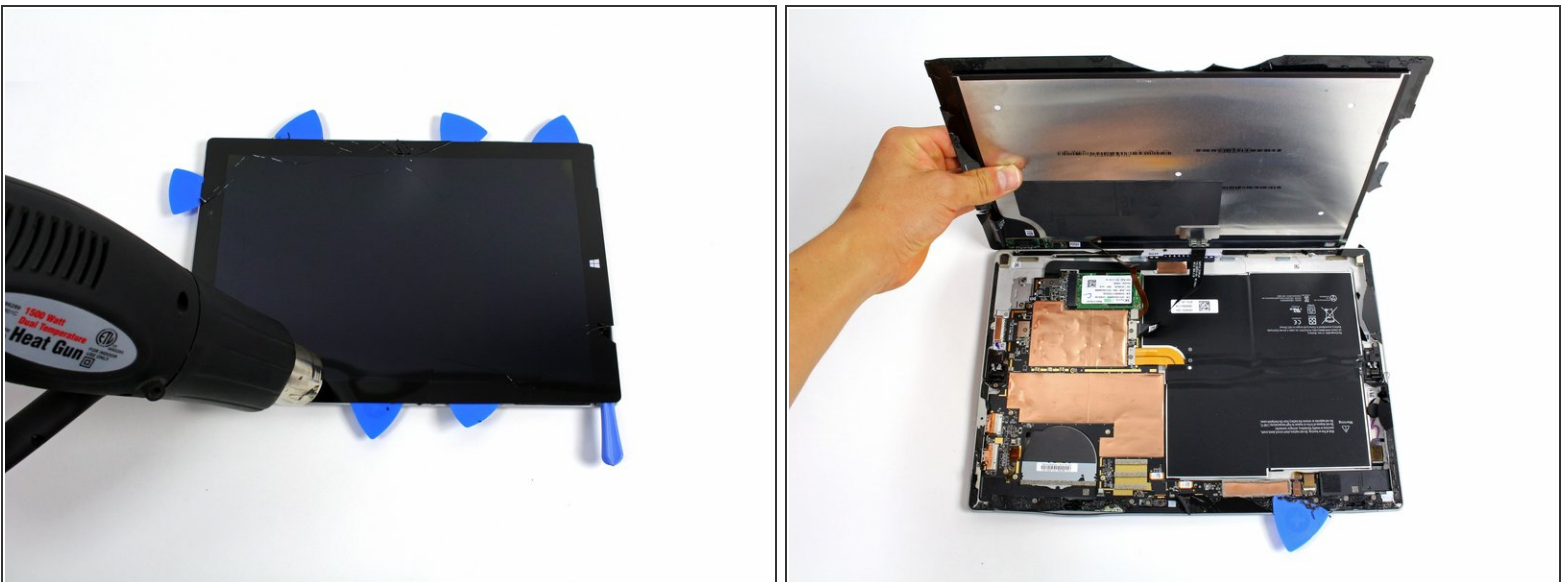
Step 3



- Continue to heat sections of the screen with the heat gun.
- As you make your way around the screen with the heat gun, use the plastic opening tool and the opening picks to pry the screen loose.

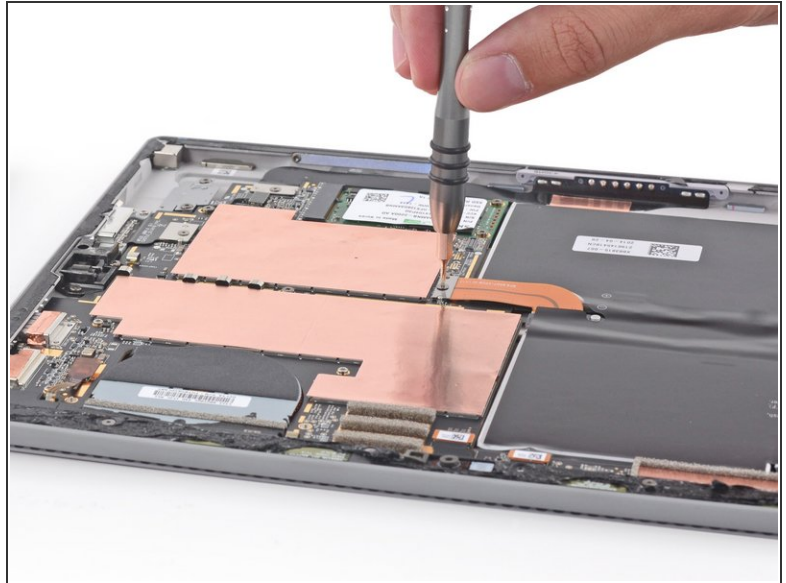
 The screen is extremely thin and very easy to break. Be careful working with broken glass.

Step 4



- Lift the screen up carefully so that no wires are torn.

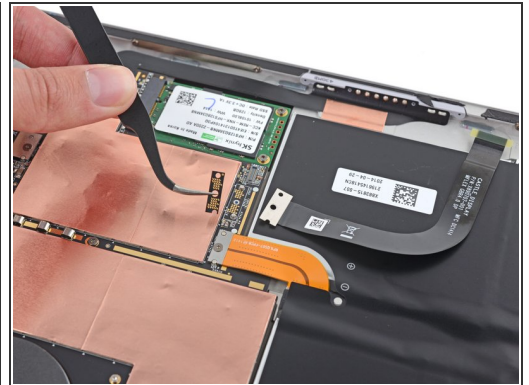
Step 5



- Remove the 3 mm T3 Torx screw securing the battery connector, and disconnect the battery connector.

⚠ Be careful not lose the small, rectangular bridge connector that lies underneath.

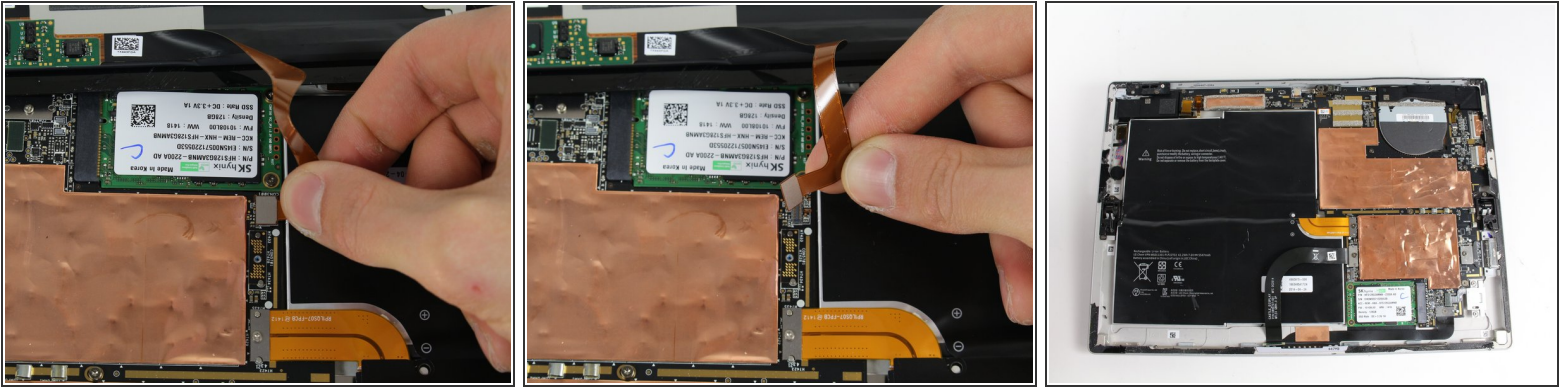
Step 6



- Remove the single 4 mm T3 Torx screw securing the display cable.
- Lift the connector to disconnect the cable.

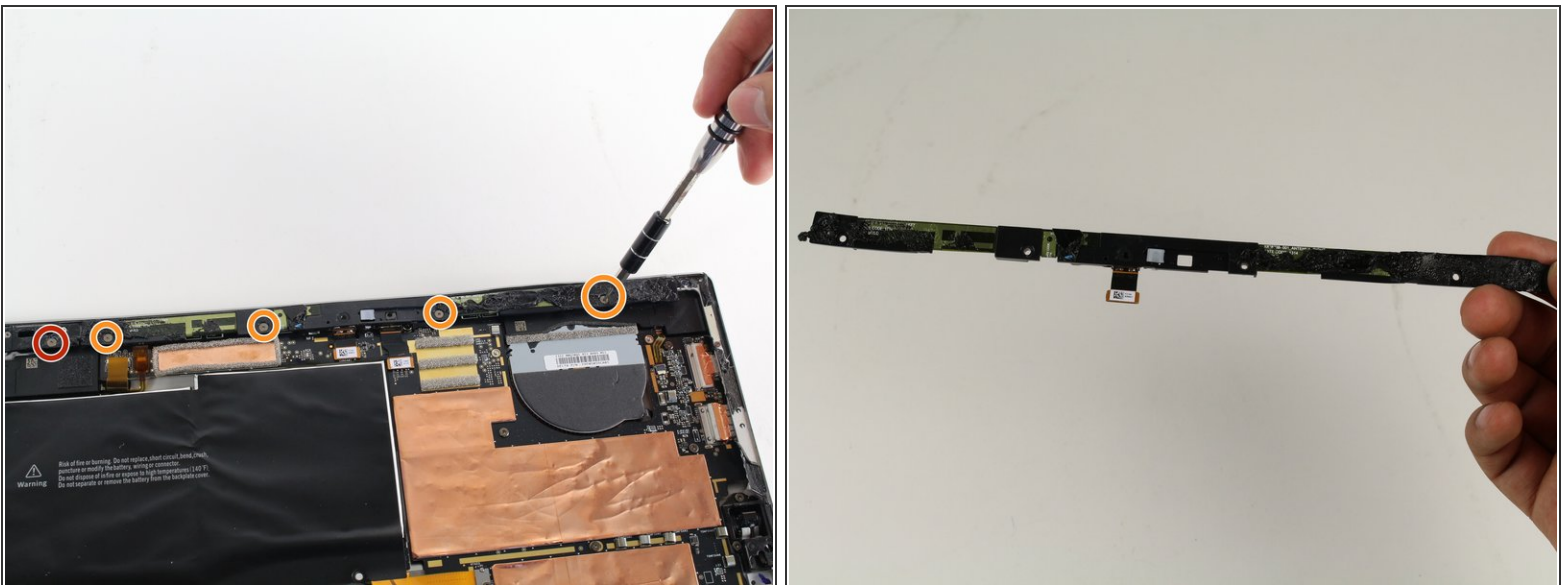
⚠ Be careful not lose the small, rectangular bridge connector that lies underneath.

Step 7



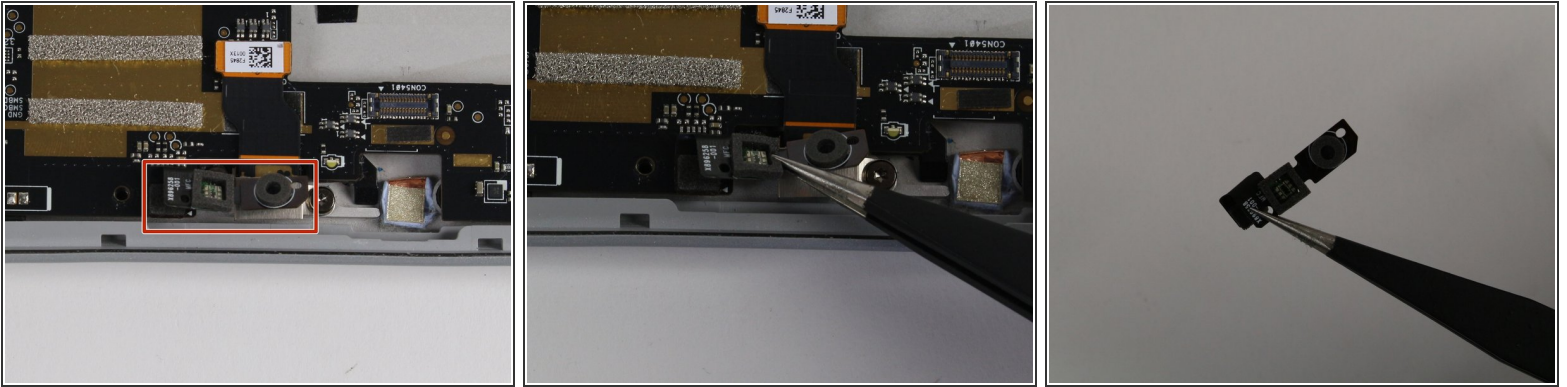
- Grasp the orange cable connected to the silver connector.
 - Carefully lift the orange cable up until the connector pops off.
 - The screen will now be completely disconnected.
- ☒ The replacement display may not include all the parts needed for installation. Save all the parts from the original display, and transfer them to the new display as needed.

Step 8 — Rear Facing Camera



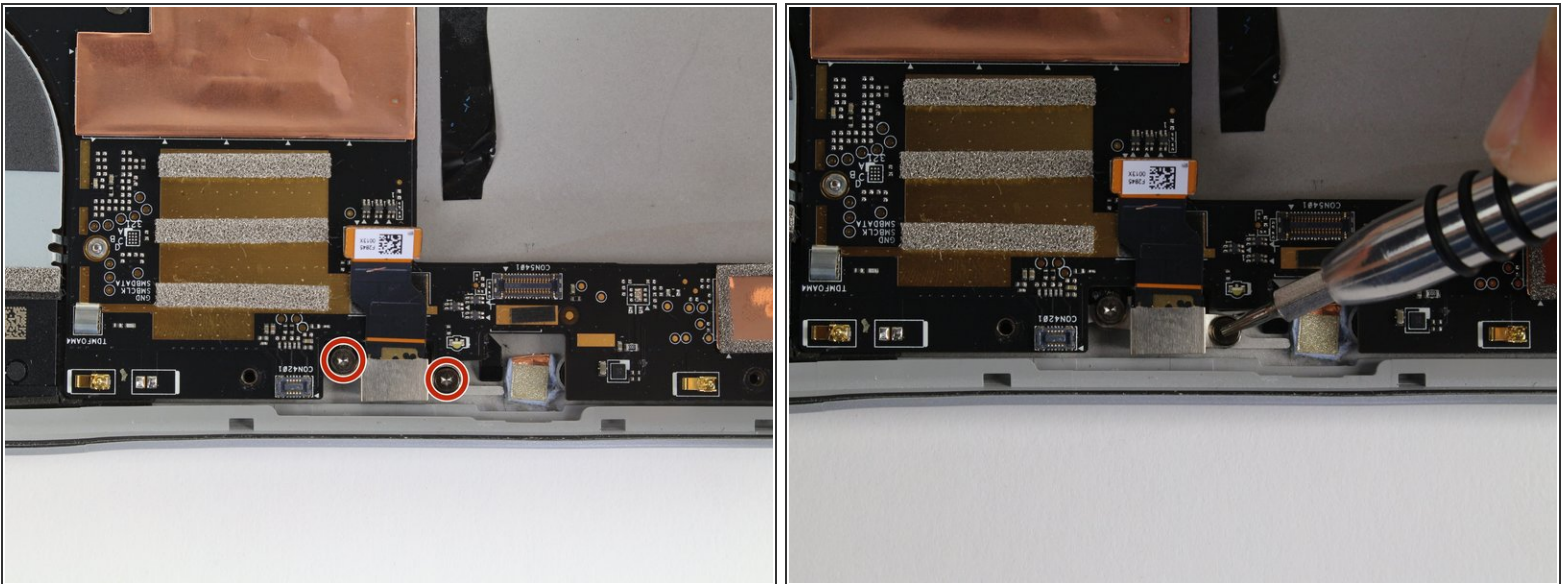
- Remove the 4mm screw with the T3 Torx Screwdriver.
- Remove the four 7mm screws with the T3 Torx Screwdriver.

Step 9



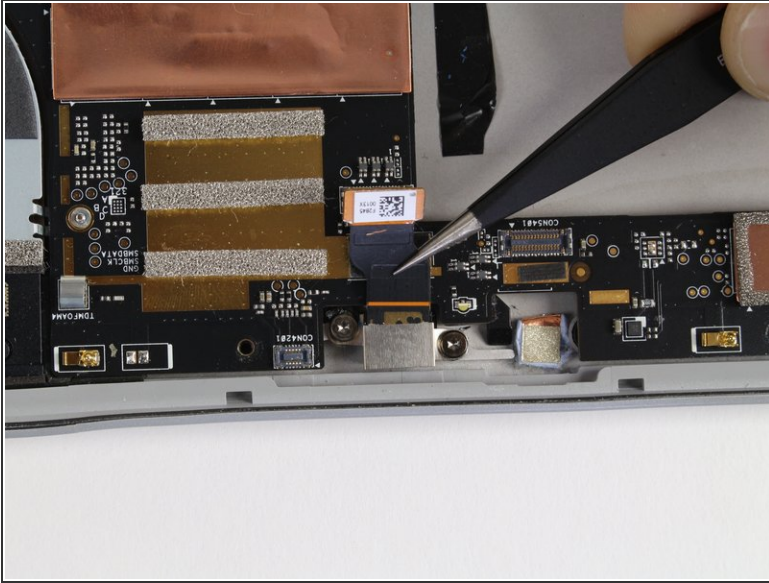
- Locate the black piece shown.
- Remove this piece by gently lifting it up with the tweezers until it pops off.

Step 10



- Remove the two 4mm screws with the T5 Torx Screwdriver.

Step 11



- Remove the rear camera with the tweezers.

To reassemble your device, follow these instructions in reverse order.