



# Fujifilm Instax Mini Eight Camera Shell Replacement

The camera shell is the plastic casing that...

Written By: Boyang Wu



# INTRODUCTION

The camera shell is the plastic casing that makes up the outside of the Fujifilm Instax Mini 8; which is meant to hide wires, protect the film, and hold the main components of this camera together in a compact manner. A damaged shell will compromise the integrity of the device and may cause other parts of the camera to malfunction.

---

## TOOLS:

[iFixit Opening Tool](#) (1)

[Spudger](#) (1)

[64 Bit Driver Kit](#) (1)

---

## Step 1 — Camera Shell



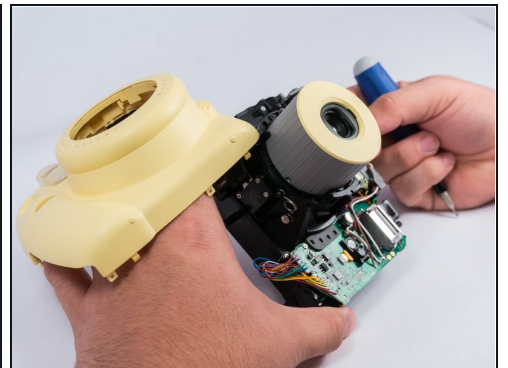
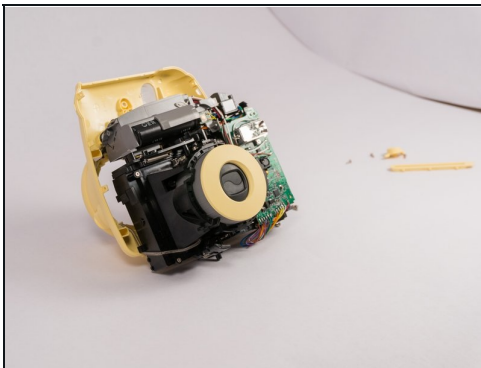
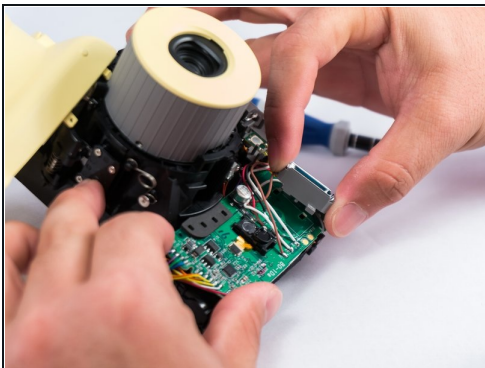
- Start off by looking at your camera and rotating it to locate all the screws. There should be nine screws in all.
- One screw is hidden below the oval plastic cover of printers opening. Remove the cover to unveil the ninth screw.

## Step 2



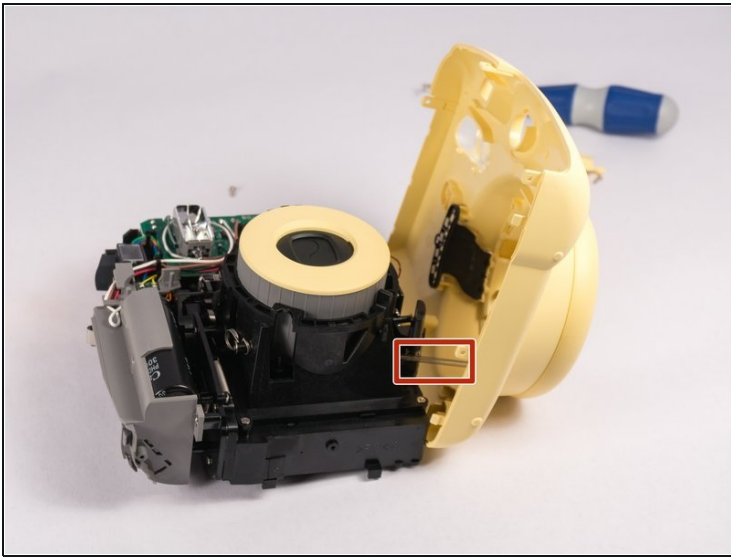
- Press the tab down in order to unlatch the film compartment cover.
- Remove the film from the compartment (if any is present)
- Remove the compartment cover completely.
- Begin by using the small #00 Philips head screwdriver and turning at a counter-clockwise fashion to remove screws.

## Step 3



⚠ Use the plastic opening tools and spudger to safely remove the front shell casing.

## Step 4



- Lift the front part of shell up, assuring not to pull too hard due a spring that is connect to the shell and the inside of the camera.
- Carefully, using a small #00 Philips head screwdriver, remove the spring from the inside component of the camera.
- At this point you should have the shell removed completely. Congratulations! Repeat the steps backwards to get the shell back on your camera unit.

---

To reassemble your device, follow these instructions in reverse order.