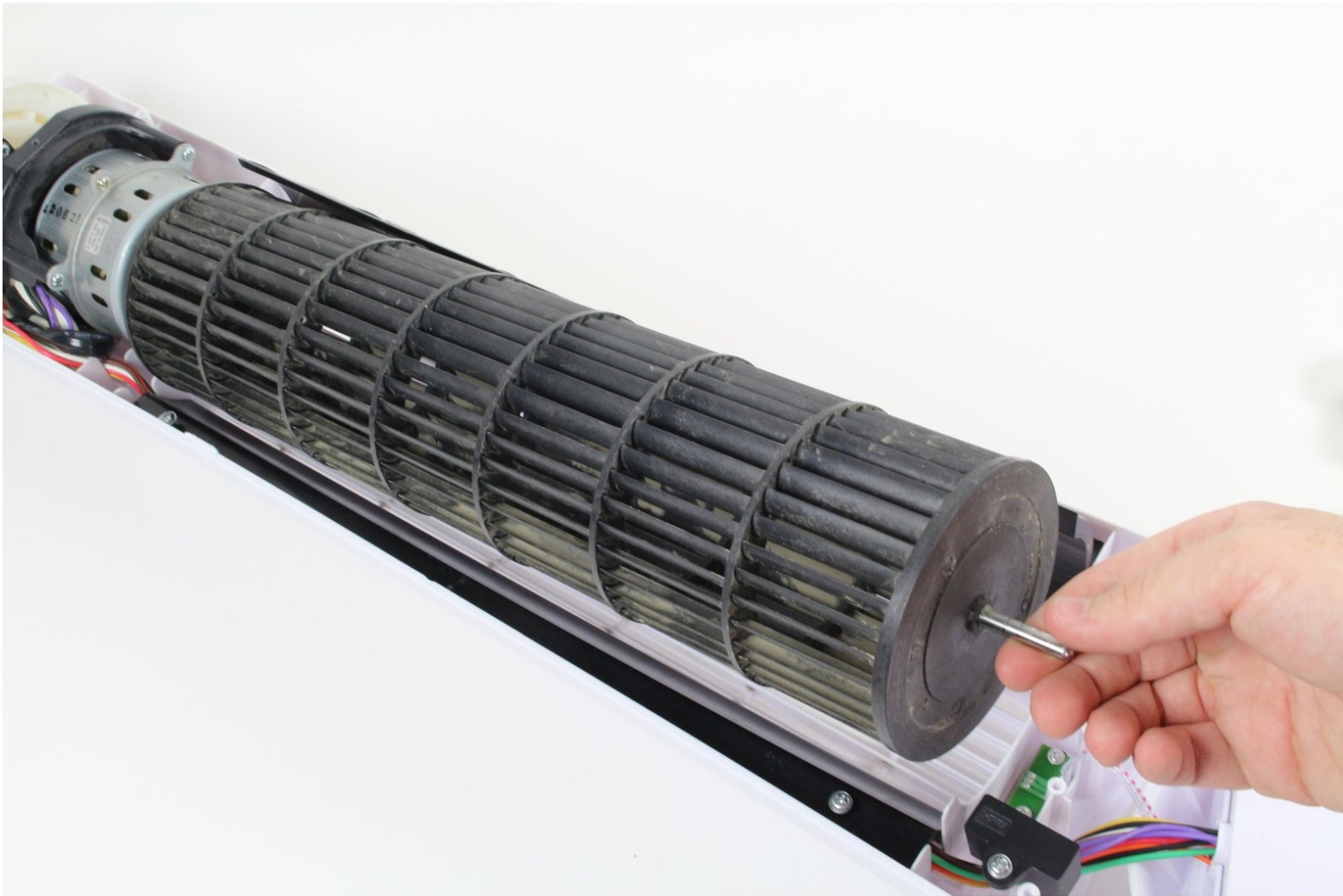




# Honeywell HY-254-TGT Fan Blade Replacement

Use this guide to remove the fan blade.

Written By: Mark Schefter



---

## INTRODUCTION

Follow this guide to remove the fan blade to allow for cleaning or replacement.

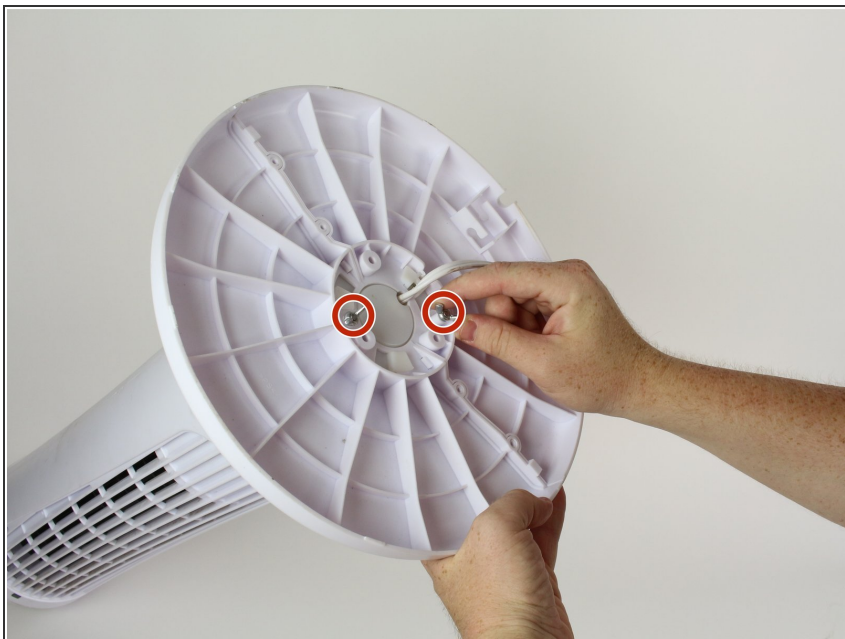
---



### TOOLS:

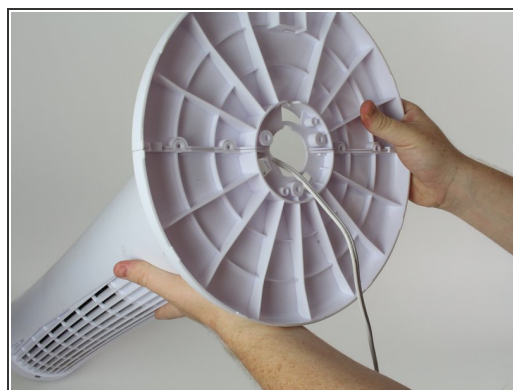
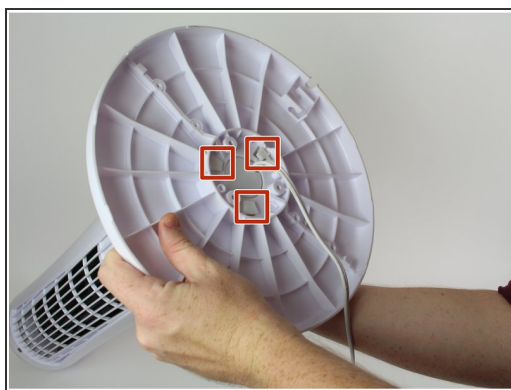
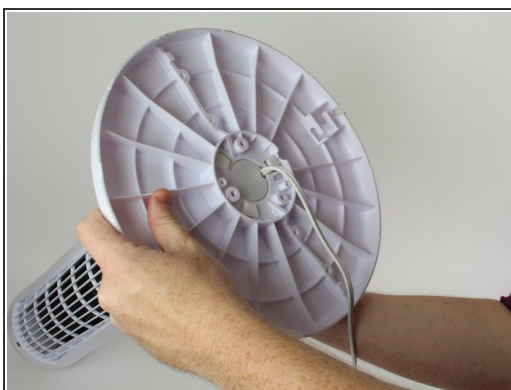
- [Phillips #2 Screwdriver](#) (1)
  - [iFixit Opening Tools](#) (1)
-

## Step 1 — Plastic Assembly



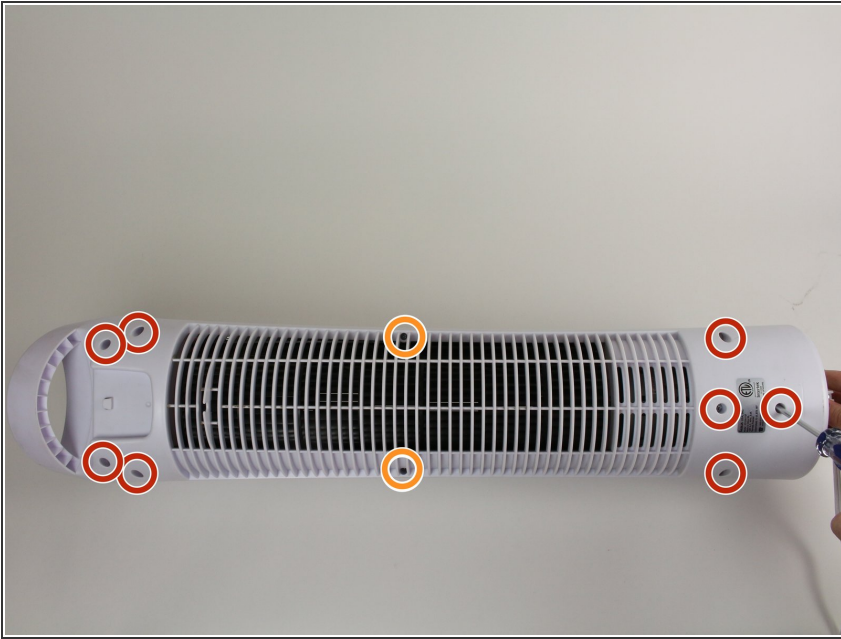
- Remove the two 3/4" wing screws on the bottom of the fan by rotating them counter-clockwise.

## Step 2



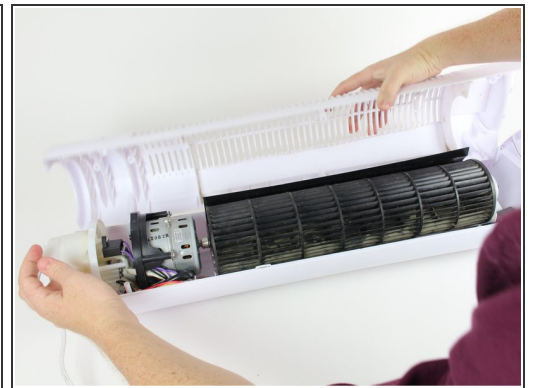
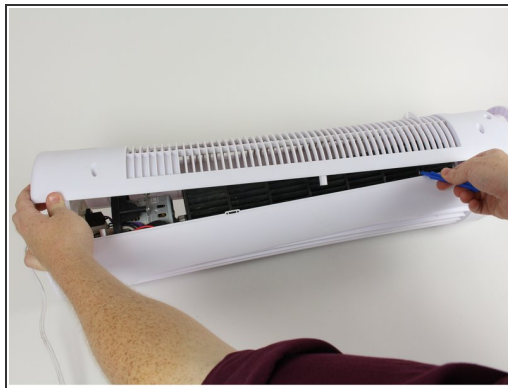
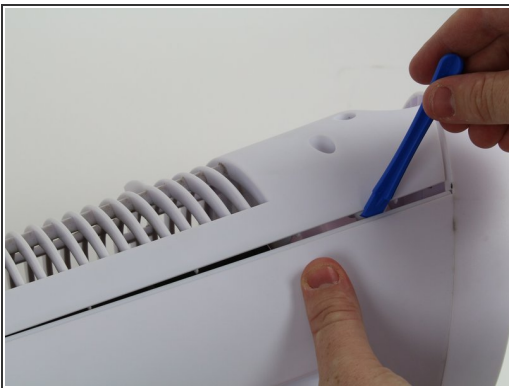
- Twist the fan base counter-clockwise until the pins line up as shown.
- Pull the base straight towards you to remove it, feeding the wire through the base.

## Step 3



- Remove all of the marked 1/2" Phillips #02 screws on the backside of the fan
- Remove the two marked 3/4" Phillips #02 screws in the middle.

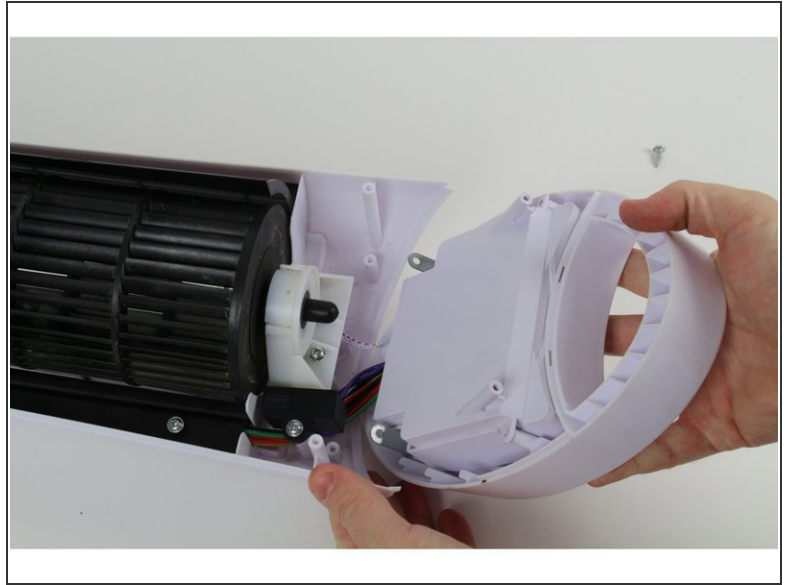
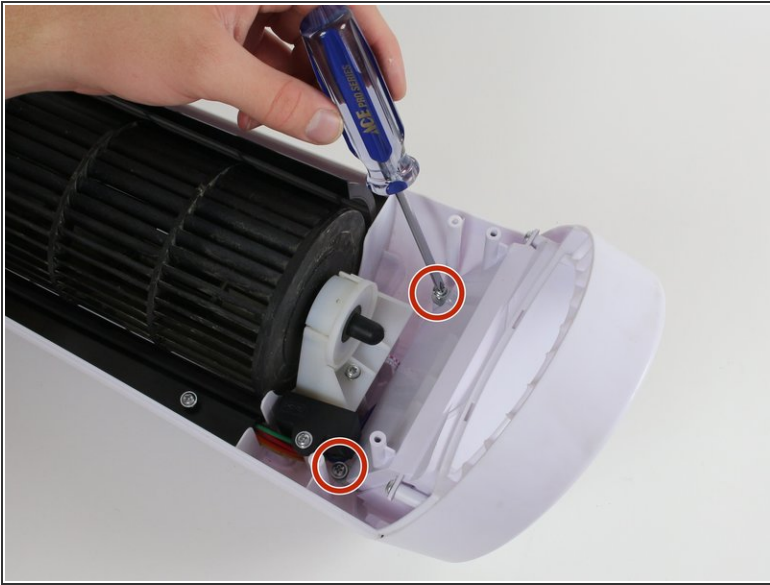
## Step 4



- Use a plastic opening tool or screwdriver to pry off the back of the fan, starting from the top down.
- ⓘ Be aware of two clips inside the fan, towards the bottom third of the fan. If the back appears stuck on certain spots, push inward edges of the front casing around the problematic area.



## Step 5 — Fan Blade



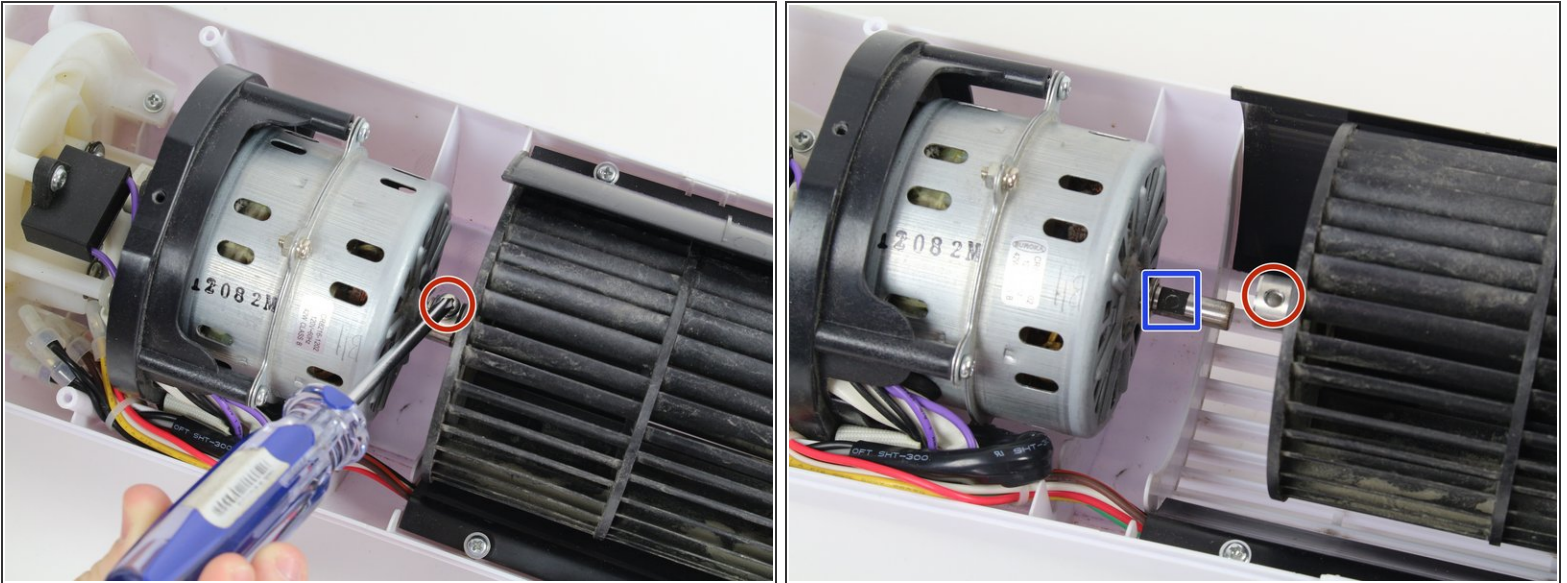
- Unscrew the two 1/2" Phillips #02 screws.
- Upon doing so, the front panel of the fan can be leaned forward and set down.
- ⓘ The front panel is not detached from the body and cannot be completely removed. Do not try to forcefully remove it, as it may cause damage to the electronics.

## Step 6



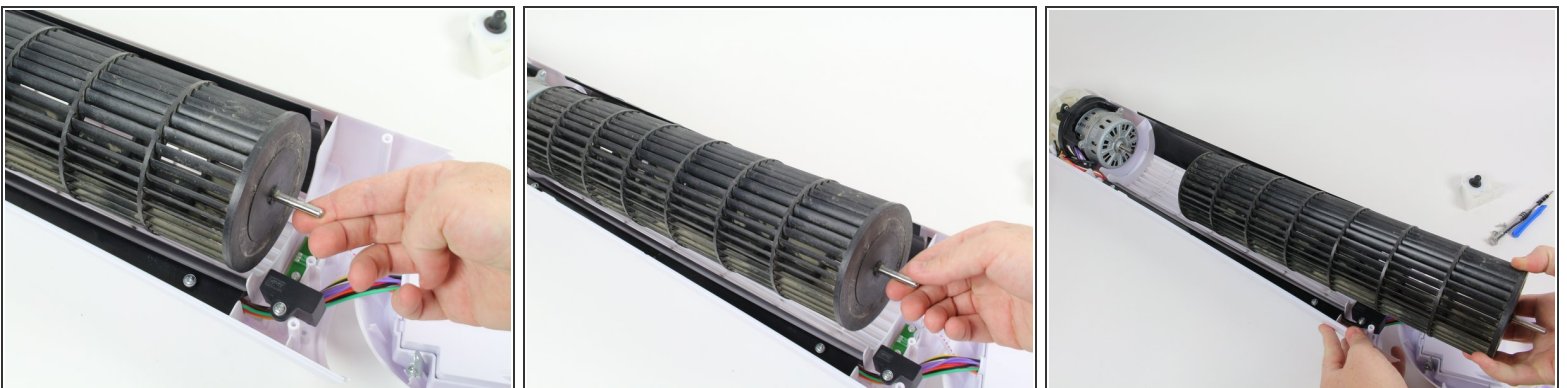
- Unscrew the two marked 1/2" Phillips #02 screws on the part holding the fan blade.
- Slide the plastic fan cap off the fan while holding the fan blade to ensure it comes off smoothly.

## Step 7



- Remove the 1/4" Phillips #02 screw between the fan and the motor, located at the bottom of the fan.
- ⓘ You may need to rotate the fan blade to find the screw.
- ⓘ Upon reassembly, make sure that the notched part of the motor axle (blue square) lines up with the screw hole on the fan blade.

## Step 8



- Return back to the top of the fan blade. Lift the fan blade to a slight angle and gently pull it towards you.
- ⓘ If the fan blade seems stuck, spin the fan blade back and forth while pulling it towards you.

To reassemble your device, follow these instructions in reverse order.