

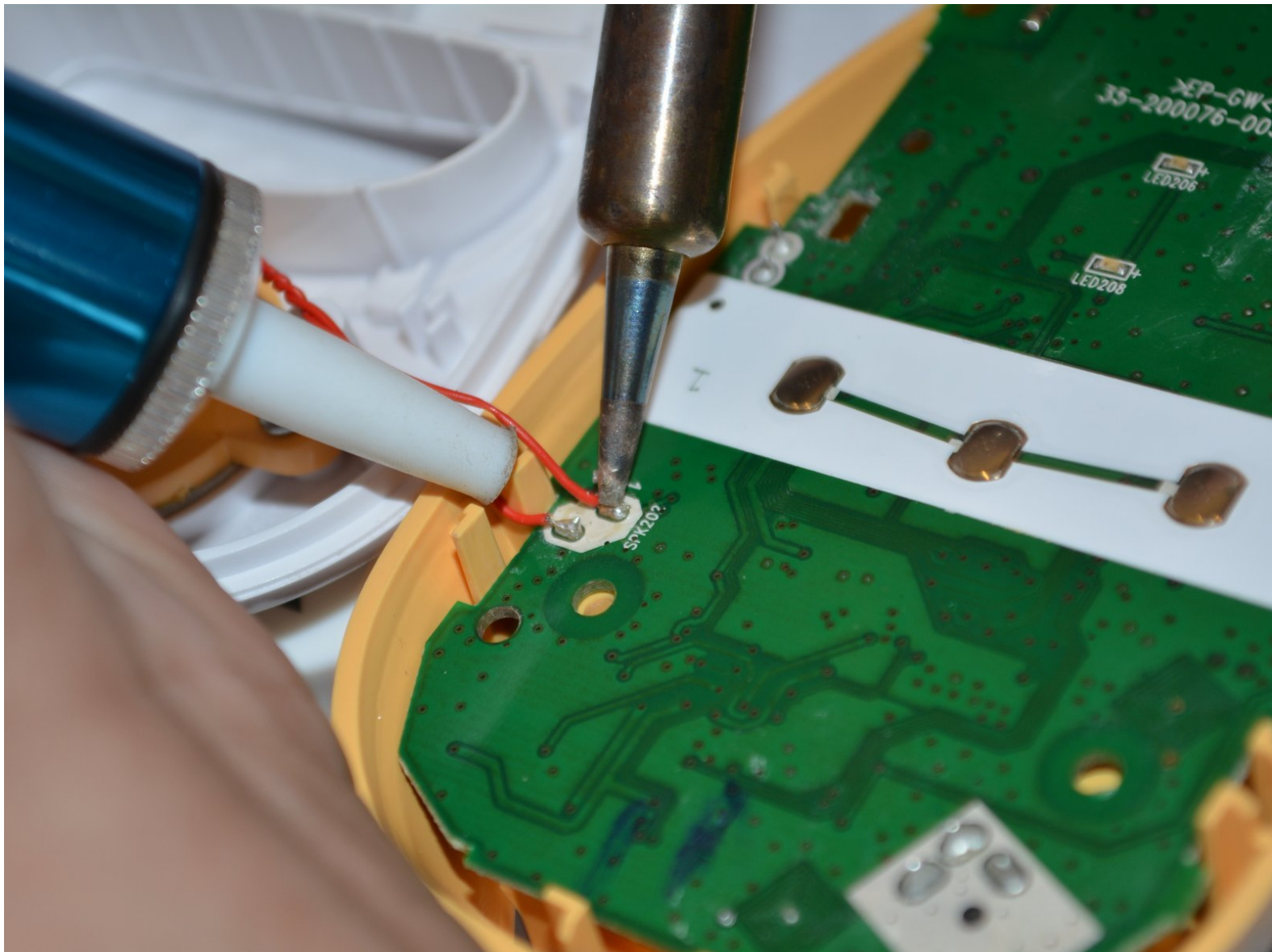


VTech Safe and Sound DM111-2 Parent Unit

Motherboard Replacement

If the device is behaving erratically doing things at times it shouldn't. If any such incidents are occurring after addressing individual components then continue and replace the motherboard.

Written By: Jean Carlos



INTRODUCTION

Teaches how to replace the Motherboard for the Parent Unit.



TOOLS:

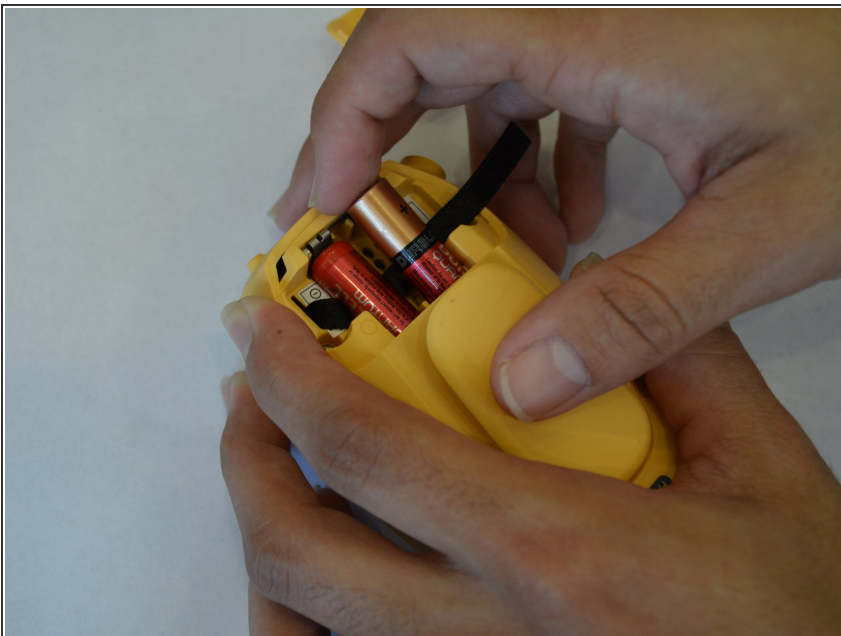
- [Portable Soldering Iron](#) (1)
 - [iFixit Opening Tools](#) (1)
 - [Phillips #00 Screwdriver](#) (1)
 - [Phillips #0 Screwdriver](#) (1)
-

Step 1 — Battery



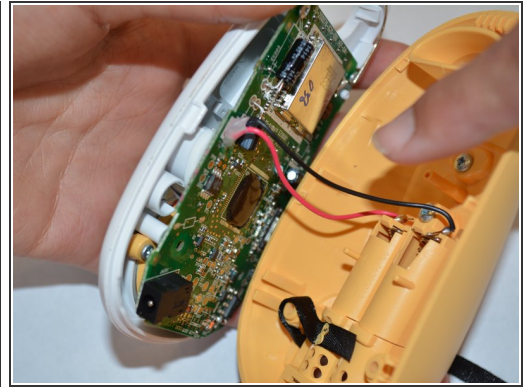
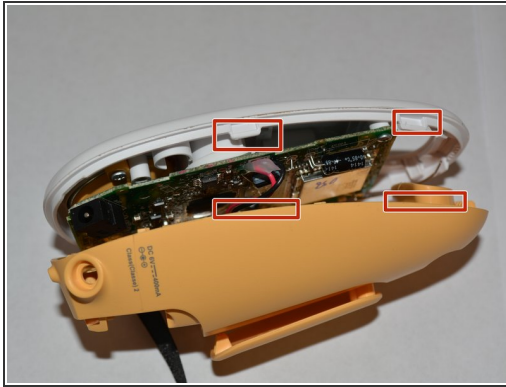
- Expose the battery compartment by removing the lower back cover of the device.
- Do this by holding the back side of the device upside down in your hands and applying pressure to the indented portion with both thumbs.

Step 2



- Once the batteries are exposed, use your index finger to push the battery against the spring and pull up to dislodge the battery.
- ⚠ Make sure to check for battery acid or other corrosive substances before touching the battery. If needed, use latex gloves to avoid skin irritation from battery acid.

Step 3 — Parent Unit Motherboard



- Use a plastic opening tool to gently pry along the middle of the 2 sections of the plastic housing in order to release plastic latches on the inside of the housing.

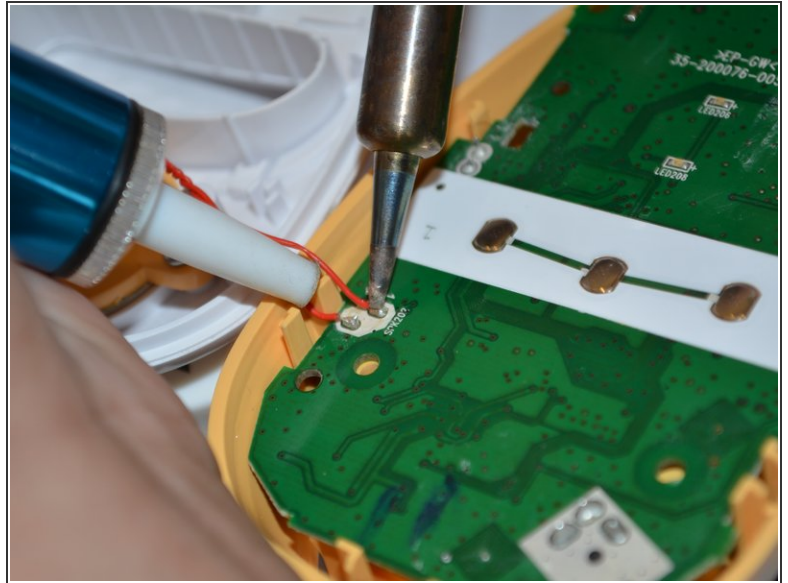
⚠ Do not take apart briskly or separate the two units completely as they are connected by thin wires.

Step 4



- Gently pull apart the two housing component taking care not to damage the wire connecting them.
- Check the wire connections from the battery compartment to the motherboard for any cuts, burn marks, or loose wires.
- Likewise check the soldering joints for the antenna, and the power jack, and speakers, in order to make sure the issue is with the motherboard and not the wires or other components.

Step 5



- Free the motherboard by unscrewing the two 4mm phillips head screws at the top of the motherboard
- Flip over the motherboard and de-solder the wires connecting the speaker to the motherboard

To reassemble your device, follow these instructions in reverse order.