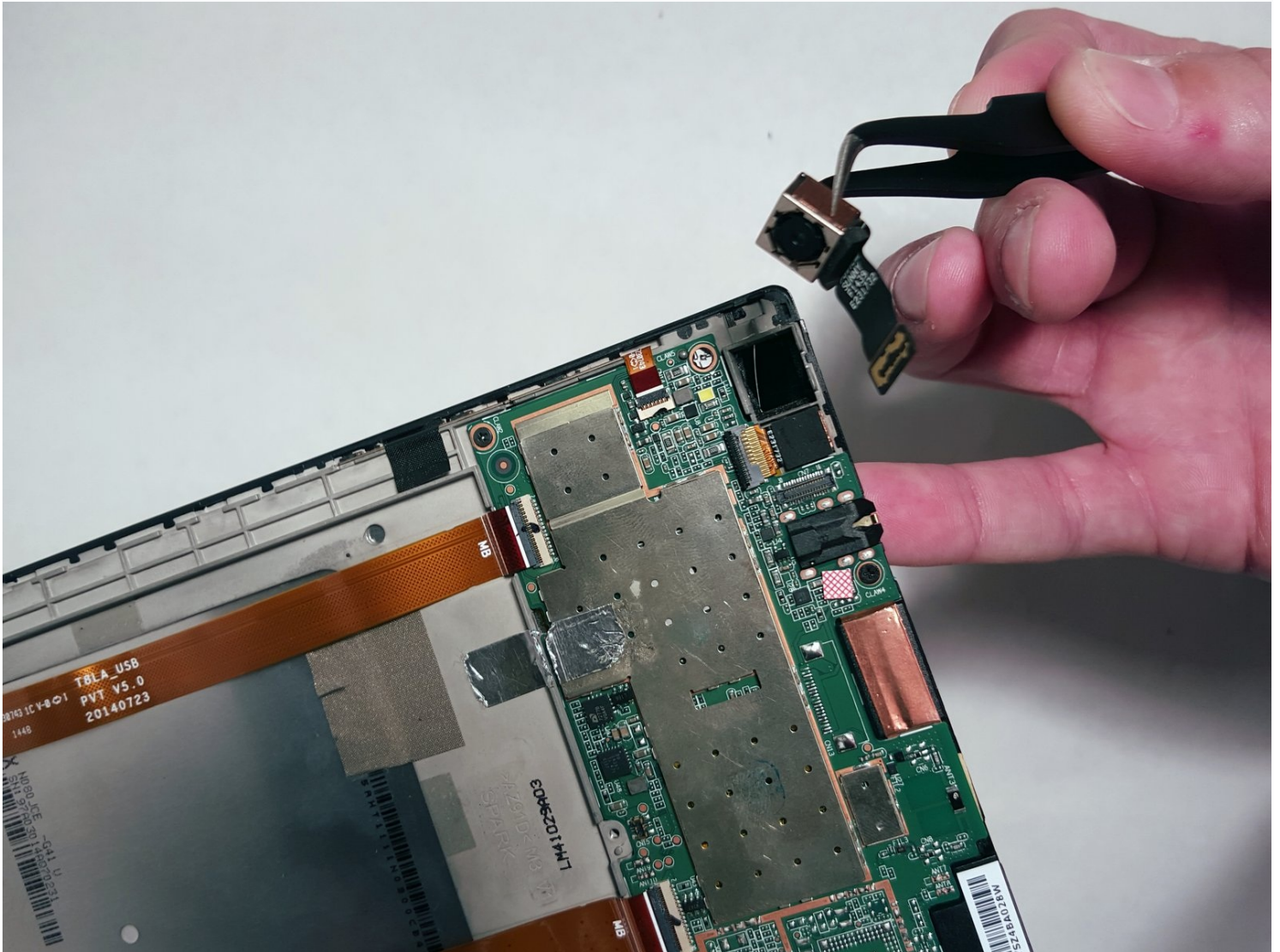




Lenovo Tab S8 Camera Replacement

In this guide, moving the camera is the main...

Written By: Thomas Rill



INTRODUCTION

In this guide, moving the camera is the main focus. Digital cameras themselves are very complex, however, this guide will show you just how easy it is to replace one.

TOOLS:

Spudger (1)

Screwdriver Phillips J000 (1)

Tweezers (1)

Step 1 — Battery



 Make sure the device is powered off.

- Gently insert a spudger into one of the bottom corners between the screen and body case.
- Slide the spudger along the inside of the crack in order to pry the case open.

 Be careful of the small volume and power buttons when prying the case with the spudger. They are connected with small pieces of plastic that break easily.

Step 2



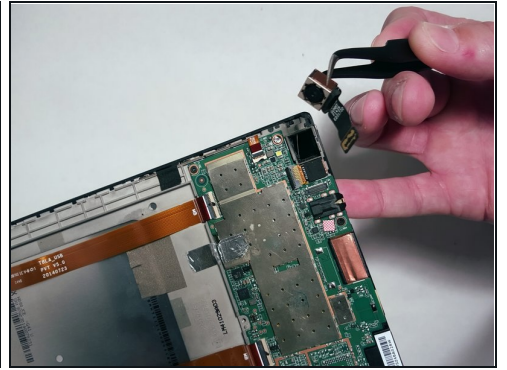
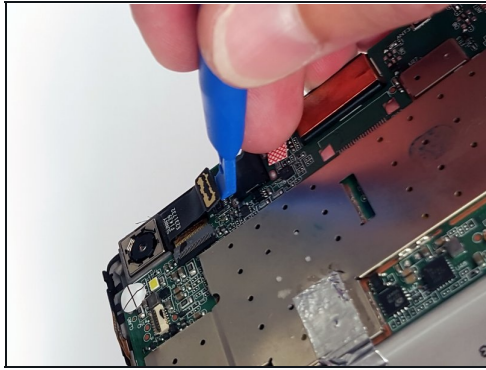
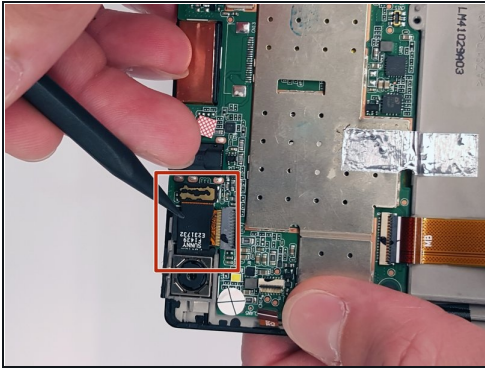
- After removing the cover, remove the M1.6 x 2 mm screw from the battery cable with the JIS J000 screwdriver.
- ⚠ Using screwdriver bits that do not fit in the screw head might strip the screw and render it unusable.
- Remove the tape by gently scraping the edges up with the spudger.

Step 3



- ⚠ Before removing the battery, be sure to disconnect the ribbon cables underneath it. The cables might stick to the battery during removal and cause damage.
- Gently lift the flaps on the four ZIF connectors to disconnect the cables.
- Use the [plastic card](#) to gently pry the battery from the device.
- ⓘ There may be glue holding the battery to the device. Use the spudger to detach any glue while the battery is partially raised by the card.

Step 4 — Camera



- Use a plastic opening tool to gently pry the end of the camera's black ribbon cable (opposite the camera lens) off of the motherboard.
- Once the cable is free, use tweezers to pull the camera from the body.
- ⓘ The camera may be stuck in place with a piece rubber foam. Take care to not damage the camera by applying too much pressure.

To reassemble your device, follow these instructions in reverse order.