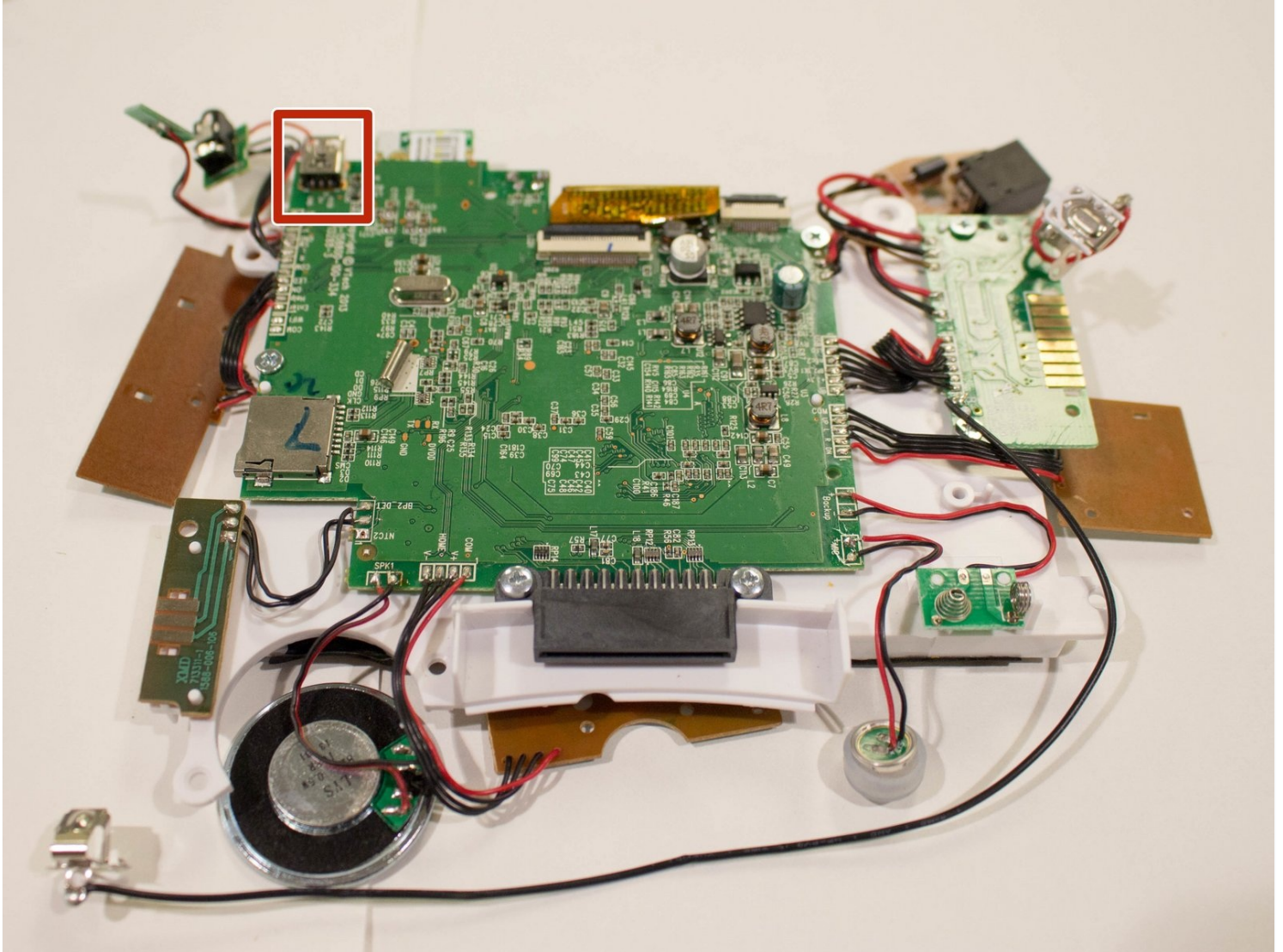




Vtech InnoTab 3S USB Port Replacement

This guide will walk you through replacing the...

Written By: taweewatchulikavit



INTRODUCTION

This guide will walk you through replacing the USB port on your child's Vtech InnoTab 3S.

TOOLS:

Lead-Free Solder (1)

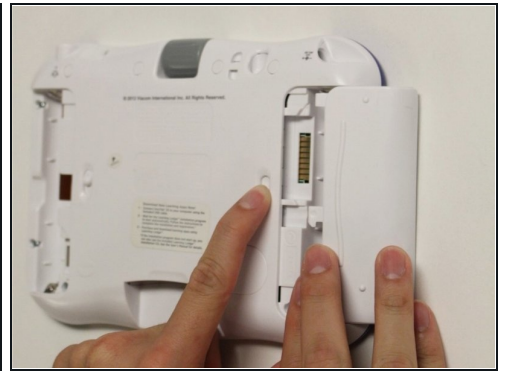
Metal Spudger (1)

Phillips #1 Screwdriver (1)

Phillips #000 Screwdriver (1)

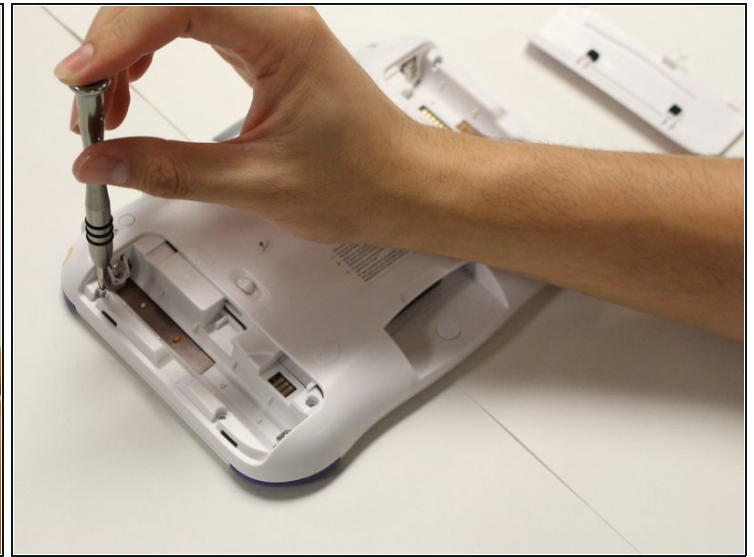
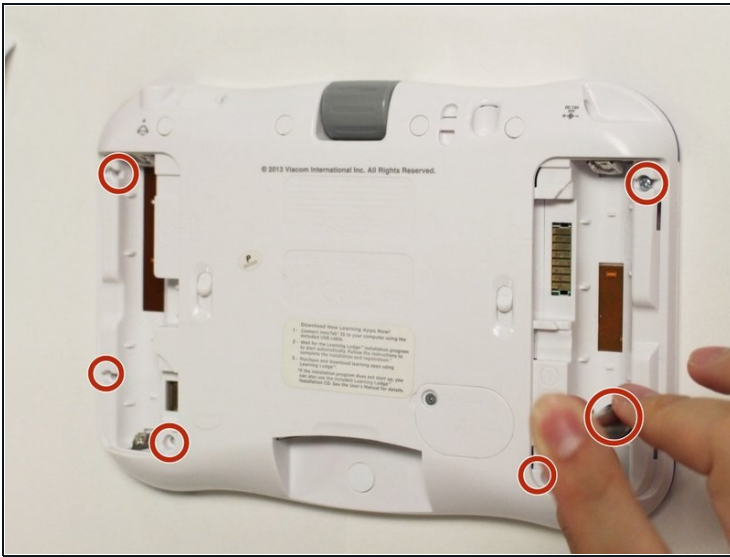
Tweezers (1)

Step 1 — Rear Panel



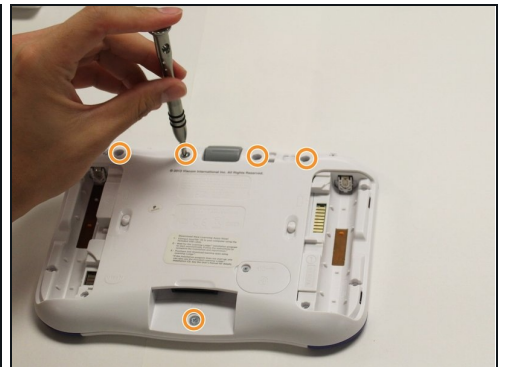
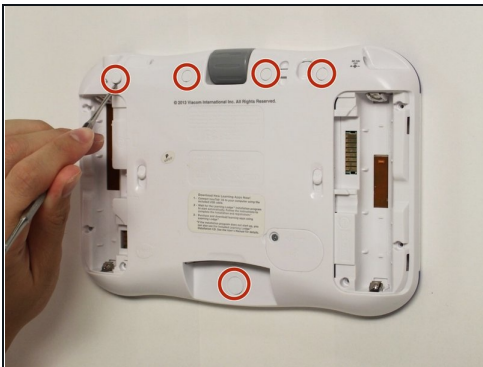
- While holding the battery compartment locks down, slide the two battery doors outwards from the sides of the device.
- Remove the batteries from the device.

Step 2



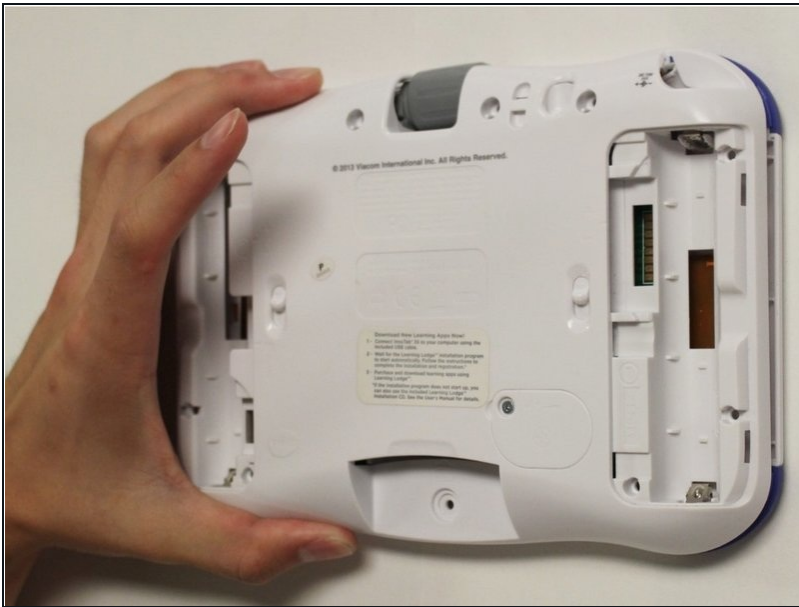
- Remove six 7 mm screws from the interior of the battery compartment using a Phillips #1 screwdriver.

Step 3



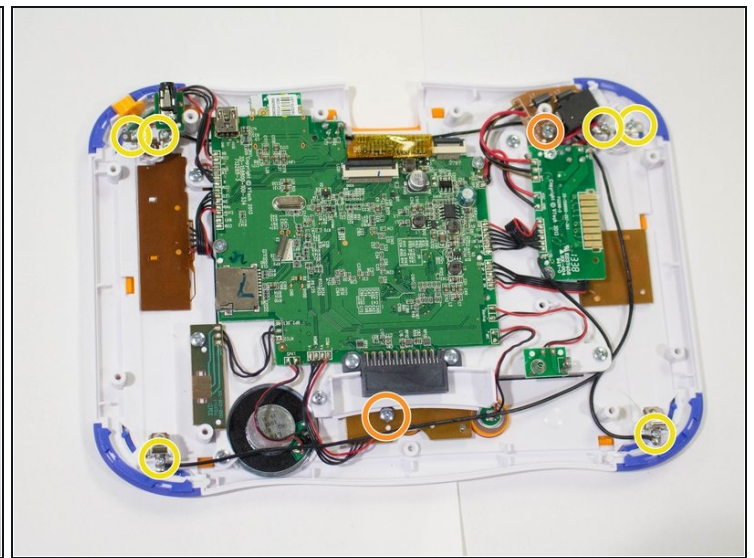
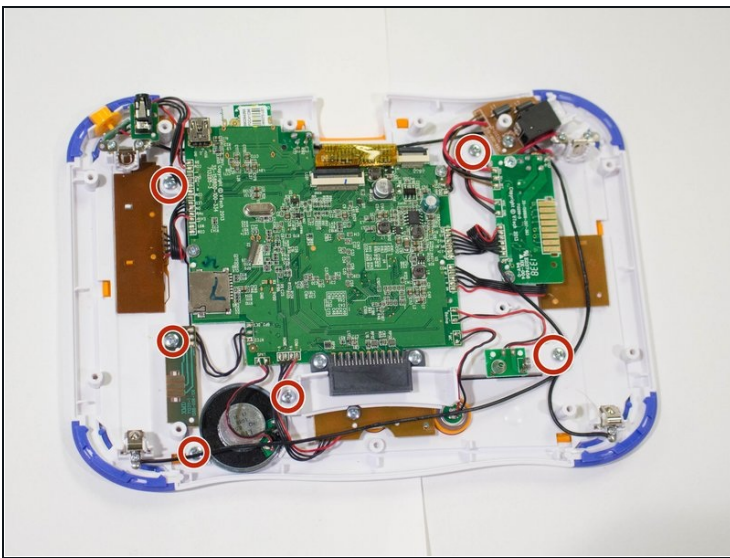
- Using a nylon spudger, remove the five caps that hide the screws.
 - ⚠ Potential for device damage: Be careful not to scrape the plastic from the device using the spudger.
 - ⓘ When removing the caps, hold the spudger vertical to the board to make removal easier. Also try to push in with your spudger pointing towards the bottom of the device.
- Remove the five 5 mm Phillips #1 screws from the rear panel of the device.

Step 4



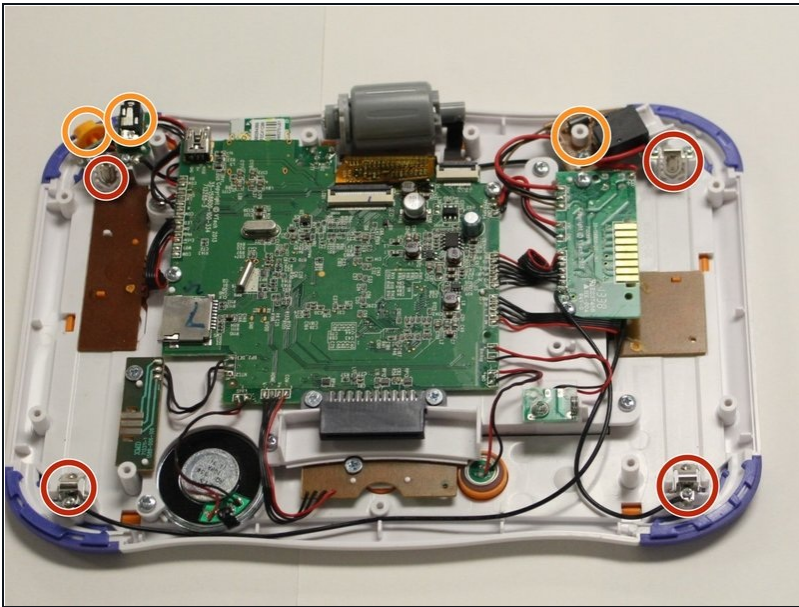
- Carefully remove the rear panel from the front panel of the device.
- ① Once the rear panel is removed, you'll be able to see the motherboard and other components within the Vtech InnoTab 3s.

Step 5 — Motherboard



- Remove the six screws that secure the motherboard to the front panel of the device using a Phillips #1 screwdriver.
- Remove the other 5mm screws that secure the charger port and the buttons to the inside of the front panel.
- Remove the six 3 mm screws securing the battery clip.

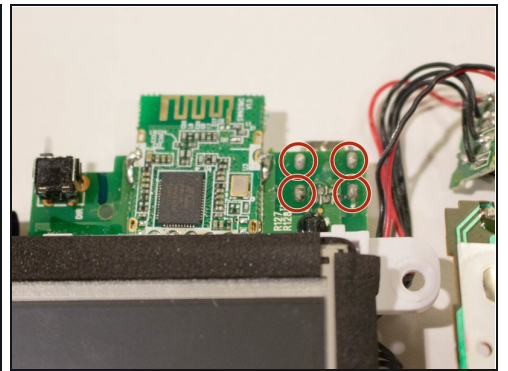
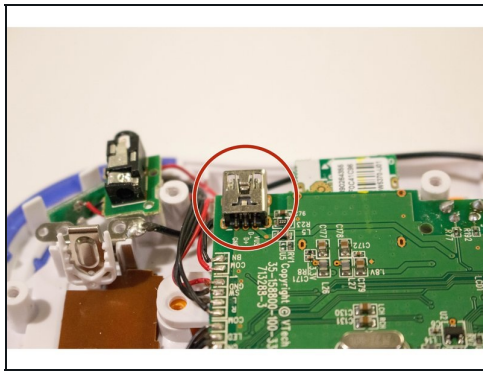
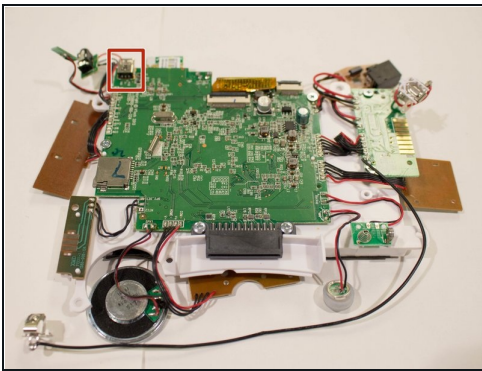
Step 6



- Using the tweezers, remove one battery clip from each corner (four total) of the Vtech InnoTab 3s.
- With the tweezers, unsecure the charging port, headphone port, and the light switch button from the front panel of the device.

⚠ Potential for device damage:
Avoid forceful movements when removing the motherboard to prevent damage of device components.

Step 7 — USB Port



ⓘ The mini USB port is located near the top of the device and is secured by four metal prongs underneath the port.

- Facing the underside of the USB port, solder the metal prongs securing the USB port to the device.

⚠ Avoid forceful movements when soldering to prevent damage of device components and avoid personal injury.

To reassemble your device, follow these instructions in reverse order.

