



VTech Safe and Sound DM111-2 Button Replacement

Replace the buttons on your device if buttons are damaged or if button inputs are unresponsive.

Written By: Melany Colon



INTRODUCTION

Use this guide if buttons are damaged or if button inputs are unresponsive. Button replacement may require replacement of motherboard. While working on this device, make sure that the device is powered off and not plugged into the wall, as this may cause electrostatic shock.



TOOLS:

- [iFixit Opening Tools](#) (1)
- [Phillips #00 Screwdriver](#) (1)



PARTS:

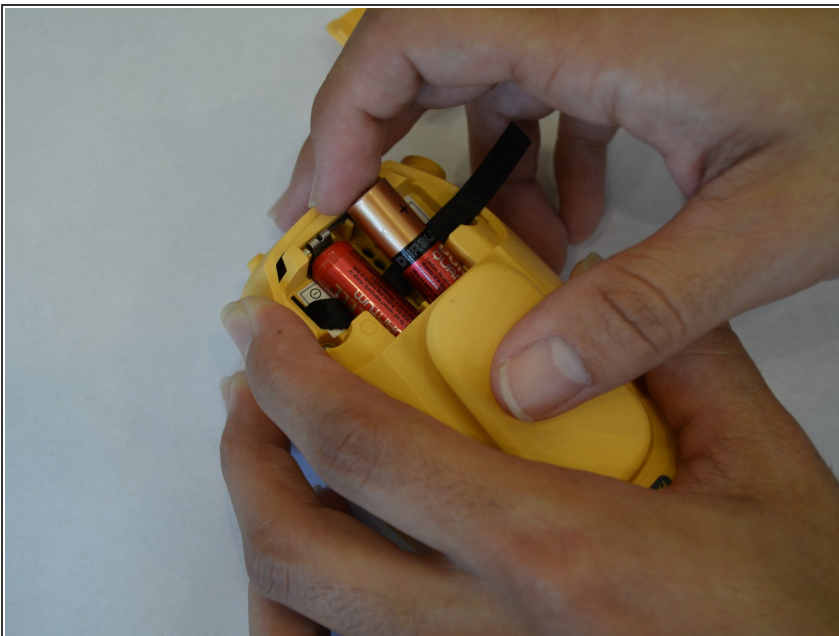
- [VTech Safe and Sound DM111-2 Button](#) (1)

Step 1 — Battery



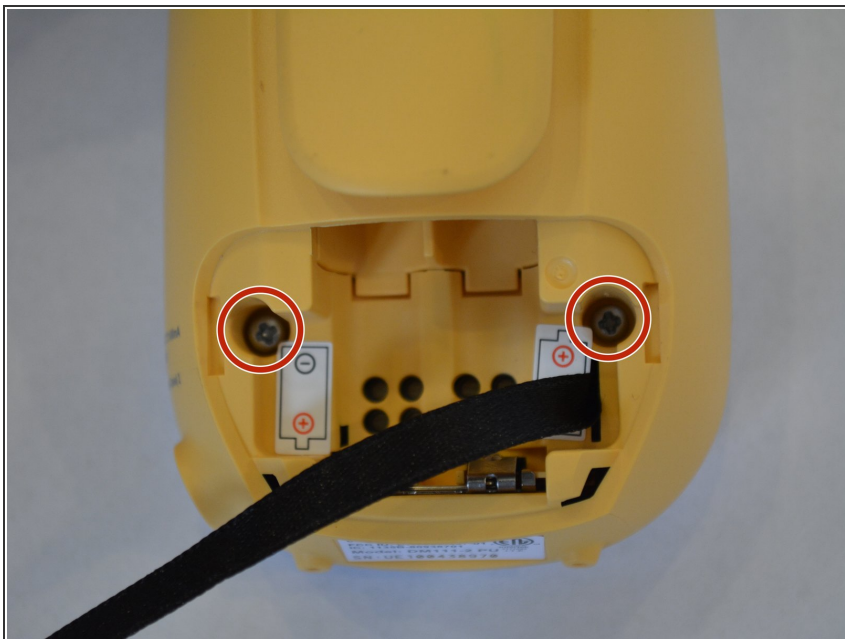
- Expose the battery compartment by removing the lower back cover of the device.
- Do this by holding the back side of the device upside down in your hands and applying pressure to the indented portion with both thumbs.

Step 2



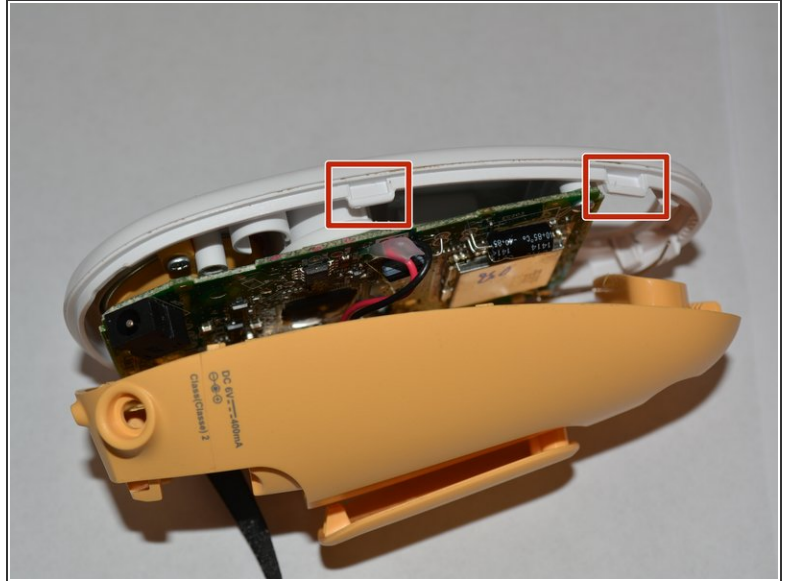
- Once the batteries are exposed, use your index finger to push the battery against the spring and pull up to dislodge the battery.
- ⚠ Make sure to check for battery acid or other corrosive substances before touching the battery. If needed, use latex gloves to avoid skin irritation from battery acid.

Step 3 — Button



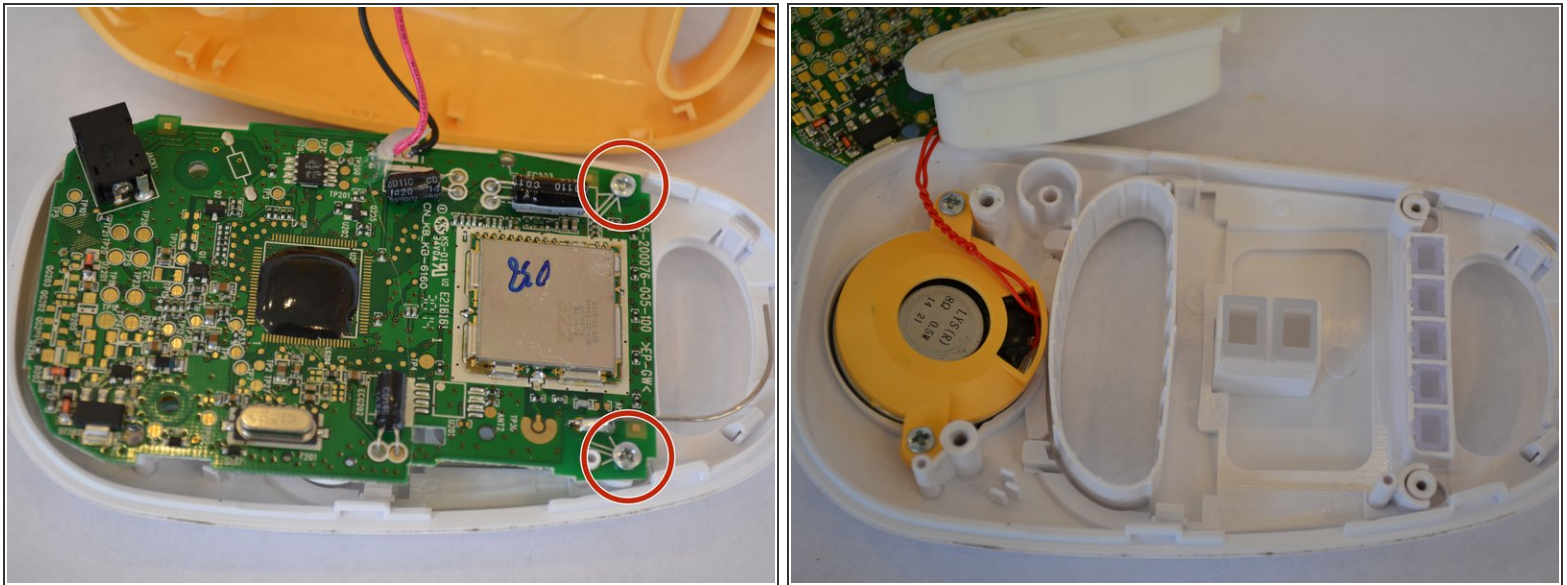
- Remove the two 11.2 mm Philips #00 screws located on either side of the battery slots.

Step 4



- ⓘ The white front covering of the device is held to the yellow back covering by four clips.
- ⚠ When separating the front and back cover, be careful not to separate the red and black wires which connect the batteries to the motherboard.
- Insert the plastic opening tool into the seam between the front and back coverings to create a gap. The tools edge should point toward the front covering. Start from the bottom of the device and slide the tool around the seam until all clips have been separated from the tabs.

Step 5



⚠ When separating the motherboard from the front cover, be careful not to disconnect the two red wires which connect the speaker to the motherboard.

- Remove the two 6.8 mm Philips #00 screws located on the top left and right corners of the motherboard.
- Gently lift the motherboard away from the speaker case.
- Remove old buttons and place new buttons into the button slot.
- i** If button issues continue after button replacement, refer to the motherboard replacement guide.

To reassemble your device, follow these instructions in reverse order.