



How To Fix Overused Screw Holes In Book Shelves

This guide will help you go through the process of reusing or recreating screw holes on a simple but overused bookshelf.

Written By: Alexander Eduardo Esser



INTRODUCTION

Are you about to throw away your bookshelf due to loose screws? Do you want to save money and time? If the old screws do not properly hold the wooden boards together (and you feel they may fall apart soon), it is time to fix your bookshelf in a few simple steps.



TOOLS:

- [C-Clamp](#) (2)

need to be big enough to clamp it to the working table

- [Precision Drill Bits](#) (1)

size of screw

- [64 Bit Driver Kit](#) (1)

size and shape of your screws

- [Circular Saw](#) (1)

- [Screwdriver](#) (1)

- [Ruler](#) (1)

- [Safety Glasses](#) (1)

- [Sand Paper](#) (1)

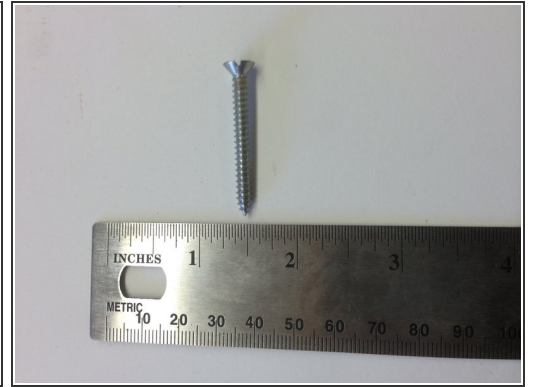
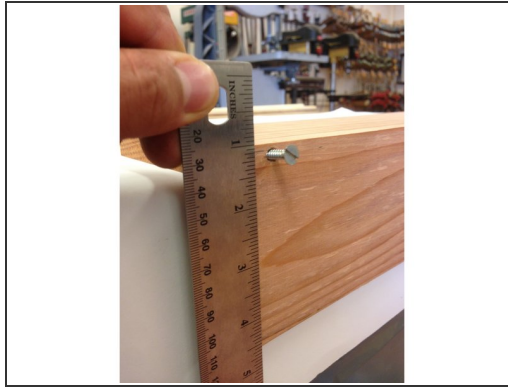
any paper between 100 and 200



PARTS:

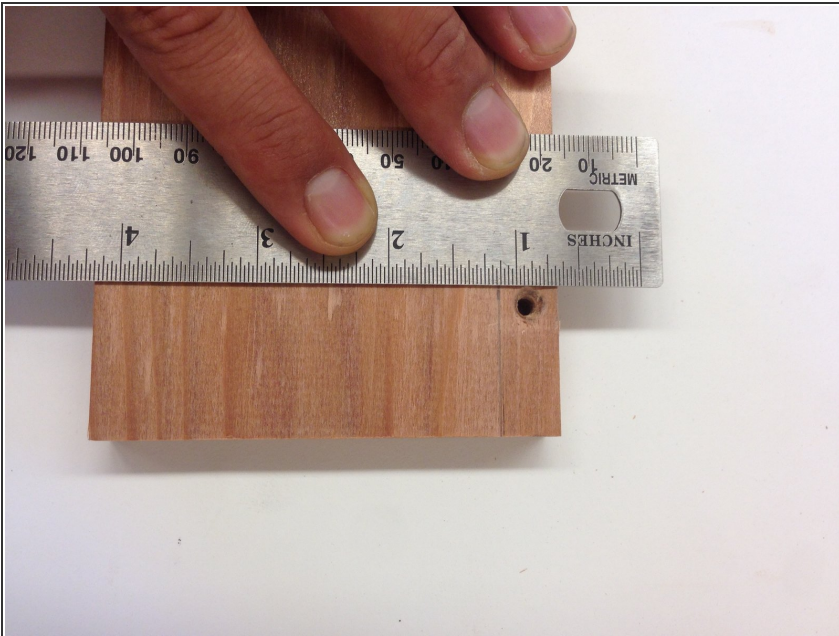
- [Wood Screws](#)—Get the same screws (length) but one size wider (min. +1/32" wider) (1)

Step 1 — New screw holes for better support



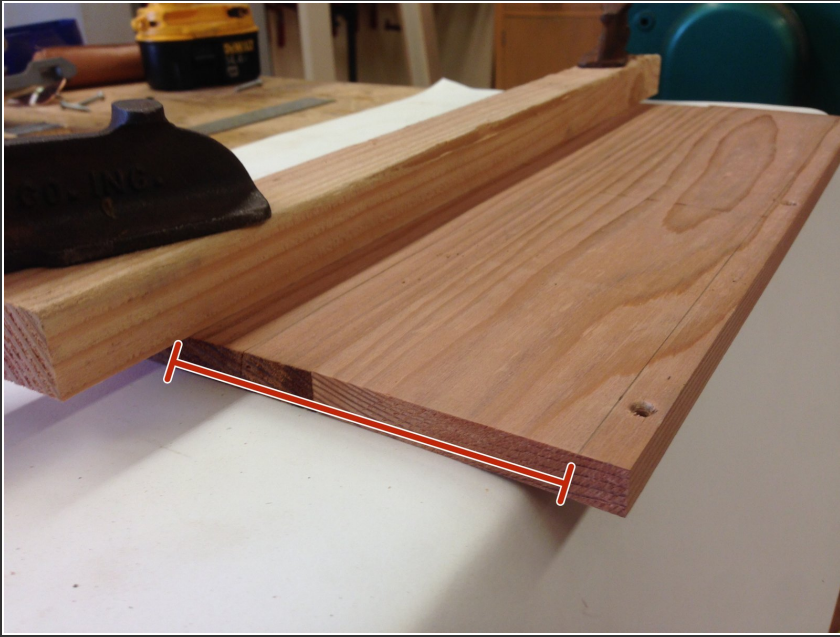
- If the distance between the screw and the edge is less than 1/8", move to Step 2.
- If the distance is more than 1/8", take the wider sized screw (min. +1/32") and use the screwdriver to screw the boards back together.

Step 2



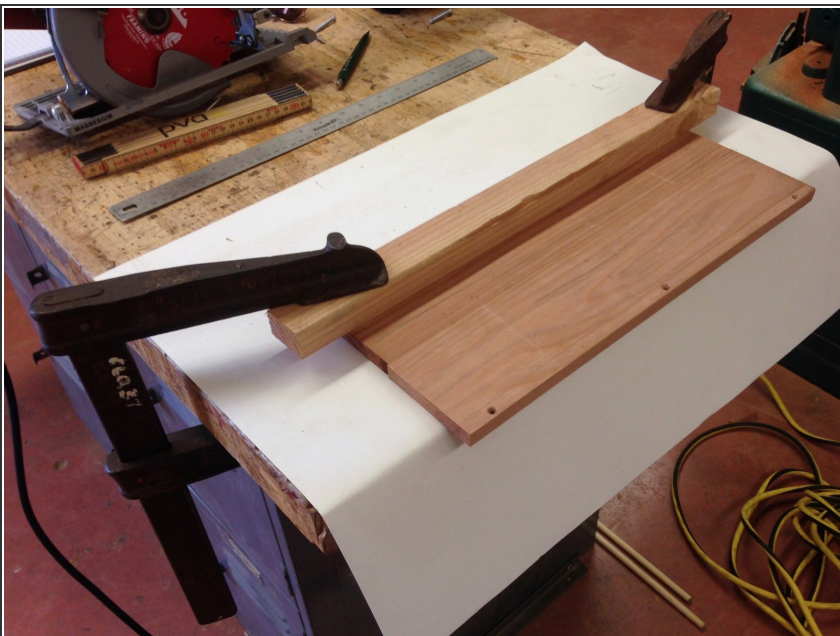
- Unscrew your bookshelf and use the two sideboards to proceed.
- Draw a line along the tablet with a pencil 1/8" below the old screw hole if you are looking at the board horizontally.
- Make sure the line is parallel to the edge.

Step 3



- Measure the exact distance between the outside edge of the circular saw and its blade.
- ① That would be the distance you need between the pencil line and the wooden piece.

Step 4



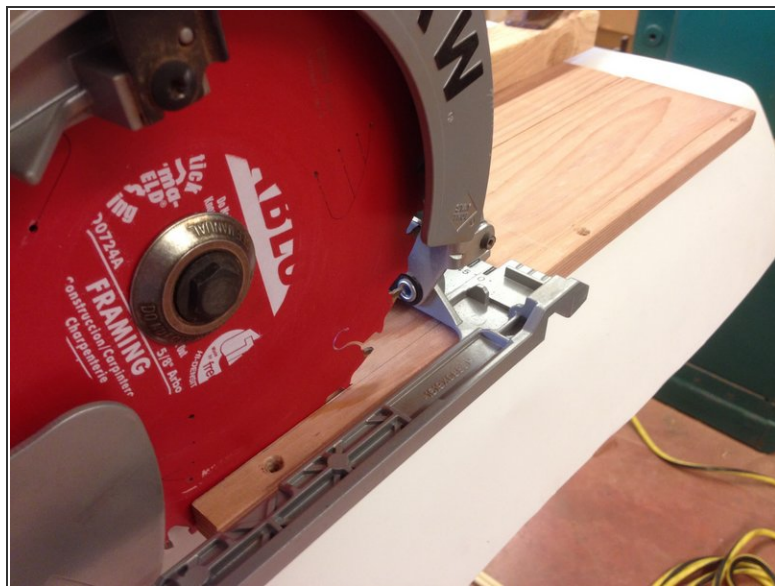
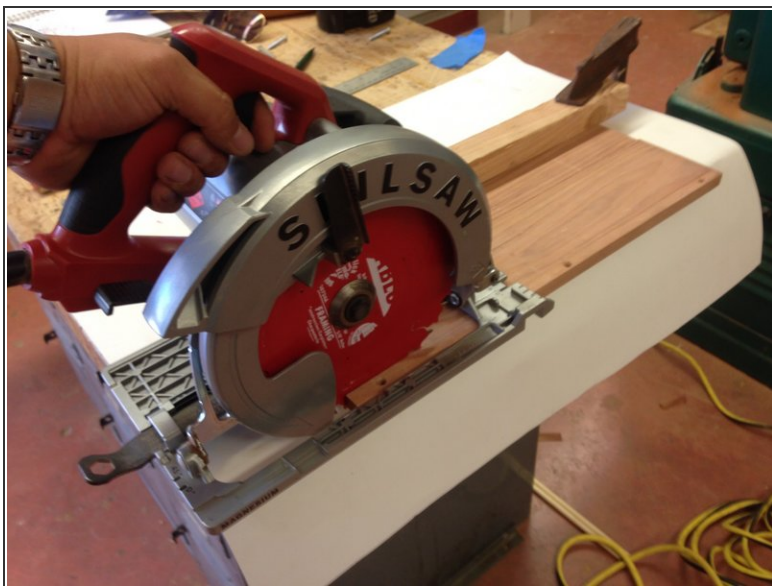
- Clamp the wooden piece on your sideboard; one clamp for each side.
- ① You can use any object which is straight and at least 4 inches longer than the sideboard's width.

Step 5



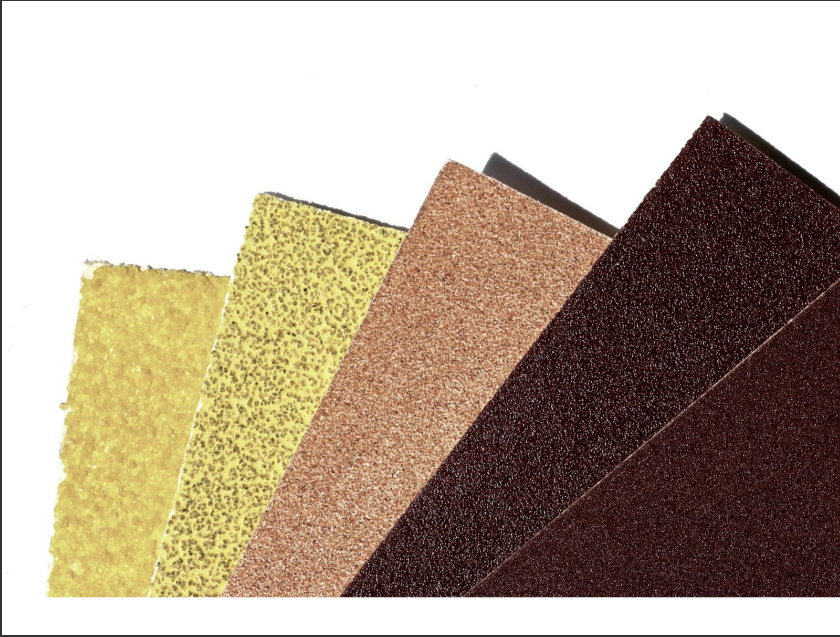
- Put on your safety glasses.

Step 6



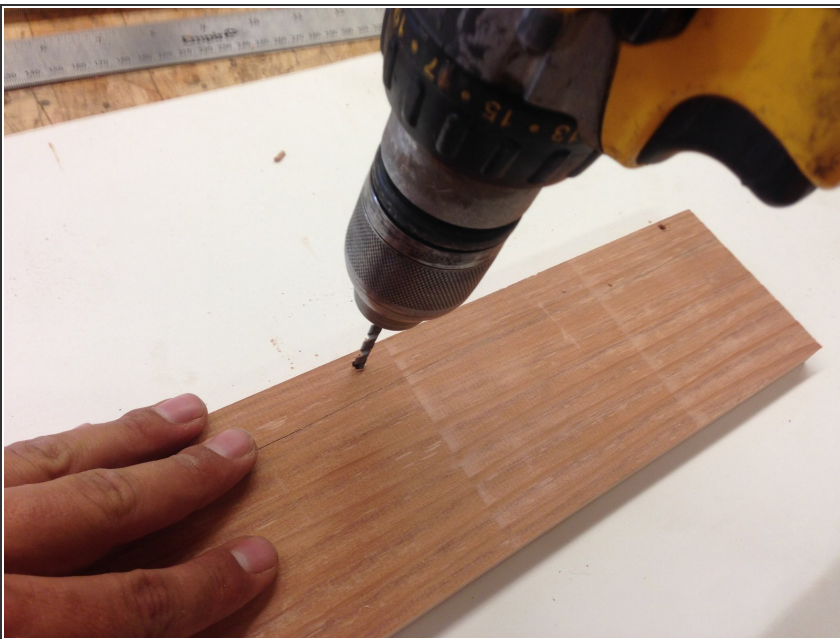
- Cut along the wooden piece. Gently apply pressure on the corner for a clean straight cut.

Step 7



- Use some sandpaper to clean the edges. Do so by rubbing the rough side of the sandpaper to the freshly cut edge until desired look.

Step 8



- Mark the holes at the exact same place they were before, by placing the piece you just cut next to it or measuring each hole.
 - Drill the holes.
- ⚠ Be aware that you will drill through tablet; so put something under it.

Step 9



- Screw the boards together, exactly how they were in the beginning.
- ⓘ Your bookshelf should look now the exact same but a little bit shorter.
- Now you are ready to put back the books into your shelf.

To reassemble your device, follow the instructions that came with the bookshelf, or follow these steps in reverse order.