



LeapPad Ultra Battery Replacement

The purpose of this guide is to replace the...

Written By: Ryan Arredondo



INTRODUCTION

The purpose of this guide is to replace the LeapPad's battery. The battery is essential to receiving any form of functionality from the device. Without a working battery the device is powerless. Once the replacement is finished, be sure to properly dispose of the old battery at appropriate locations such as a batter recycling center.

TOOLS:

[Phillips #1 Screwdriver](#) (1)
[iFixit Opening Tool](#) (1)
[Spudger](#) (1)

PARTS:

[Battery Leapfrog LeapPad Ultra 33200](#)
(1)

Step 1 — Battery



- Remove the barcode covering the two screws on the lower back of the Leap Pad.

Step 2



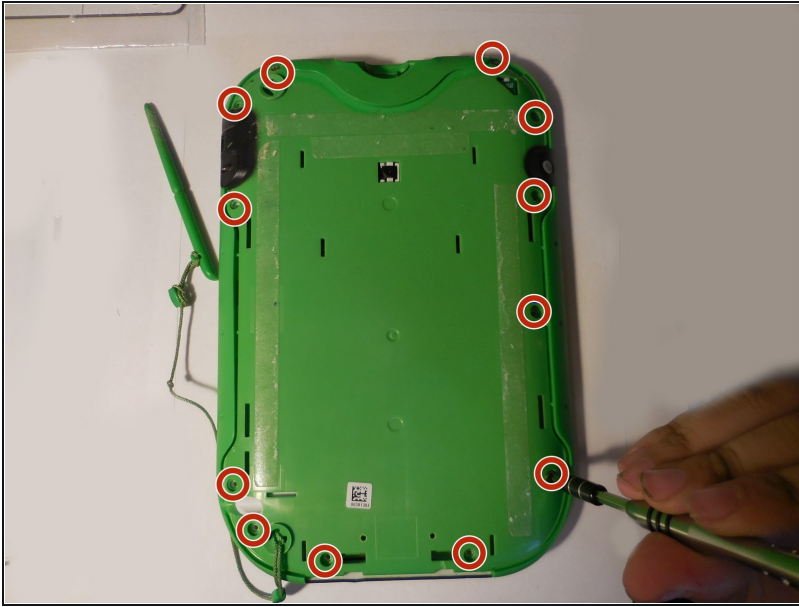
- Remove the two 5 mm screws that were covered by the sticker.

Step 3



- Using a plastic opening tool, pry off the outer protective child proof casing, starting from the bottom.

Step 4



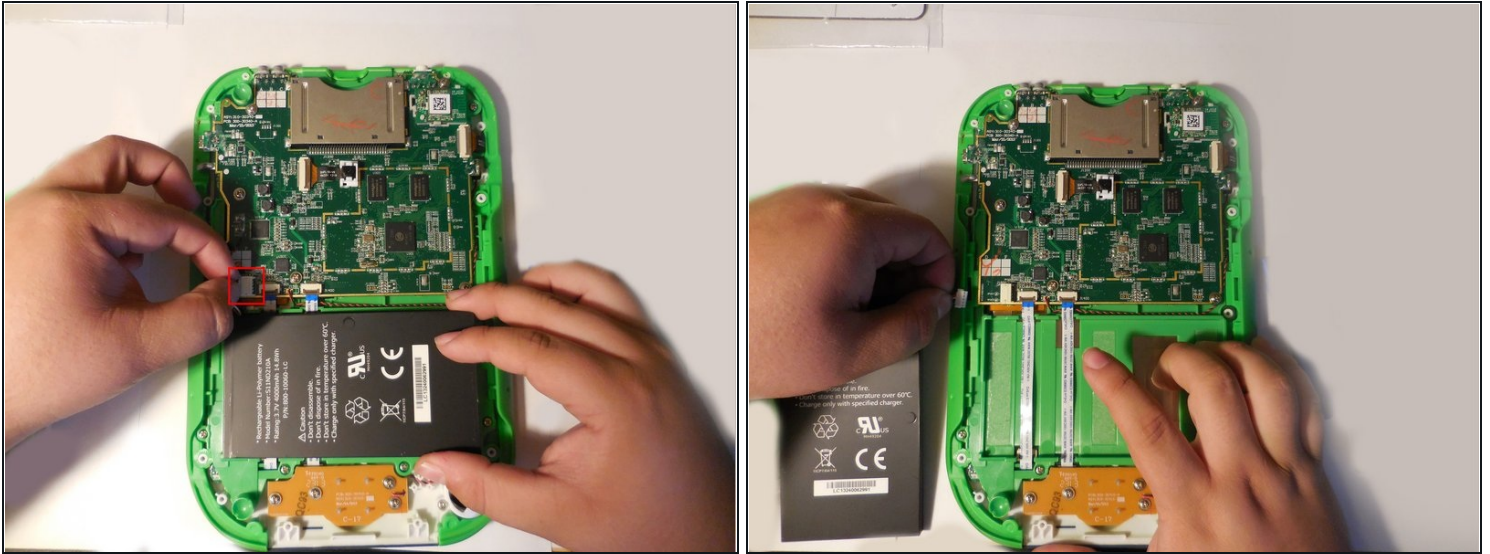
- Remove the 7 mm screw to the right of the cartridge dock, two 8 mm screws in the top left, and the nine 8 mm screws holding the the green shell.

Step 5



- Remove the hard plastic casing, exposing the motherboard and battery.

Step 6



- Disconnect the battery using [tweezers](#) or your fingernails.
 - The battery is glued down, if available put some isopropyl alcohol around the edges of the battery to soften the glue.
 - Gently pry of the battery lose using a spudger or another thin prying tool.
- ⚠ Be careful, damaging/puncturing the battery may cause an explosion.

To reassemble the device, follow these instructions in reverse order.