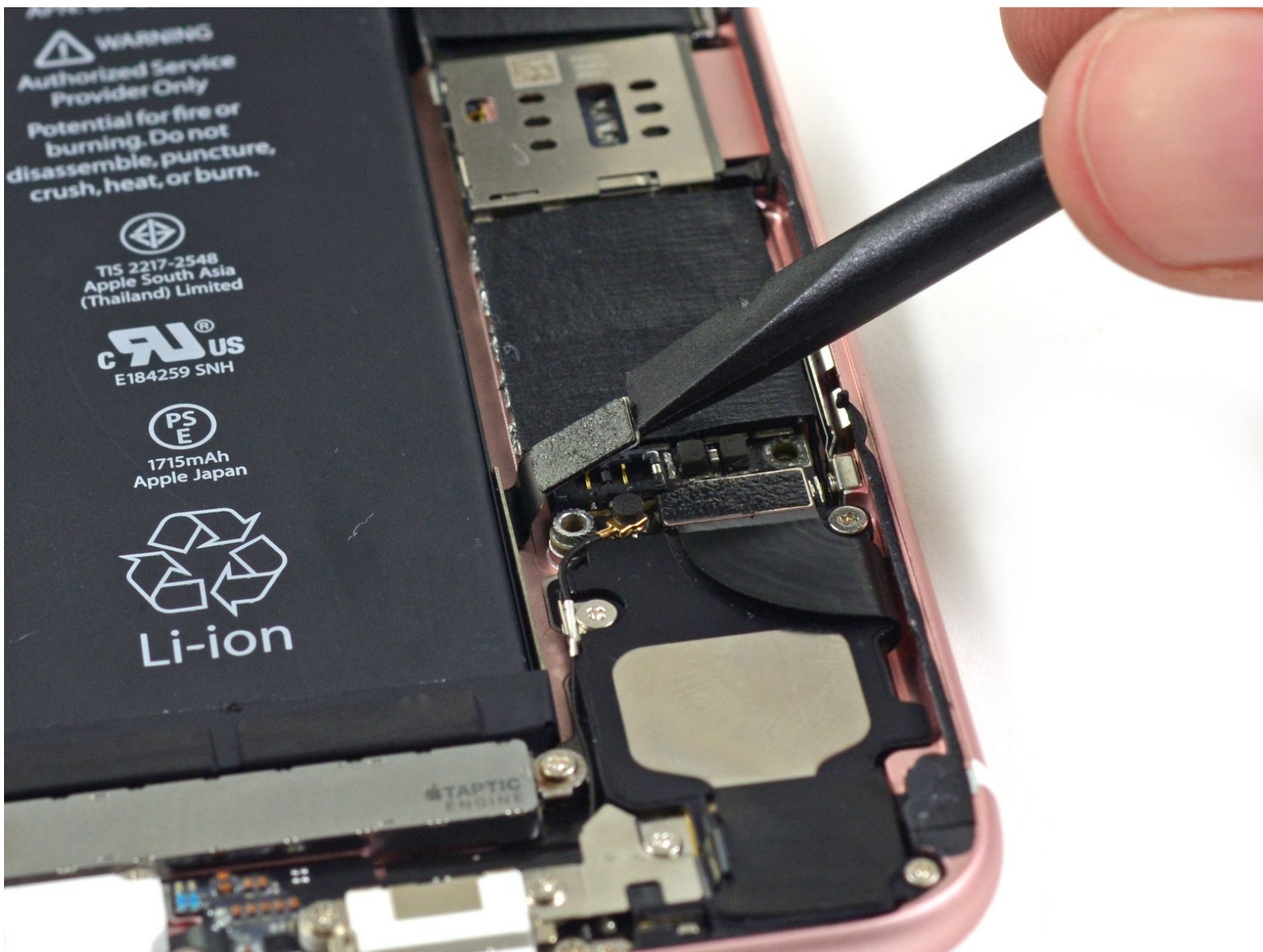




# iPhone 6s Battery Connection

Prerequisite to disconnect the battery

Written By: Sam Goldheart



# INTRODUCTION

Prereq only; disconnect the battery before anything else.

---

## TOOLS:

- [P2 Pentalobe Screwdriver iPhone](#) (1)
  - [Suction Handle](#) (1)
  - [Spudger](#) (1)
  - [Phillips #000 Screwdriver](#) (1)
-

## Step 1 — Battery Connection



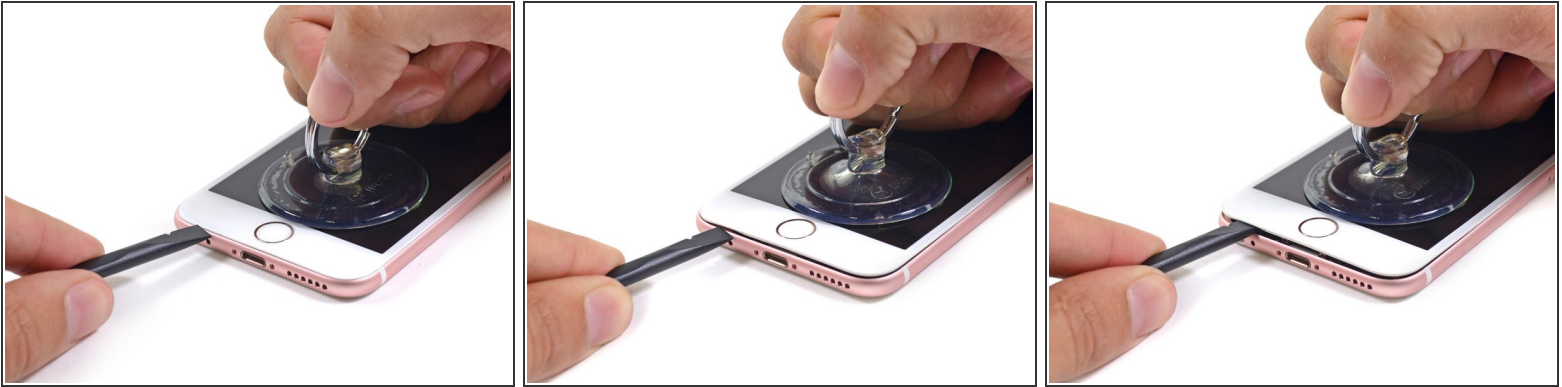
- ⚠ Power off your iPhone before beginning disassembly.
- Remove the two 3.4 mm Pentalobe screws surrounding the Lightning connector.

## Step 2



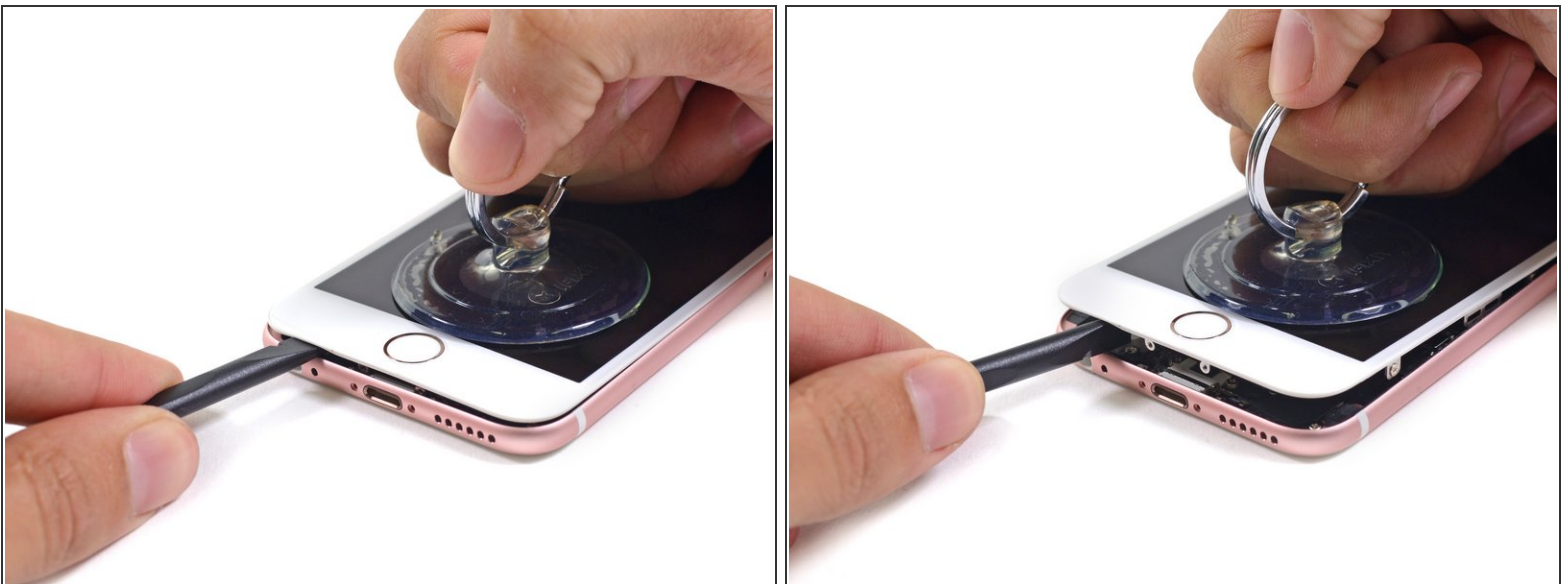
- If you don't have an [iSlack](#), use a single suction cup to lift the front panel:
- Press a suction cup onto the screen, just above the home button.
- ⓘ Be sure the cup is pressed securely onto the screen to get a tight seal.

### Step 3



- ❗ There is a notch on the underside of the display just above the headphone jack that is the safest place to begin prying the phone open.
- Pull up on the suction cup to slightly separate the front panel assembly from the rear case.
- ❗ Take your time and apply firm, constant force. The display assembly is a much tighter fit than most devices and is held down with adhesive.
- Once a small gap has been opened, insert the flat end of a spudger above the headphone jack.

### Step 4



- Twist the spudger to open the gap more and break it free from the adhesive.

Keep pulling up on the suction cup while twisting the spudger.

This document was generated on 2020-11-28 04:36:34 AM (MST).





## Step 5



- Use the edge of a spudger to slice through the adhesive on either side of the phone.

## Step 6




- Use the edge of a spudger to slice through the adhesive on either side of the phone.

## Step 7




- Use the suction cup to open the display, breaking the last of the adhesive.

 Don't open the display more than 90 degrees, as it is still connected at the top by three cables that may break if stretched.

## Step 8



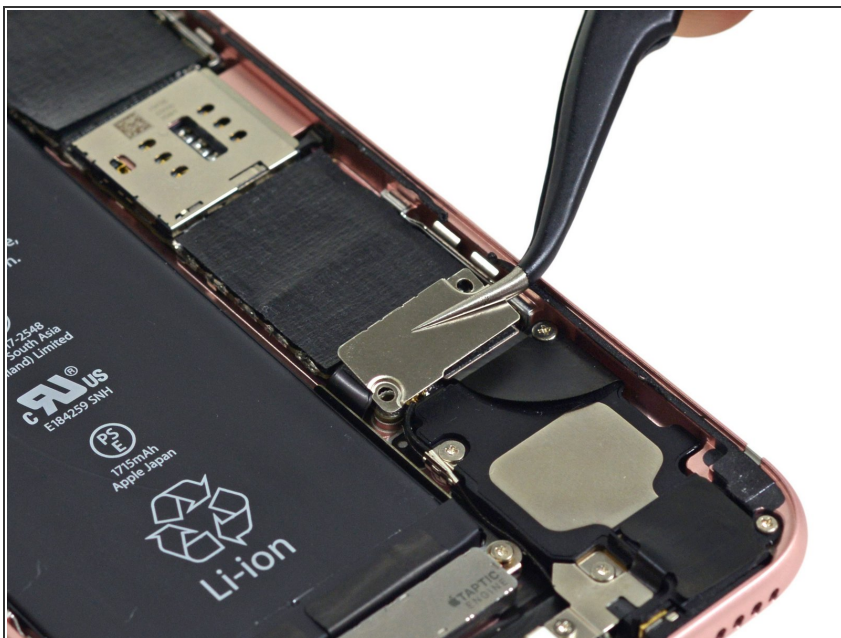
-  Lean the display against something to keep it propped up while you're working on the phone.

## Step 9



- Remove the following screws from the battery connector bracket:
  - One 3.0 mm Phillips #00 screw
  - One 2.3 mm Phillips #00 screw

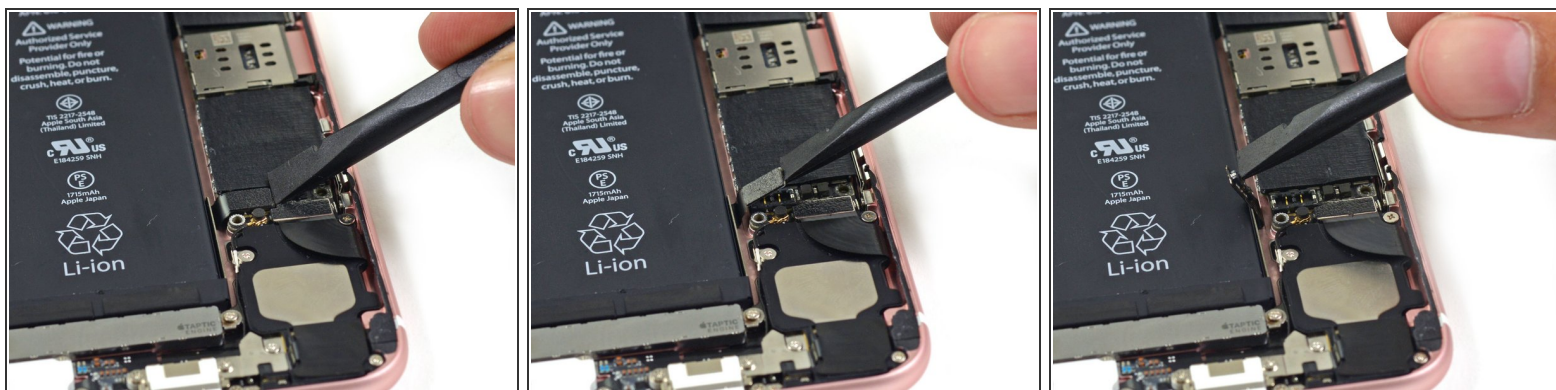
## Step 10



- Remove the metal battery connector bracket from the iPhone.



## Step 11



- Use the flat end of a spudger to disconnect the battery connector from the logic board.
- Push the connector to the side to ensure it doesn't accidentally make contact and power on the phone while you're working on it.

To reassemble your device, follow these instructions in reverse order.