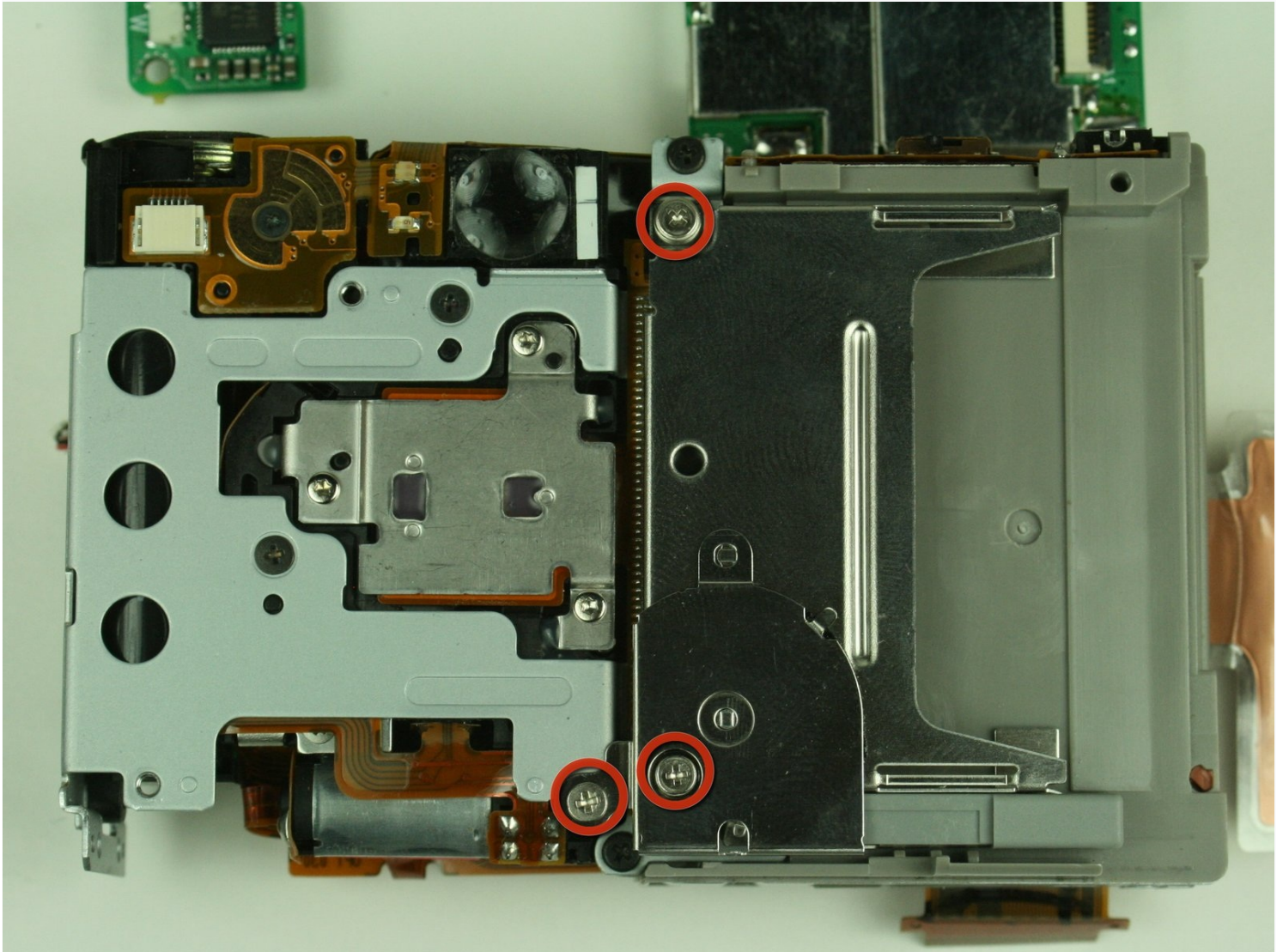




Canon PowerShot S400 SD Card Slot Replacement

This guide provides instructions for the SD...

Written By: Adam Grijalva



INTRODUCTION

This guide provides instructions for the SD card replacement of **The Canon PowerShot S400**. Whether your preference is to archive the SD card for memories or switch it out for a new one, this purposeful guide walks you through the replacement process step by step. Beginning with which screwdriver to use through removing the memory card, the maximum replacement process is estimated to be 35 minutes. No prior knowledge is necessary to understand the instructions for the SD card replacement guide.

🔧 TOOLS:

Phillips #0 Screwdriver (1)

Tweezers (1)

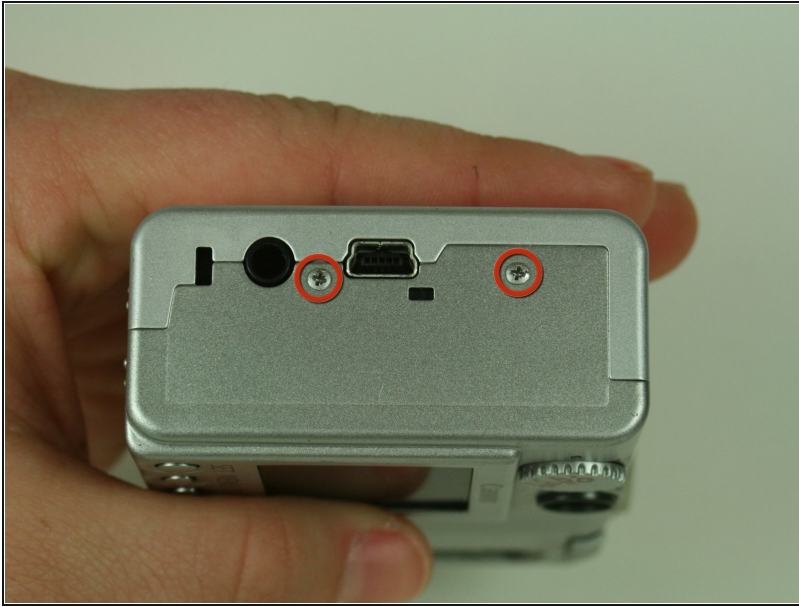
Step 1 — SD Card Slot



① Unless otherwise stated, a #00 philips screwdriver will be used to remove screws.

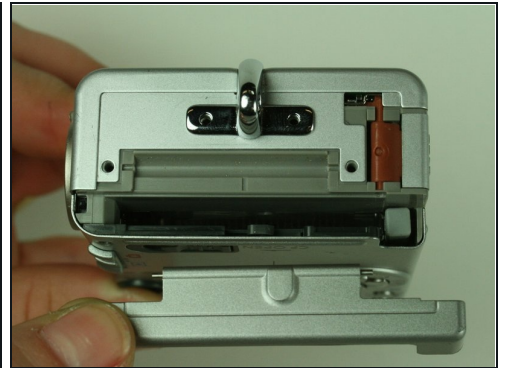
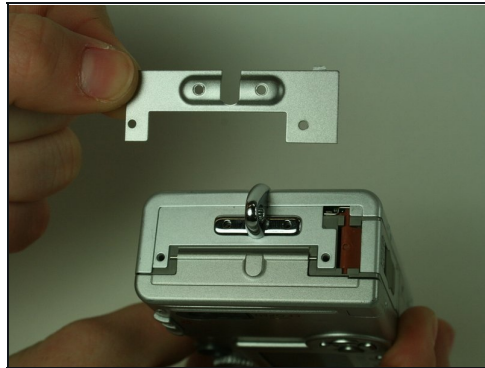
- Remove the 4.75mm screw located in the top right corner of the backside of the camera.
- Remove the four 4.75mm screws located on the bottom of the camera.

Step 2



- Remove the two 4.75mm screws located on the right side of the camera.(the side with the USB adaption plug)

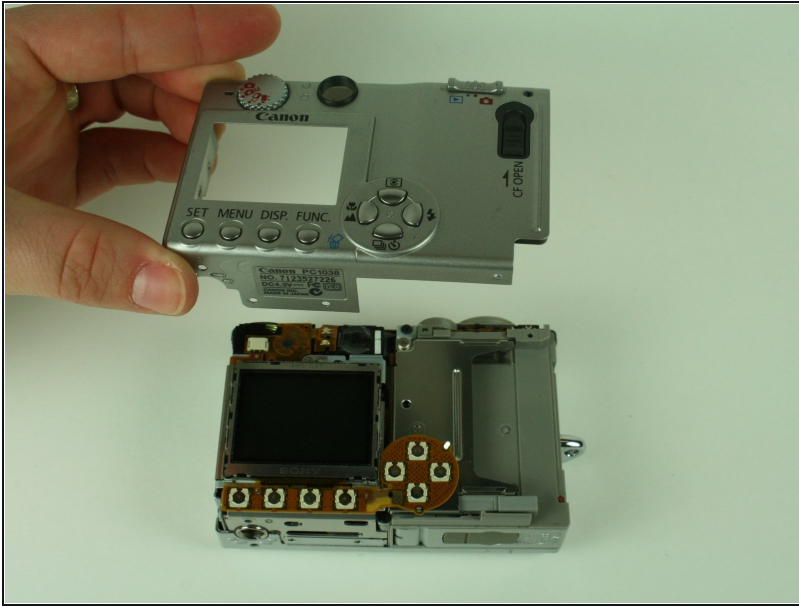
Step 3



- Remove the four 4.75mm screws on the left side of the camera.

① This will release two small metal plates. Remove these plate.

Step 4



- Only remove the back case.
- The memory card is held in the metal case located to the right of the LCD screen.
- Remove the stuck memory card.

⚠ If you still cannot remove the stuck memory card, proceed with further instructions. If you could remove the memory card then you are done

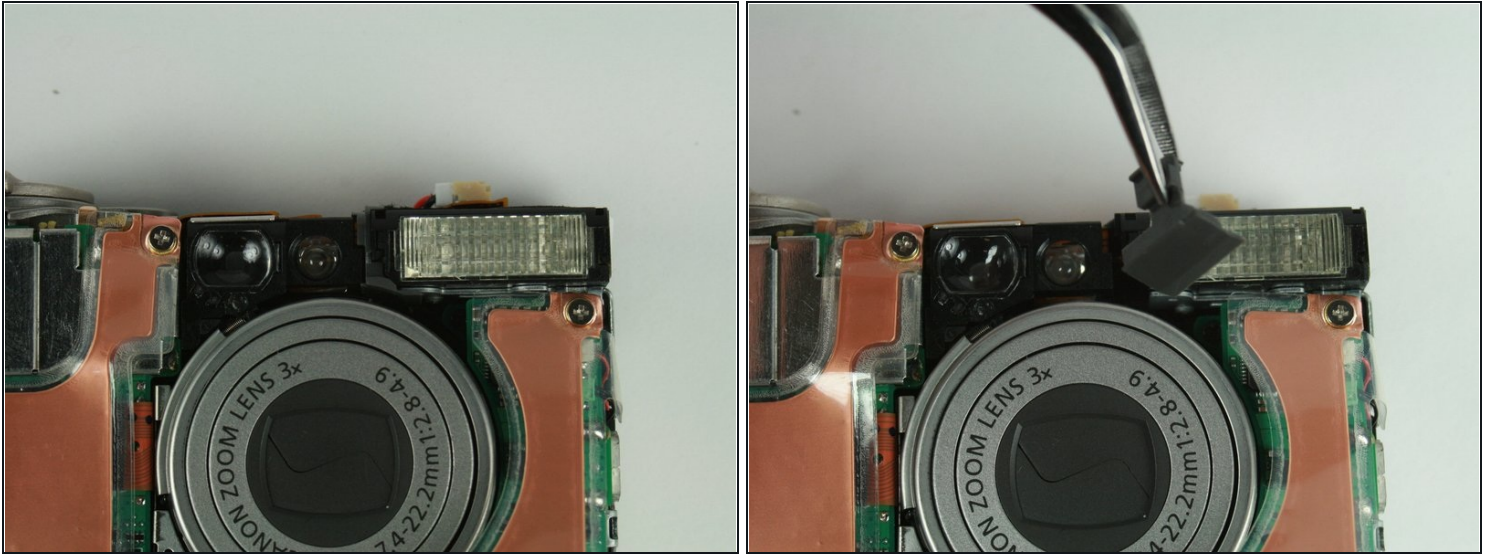
Step 5



⚠ There is a small black plastic piece that sits above the lens underneath the camera case. This plastic piece may fall out when you remove the cases; recover the piece and save it.

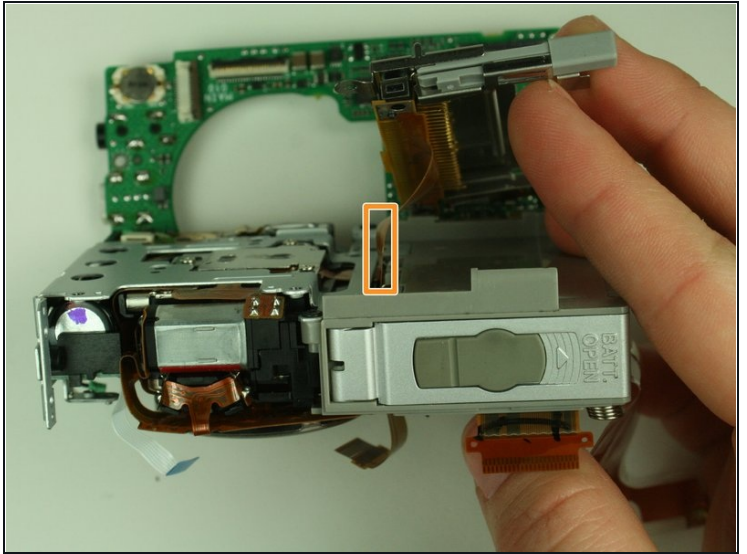
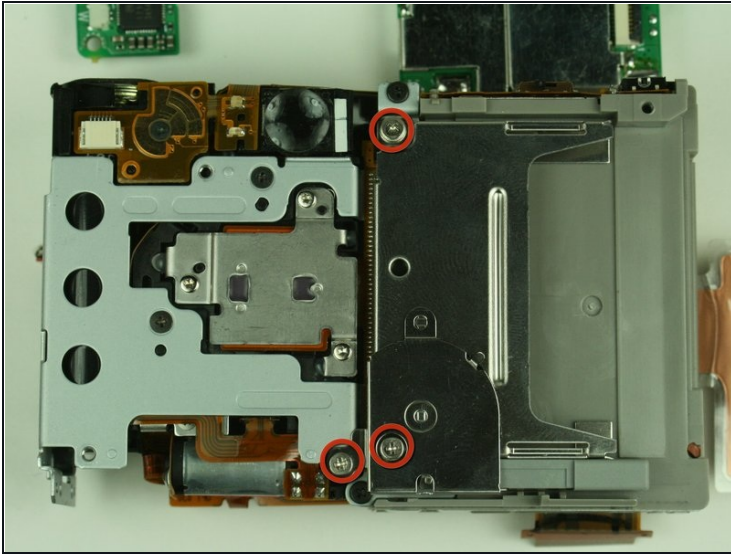
- Separate the front casing from the camera

Step 6



- If the small plastic piece described in the previous step did not fall out, remove it now. The piece is located in a small gap above the lens and to the left of the flash.
- ⓘ Removing this piece may require the use of [tweezers](#).

Step 7



- Locate and remove the three 3.45mm screws on the backside of the camera securing the CF card slot.
- Do not remove ribbon cable. It is not necessary to remove
- Without removing the ribbon cable, gently remove the memory card.

To reassemble your device, follow these instructions in reverse order.