



Nikon Coolpix S210 LCD screen Replacement

This guide shows how to replace the LCD screen in the Nikon Coolpix S210.

Written By: Mallory Arend



INTRODUCTION

You will be removing the back casing of the camera. You will need a Phillips #00 screwdriver and a spudger. You will then be directed to remove screws.

TOOLS:

- [Phillips #00 Screwdriver](#) (1)
 - [Spudger](#) (1)
-

Step 1 — Battery



- Place thumb on the battery cover panel on the bottom of the device.
- Slide the panel to the right away from the camera.

Step 2



- Slide the orange latch outward towards the corner of the camera.
- The battery should pop out.
- Remove the battery and reattach the cover.

Step 3 — Back Case



- After removing the battery, unscrew the four 3.10mm screws on the side opposite the buttons.

Step 4



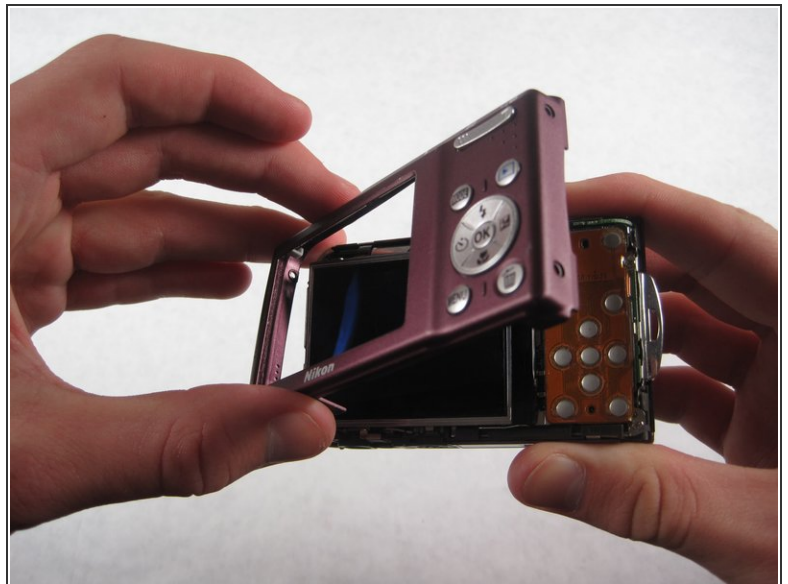
- Unscrew the three 4.05mm screws on the bottom of the camera below the lens.

Step 5



- Unscrew the two 4.05mm screws on the side next to the buttons.

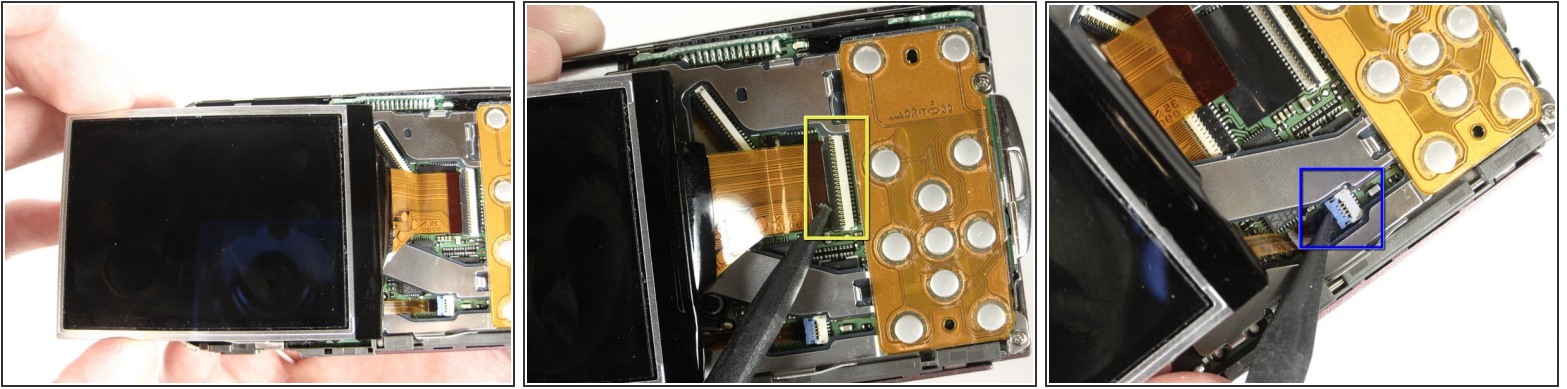
Step 6



- Gently wedge the flat end of the spudger between the back case and the wrist-strap mount.
- ⓘ The wrist-strap mount is the thin metal piece on the side of the camera. Your camera may have the wrist-strap attached, but you will not need to remove it to continue.
- Carefully pry the back case away from the camera and then gently lift it off.

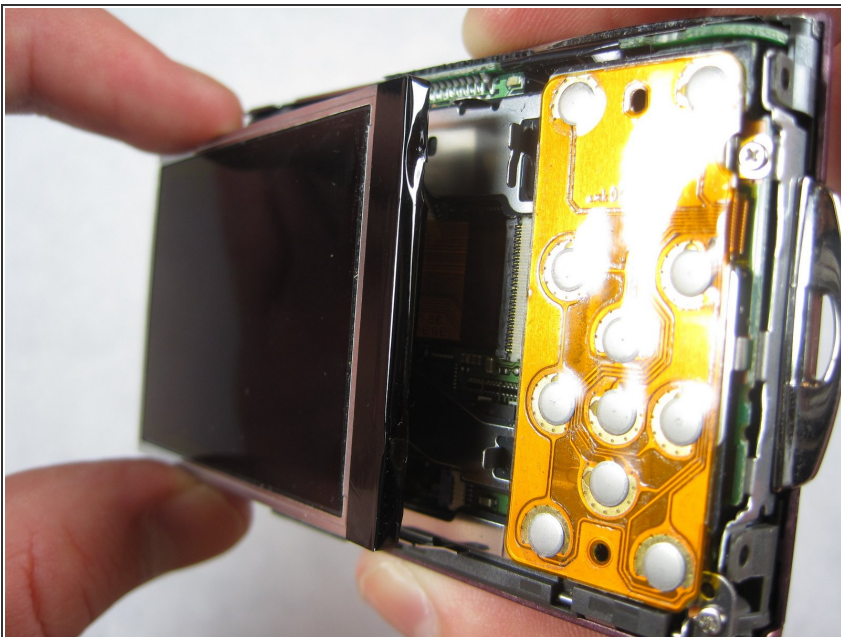
This document was generated on 2020-11-28 02:08:56 AM (MST).

Step 7 — LCD screen



- ✦ Having removed the back case, the LCD screen should be sitting loosely on the camera, attached only by a wide ribbon and a narrow ribbon.
- i The ribbons are connected to and held in place by small plastic latches.
 - To remove the wide ribbon, gently pry the spudger underneath the black plastic latch where the ribbon connects and lift up. The ribbon should slide out easily.
 - Repeat the same process with the smaller ribbon, this time looking for a light blue latch.

Step 8



- Gently remove the LCD screen.

To reassemble your device, follow these instructions in reverse order.