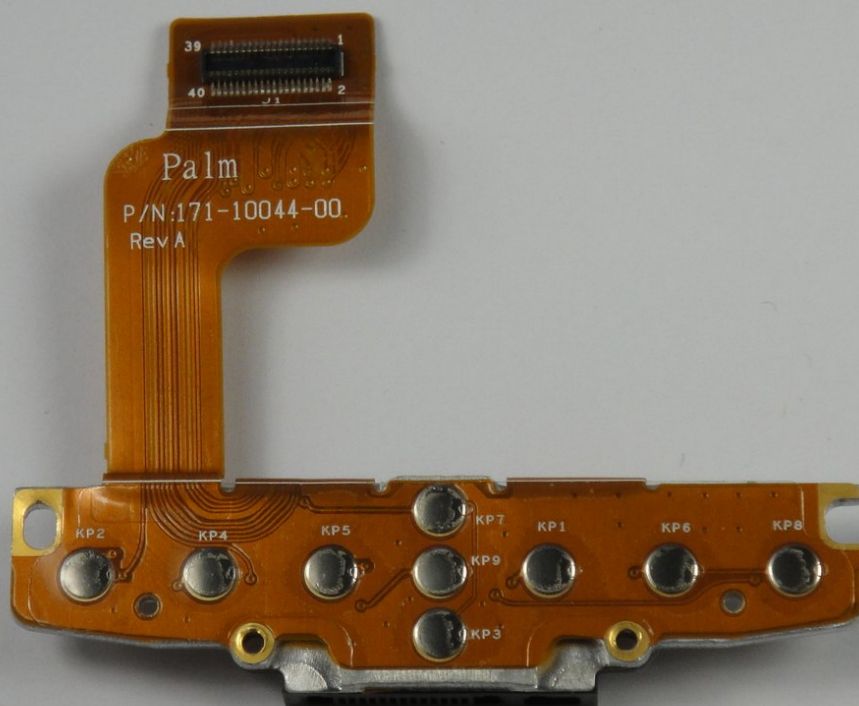




Palm TX Buttons and Connector Assembly Replacement

Replace the buttons and connector assembly.

Written By: Spencer Lewson





TOOLS:

- [iFixit Opening Tools](#) (1)
- [Soldering Iron](#) (1)
- [T5 Torx Screwdriver](#) (1)

Step 1 — Back Panel



- Orient the device so that the display faces forward.
- Remove the stylus from the right side.

Step 2



- Turn over the device so that the back panel faces forward.
- Use a T5 Torx screwdriver to remove the four 6.35mm corner screws.

Step 3



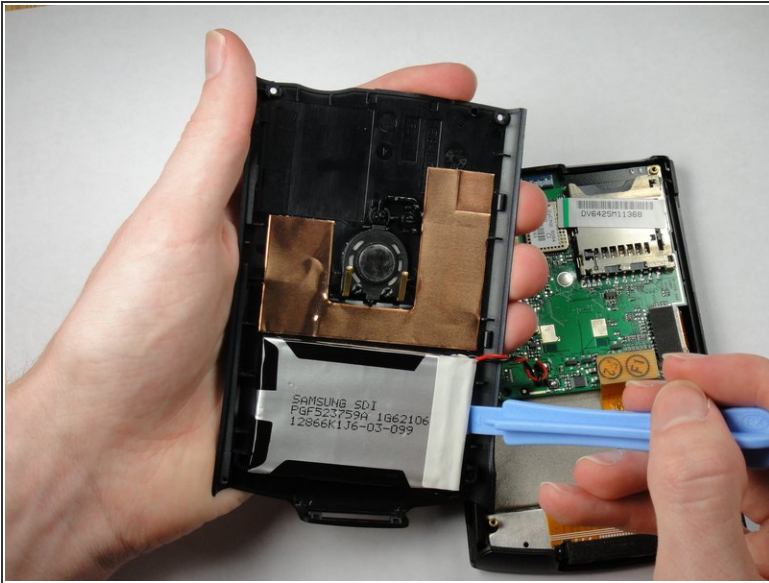
- Rotate the device so that the display faces forward.
- Insert a plastic opening tool with the angled tip pointing downward into the crevice on the left side of the device.
- Pry along the crevice to loosen the back panel.
- Repeat this process for the right side.

Step 4



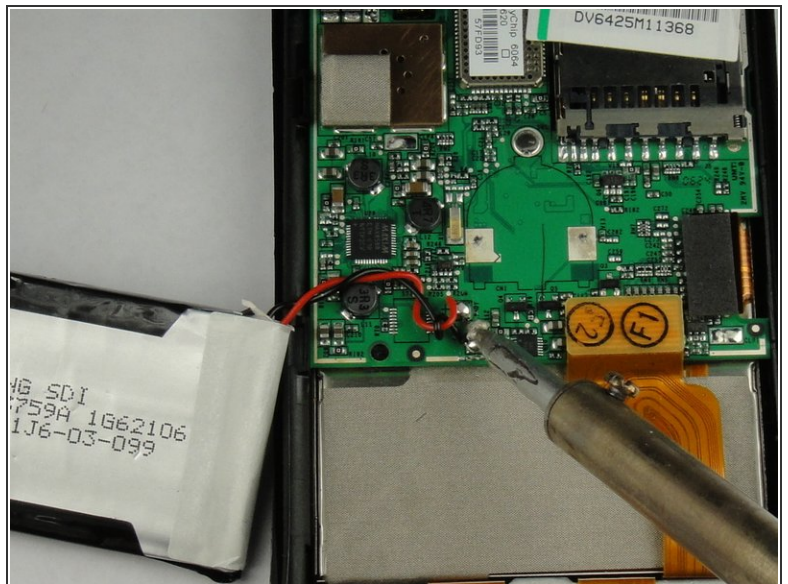
- Carefully pry the back panel to open the device.
- ⚠ Be careful not to break the wire that connects the battery pack to the motherboard.
- ℹ When reassembling, snap the back panel back into place and then insert the top cover.

Step 5



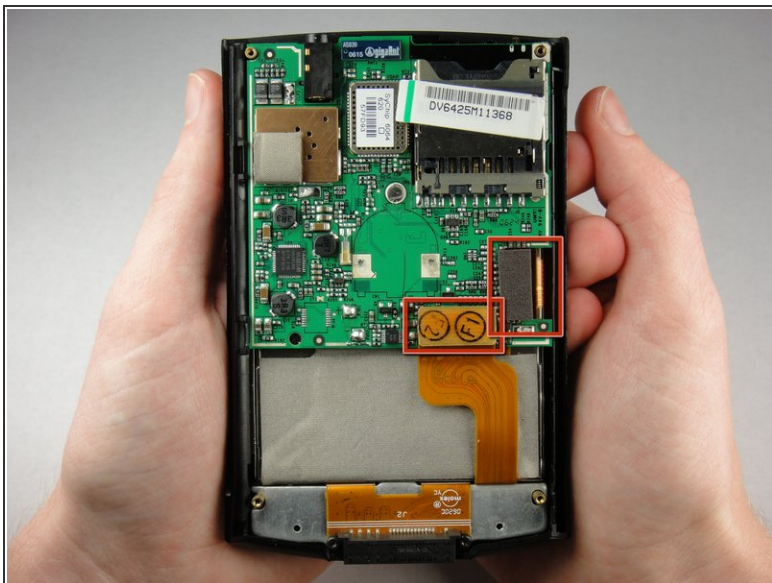
- Use a plastic opening tool to peel the battery pack from the back panel.
- ❗ The battery pack is glued to the back panel so removing it may require considerable effort.

Step 6 — Battery Pack



- Use a soldering iron to disconnect the battery wires from the motherboard.
- For soldering instructions, you can view the [Soldering Guide](#).

Step 7 — Motherboard



- Pull straight up on the ribbon cables located on the bottom right of the motherboard to disconnect them.

Step 8



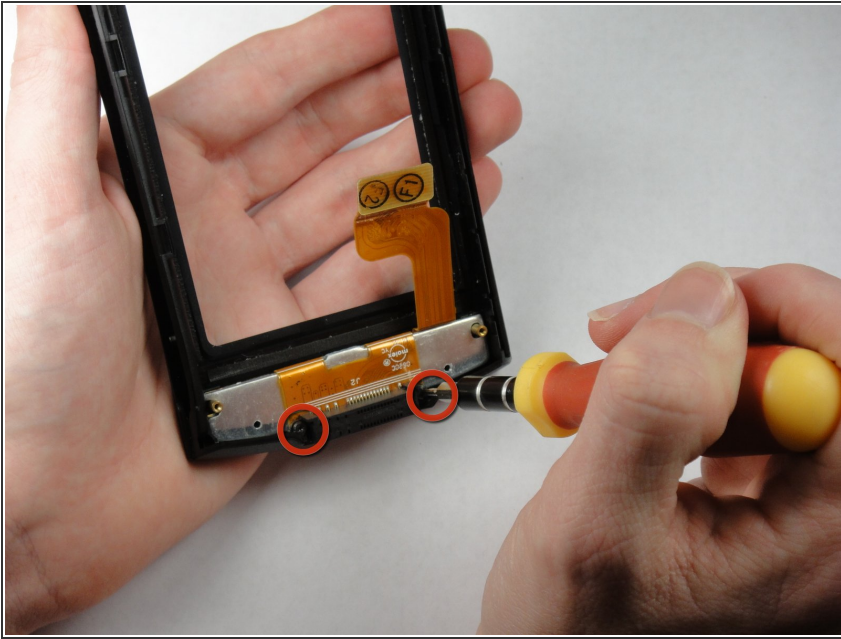
- Lift the mother board out of the device.
- ⓘ A weak adhesive attaches the motherboard to the device.
- ⓘ The red wire in the picture will not be attached to your device at this point.

Step 9 — Display



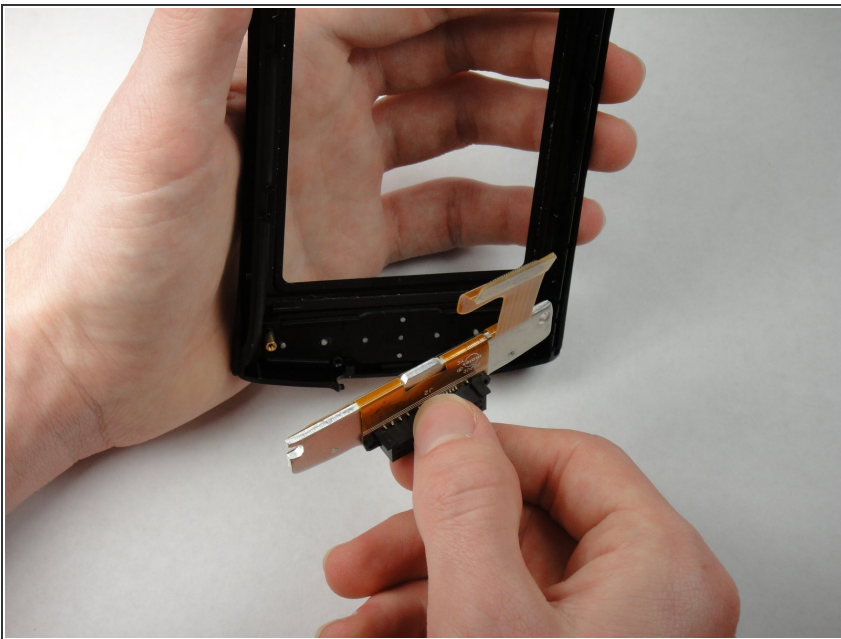
- Orient the device sideways, as shown in the picture.
- Lightly push the front of the display to separate it from the front panel.
- ⓘ The battery in the picture will not be attached to the device at this point.

Step 10 — Buttons and Connector Assembly



- Use a T5 Torx screwdriver to remove the 7.75mm screws at the bottom of the device.
- ⓘ It may take some manipulation to remove the screws.

Step 11



- Lift the button and connector assembly from the front panel.

To reassemble your device, follow these instructions in reverse order.