



# Sharp Aquos LC13B2UA LCD Replacement

Written By: Robert Hobson





## TOOLS:

- [Phillips #2 Screwdriver](#) (1)
-

## Step 1 — Stand



- Place the TV face down on a flat smooth surface as to not scratch the screen.
- Using a Phillips #2 screwdriver remove the four 8mm screws attaching the stand to the TV.

## Step 2



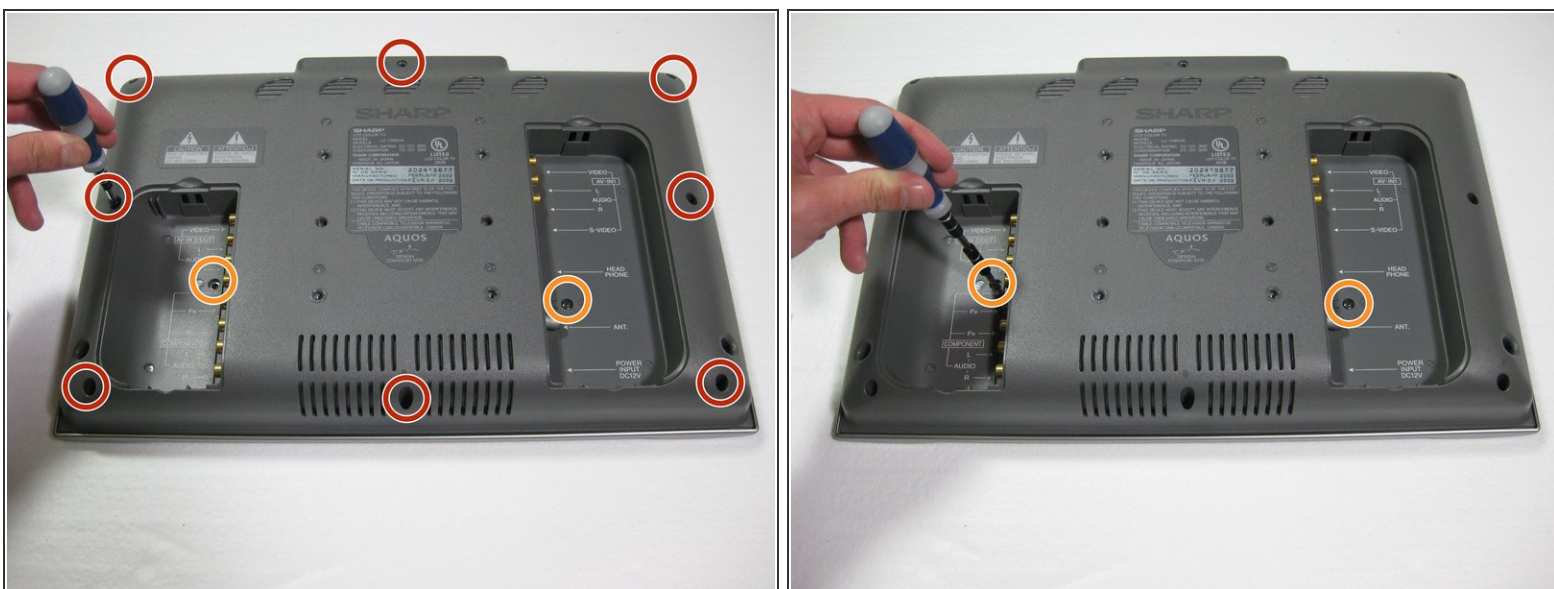
- Lift the stand off the television.

## Step 3 — Back Case



- Remove the two back panels by prying them out with your hands.

## Step 4



- Using a Phillips #2 screwdriver, remove the eight 6mm Phillips screws located around the edge.
- Using a Phillips #2 screwdriver, remove the two 6mm Phillips screws located near the inputs.

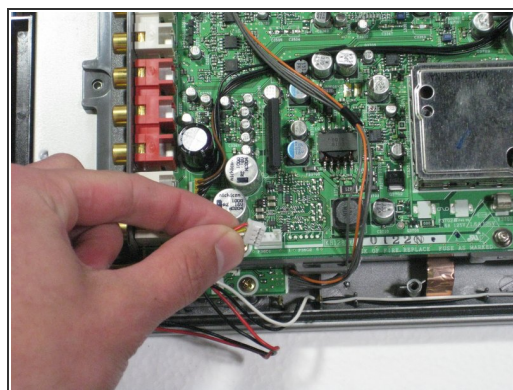
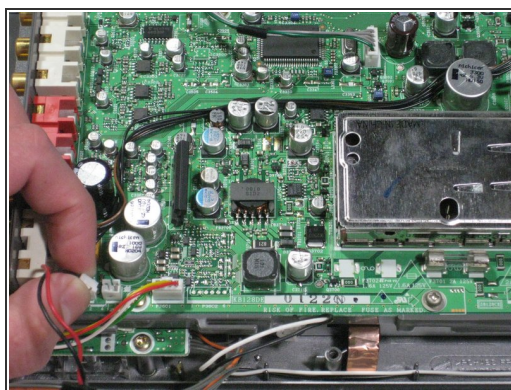
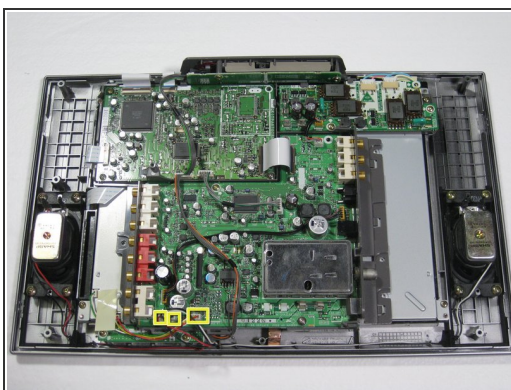


## Step 5



- Using your hands, gently lift and remove the back case of the television.

## Step 6 — Motherboard

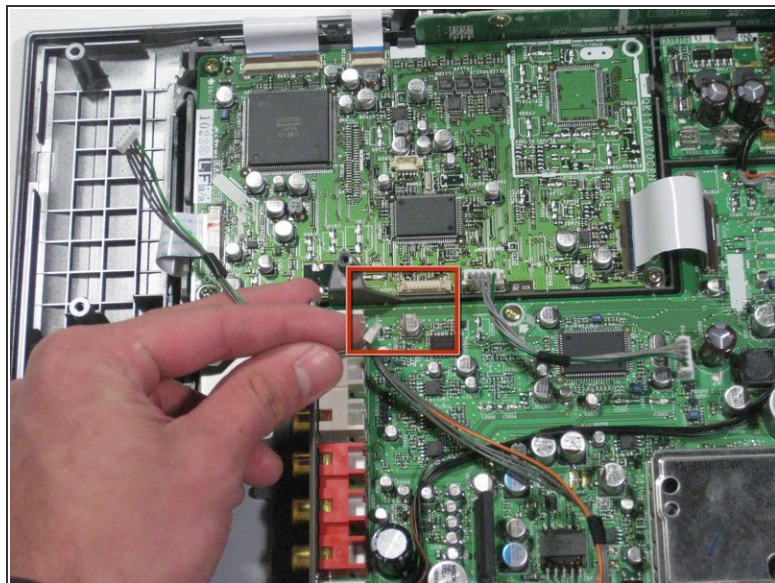
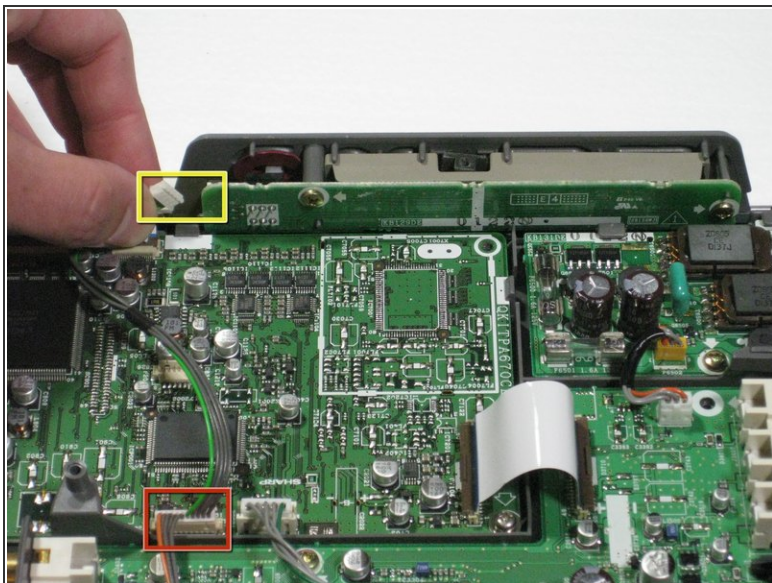


- Remove the two speaker cables and the connector from the circuit board by pinching the plastic connectors and firmly pulling up.

**⚠ Pull on the plastic part of the connector, even though it may seem easiest to pull on the wires.**

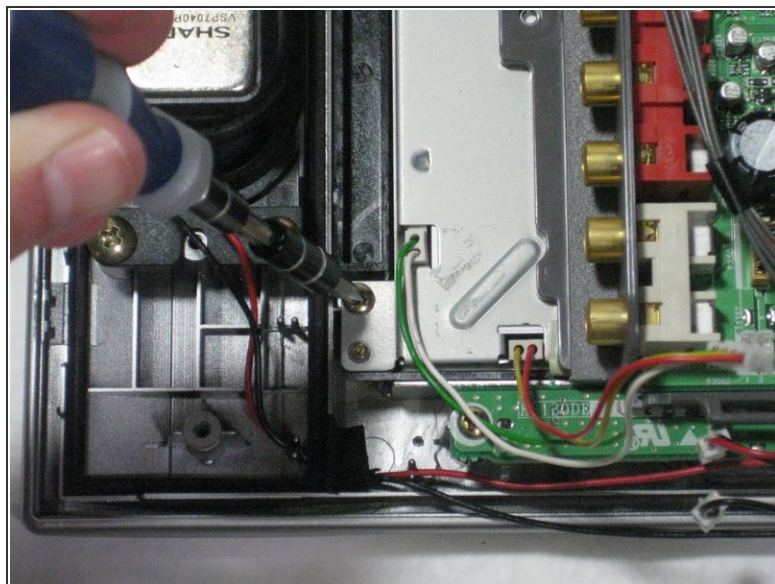
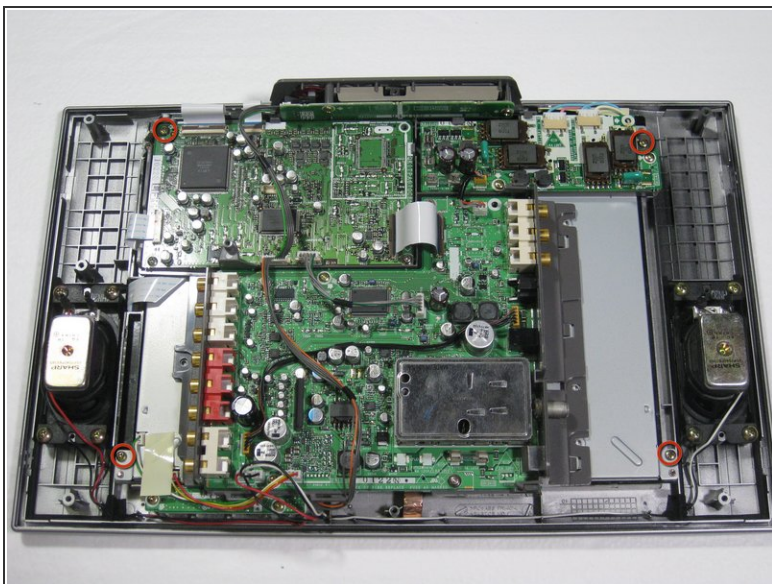


## Step 7



- Remove the green and gray power connector from the side of the buttons panel at the top of the television.
- Remove the green/gray to orange/gray connector from the center of the circuit board.

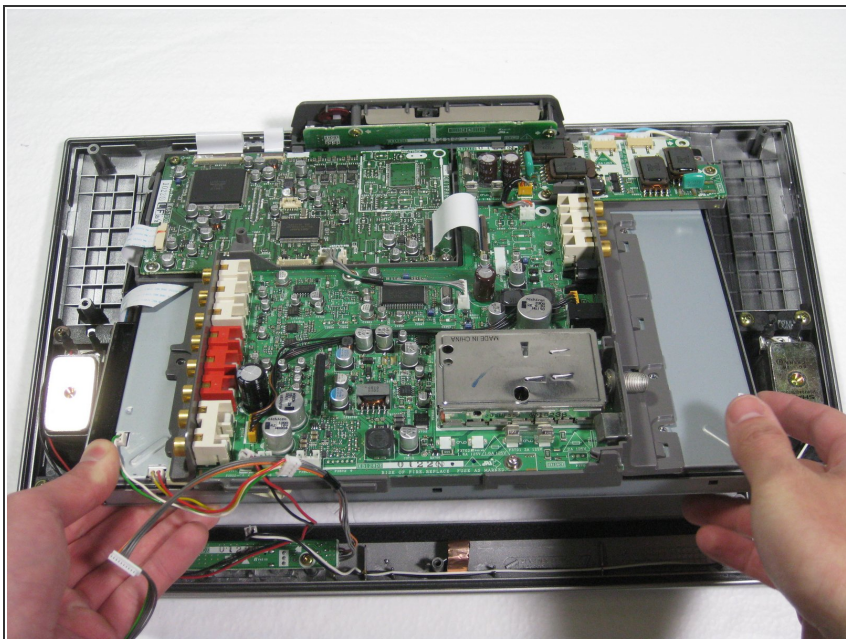
## Step 8



- Remove the four 5mm Phillips screws attaching the LCD and circuit board to the front case.

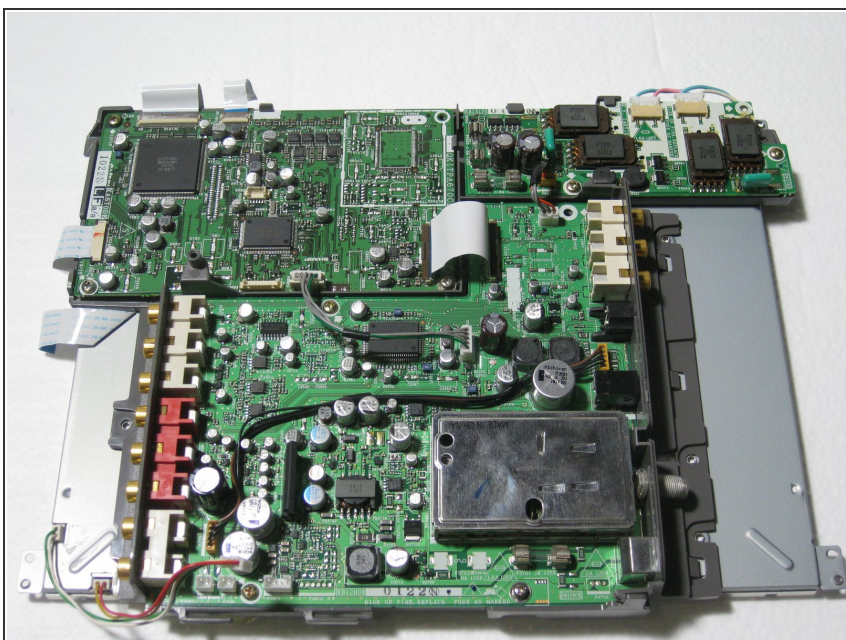


## Step 9



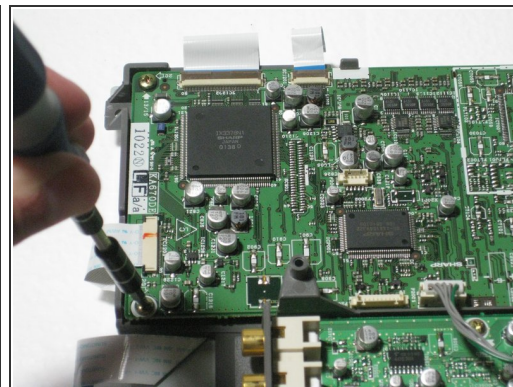
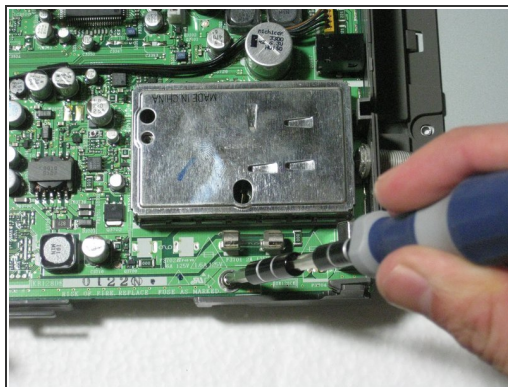
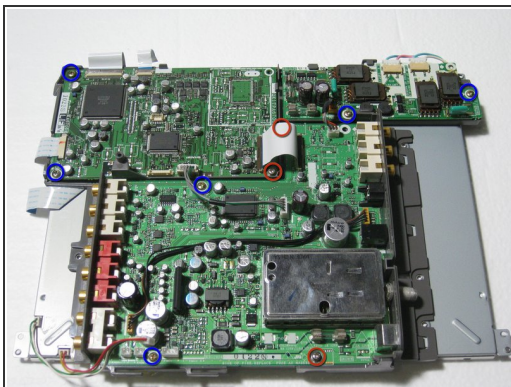
- Lift the circuit board/LCD block from the case by lifting the near side of the circuit board and sliding it under the button frame.

## Step 10 — LCD



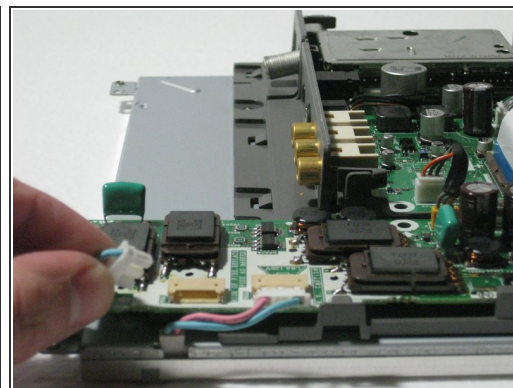
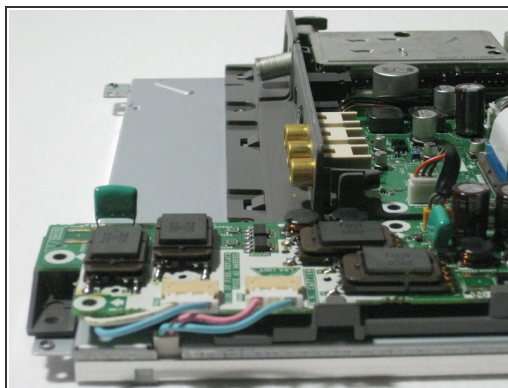
- Flip the LCD/circuit board so that the circuit board faces up.

## Step 11



- Remove the three 5mm Philips screws attaching the circuit board to the LCD.
- Remove the five 6mm Phillips screws from the edges of the circuit board attaching it to the LCD.

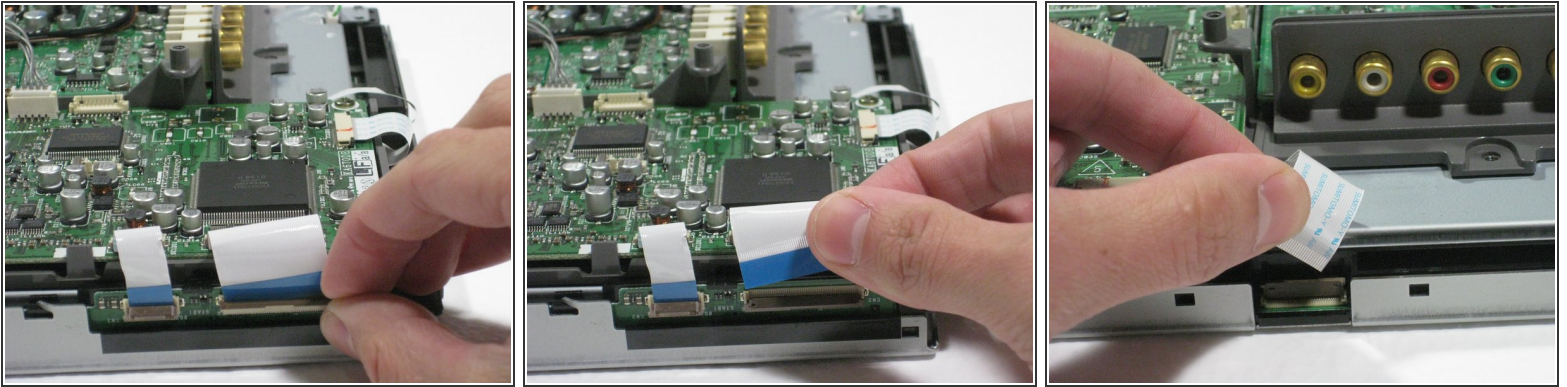
## Step 12



- Turn the circuit board so the blue and pink side cables are facing you.
- ⓘ Hold the white plastic, squeeze and pull from the sides.
- ⚠ Pull on the plastic part of the connector, even though it may seem easiest to pull on the wires.

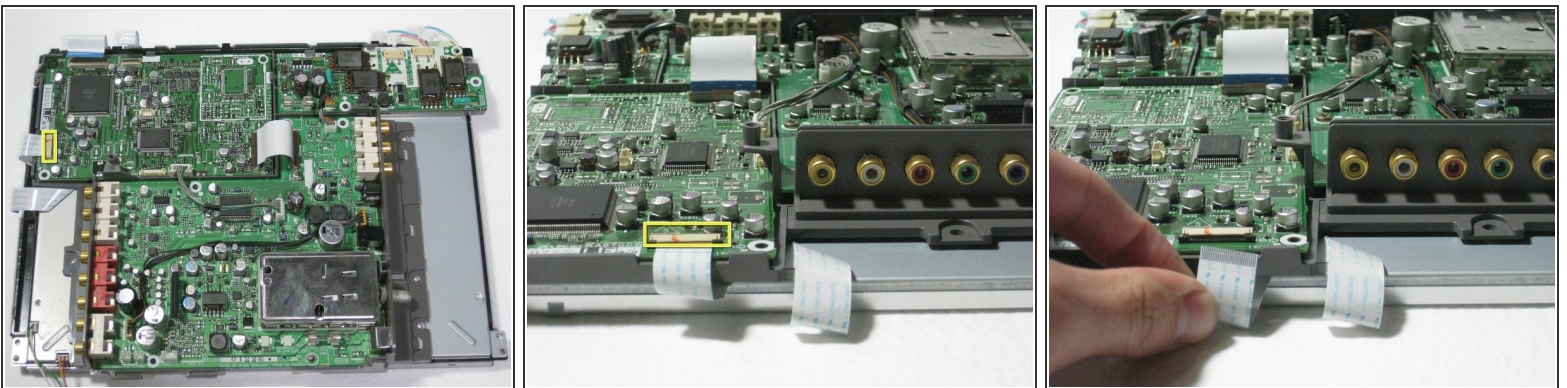


## Step 13



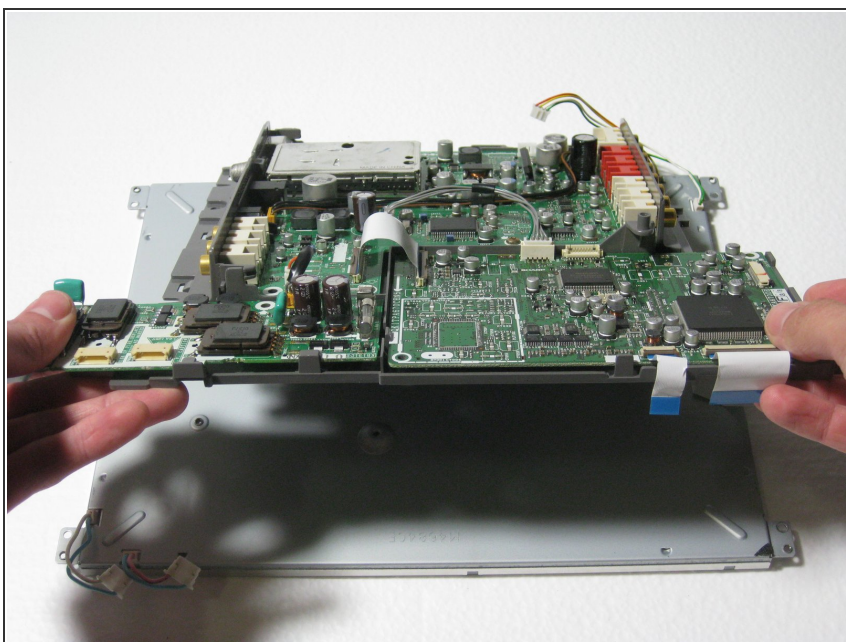
- Turn the television so the right hand side is facing you.
- ⓘ To remove the ribbon cables, fold the brown casing down and pull directly upward on the ribbon.
- Turn the television so the left hand side is facing you, and remove the ribbon cable in the same manner.

## Step 14



- Turn the circuit board so that the left side is facing you.
- Detach the data cable from the circuit board.
- To do this, slide your finger nail from the middle of the connector until the little black tabs rotates down toward the board as shown in the second picture.

## Step 15



- Lift and remove the circuit board from the LCD frame.

## Step 16



- Now you have your LCD.

To reassemble your device, follow these instructions in reverse order.