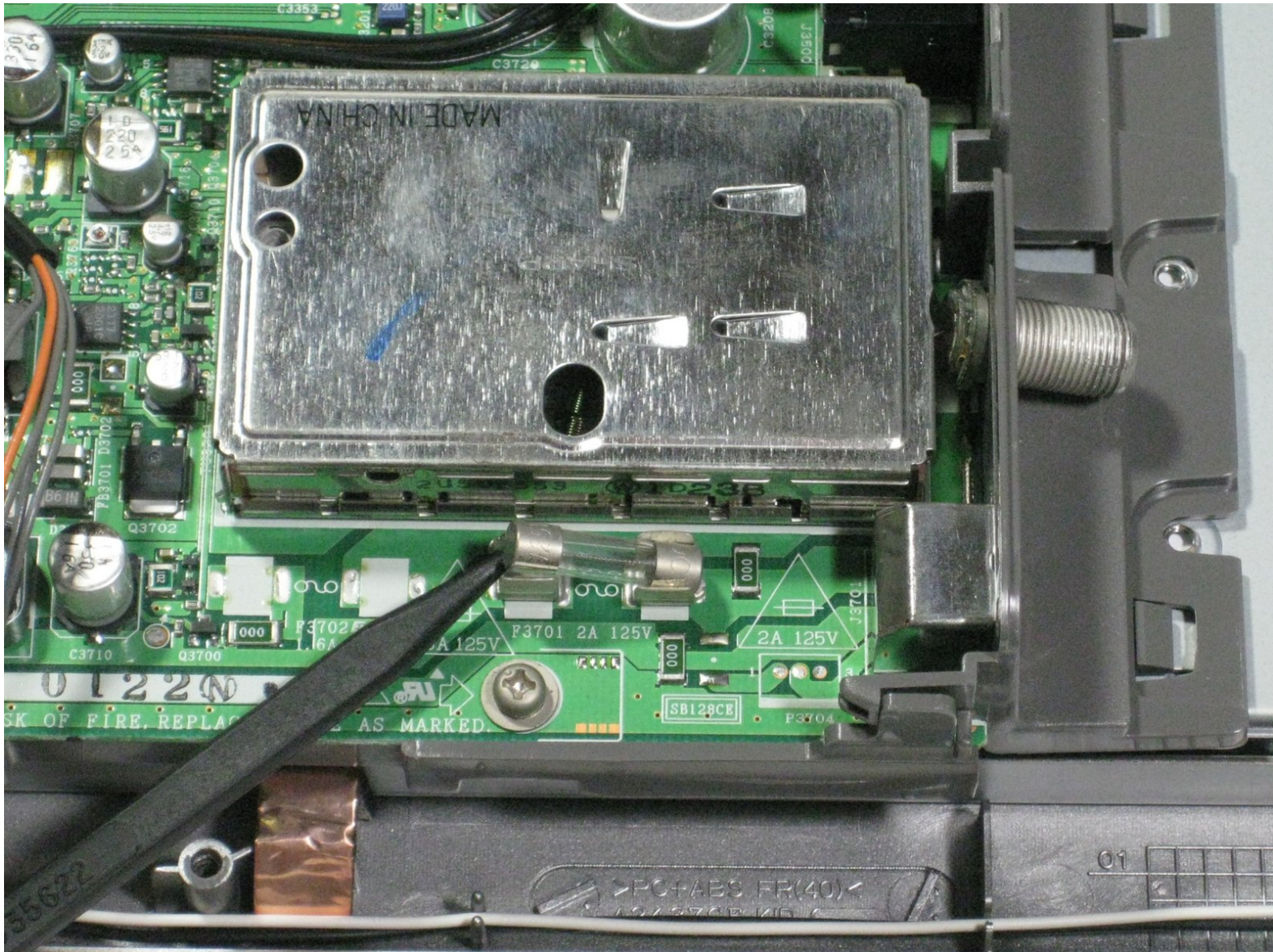




# Sharp Aquos LC13B2UA Fuses Replacement

Written By: Robert Hobson





## TOOLS:

- [Phillips #2 Screwdriver](#) (1)
  - [Spudger](#) (1)
-



## Step 1 — Stand



- Place the TV face down on a flat smooth surface as to not scratch the screen.
- Using a Phillips #2 screwdriver remove the four 8mm screws attaching the stand to the TV.

## Step 2



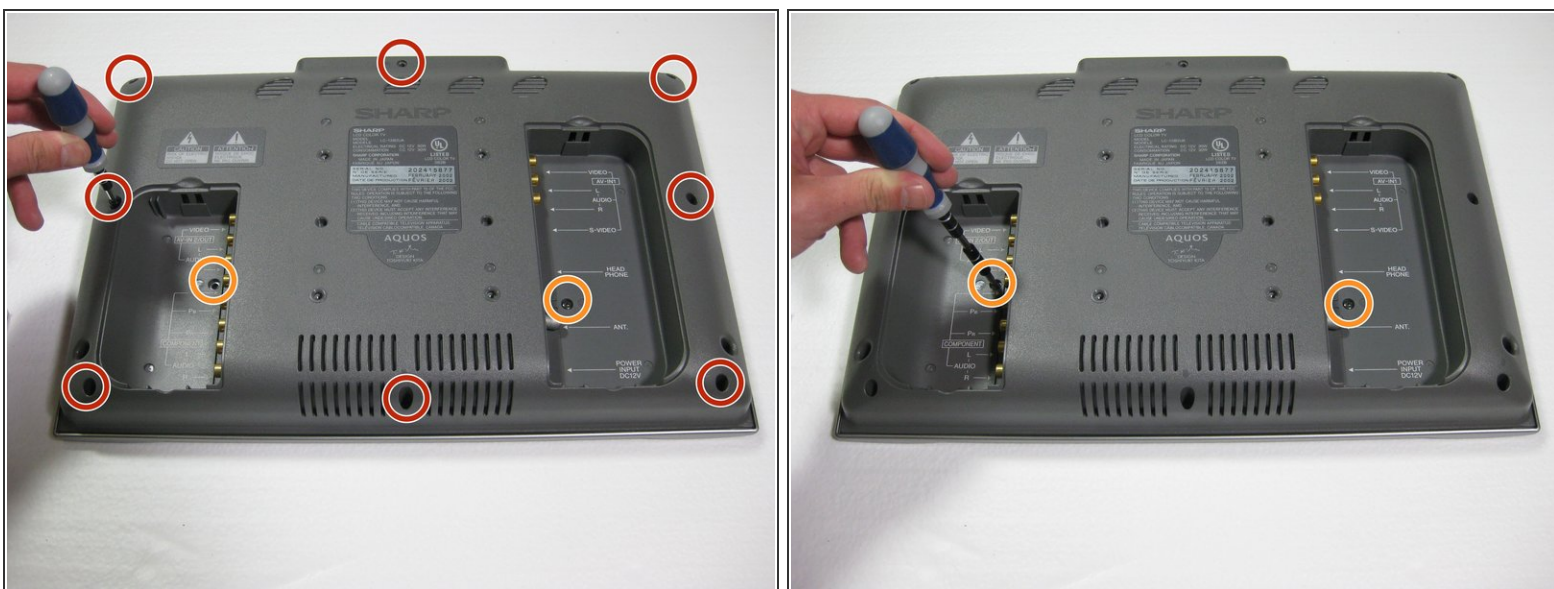
- Lift the stand off the television.

### Step 3 — Back Case



- Remove the two back panels by prying them out with your hands.

### Step 4



- Using a Phillips #2 screwdriver, remove the eight 6mm Phillips screws located around the edge.
- Using a Phillips #2 screwdriver, remove the two 6mm Phillips screws located near the inputs.

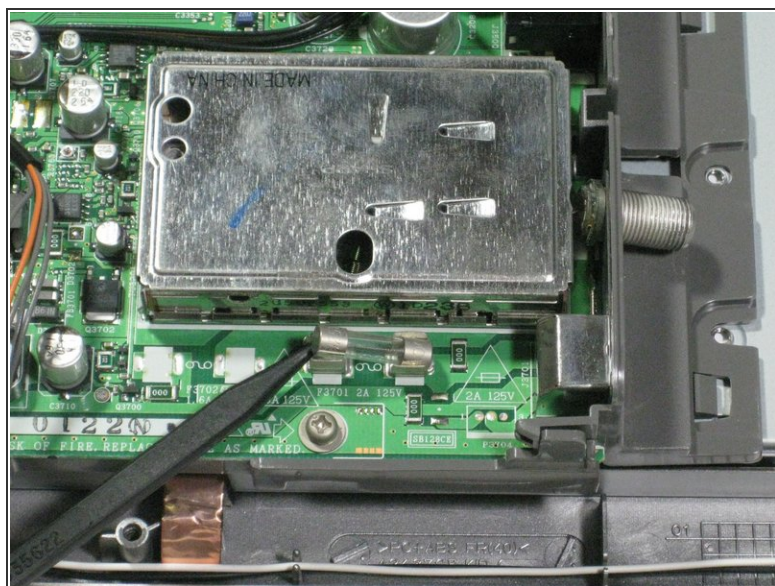
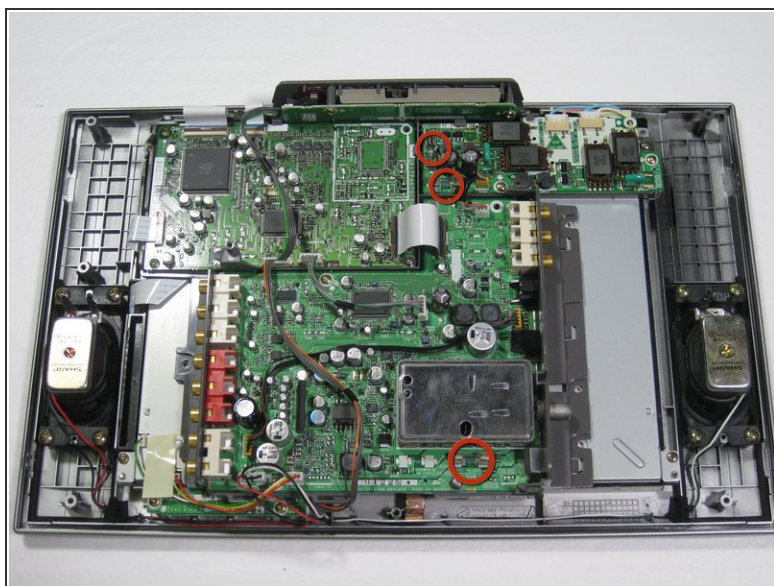
## Step 5



- Using your hands, gently lift and remove the back case of the television.



## Step 6 — Fuses



- To identify a broken fuse, look at the thin wire running through the center of the fuse. If the wire is misshapen or broken, the fuse needs to be replaced.
  - To remove the fuse, either push from one side or pry gently with a spudger.
- ⚠ Make sure to replace the fuse with the correct amperage and voltage fuse. The correct voltage and amperage is displayed on the side of the fuse.**

To reassemble your device, follow these instructions in reverse order.