



# MacBook Air 13" Late 2010 Battery Replacement

Replace a dead battery in your MacBook Air 13" Late 2010.

Written By: Andrew Bookholt



# INTRODUCTION

Use this guide to replace a dead battery.

[video: <http://www.youtube.com/watch?v=yqzkQOG5Do8>]

**Note:** If there is a [thin plastic film](#) on your replacement battery, do not attempt to remove it. It is glued on and protects the battery pack while it is inside the MacBook.



## TOOLS:

- [P5 Pentalobe Screwdriver Retina MacBook Pro and Air](#) (1)
- [T5 Torx Screwdriver](#) (1)



## PARTS:

- [MacBook Air 13" \(Mid 2010 to 2017\) Replacement Battery](#) (1)

## Step 1 — Lower Case



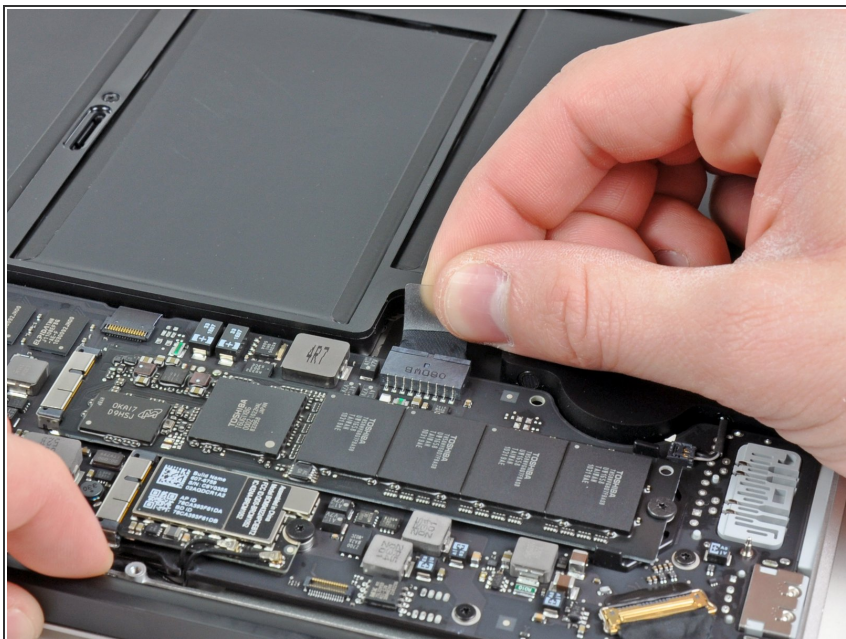
- i Before proceeding, power off the device, close the lid and lay it on a soft surface top-side down.
- Remove the following ten screws:
  - Two 9 mm 5-point Pentalobe screws
  - Eight 2.6 mm 5-point Pentalobe screws
- i The special screwdriver needed to remove the eight 5-point Pentalobe screws can be found [here](#).

## Step 2



- Wedge your fingers between the display and the lower case and pull upward to pop the lower case off the Air.
- Remove the lower case and set it aside.

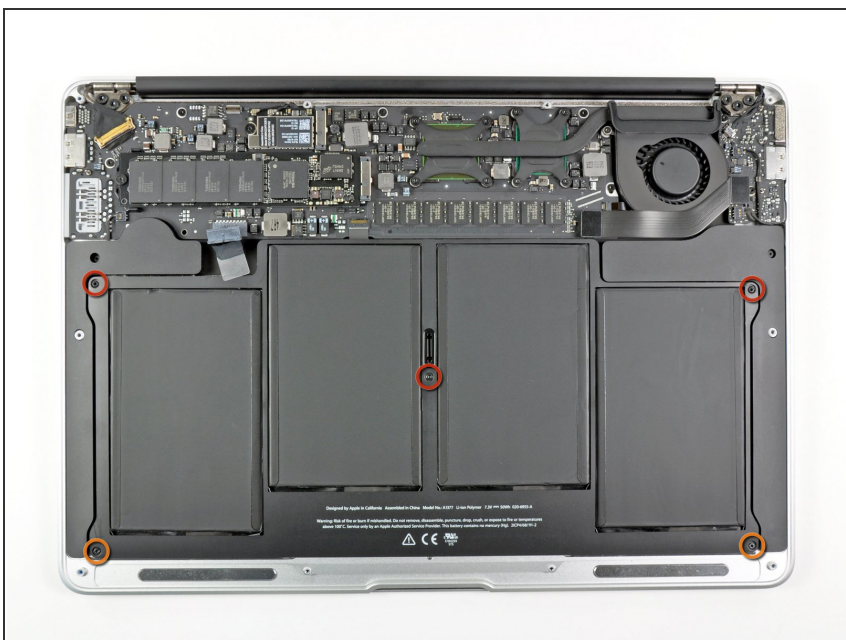
## Step 3 — Battery



- Grab the clear plastic pull tab attached to the battery connector and pull it toward the front edge of the Air to disconnect the battery from the logic board.

⚠ Do not lift upward on the connector as you disconnect it.

## Step 4



- Remove the following five screws securing the battery to the upper case:
  - Three 6.3 mm T5 Torx screws
  - Two 2.4 mm T5 Torx screws



## Step 5



**⚠ When handling the battery, avoid squeezing or touching the four exposed lithium polymer cells.**

- Lift the battery from its edge nearest the logic board and remove it from the upper case.
- ☑ If you're installing a new battery, you should [calibrate](#) it after installation:
  - Charge it to 100%, and then keep charging it for at least 2 more hours. Then, unplug and use it normally to drain the battery. When you see the low battery warning, save your work, and keep your laptop on until it goes to sleep due to low battery. Wait at least 5 hours, then charge your laptop uninterrupted to 100%.
  - If you notice any unusual behavior or problems after installing your new battery, you may need to [reset your MacBook's SMC](#).
- ☑ The replacement battery may arrive with plastic liners and films. The plastic film is easily removable and should be removed before installation. The liner is thicker and acts as a layer of defense against punctures. Do not remove the liner from the battery.

To reassemble your device, follow these instructions in reverse order.