



Samsung Galaxy S6 Rear Glass Adhesive Replacement

Removing the rear glass panel from your Galaxy...

Written By: Evan Noronha



INTRODUCTION

Removing the rear glass panel from your Galaxy S6 destroys the adhesive holding it in place. Follow this guide to replace the adhesive tape on your Galaxy S6's rear glass. Most adhesive strips will come packaged as shown, although the film dimensions and color may vary.

Before beginning, we recommend you remove any residual adhesive from the glass panel using a lint-free cloth and solvent such as high concentration isopropyl alcohol (at least 90%).

Be sure to turn on your phone and test your repair before installing new adhesive and resealing the phone.



TOOLS:

[X-ACTO Knife](#) (1)

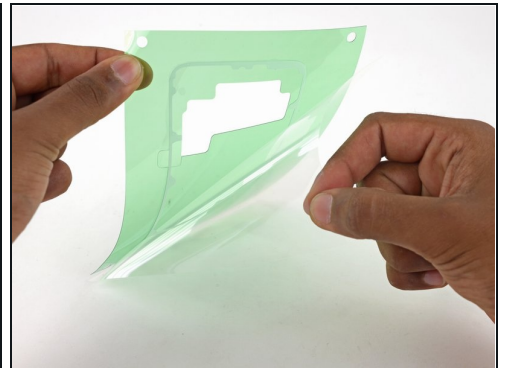
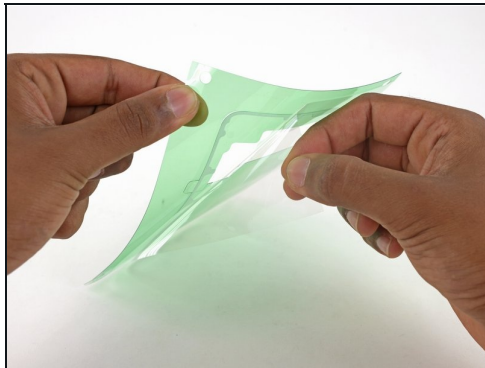
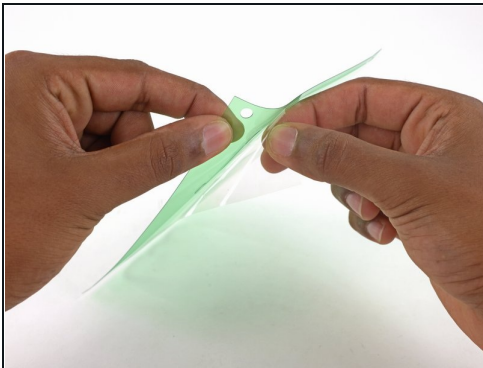
[Tweezers](#) (1)



PARTS:

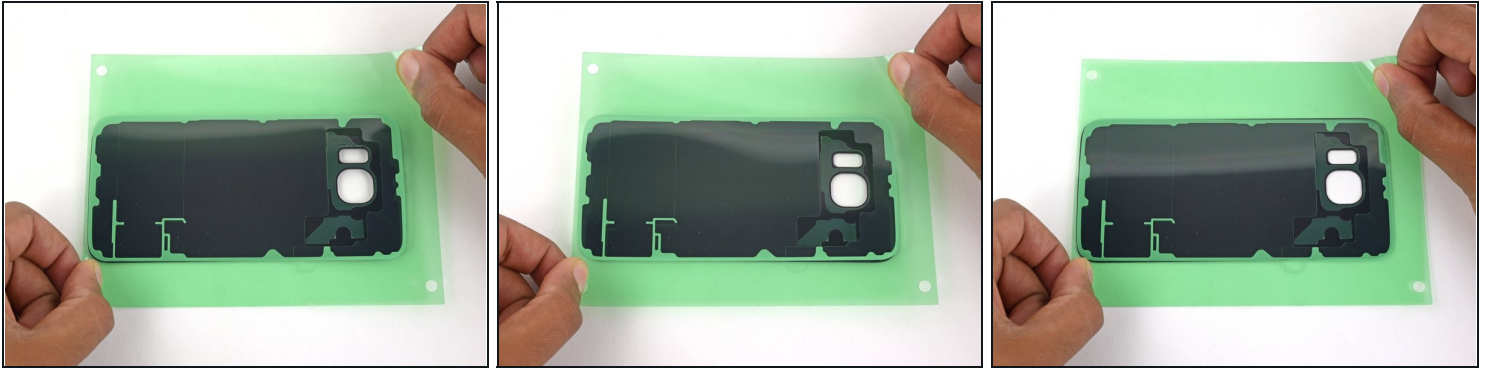
[Galaxy S6 Rear Cover Adhesive](#) (1)

Step 1 — Rear Glass Adhesive



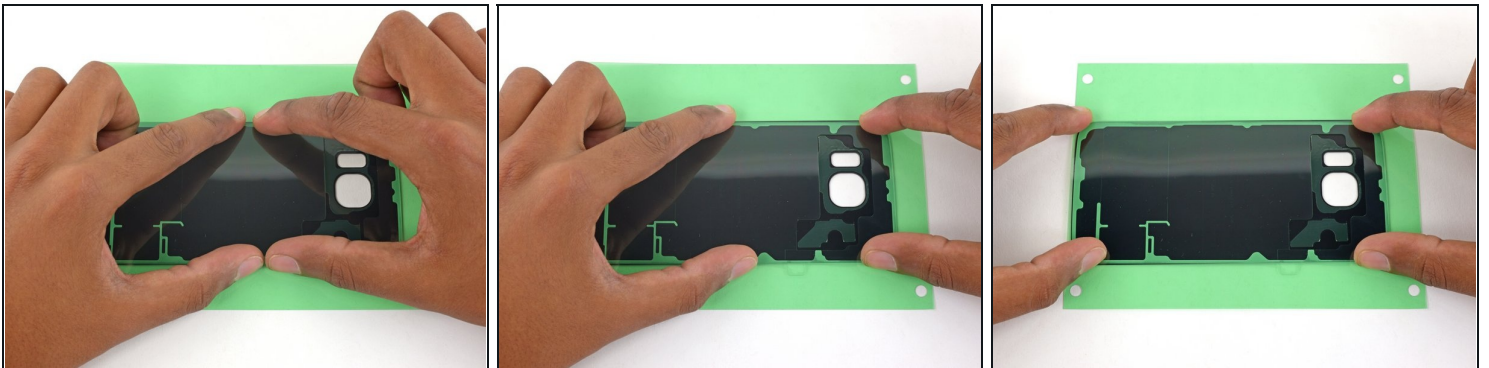
- Peel the clear film off of the adhesive packaging.

Step 2



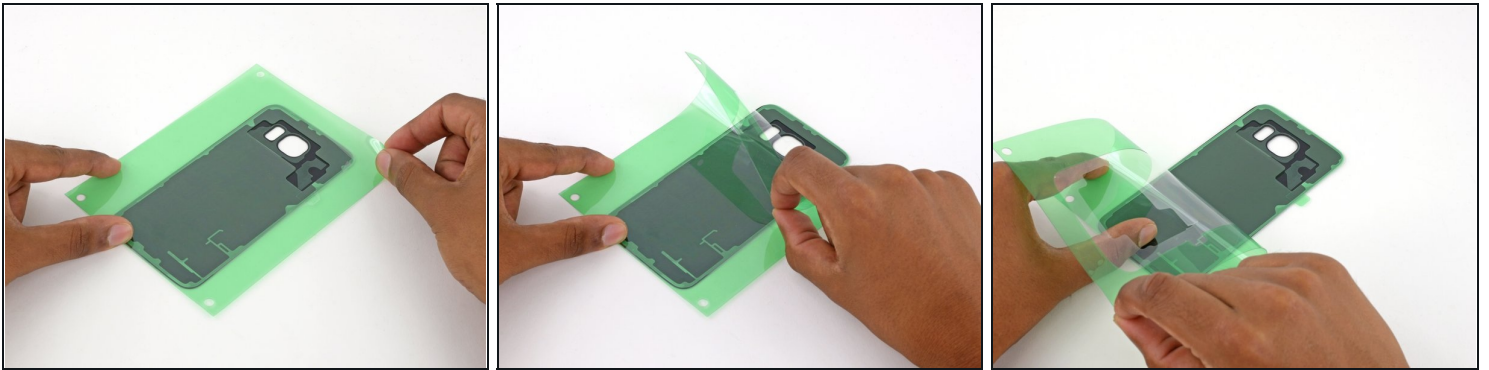
- ① Lay the glass panel face-up and rotate it so that the lens holes are on your right.
- Grasp the adhesive from both sides and align the tape over the rear glass.
 - ① Make sure to align the camera and heart rate sensor holes on the phone with the adhesive tape.
- Lay the adhesive on top of the glass.

Step 3



- Run your fingers over the tape to firmly attach it to the glass.

Step 4



- Peel back the outer layer of green film.

Step 5



- Peel back the inner film layer.

Step 6



- If you didn't perfectly align the adhesive with the panel, use an X-Acto knife to trim away the edges.
- ❗ **This will only fix minor misalignments.** If you have to trim off more than half the adhesive strip, you should remove the tape and start over.

Step 7



- Use a pair of [tweezers](#) to remove any adhesive still on the midframe.
- Clean the adhesion areas with high concentration isopropyl alcohol (at least 90%) and a lint-free cloth.

Step 8



- Align the top of the rear glass with the top of the phone.
- Press the top edge of the glass into the midframe so that there's no gap at the top.

Step 9



- Lower the rest of the rear panel and press it firmly into the midframe.
-