



Samsung Galaxy S6 Motherboard Assembly Replacement

Prereq only.

Written By: Evan Noronha



INTRODUCTION

Prereq to remove the motherboard.

This guide involves removing the rear glass. Removing the rear glass destroys the adhesive holding it in place. Follow [this guide](#) to reinstall the rear glass.

TOOLS:

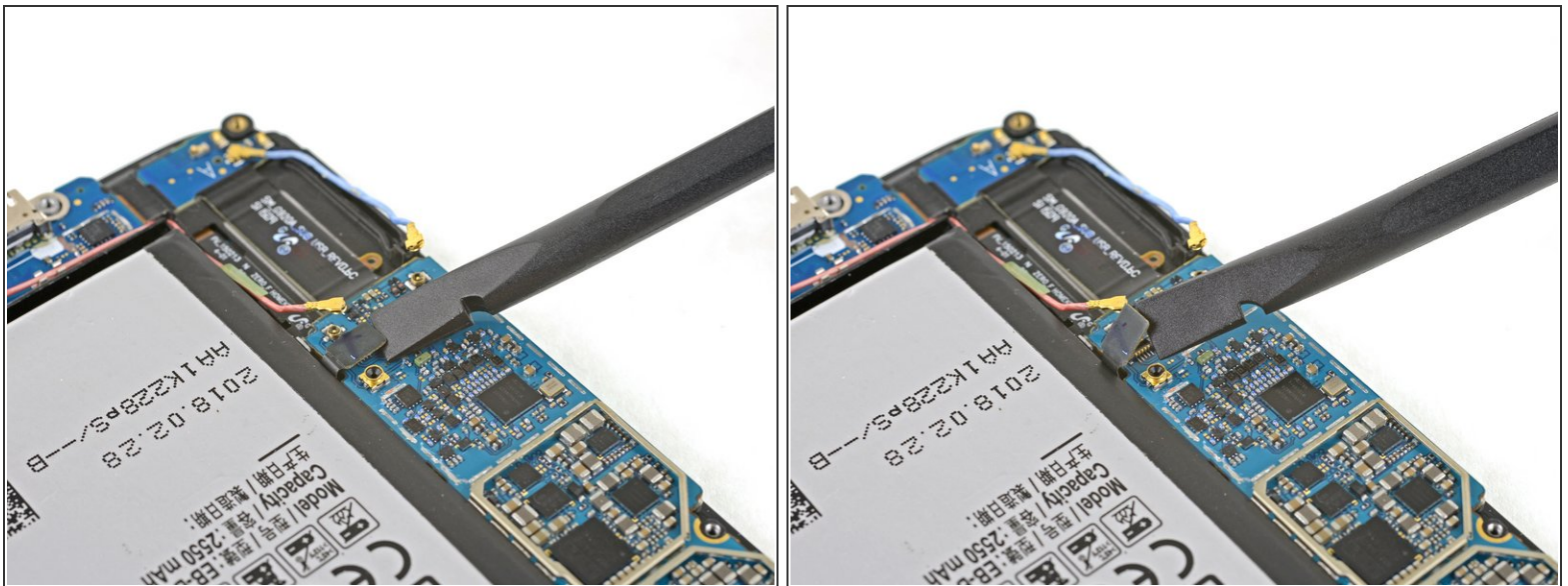
- [Spudger](#) (1)
-

Step 1 — Motherboard Assembly



- Use the pointed edge of a spudger to disconnect the Bluetooth and Wi-Fi antenna cable connectors from their sockets on the motherboard.

Step 2



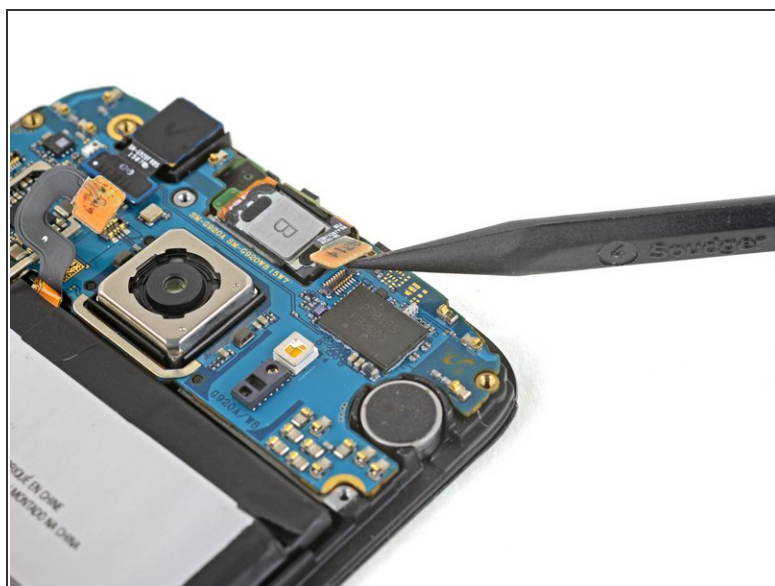
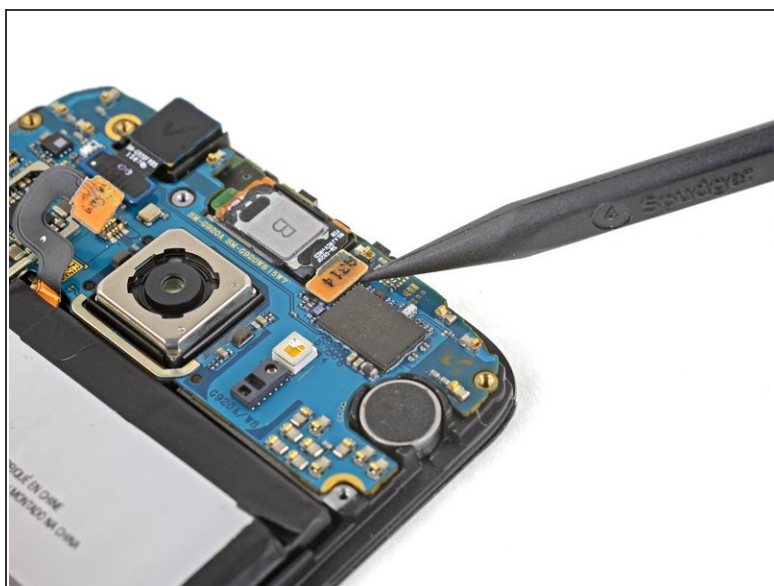
- Use the flat end of the spudger to disconnect the home button connector.

Step 3



- Use the flat end of a spudger to disconnect the display assembly cable from the motherboard.

Step 4



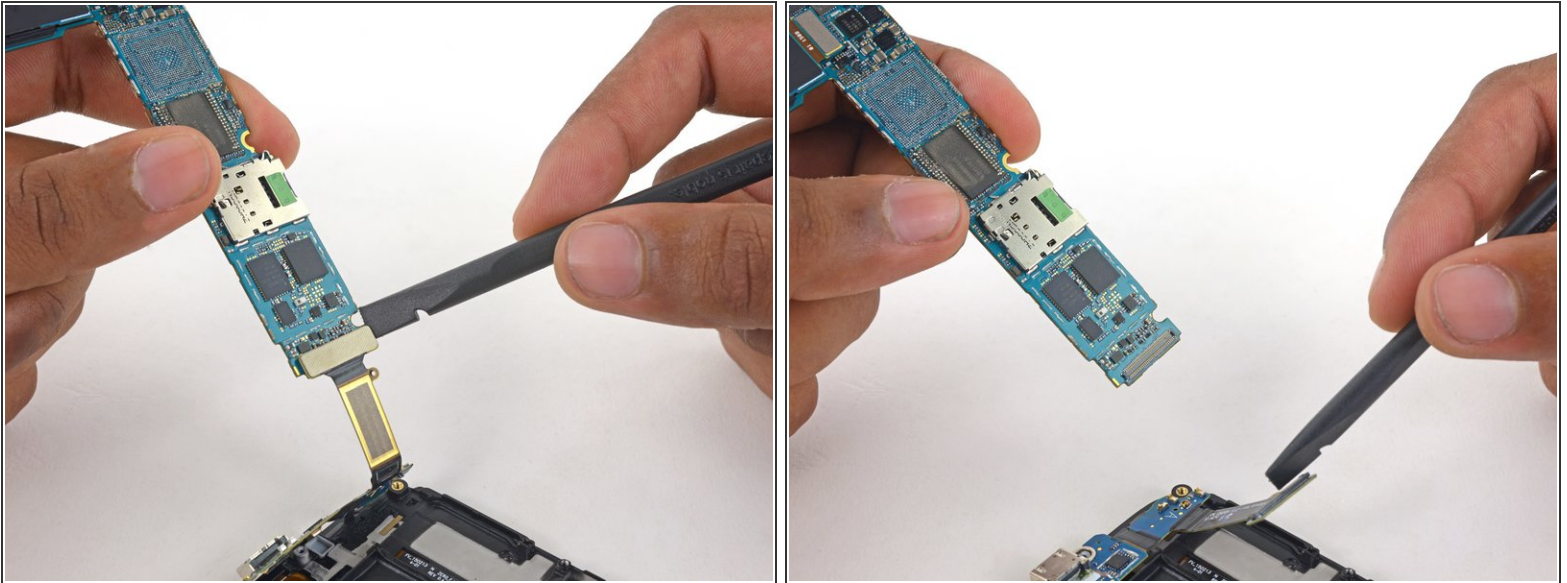
- Disconnect the earpiece speaker assembly cable connector from the motherboard.

Step 5



- Lift the camera-side end of the motherboard to separate it from the display frame.
 - ⓘ You may need to move some of the ribbon cables out of the way while you lift the motherboard. If the board is hard to lift, check that it is fully disconnected and not caught on any ribbon cables.
- ⚠ Do **not** fully remove the motherboard yet—it is still attached to the daughterboard via a ribbon cable on the underside of the motherboard.

Step 6



- Use the flat end of a spudger to disconnect the daughterboard ribbon cable connector from its socket on the underside of the motherboard.

To reassemble your device, follow these instructions in reverse order. When reinstalling the rear glass, refer to the [rear glass adhesive replacement guide](#).