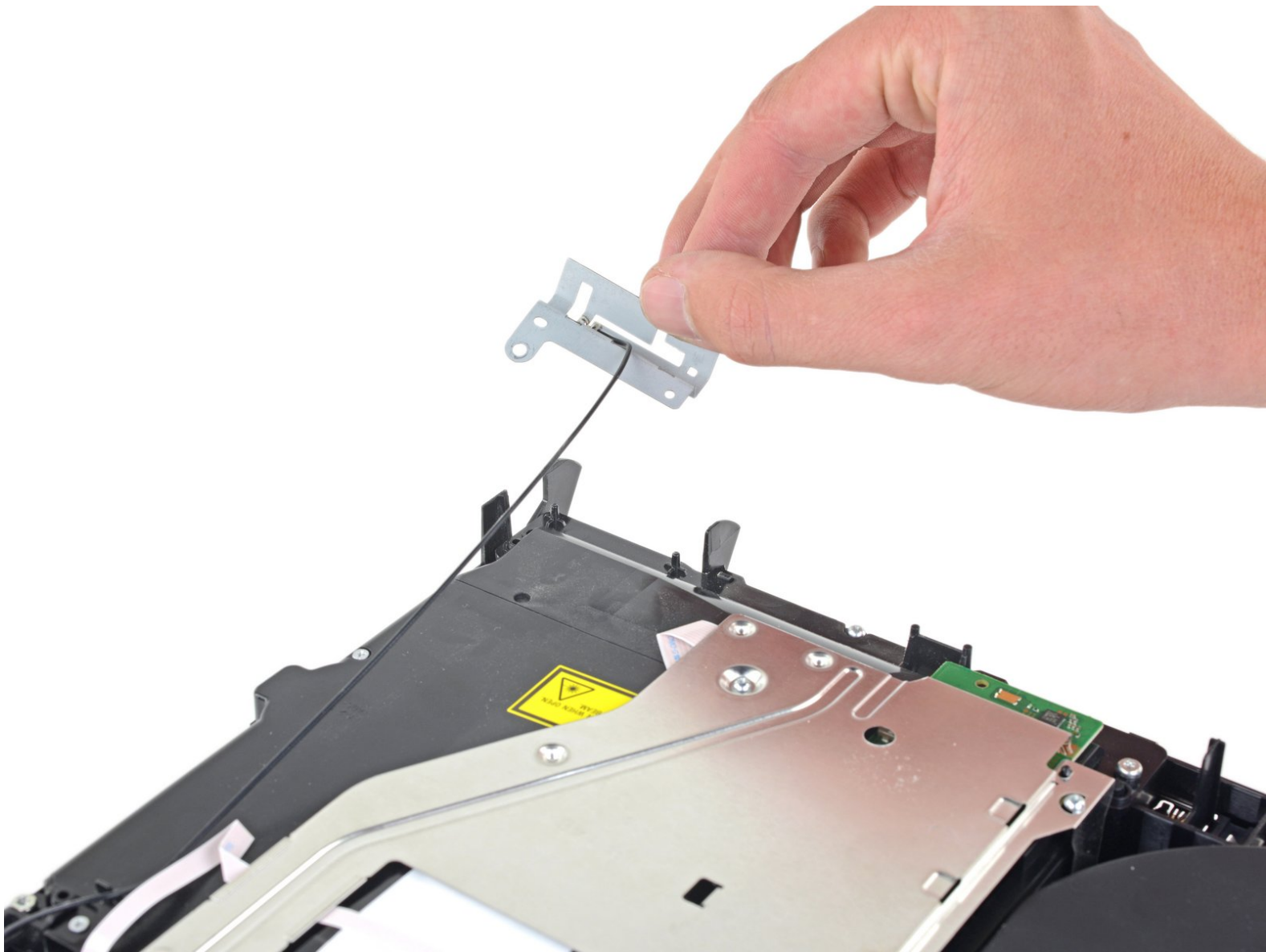




PlayStation 4 Wi-Fi Antenna Replacement

Follow this guide to replace the Wi-Fi antenna...

Written By: Sam Omiotek



INTRODUCTION

Follow this guide to replace the Wi-Fi antenna on your Sony Playstation 4.

Unplug your PS4 before beginning any repairs.



TOOLS:

- [Tweezers](#) (1)
- [TR8 Torx Security Screwdriver](#) (1)
- [Phillips #0 Screwdriver](#) (1)
- [Spudger](#) (1)



PARTS:

- [PlayStation 4 Wi-Fi Antenna](#) (1)

Step 1 — Flip over the PS4



- Flip the PS4 upside-down with the back side facing towards you.

Step 2 — Remove the warranty stickers



- Use tweezers to remove the two stickers in the center of the back of the PS4 exposing two case screws.

Step 3 — Remove the plastic screw covers



- Use tweezers to carefully remove the plastic screw covers in each corner, exposing two more case screws.

Step 4 — Remove the rear case screws



- Remove the four 7.2 mm Torx security screws on the back of the PS4.

Step 5 — Remove the lower case



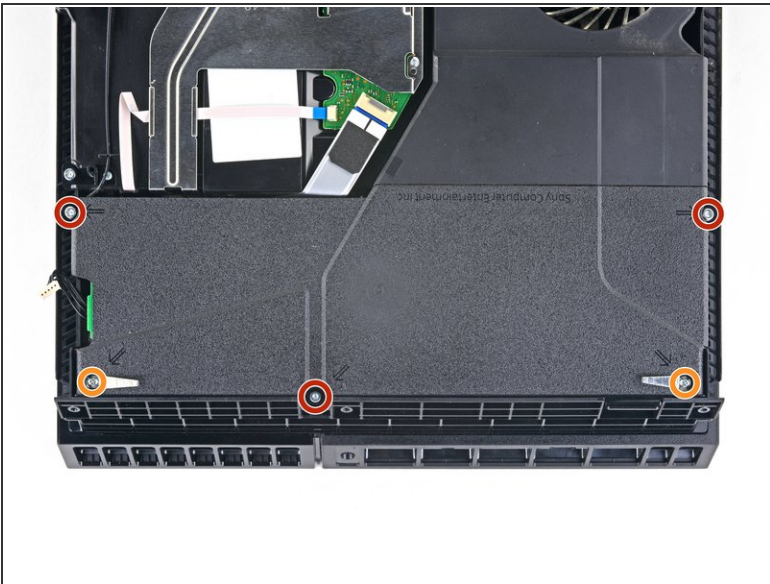
- Use your thumbs to lift the lower case up and off the PS4.
- ⓘ The lower case is held into place by plastic clips. You may need to use significant force to release the lower case.

Step 6



- Use a pair of tweezers to pull the power supply cable straight out and disconnect the power supply unit from the motherboard.
- ⓘ If your connector feels stuck, use a spudger to gently pry the connector out.

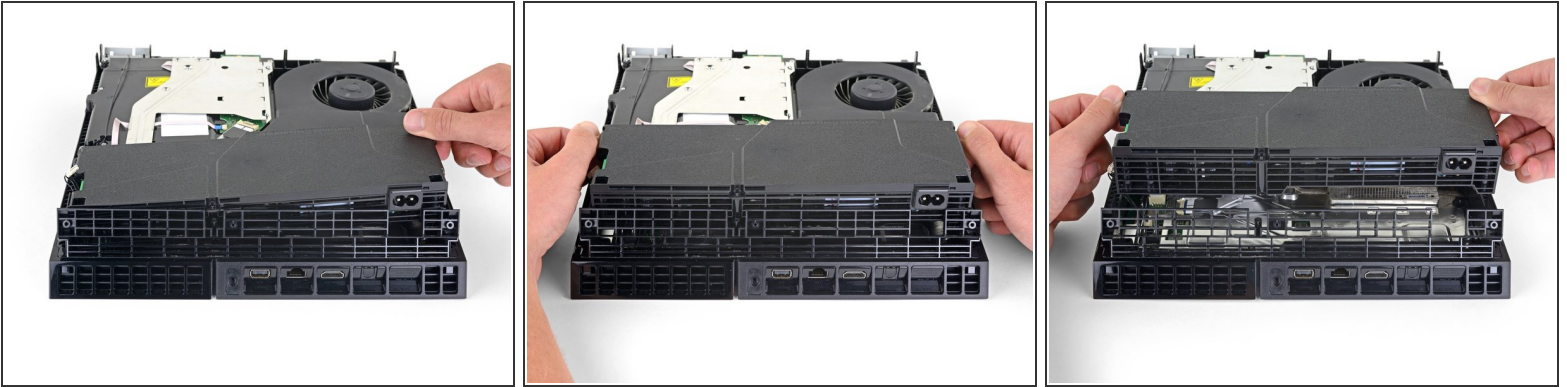
Step 7 — Remove the power supply unit



- Remove three 9.7 mm Torx security screws.
- Remove two 41 mm Phillips screws and brackets.

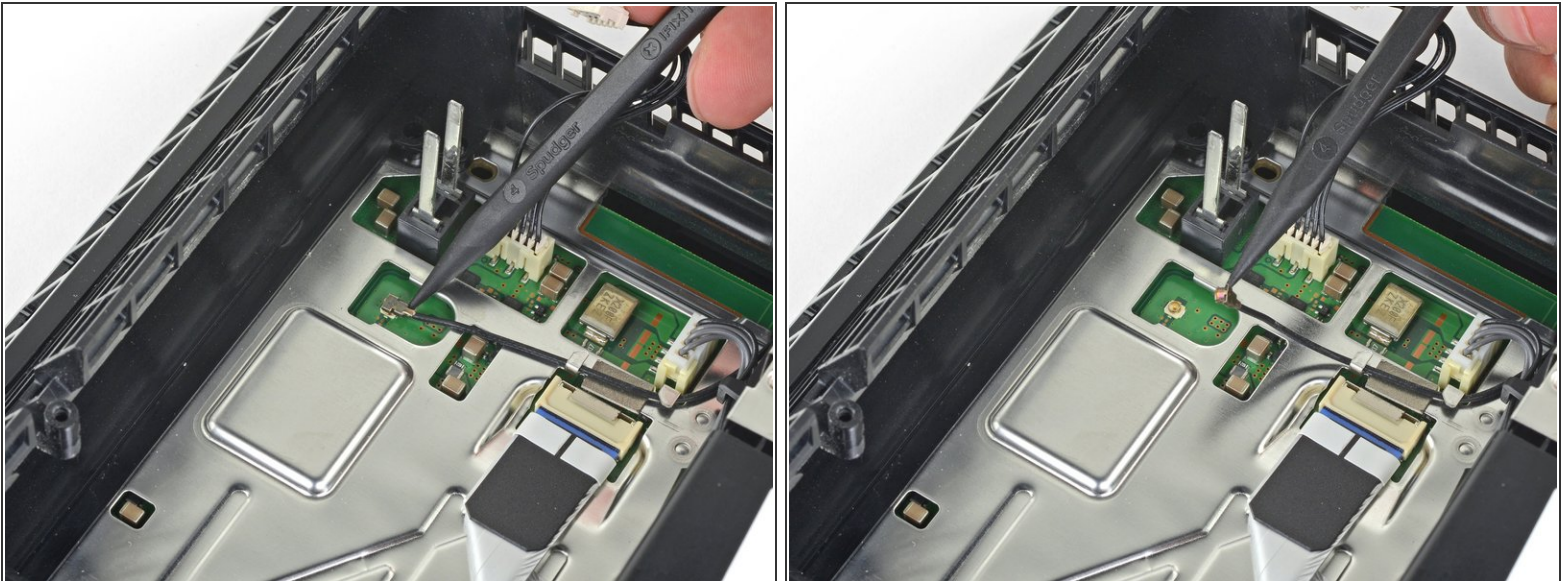
This document was generated on 2023-03-07 04:33:36 PM (MST).

Step 8



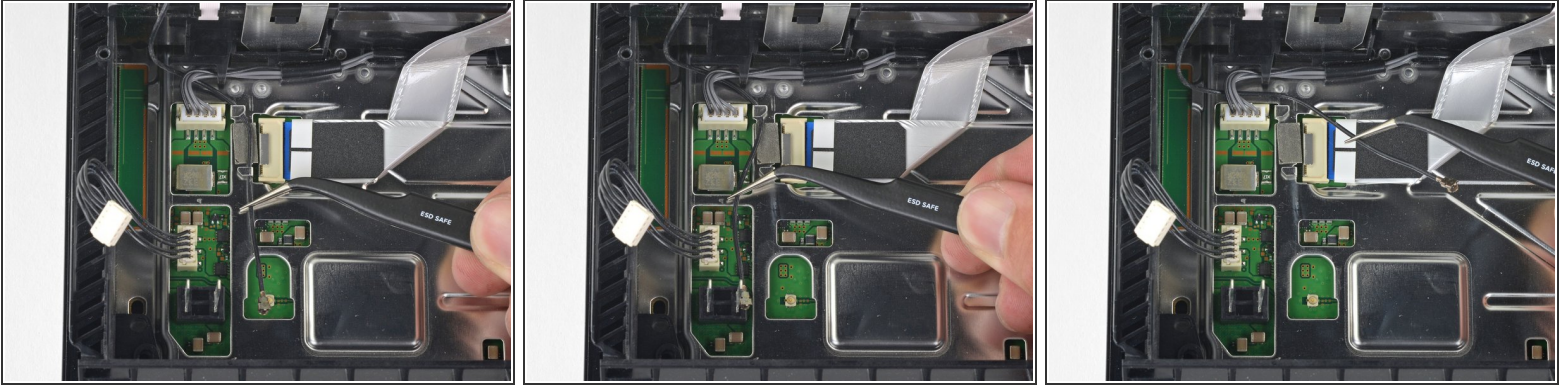
- Lift the power supply straight up and out of the PS4.
- ⓘ The power supply is held firmly in place by prongs on the left side. It may take multiple attempts to remove it.
- ☑ During reassembly, ensure the prongs are aligned, then press the power supply into place.

Step 9 — Remove the Wi-Fi antenna



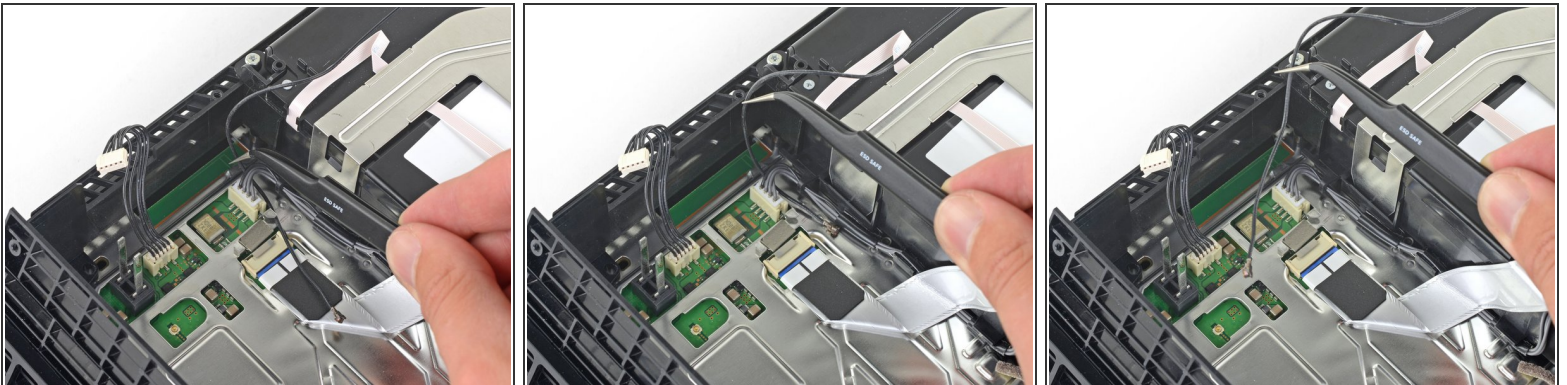
- Use the tip of a spudger to disconnect the antenna cable from the motherboard.

Step 10



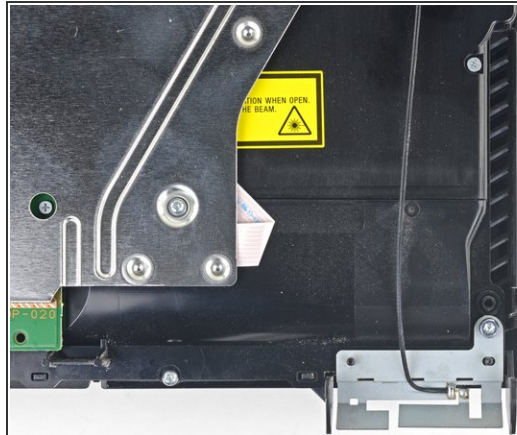
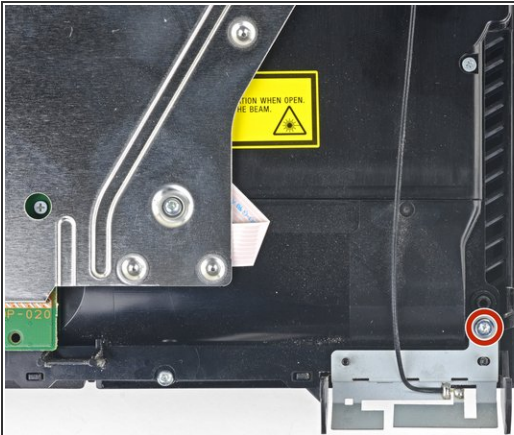
- Use a pair of tweezers or your fingers to grab the antenna cable and move it out from the cable guides.

Step 11



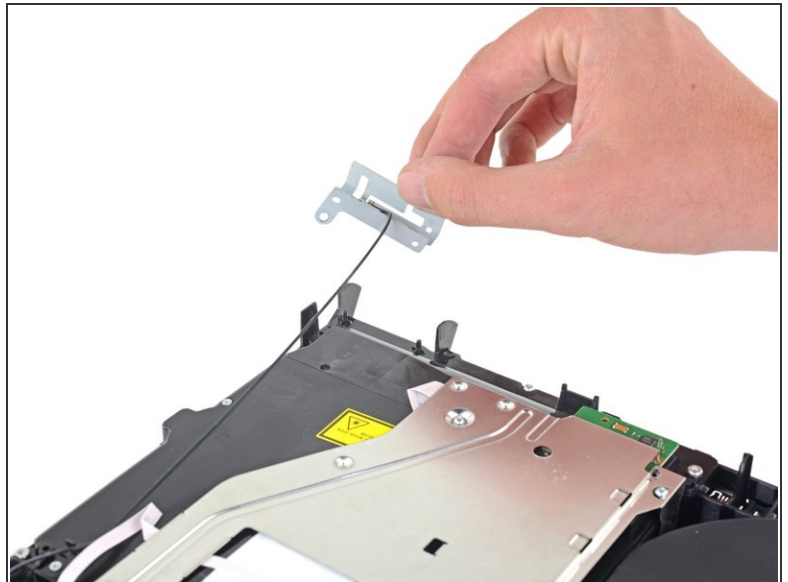
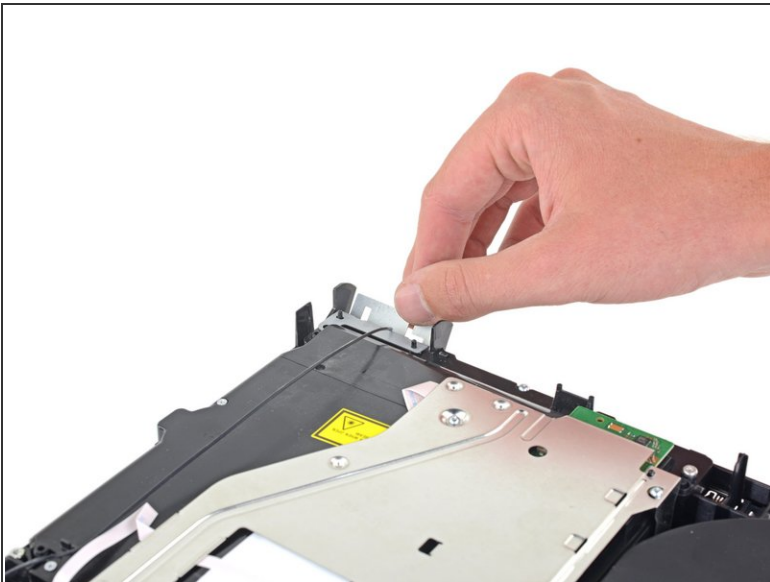
- Use a pair of tweezers or your fingers to thread the antenna cable out from underneath the optical drive cable.

Step 12



- Remove the 9.7 mm Torx security screw securing the antenna.

Step 13



- Remove the Wi-Fi antenna.

To reassemble your device, follow the above steps in reverse order.

Take your e-waste to an [R2 or e-Stewards certified recycler](#).

Repair didn't go as planned? Check out our [Answers community](#) for troubleshooting help.

Compare your new replacement part to the original part—you may need to transfer remaining components or remove adhesive backings from the new part before installing.