



# MacBook Pro 13" Unibody Mid 2010

## Subwoofer & Right Speaker Replacement

Replace the subwoofer & right speaker in your...

Written By: Walter Galan



# INTRODUCTION

Replace the subwoofer & right speaker in your MacBook Pro 13" Unibody Mid 2010.



## TOOLS:

- [Phillips #00 Screwdriver](#) (1)
- [Spudger](#) (1)



## PARTS:

- [MacBook Pro 13" Unibody Subwoofer and Right Speaker](#) (1)

## Step 1 — Remove the lower case screws



- Remove the following 10 screws securing the lower case to the MacBook Pro 13" Unibody:
  - Seven 3 mm Phillips screws.
  - Three 13.5 mm Phillips screws.

## Step 2 — Lift the lower case away



- Slightly lift the lower case and push it toward the rear of the computer to free the mounting tabs.



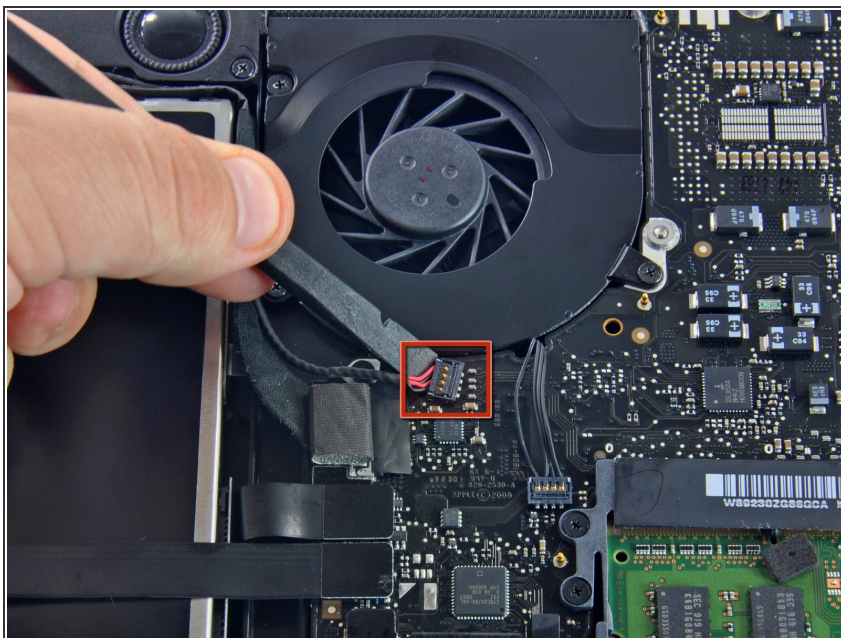
## Step 3 — Battery



**⚠** For precautionary purposes, we advise that you disconnect the battery connector from the logic board to avoid any electrical discharge.

- Use the flat end of a spudger to lift the battery connector up out of its socket on the logic board.

## Step 4 — Optical Drive



**⚠** For precautionary purposes, we advise that you disconnect the subwoofer connector from the logic

board to avoid any electrical discharge. **This step is optional and is not required.**

- Remove the soft padding that may be on top and gently pull the connector up out of its socket on the logic board.

## Step 5



⚠ It will be necessary to slide the small clear plastic cable retainer (boxed in red) glued to the logic board out of the way before disconnecting the camera cable. Be careful not to break any components off the board as you slide it away from the camera cable connector.

- Pull the camera cable connector toward the optical drive to disconnect it from the logic board.
- ⓘ This socket is metal and can be easily bent. Be sure to align the connector with its socket on the logic board before mating the two pieces.



## Step 6



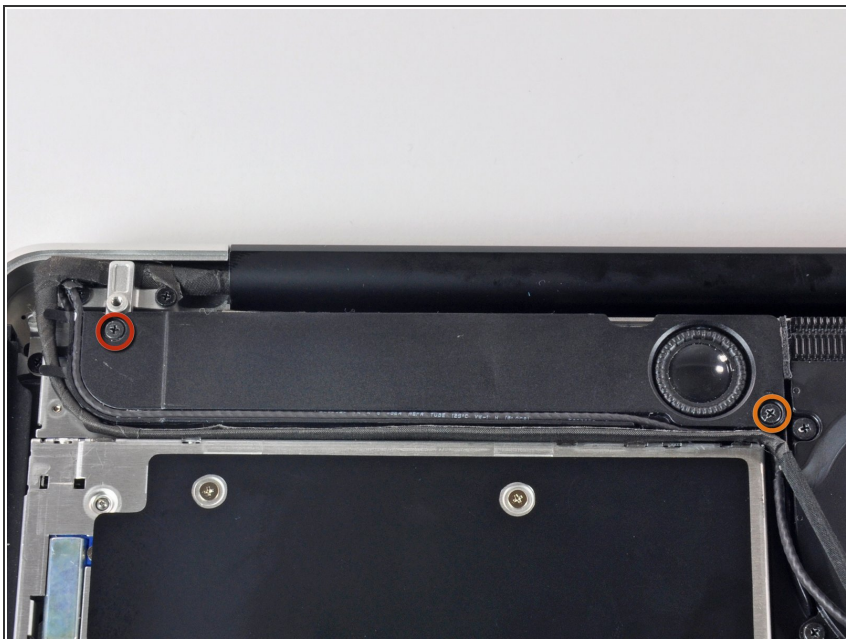
- Use the flat end of a spudger to pry the optical drive connector straight up off the logic board.

## Step 7



- Use the flat end of a spudger to pry the hard drive connector straight up off the logic board.

## Step 8



- Remove the following screws securing the subwoofer to the upper case:
  - One 3.8 mm Phillips screw
  - One 5 mm Phillips screw

## Step 9



- ☑ The subwoofer is still connected to the right speaker, so don't completely remove it just yet.
- Lift the subwoofer off the optical drive, and set it above the computer.

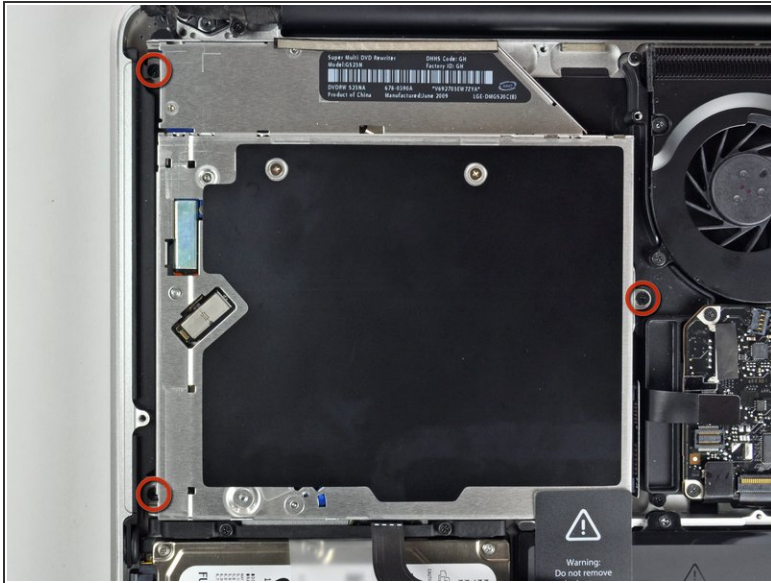
## Step 10



- Remove the two 10 mm Phillips screws securing the camera cable bracket to the upper case.
- ⓘ The leftmost screw may remain captive in the camera cable.
- Lift the camera cable bracket out of the upper case.



## Step 11



- Remove the three 2.5 mm Phillips screws securing the optical drive to the upper case.
- Lift the optical drive from its right edge and pull it out of the computer.

## Step 12 — Subwoofer & Right Speaker



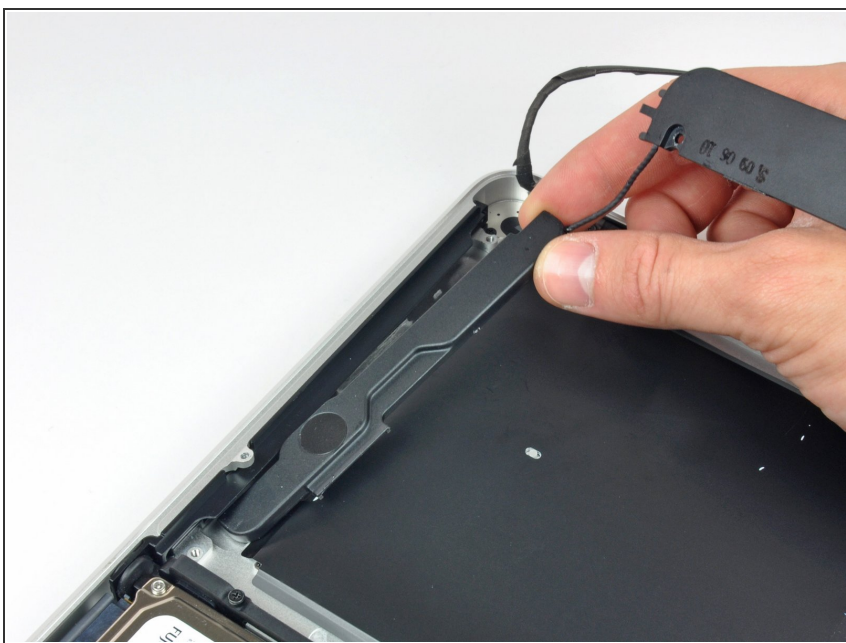
- Peel back the small piece of black tape covering the right speaker cable.
- ⚠ Be careful, as the power button ribbon cable is directly under this piece of tape.

## Step 13



- Use the tip of a spudger to pry the right speaker up off the adhesive securing it to the upper case.

## Step 14



- Lift the subwoofer and right speaker assembly out of the upper case.

To reassemble your device, follow these instructions in reverse order.