

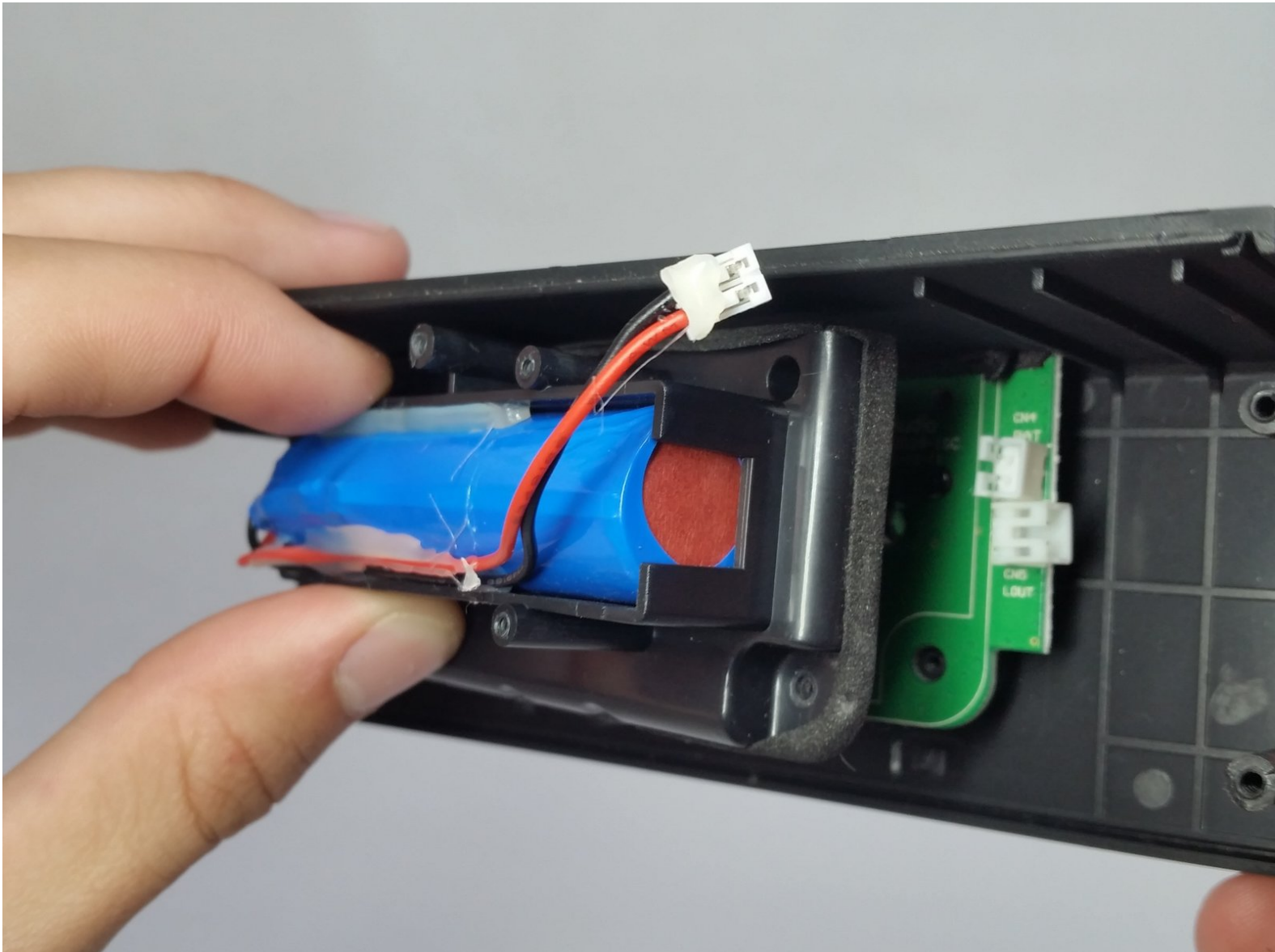


Photive Artisan Portable Bluetooth Speaker

Battery Pack Replacement

Replace the battery in the Photive Artisan Portable Bluetooth Speaker.

Written By: David Lennon



INTRODUCTION

Use this guide to replace the battery.




TOOLS:

- [Phillips #0 Screwdriver](#) (1)
-

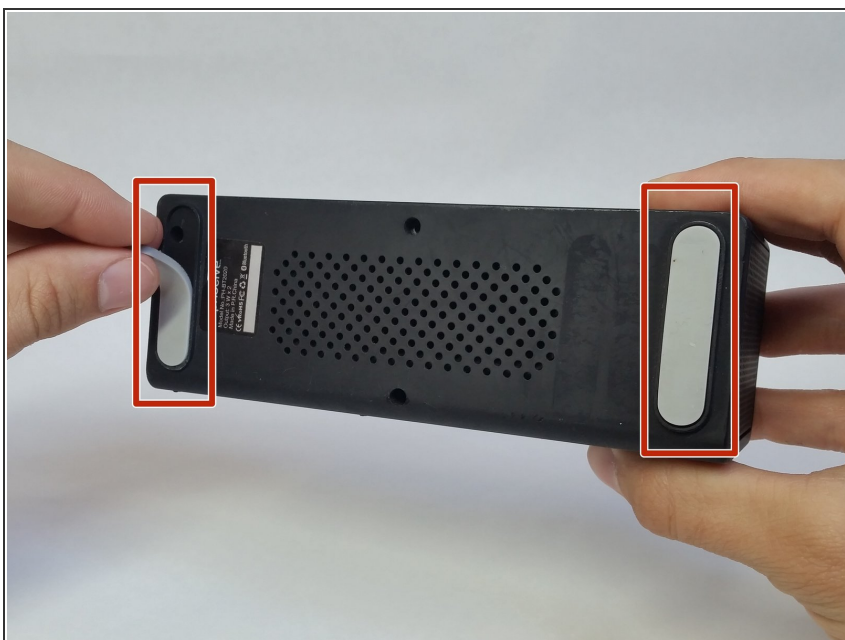
Step 1 — Front Panel



 Before continuing, be sure your device is powered off.

- Remove two 9mm Phillips #0 head screws from the bottom side of the speaker.

Step 2



- Peel back the rubber feet from either side of the base.

Step 3



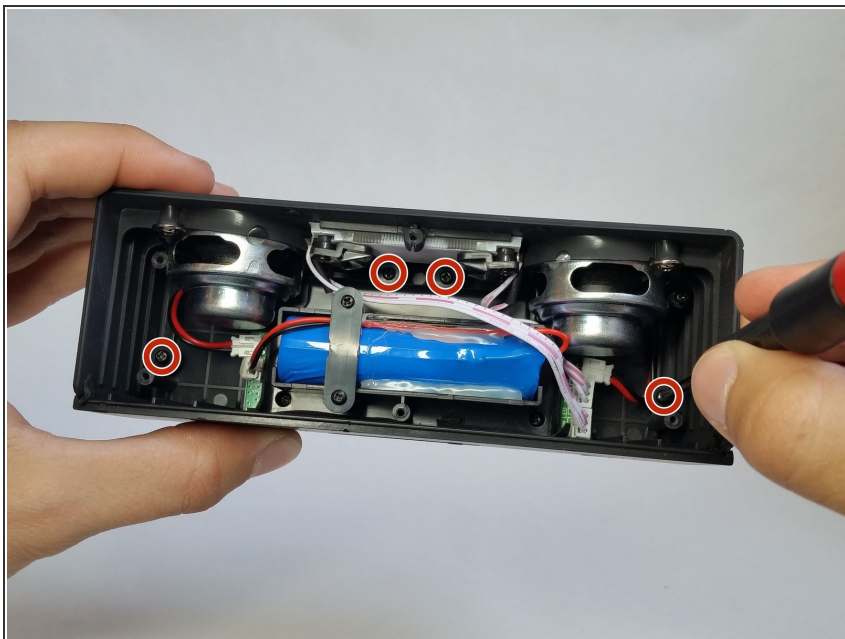
- Remove four 9mm Phillips #0 head screws from the bottom of the speaker.

Step 4



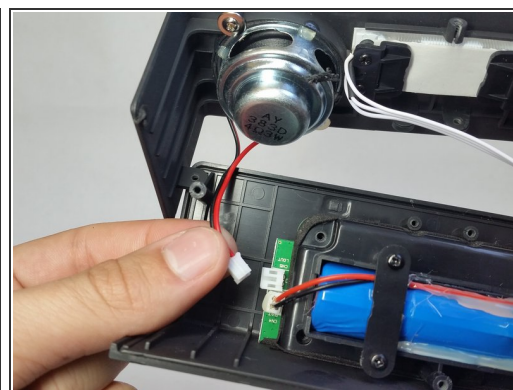
- Separate the base of the speaker from the upper housing.

Step 5



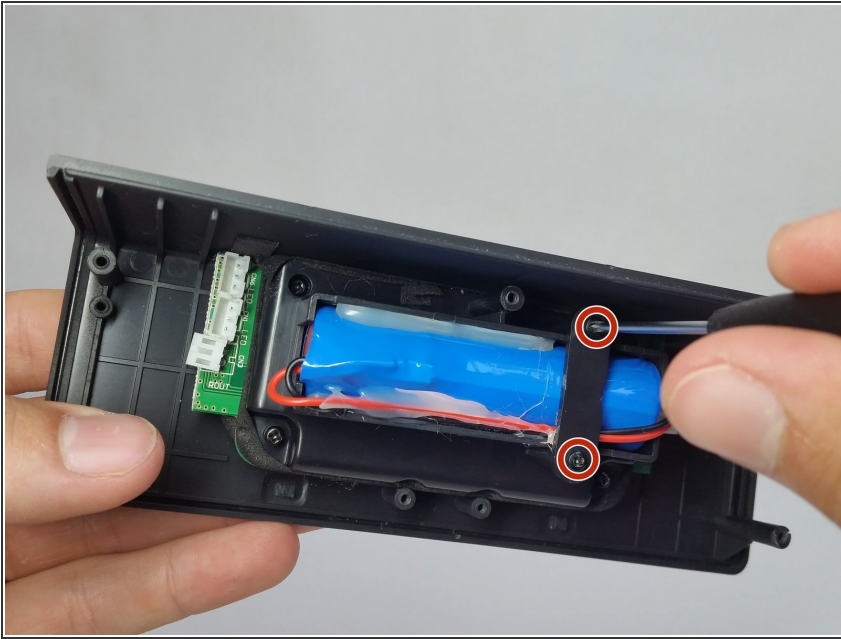
- Remove four 9mm Phillips #0 head screws from the inside of the speaker case.

Step 6



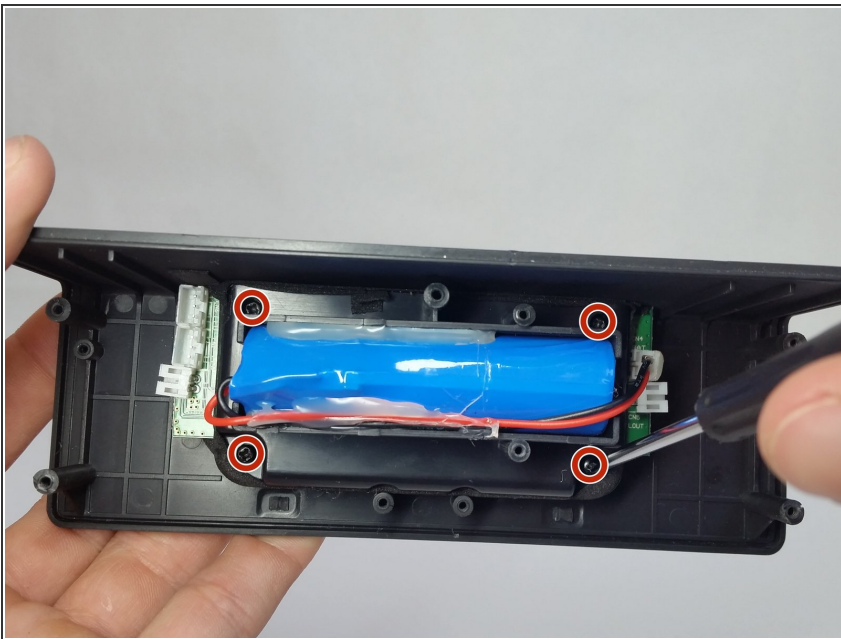
- Remove all cable connectors from the speaker motherboard.

Step 7 — Battery Pack



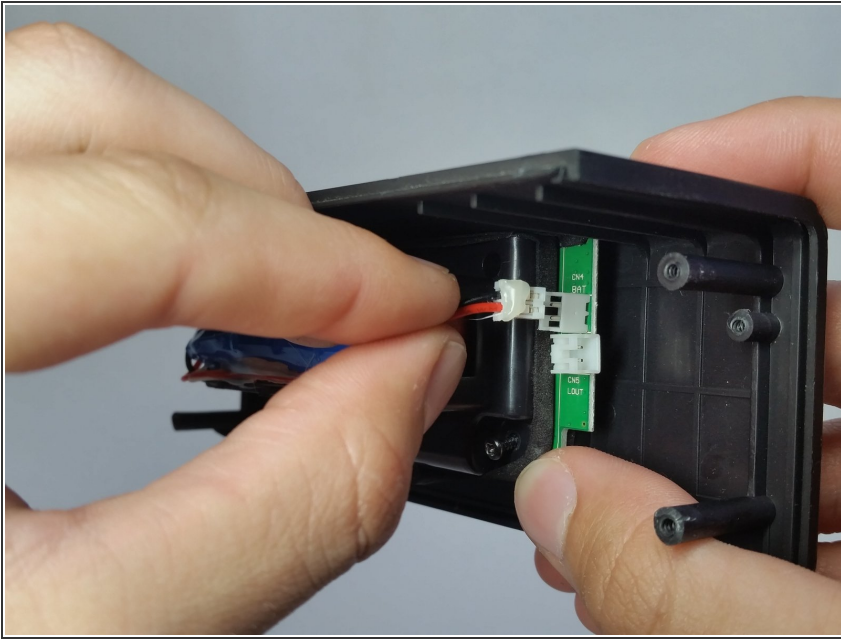
- Remove two 9mm Phillips head #0 screws from the battery holder.

Step 8



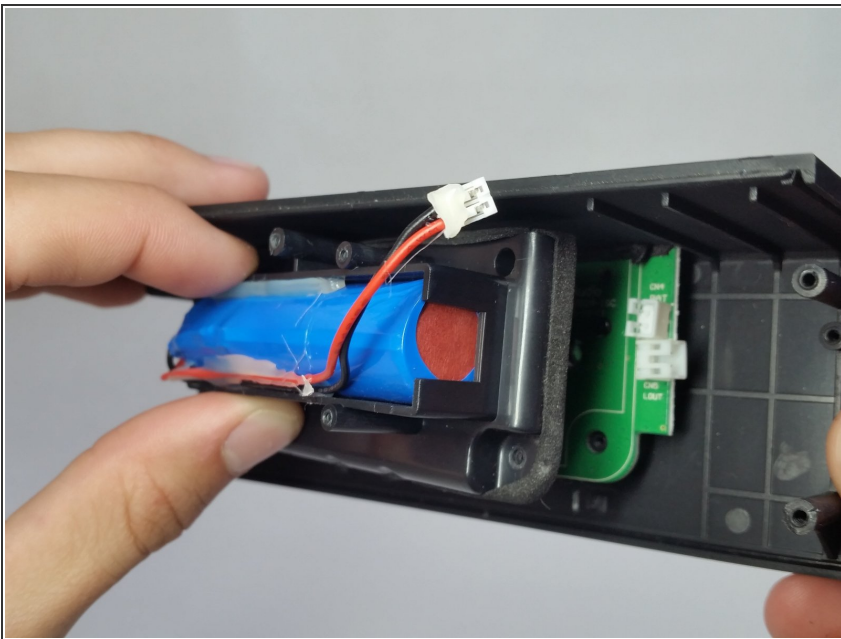
- Remove four 9mm Phillips #0 head screws holding the battery pack in place.

Step 9



- Disconnect the battery cable from the motherboard.

Step 10



- Lift the battery pack from the board.

To reassemble your device, follow these instructions in reverse order.