



PSP 300xc UMD Door Replacement

Has the UMD door on your PSP 3000c seen better...

Written By: Matthew Newsom



INTRODUCTION

Has the UMD door on your PSP 3000c seen better days? Follow this guide to replace it with a shiny new door.

TOOLS:

[Phillips #00 Screwdriver](#) (1)
[Spudger](#) (1)

PARTS:

[Sony PSP 3000 UMD Door](#) (1)

Step 1 — Battery



- Press the button securing the battery door to the PSP 300xc, and lift the battery door off.
- Lift the battery out of the PSP.

Step 2 — Front Case



- Use a spudger or your fingernail to remove the warranty sticker stuck to the inside of the battery tray

Step 3



- Remove four Phillips screws from the back of the PSP.

Step 4



- Remove two Phillips screws from the top of the PSP.

Step 5



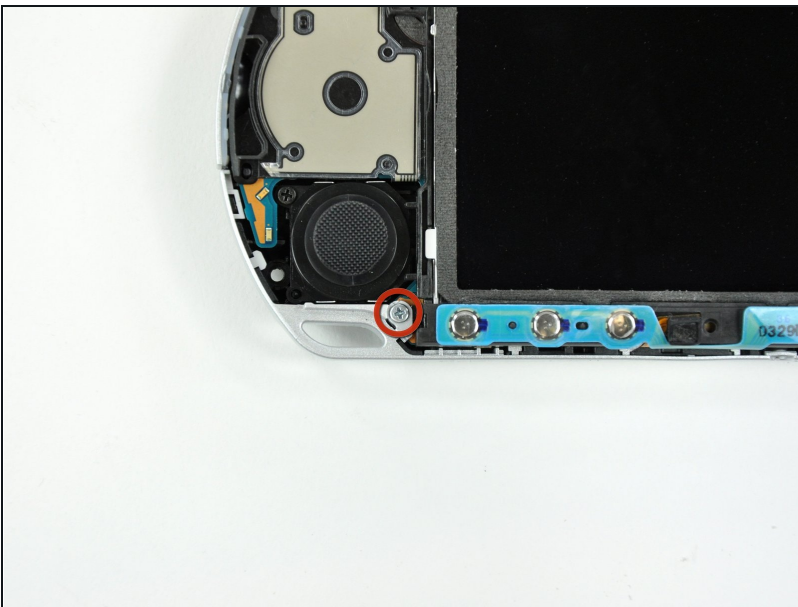
- Remove a single screw from the bottom edge of the PSP.

Step 6



- Insert a spudger between the front case and PSP, and slide the spudger along the perimeter of the front case to remove it.

Step 7 — LCD



- Remove a single Phillips screw securing the home bar to the PSP 300xc.

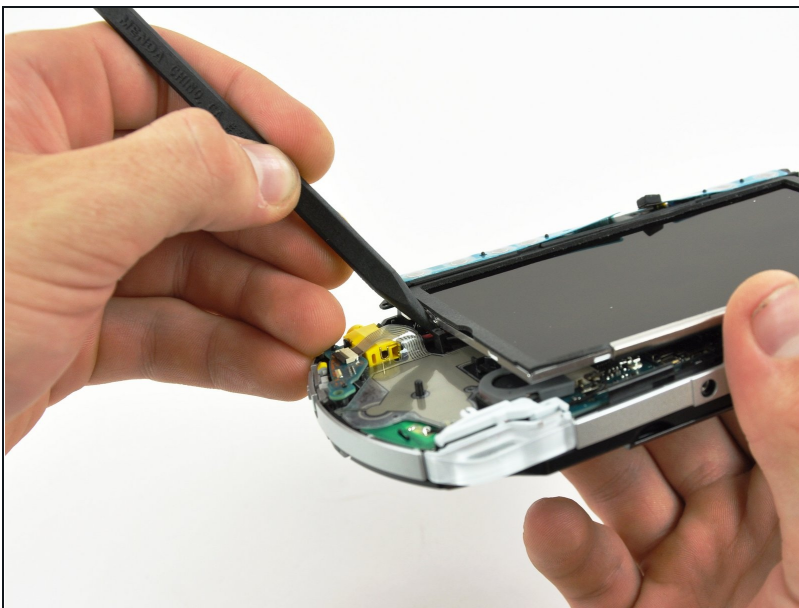
Step 8



- Push the home bar to the right about 1cm to release a tab, and begin to lift the right end of the home bar slightly.

⚠ Do not attempt to remove the home bar yet, it is still attached to the PSP 300xc.

Step 9



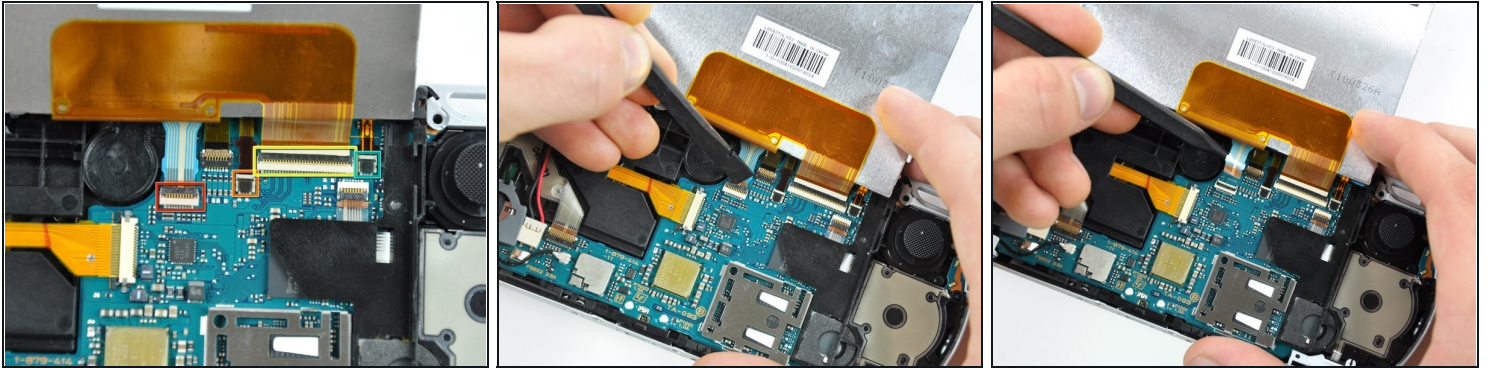
- Insert a spudger under the LCD, beside the black plastic tab.
- Push the LCD to the left and pry up to release the left edge of the LCD from under the plastic tab.

Step 10



- Insert a spudger under the LCD, beside the black plastic tab.
- Push the LCD to the right and pry up to release the right edge of the LCD from under the plastic tab.

Step 11

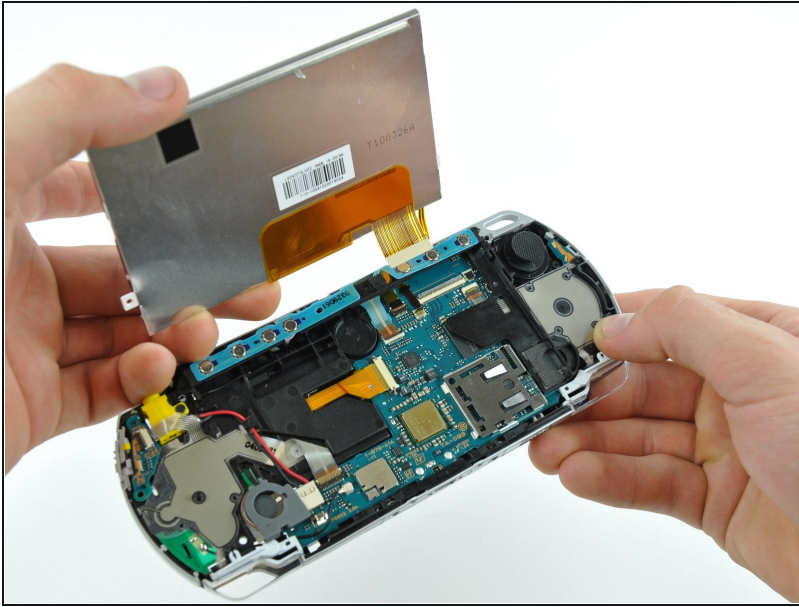


- Rotate the LCD away from the PSP to reveal the LCD and home bar ribbon cables.
- Use your fingernail or the edge of a plastic opening tool to flip up the retaining flap on the following four ZIF connectors:
 - Home bar cable
 - Microphone cable
 - LCD display data cable
 - Touchscreen cable

⚠ Be sure you are prying up on the retaining flap, not the socket itself

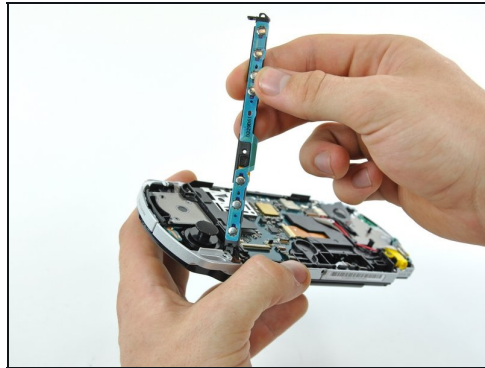
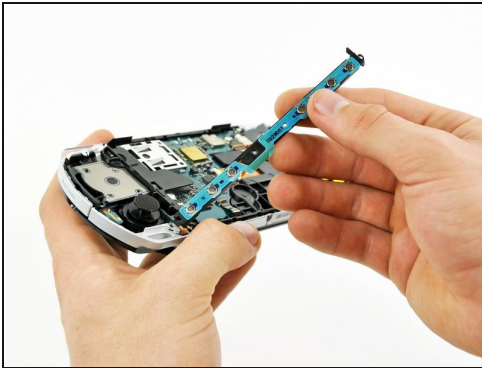
- After flipping up the locking tabs on all four connectors, use your fingers or a spudger to gently pull the cables straight out of the connectors.

Step 12



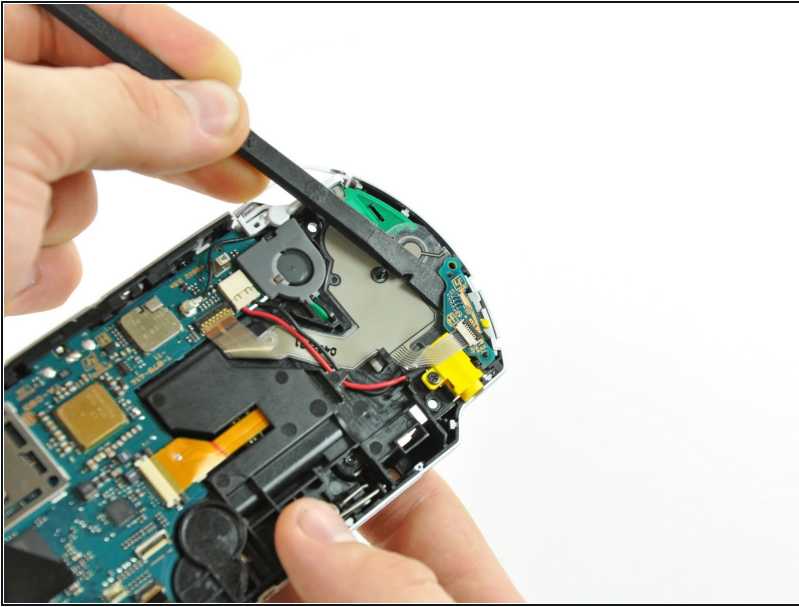
- Remove the LCD from the PSP 300xc.

Step 13 — Home Bar



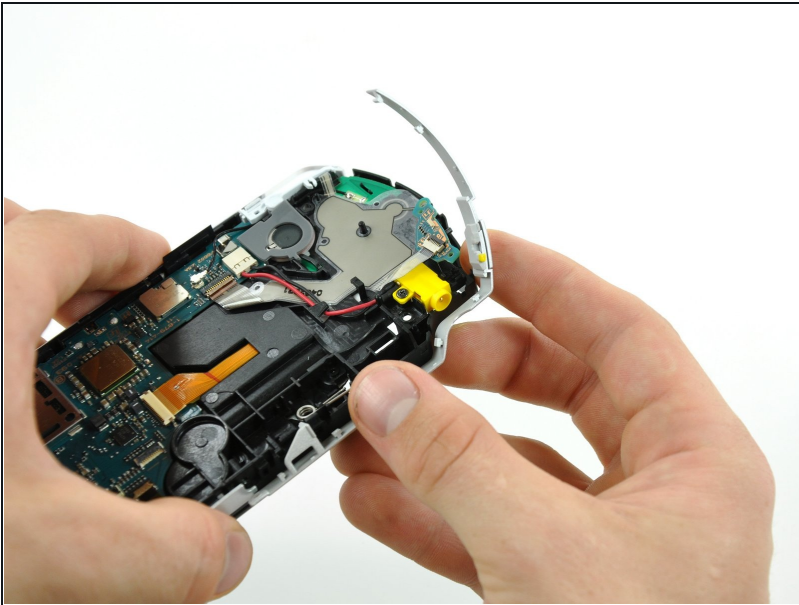
- Lift the home bar up as high as it will go, but not so high that the wires disconnect.
- ⚠ Try to bend the small tab under the silver rim as little as possible in the following steps. The more you bend, the more likely it will snap.
- Twist the home bar counter clockwise while carefully lifting it further. The left edge has to lift over the black plastic frame to allow it to rotate.
 - The home bar should now lift out of the PSP 300xc.

Step 14 — UMD Brace



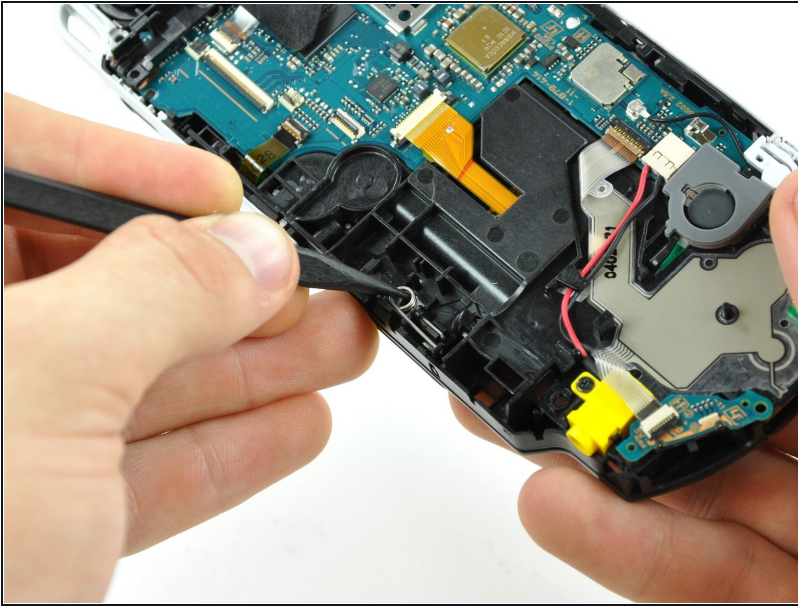
- Using the flat edge of a spudger, pry the power board away from the PSP 300xc.

Step 15



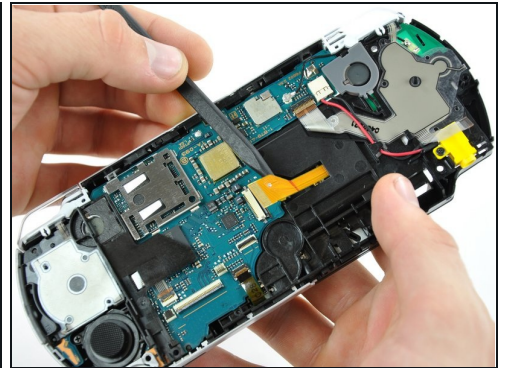
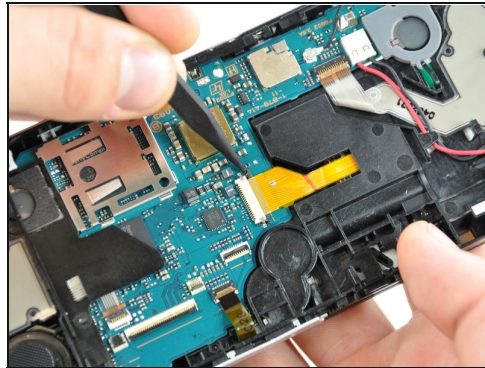
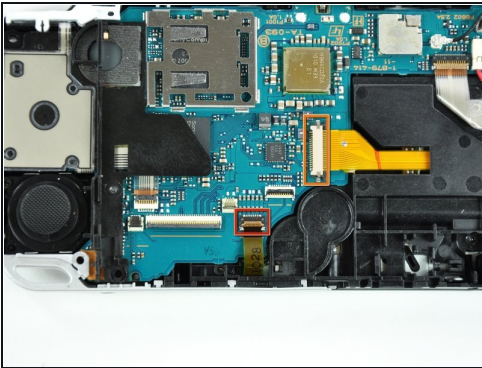
- Lift the right silver rim up and off the PSP 300xc.

Step 16



- Using the pointed end of a spudger, pull the UMD door spring to the left, and remove it from the PSP.

Step 17



- Use your fingernail or the edge of a spudger to flip up the retaining flap on the UMD drive ribbon socket.

⚠ Be sure you are prying up on the retaining flap, not the socket itself

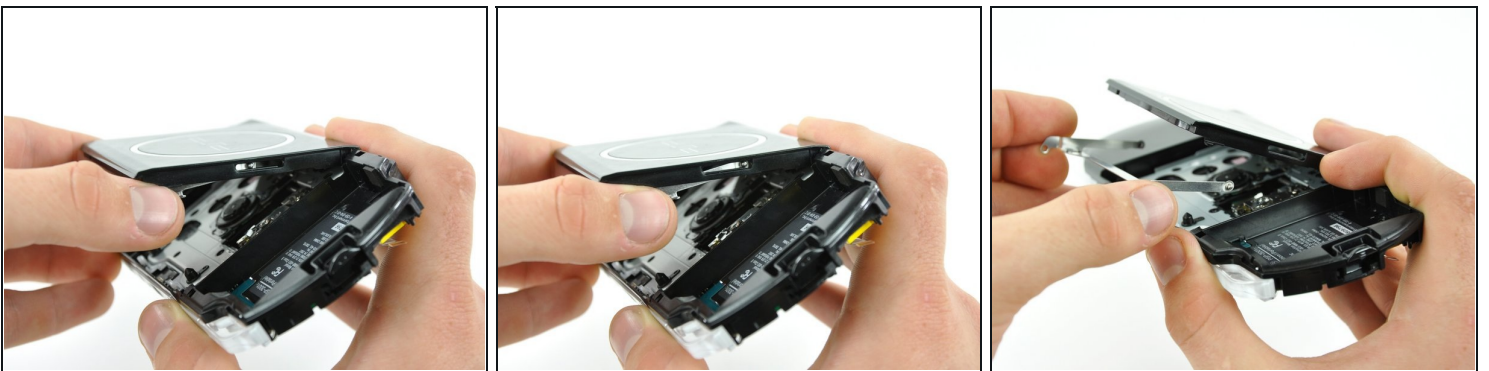
- Use your fingernail or tip of a spudger to push both sides of the black retaining flap on the UMD laser ribbon socket to the right.
- Use a spudger to gently pull both ribbon cables straight out of their sockets.

Step 18



- Flip the PSP 300xc over and open the UMD door.
- Using a pair of [tweezers](#), grab the small rubber square between the metal UMD brace and case, and lift it out of the PSP 300xc.
- Repeat for the rubber square on the other side of the UMD door.

Step 19



- Slide the UMD brace toward the top of the UMD door until the brace disconnects from the door. Remove the brace.

Step 20 — UMD Door



- Bend the PSP 300xc case while pulling up on the right edge of the UMD door until the right edge lifts free.
- Remove the UMD door.

To reassemble your device, follow these instructions in reverse order.