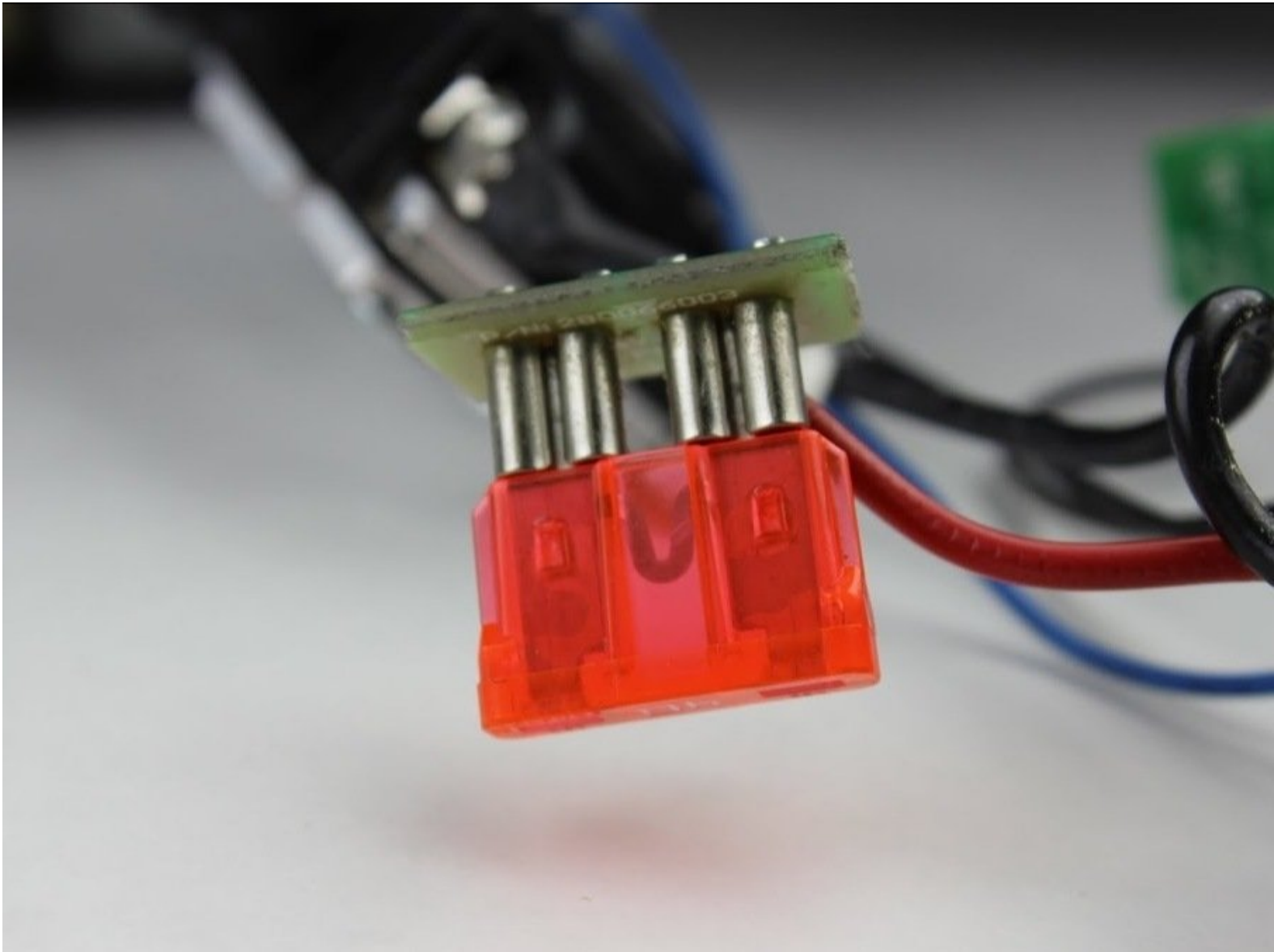




Ridgid R86034 Fuse Cartridge Replacement

Replace a broken fuse

Written By: Tommy Lovelace



INTRODUCTION

If you blow a fuse in the impact driver you only have to open up the device and replace the broken fuse with a new one.



TOOLS:

- [Metal Spudger](#) (1)
 - [T10 Torx Screwdriver](#) (1)
 - [T15 Torx Screwdriver](#) (1)
-

Step 1 — Disassembling Ridgid R86034 Housing



- Use the flat side of a metal spudger to peel the black rubber cover off of the casing.
- ⓘ Use some force; the rubber cover is securely attached to the housing.
- ★ Rotate the casing until it fits onto the housing with no gaps between it and the clear cover.
- ⓘ Orientation is important when putting the rubber cover on the casing.

Step 2



- Remove the plastic cover with your hands.
- ⓘ There is no need to force off the plastic cover. The plastic cover should be much easier to remove than the rubber cover.

Step 3



- Unscrew the four 16 mm long screws from the back panel with a T10 Torx Screwdriver.
- Use a firm grip to peel off the back panel. It is sealed tight and requires a good amount of force to remove.

Step 4



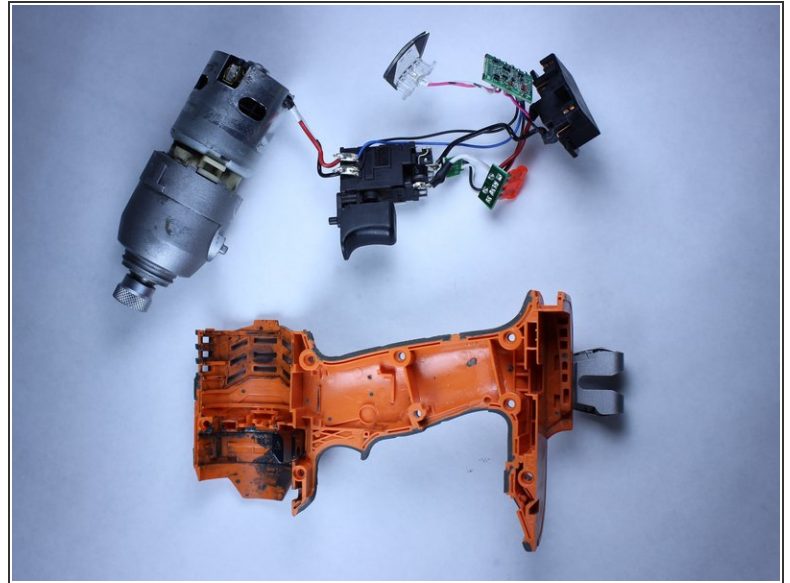
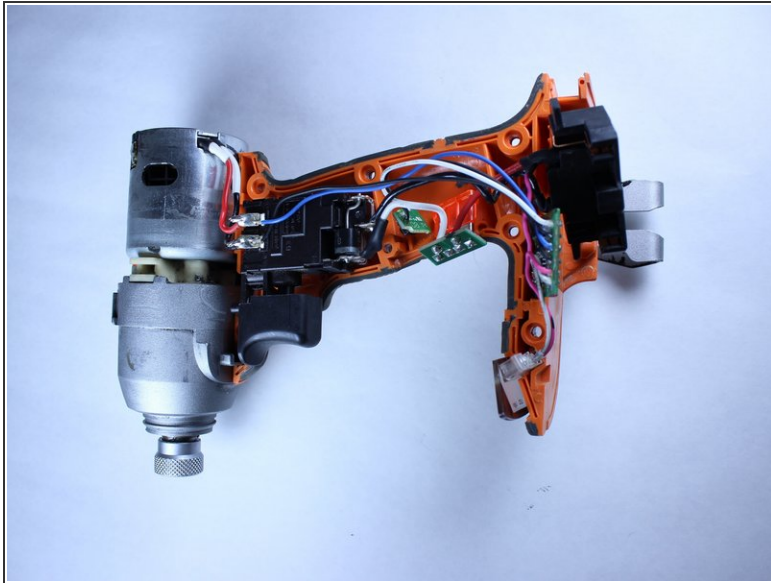
- Unscrew the eight 15 mm T10 Torx screws from the housing
- ⓘ The screw hole located nearest the battery port is deep and small. Most screwdrivers with replaceable bits will **not** fit into the hole. Instead, use a conventional screwdriver that fits.

Step 5



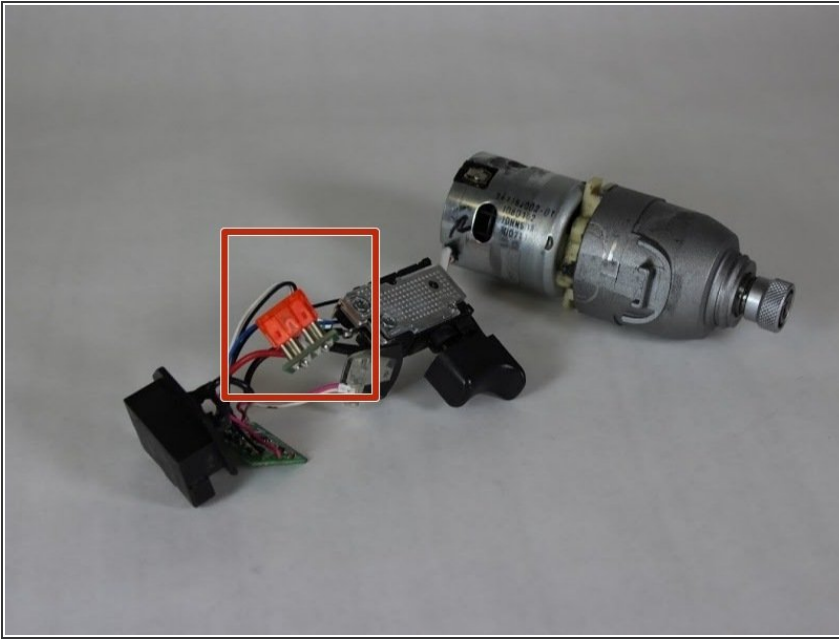
- ⚠ Place the driver flat on a table before completely separating the two halves of the housing so components of the drill don't fall out during opening.
- Pry apart the two halves of the housing at the back side of the driver using the metal spudger.
- ⓘ The housing is easier to remove if you pry from multiple sides.

Step 6



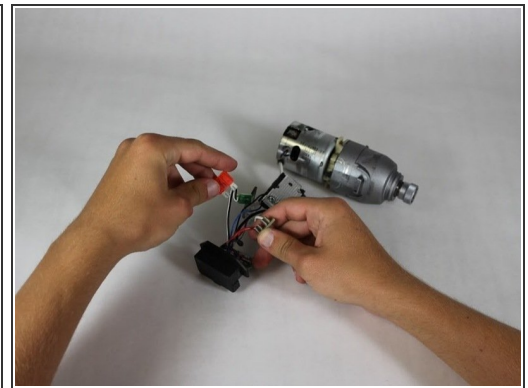
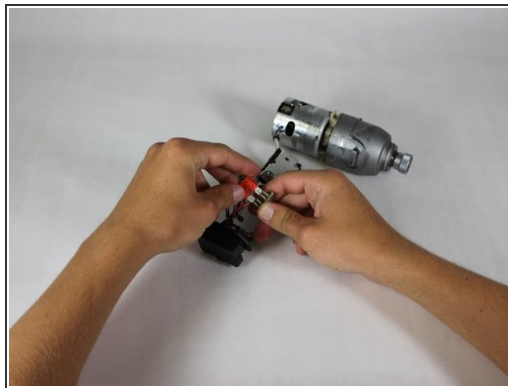
- ⚠ Do not remove the direction switch.
- Pull out **all** electrical components from housing by hand.
 - Lift out the motor.
 - Follow the wires.
- ⓘ The components should come out of their respective slots with ease and require little force to lift out.
- ⚠ The circuit board located nearest the battery pack and the LED light will be hard to pull out.
- 📌 Remember to precisely place all components in their correct slots with their correct orientations when reassembling.

Step 7 — Fuse Cartridge



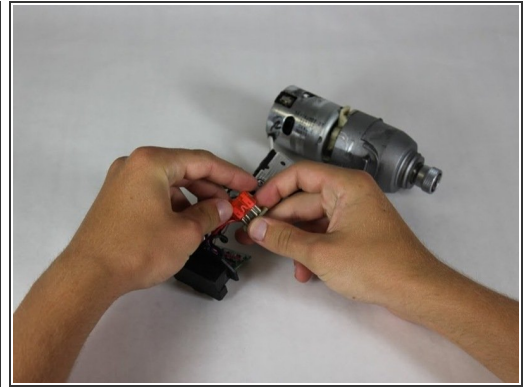
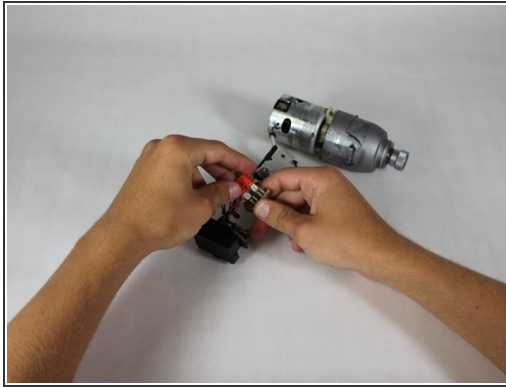
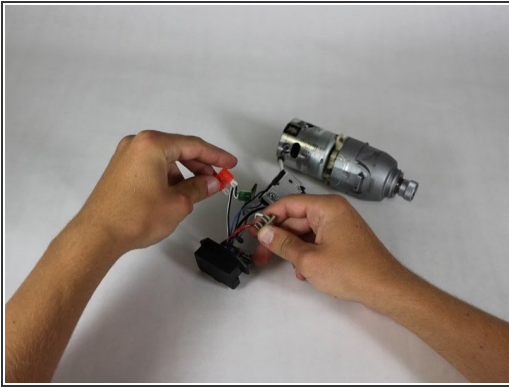
- Identify the translucent orange fuse cartridge connected by a thick red wire and a thick white wire.

Step 8



- Firmly grasp the orange fuse cartridge and pull it out of its socket.
- i** The fuse does not come out easy, don't be afraid to pull hard to get it to come out.

Step 9



- Insert the new fuse cartridge.

To reassemble your device, follow these instructions in reverse order.