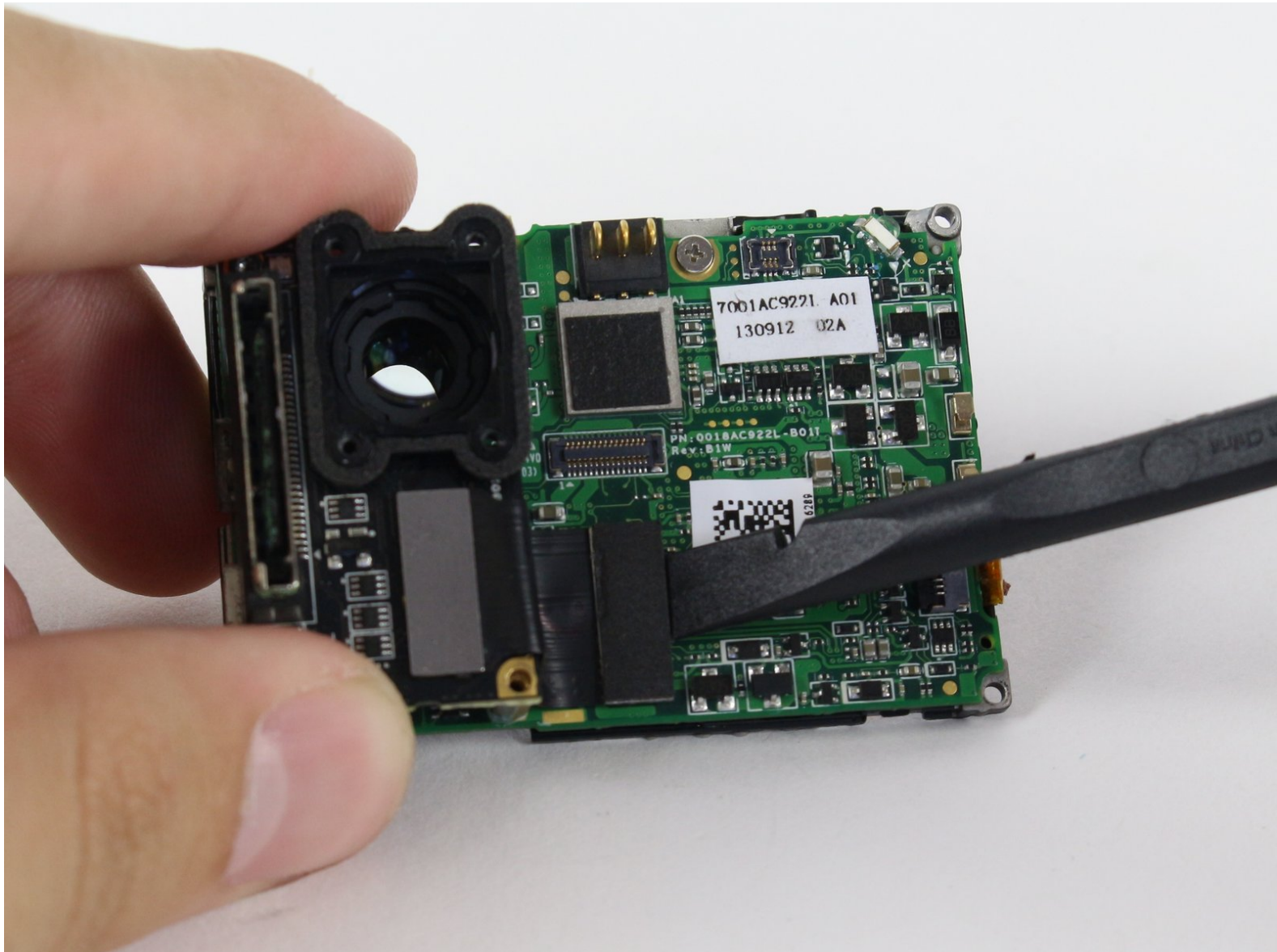




# GoPro Hero 3 Silver Expansion Port Replacement

These simple steps will explain to remove and replace your GoPro's media Adapter.

Written By: Brian Alvarez





## TOOLS:

- [T4 Torx Screwdriver](#) (1)
- [Phillips #00 Screwdriver](#) (1)
- [Spudger](#) (1)
- [iFixit Opening Tools](#) (1)



## PARTS:

- [GoPro Hero3 Silver Expansion Port](#) (1)
- [GoPro Hero3 Silver Front Panel](#) (1)

## Step 1 — Battery



- Pull back on the tab on the back of GoPro to open the battery cover.

## Step 2



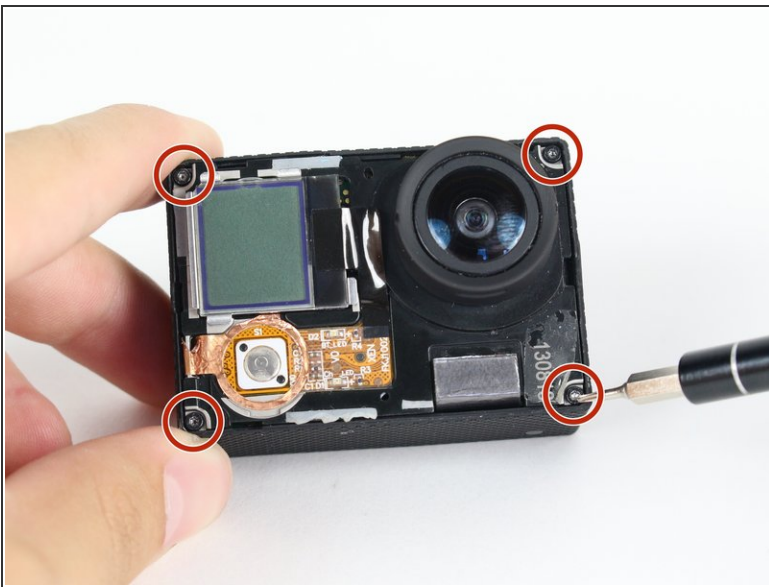
- Pull the battery out using the tab.

### Step 3 — Expansion Port



- Use the plastic opening tool to remove the faceplate.
- There is some adhesive and clips so be careful and the faceplate should pop right off.

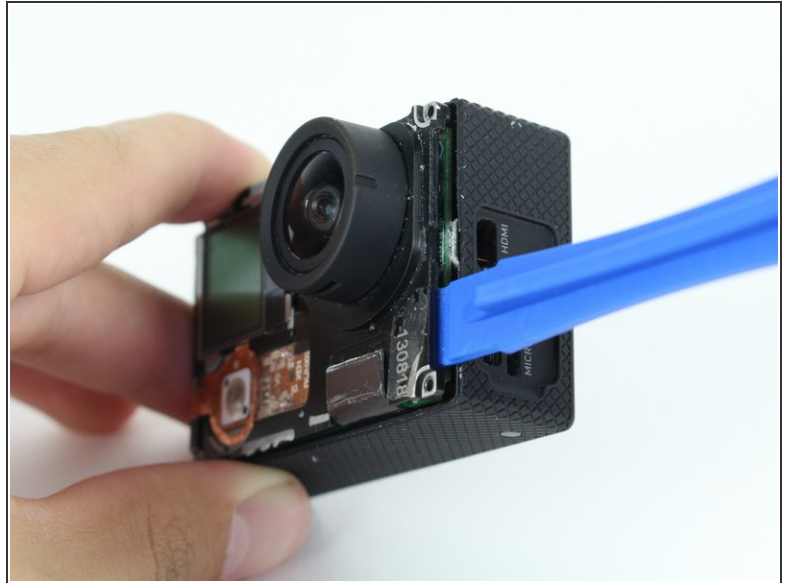
### Step 4



- Now that the faceplate is off, it is time to remove the 4 screws on each corner.
- Use the T4 tool bit from the iFixit toolkit in order to remove the 4 screws on each corner.

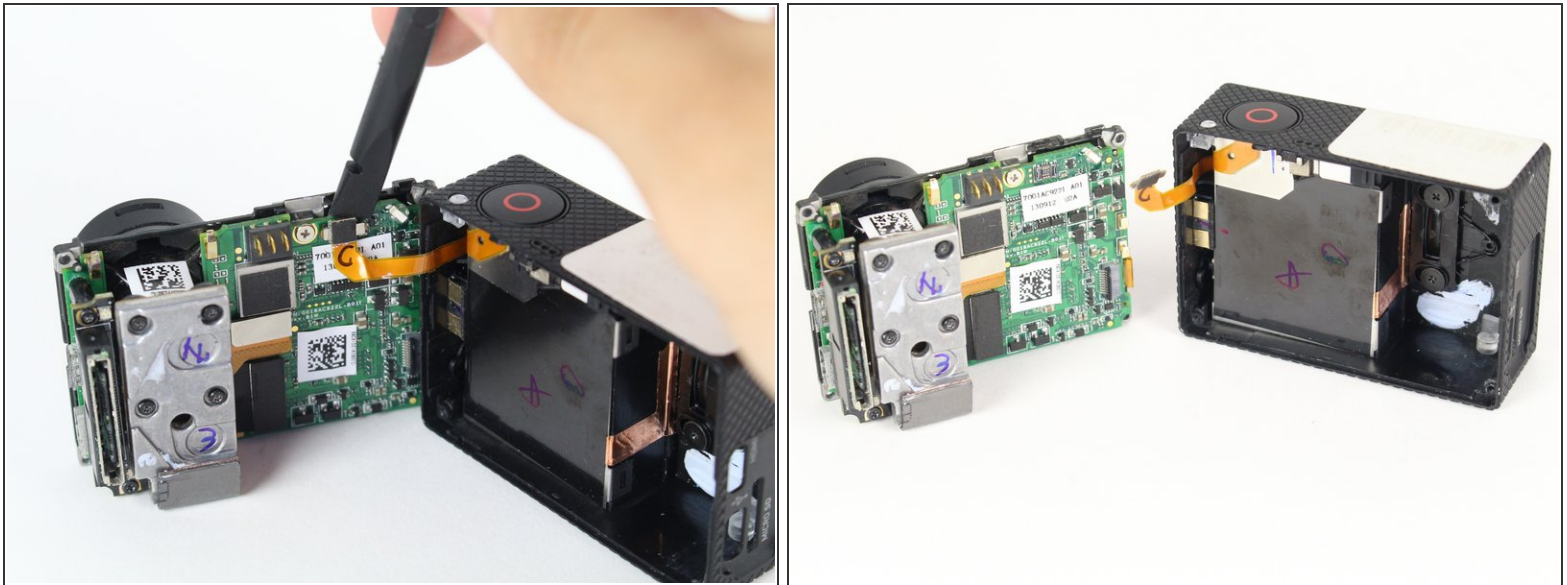


## Step 5



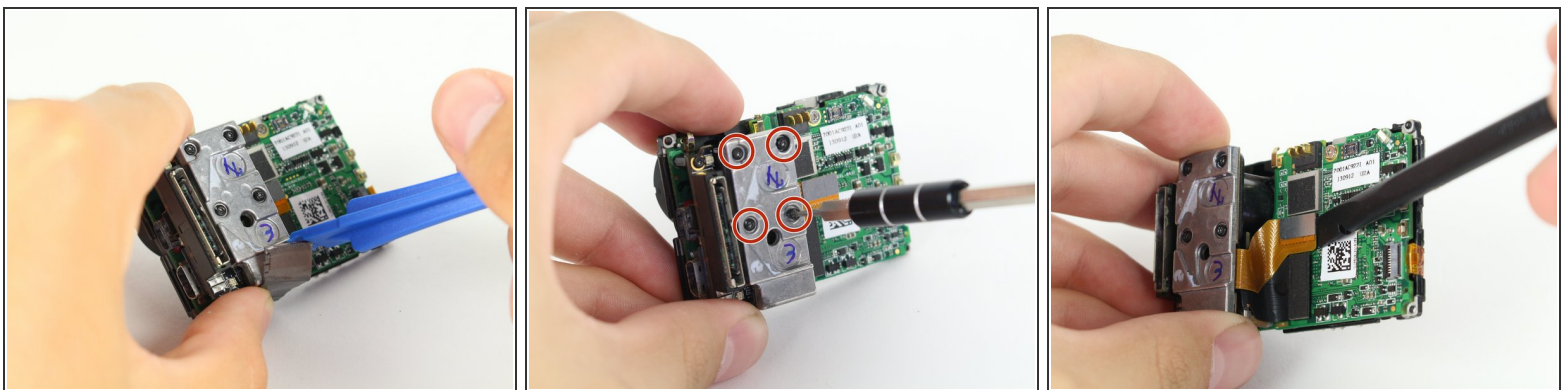
- Note: Make sure you remove the door cover of the USB, mini HDMI, and SD port before. Separating the motherboard will be easier.
- Using the plastic opening tool, slowly pry open the motherboard assembly.

## Step 6



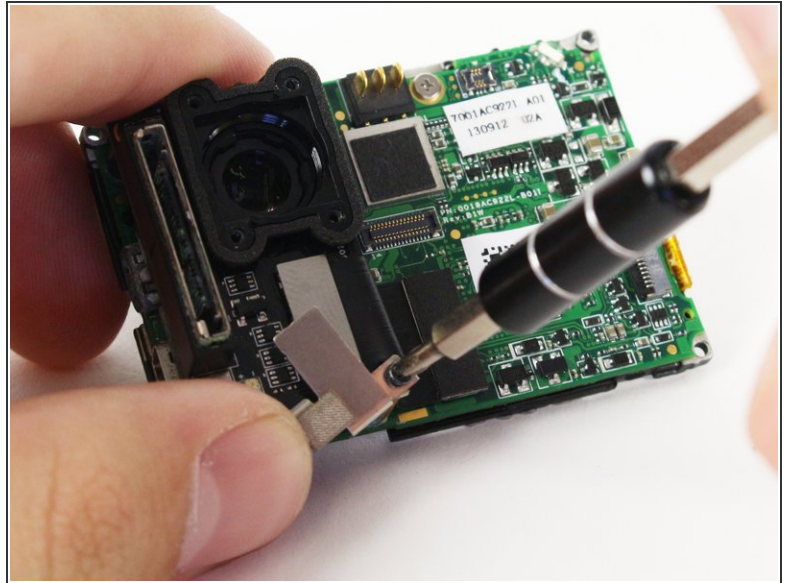
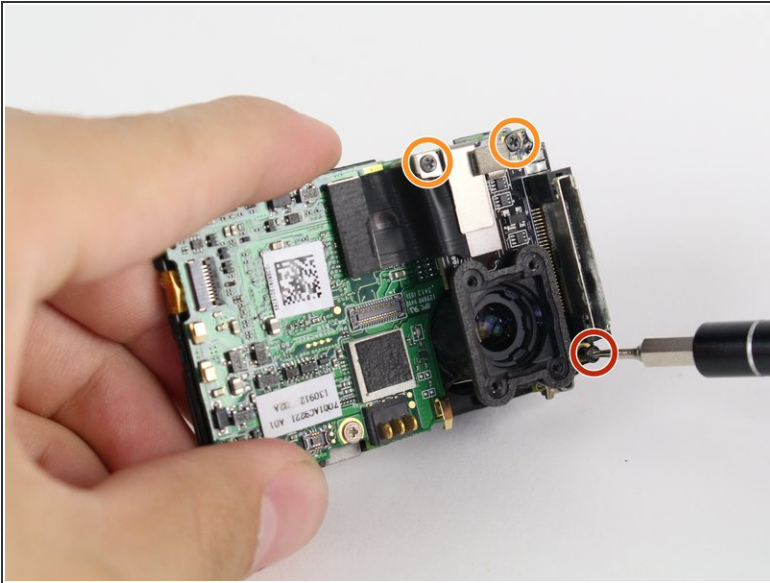
- Use the spudger to gently pry off the connector of the housing to the motherboard.
- You should now have the motherboard assembly and the housing separated.

## Step 7



- Use the spudger to remove the heat shield tape and detach the image sensor from the motherboard.
- Using the T4 Torx toolbit, remove the 4 screws that connect the sensor to the lens.
- Remove the silver connector of the image sensor from the motherboard using the spudger to pry it off.

## Step 8

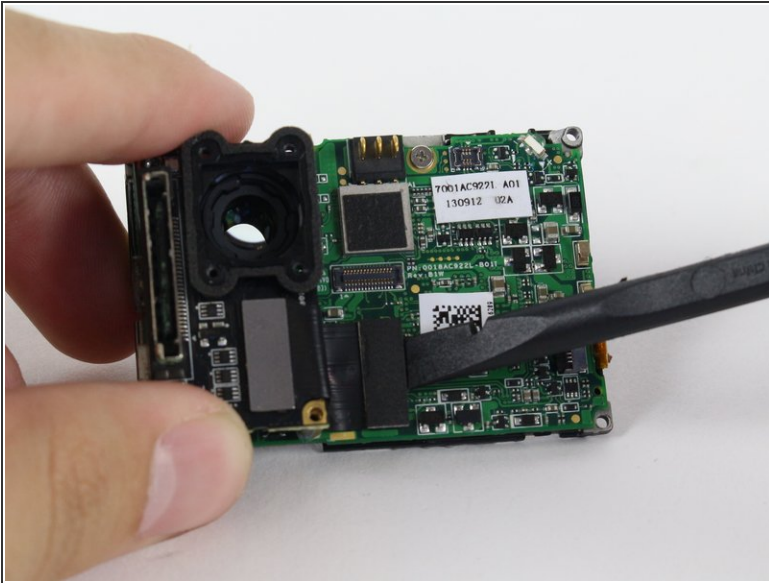


- The media adapter is attached to the motherboard via 3 screws:

- x1 T4 Torx
- x2 Phillips #00

⚠ There is a little silver bracket (in the yellow circle) that is held down by the Phillips #00 screw so be careful not to lose it.

## Step 9



- With a little prying, use the spudger to detach the media adapter's connector from the motherboard.
- Remove the media adapter from the motherboard.

To reassemble your device, follow these instructions in reverse order.