



# Olympus Stylus Tough 6020 Lens Replacement

Lens Replacement

Written By: Violeta



---

# INTRODUCTION

This will guide you step by step how to replace the Lens of the Olympus Stylus Tough 6020.

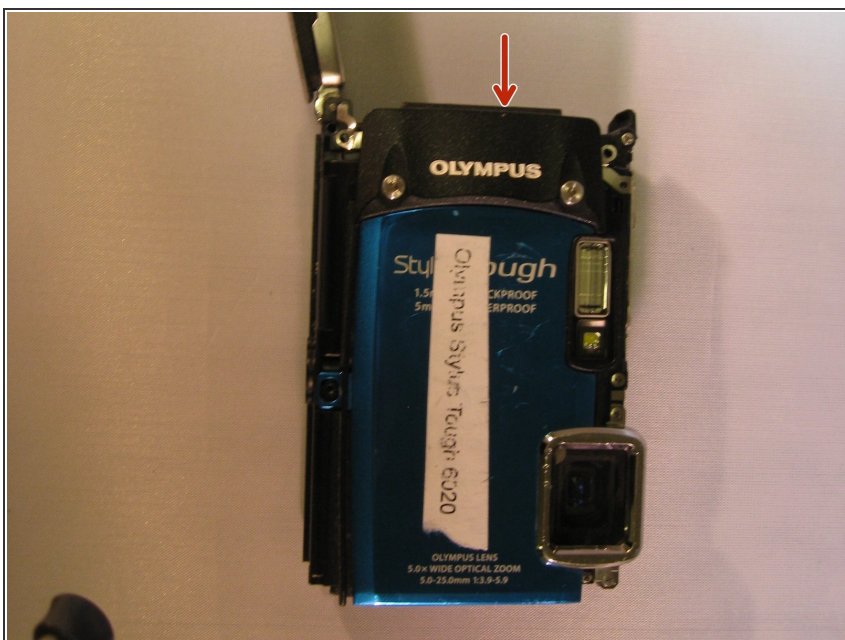
---



## TOOLS:

- [Phillips #00 Screwdriver](#) (1)
  - [Spudger](#) (1)
-

## Step 1 — Battery



- Slide and push the battery casing to open it.
- Push the battery to eject it.

## Step 2 — Bottom Plating



- Turn the camera so that you are facing the bottom of the camera.
- Using a Phillips 00 screwdriver, unscrew the three 3.9mm screws on the bottom of the camera.
- Using a spudger, pry off the plating on the bottom of the camera.

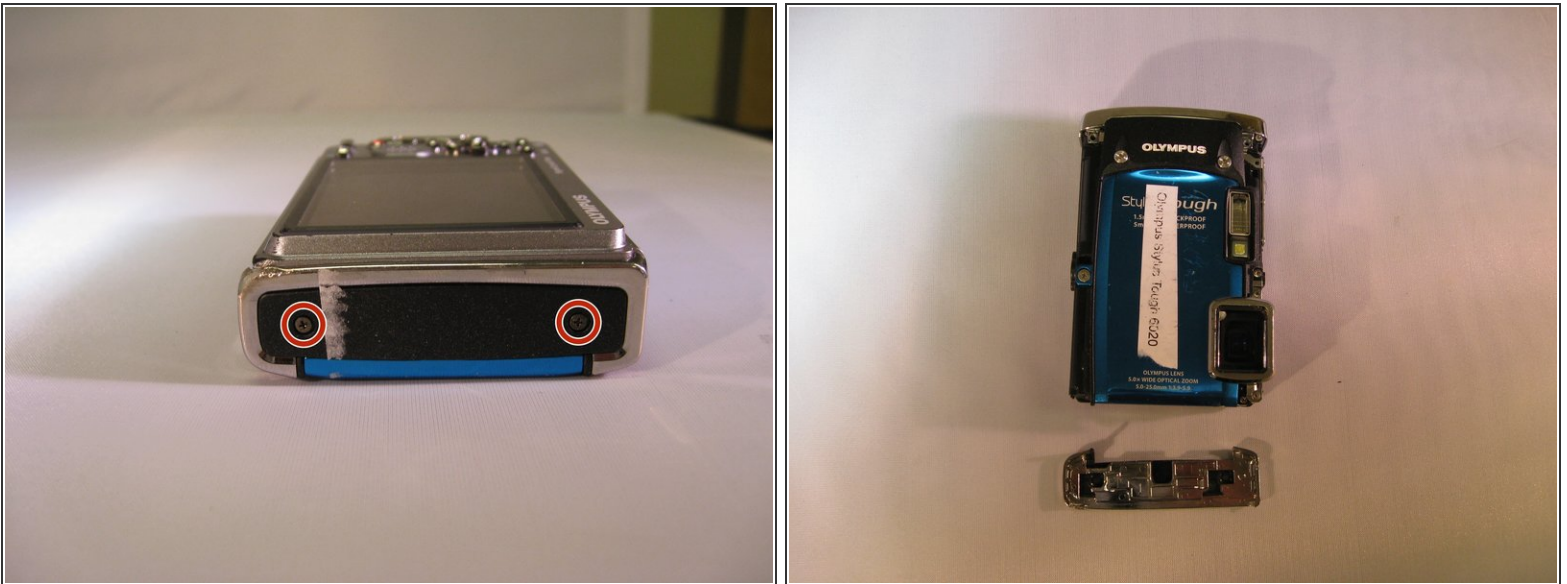


### Step 3 — Top Plating



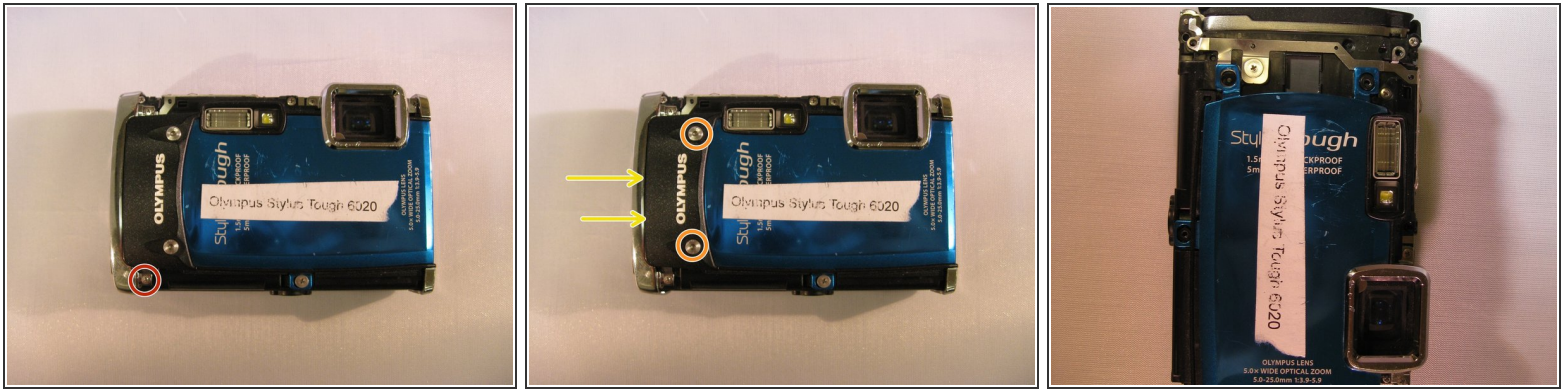
- Turn the camera so that you are facing the top of the camera.
- Using a Phillips 00 screwdriver, unscrew the three 3.9mm screws located on the top of the camera.
- Using a spudger, pry off the plating on the top of the camera.

### Step 4 — Left Plating



- Turn the camera so the LCD is facing upwards.
- Using a Phillips 00 screwdriver, unscrew the two 3.9mm screws located on the left side of the device.

## Step 5 — Black "Olympus" Face Plate



- Using a Phillips 00 screwdriver, unscrew the 3.9mm screw located next to the black "Olympus" face plate.
- Using a T6 Torx screwdriver, unscrew the two 3.5mm screws located on the black "Olympus" face plate.
- Using a spudger, gently pry off the black "Olympus" face plate.

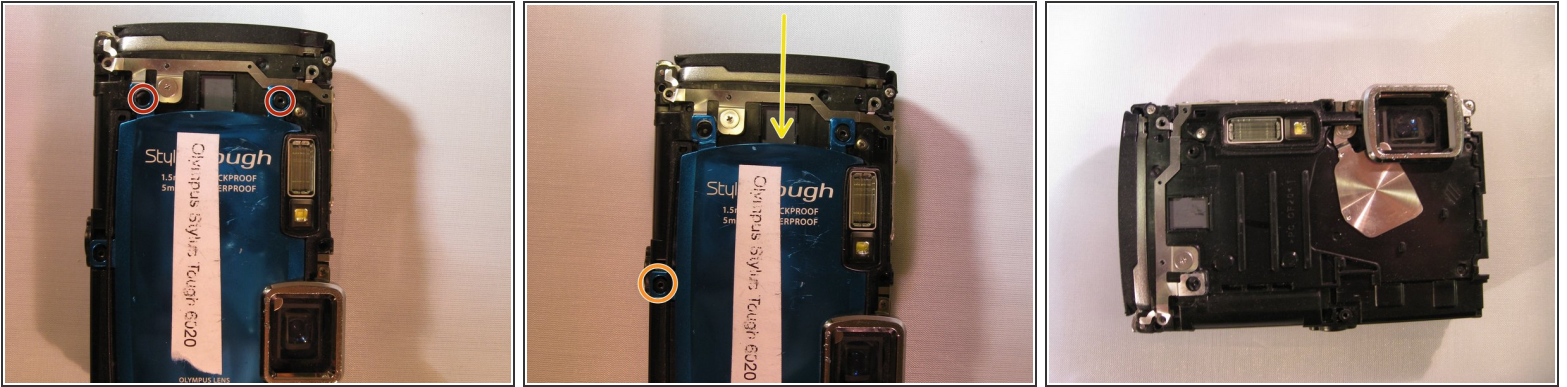
## Step 6 — End Casing



- Using a Phillips 00 screwdriver, unscrew the two 3.9mm screws to the right of the cursor pad on the U-shaped frame.
- Turn the device over so the front of the camera is facing you.
- Using a Phillips 00 screwdriver, unscrew the two 3.9mm screws on the end casing.
- Using a spudger, pry off the end casing.



## Step 7 — Blue Face Plate



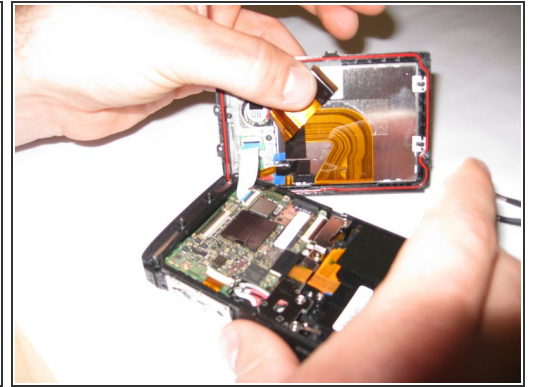
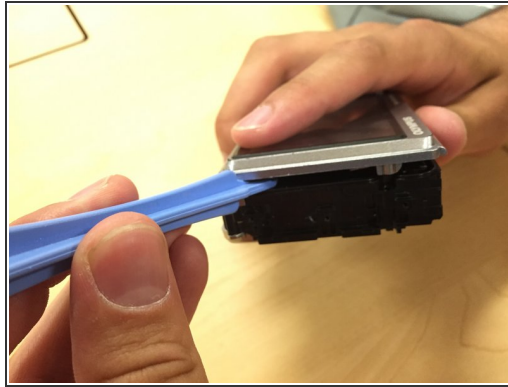
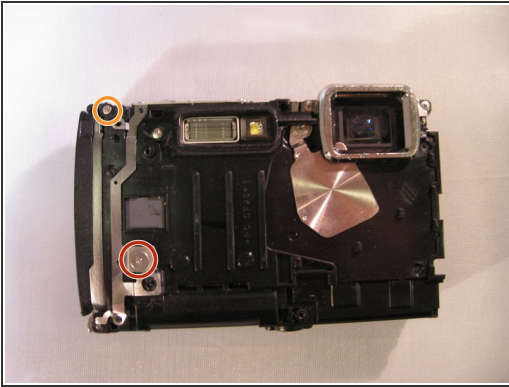
- Turn the camera so the blue face plate is visible.
- Using a Phillips 00 screwdriver, unscrew the two 3mm screws on the blue plate.
- Using a Phillips 00 screwdriver, unscrew the 3.9mm screw located at the bottom of the camera straight down from the flash.
- Using a spudger, gently pry off the blue face plate.

## Step 8 — Back Plate



- Using a Phillips 00 screwdriver, unscrew the 9mm screws on the top of the camera to the right of the flash.

## Step 9



- Using a Phillips 00 screwdriver, unscrew the wide 3.5mm screw located in the middle of the camera.
- Using a Phillips 00 screwdriver, unscrew the 9mm screw located at the top left corner of the camera.
- Using a spudger, separate the black plate from the camera.

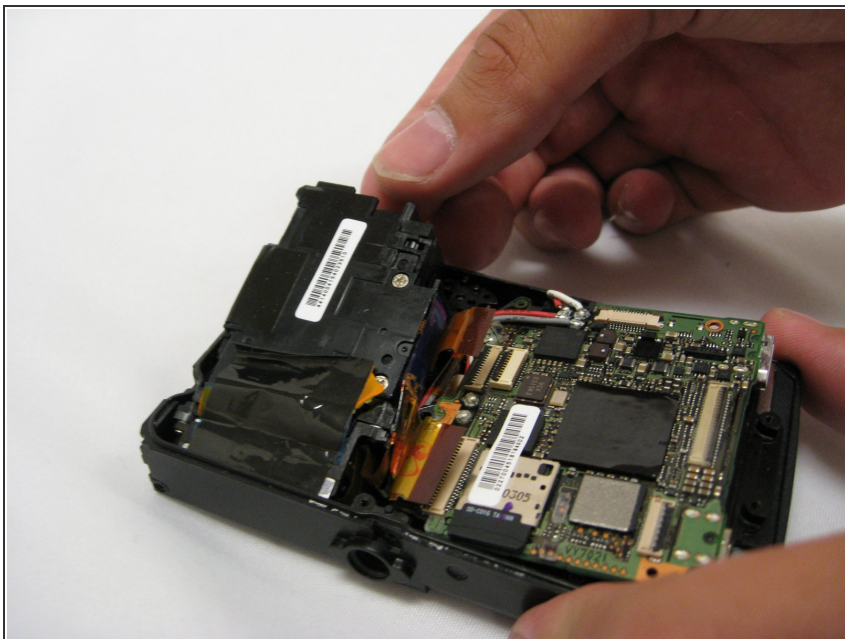
## Step 10 — Lens



- Unscrew screws on place holder plates

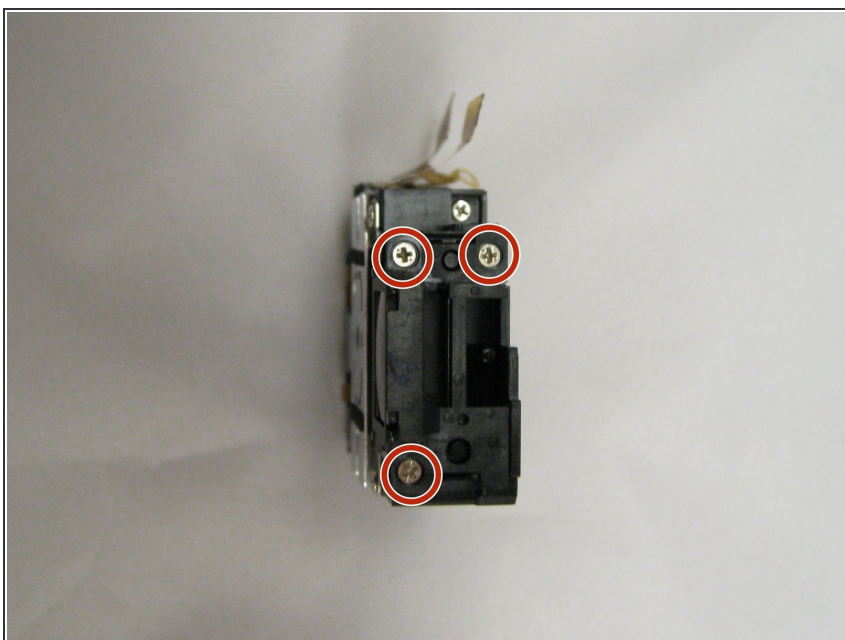


## Step 11



- Gently lift Lens compartment out of device.

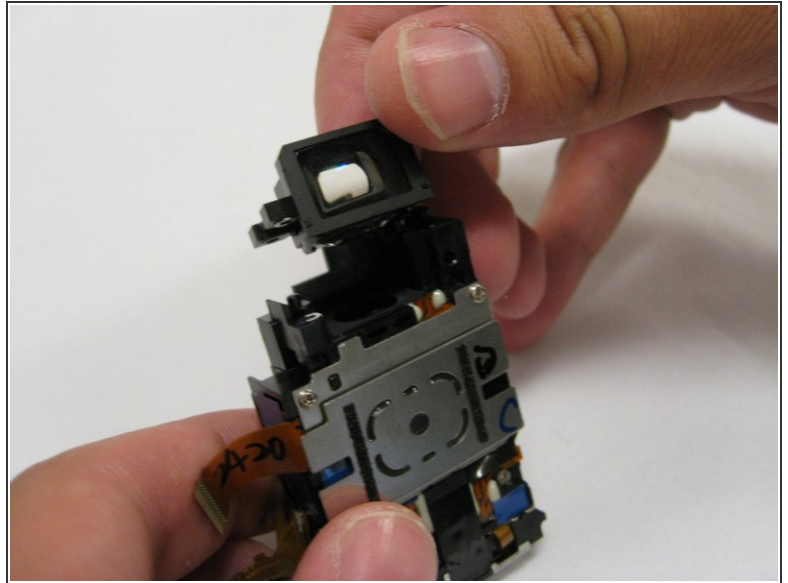
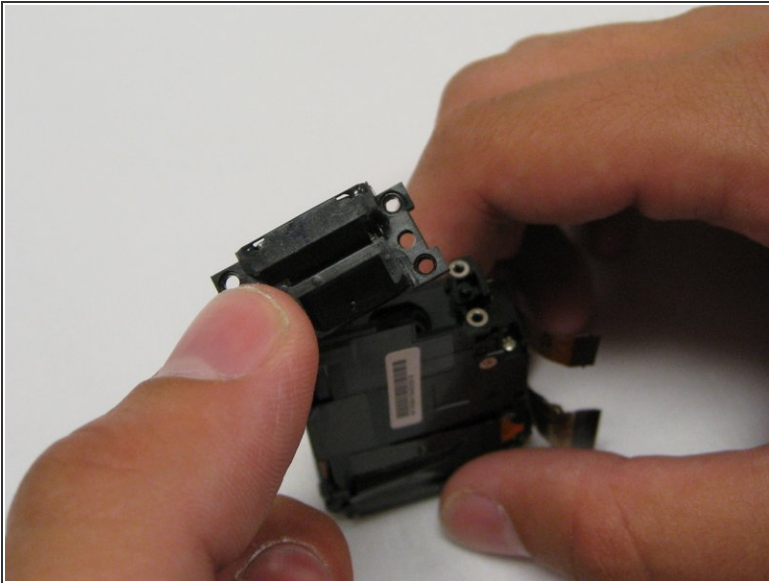
## Step 12



- From top view, unscrew 3 screws
- Do not worry about the screw on top of the 2 screws.



## Step 13



- Lens comes off

To reassemble your device, follow these instructions in reverse order.