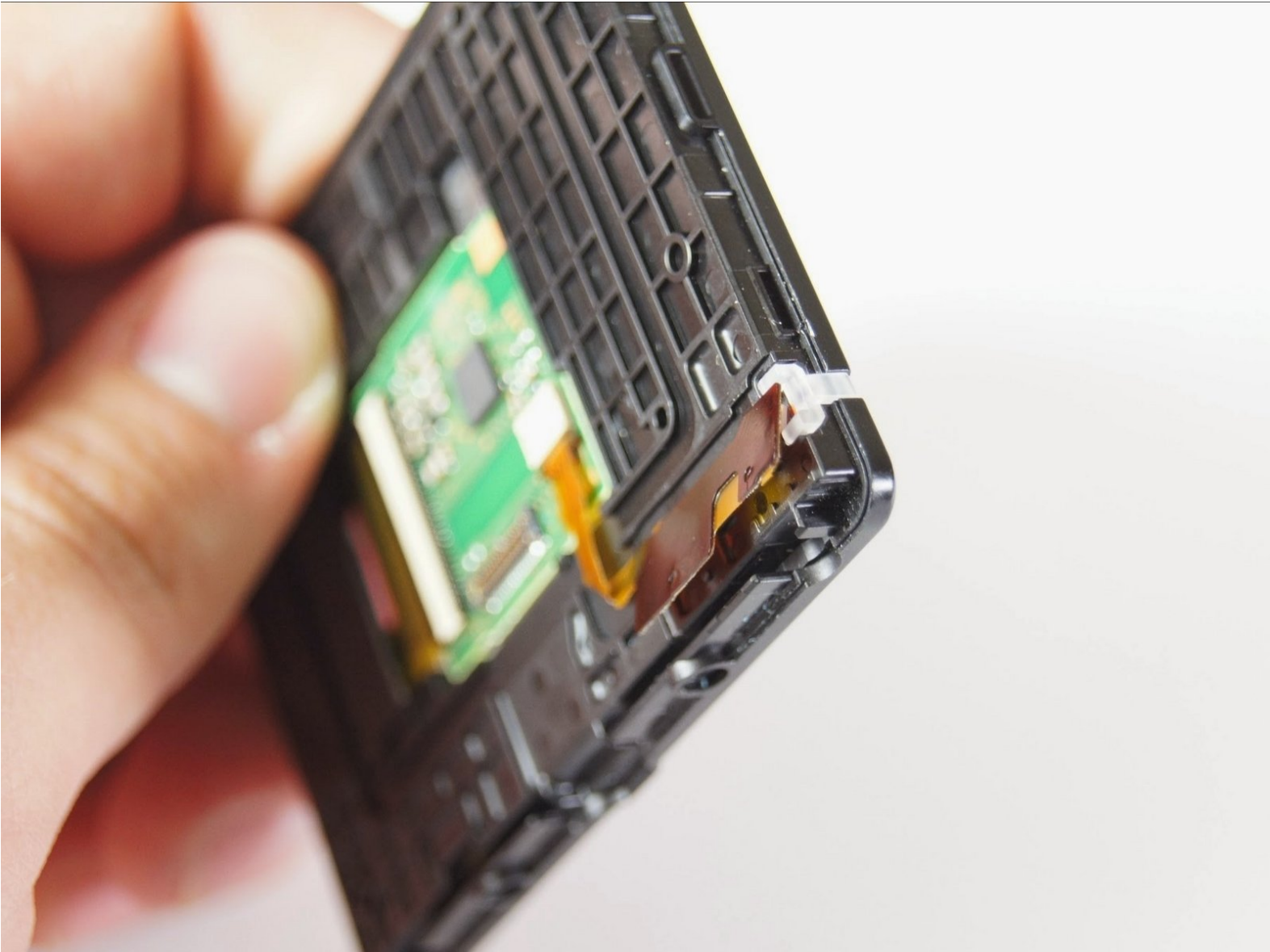




Sony SLT Alpha-65V LCD Screen Replacement

How to replace the LCD screen on the back of the Alpha 65 camera with a new one.

Written By: Alexander Lisso



INTRODUCTION

This guide will show you how to unscrew the LCD screen housing from the back of the camera and disconnect the screen's circuitry from the circuitry of the rest of the camera. This requires using a Phillips #00 screwdriver and a plastic opening tool to remove the screen. It is very helpful to use a magnetic pad to organize and keep track of all the screws removed from the camera.



TOOLS:

- [iFixit Opening Tools](#) (1)
- [Phillips #00 Screwdriver](#) (1)
- [Phillips #000 Screwdriver](#) (1)



PARTS:

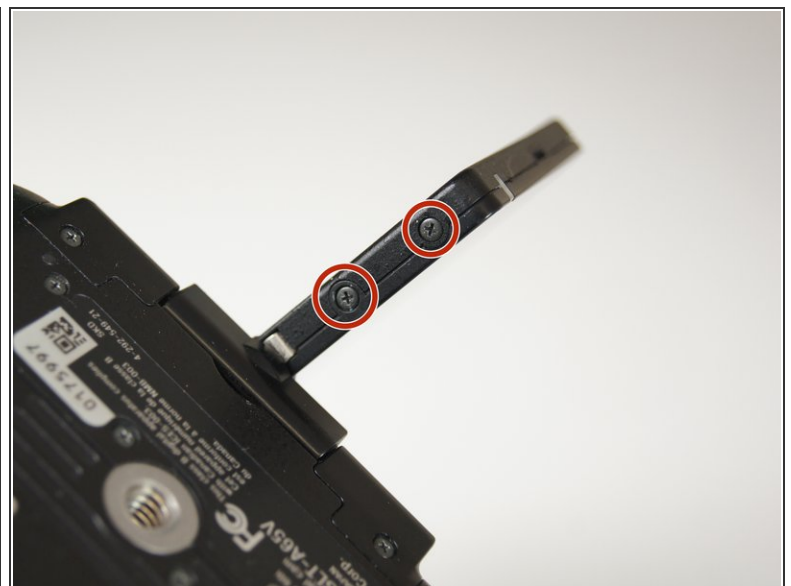
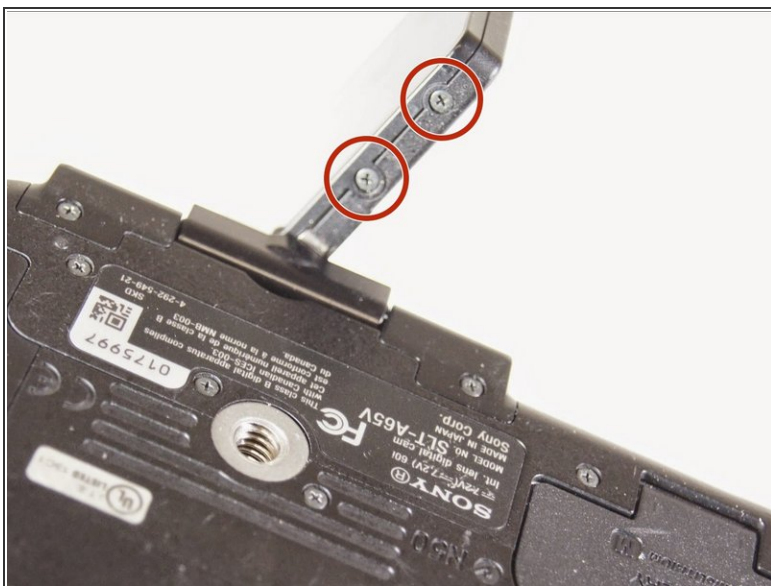
- [Sony Alpha 65 LCD Screen](#) (1)

Step 1 — LCD Screen



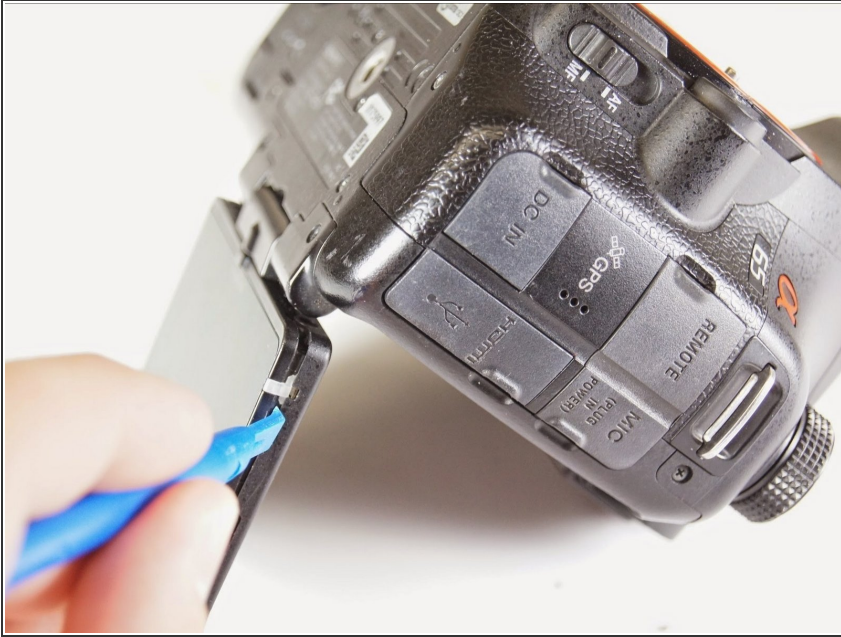
- Remove the two 4.0 mm Phillips #00 screws on the base of the camera.
- Remove the 3.0 mm Phillips #00 screw on the hinge of the screen.

Step 2



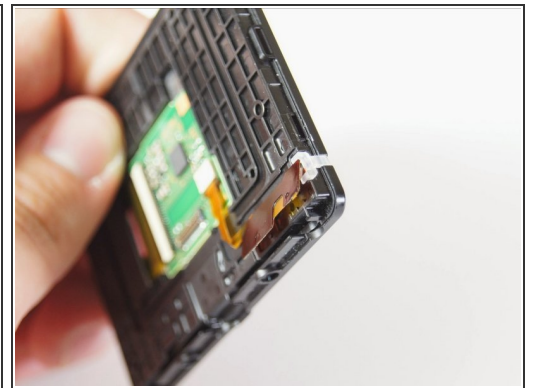
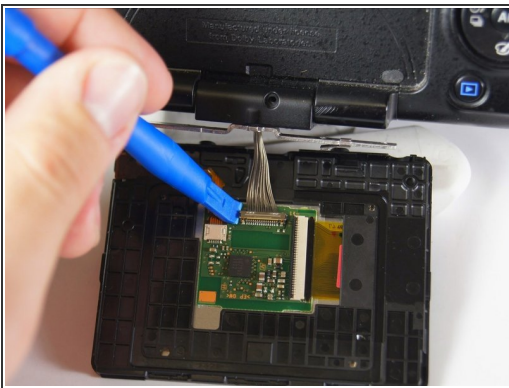
- Remove the two 2.0 mm Phillips #00 screws on the bottom-right side of the screen.
- Remove the two 2.0 mm Phillips #00 screws on the bottom-left side of the screen.


Step 3



- Use the plastic opening tool to gently pry the screen open around the entire screen.

Step 4



 The brown ribbon and white light on the edge of the screen are extremely loose and will fall off off. Keep the screen flat at all times to make sure they don't come out.

- Use a plastic opening tool to disconnect the silver wires from the screen's circuitry and completely remove the screen from the camera.

To reassemble your device, follow these instructions in reverse order.