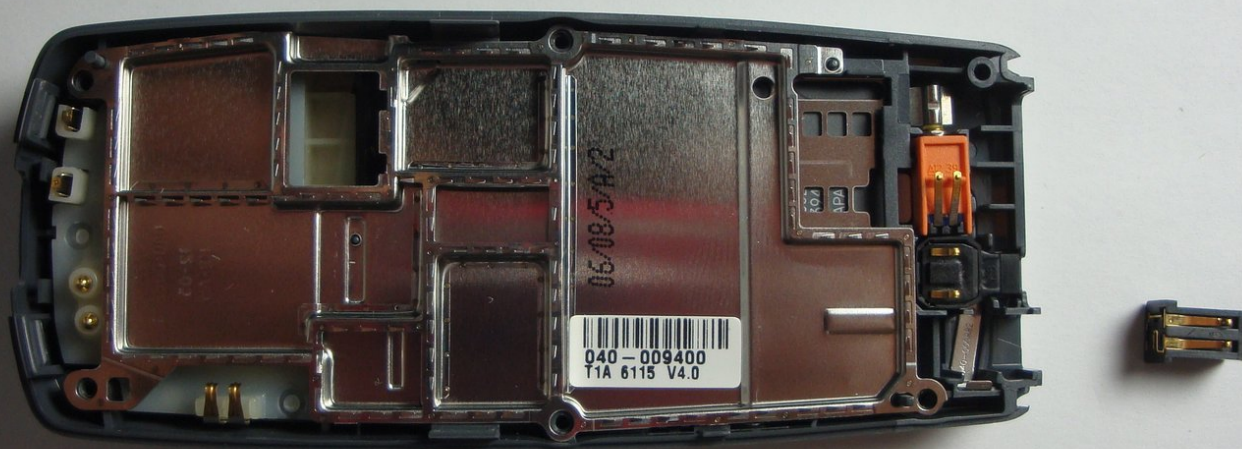




Nokia 2128i Charging Port Replacement

This guide will show how to access and remove the charging port of your phone.

Written By: Curtis Lutje



INTRODUCTION

If the phone will not take a charge and it is not a battery related issue, change the charging port.



TOOLS:

- [iFixit Opening Tools](#) (1)
 - [T6 Torx Screwdriver](#) (1)
-

Step 1 — Battery



- Be sure cell phone is off before you begin to disassemble the phone.
- Press the button on the bottom of the back of the cell phone.
- Slide rear panel down and remove it.

Step 2



- Using your fingernail, pry the back of the battery upwards and pull out.

Step 3 — Faceplate



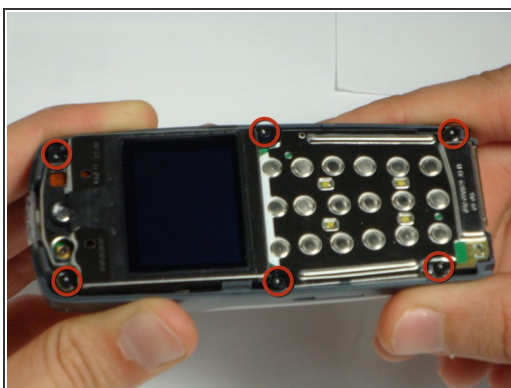
- Insert the plastic opening tool under the faceplate.
- Separate the faceplate from main body by twisting the prying tool with some force.
- The faceplate is held by three plastic fasteners, so pry evenly on both sides of phone.

Step 4 — Keypad



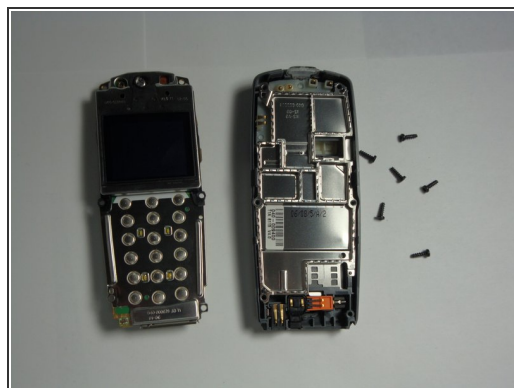
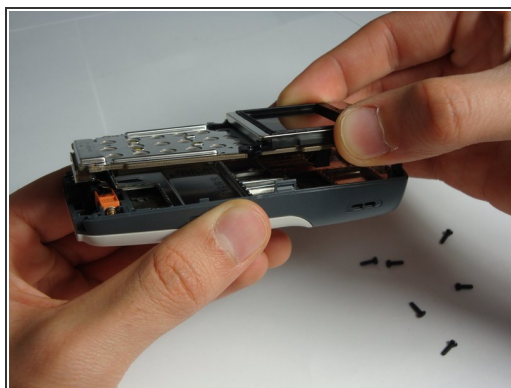
- With the faceplate removed, simply peel off rubber key pad and remove.

Step 5 — Motherboard Assembly



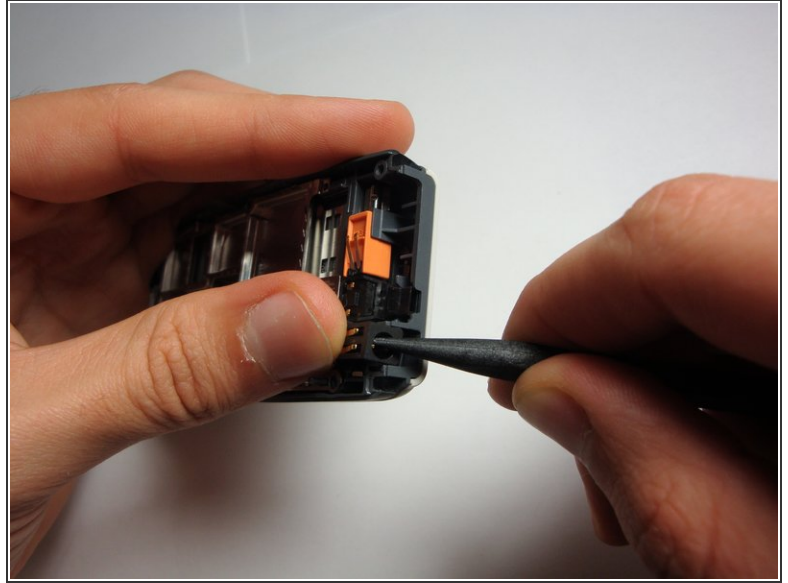
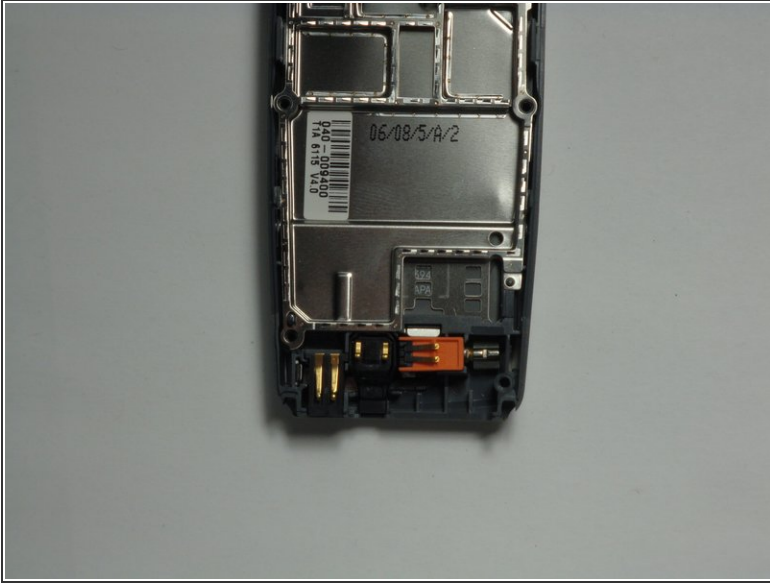
- Locate and remove the six screws on the front of the phone using a T6 Torx.
- All 6 screws are 6.9mm long.

Step 6



- After removing screws, lift the motherboard assembly straight off the cell phone body.

Step 7 — Charging Port



- With the logic board and LCD unit removed, gently pry out the charging port.

To reassemble your device, follow these instructions in reverse order.