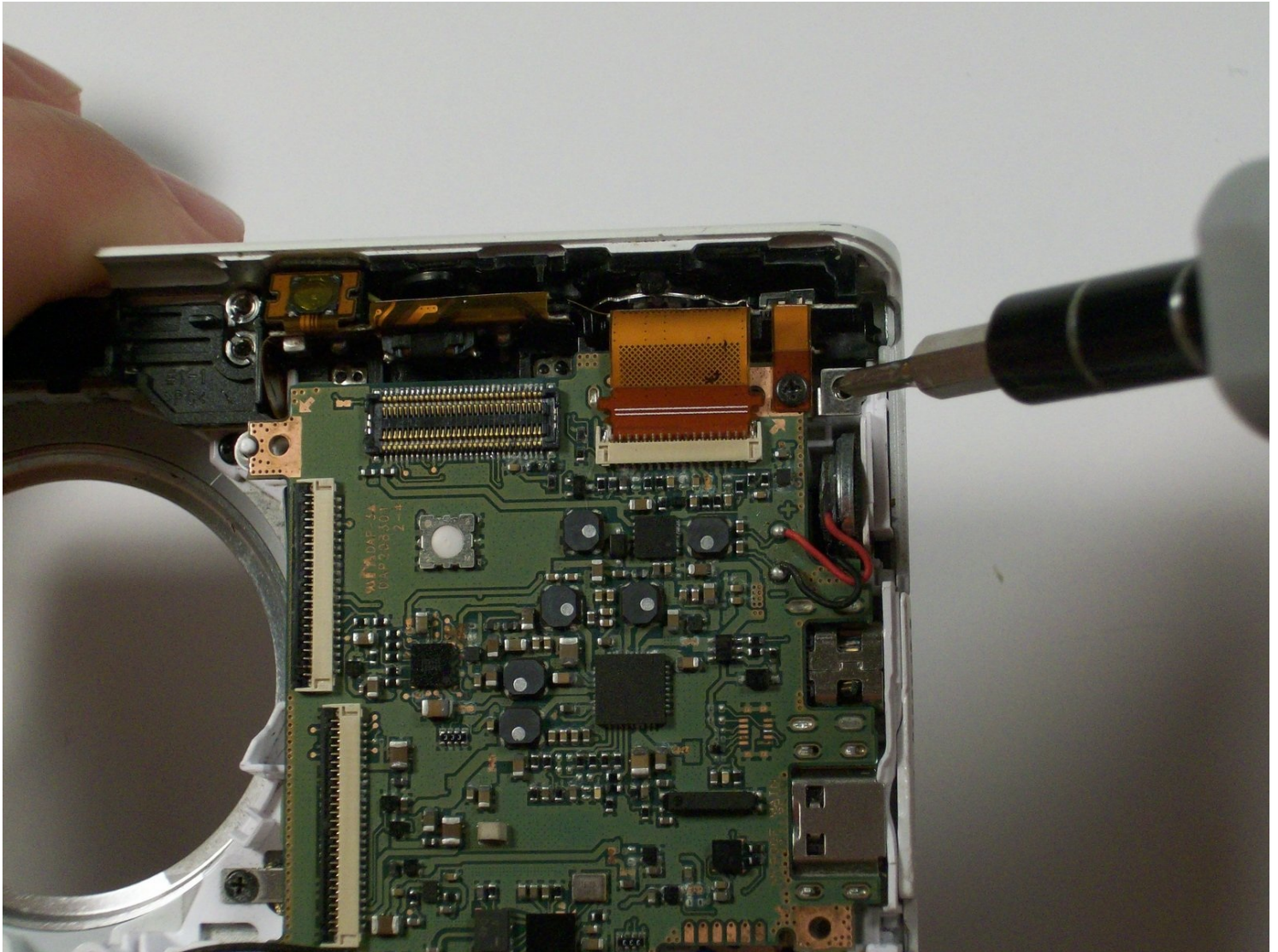




# Samsung MV900F Flash Bulb Assembly Replacement

Written By: Justin Smith



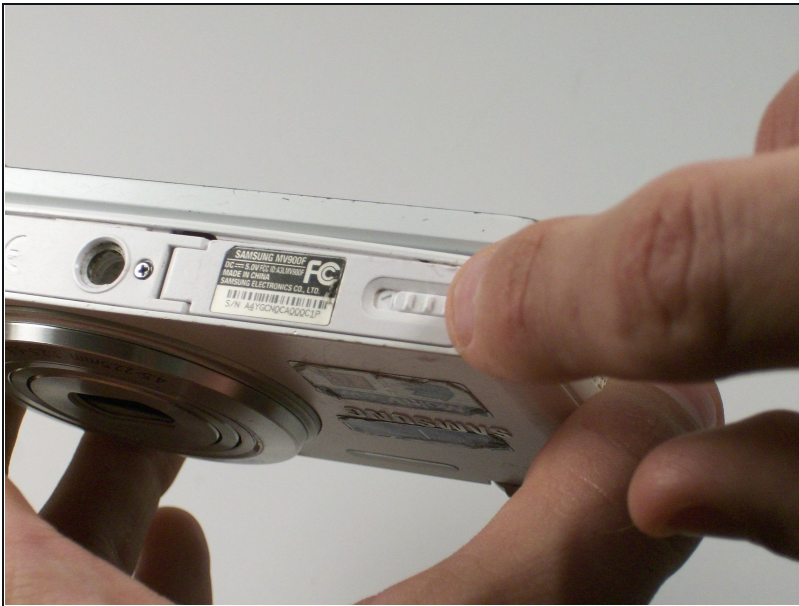
## TOOLS:

Phillips #00 Screwdriver (1)  
iFixit Opening Tool (1)  
Tweezers (1)

## PARTS:

Samsung MV900F flash bulb assembly (1)

### Step 1 — Battery



- Slide the lock towards the middle of the camera, in the same direction of the arrow.

### Step 2



- Push the blue battery holder up in the direction of the arrow.

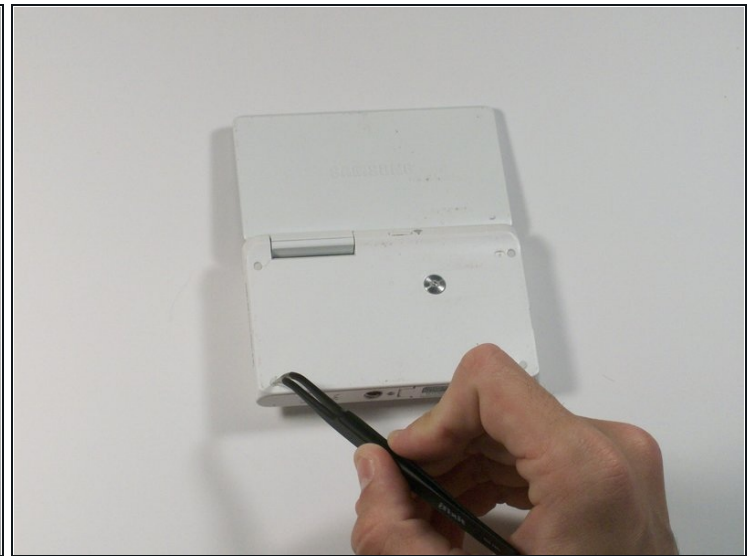
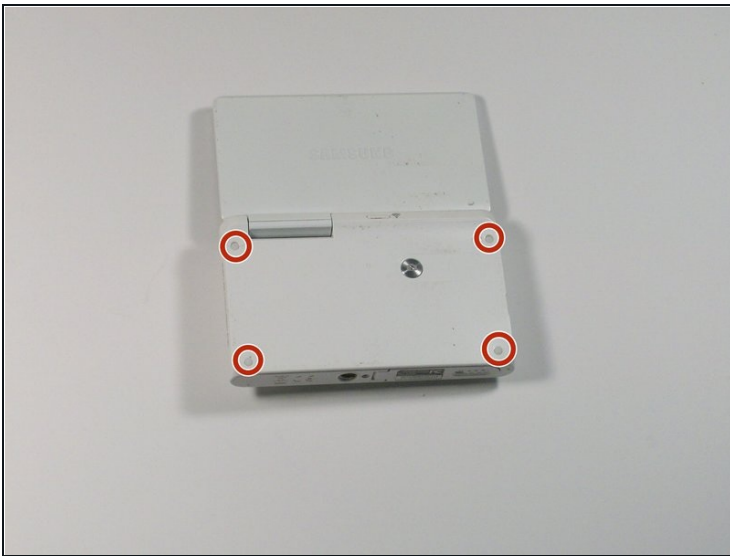


### Step 3



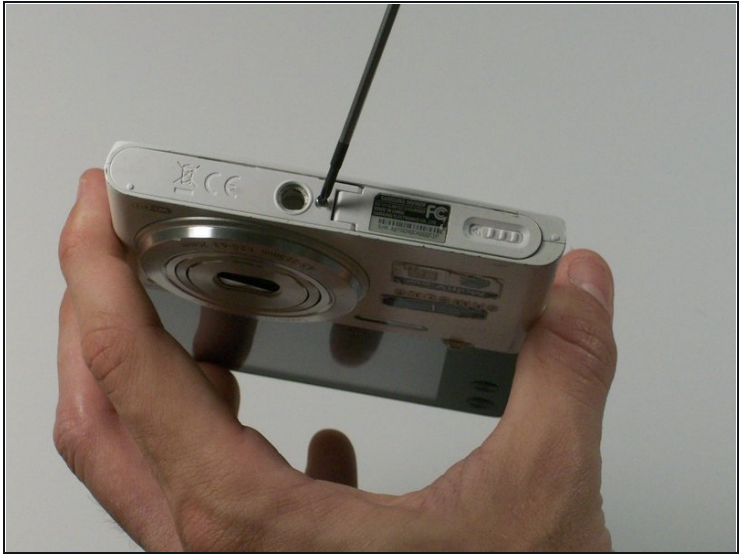
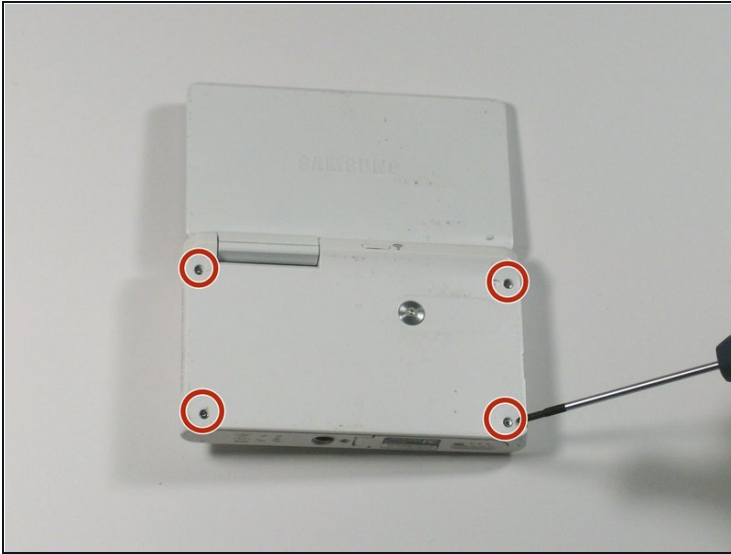
- Pull the battery out of the battery slot.

### Step 4 — Screen



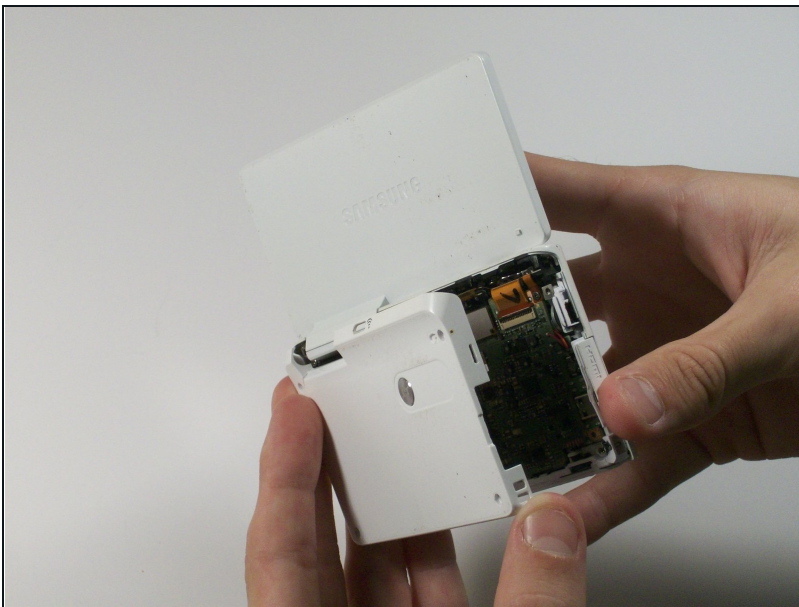
- Use [tweezers](#) to remove the four rubber screw covers.

## Step 5



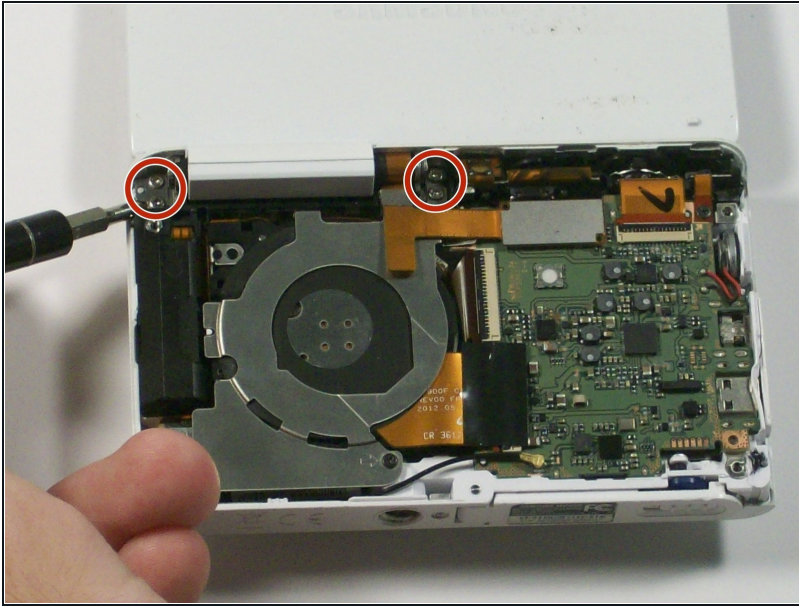
- Remove the four Phillips 2.381 mm screws on back side of camera and one Phillips 2.381 mm screw on the bottom of the camera, using a Phillips #00 screwdriver.

## Step 6



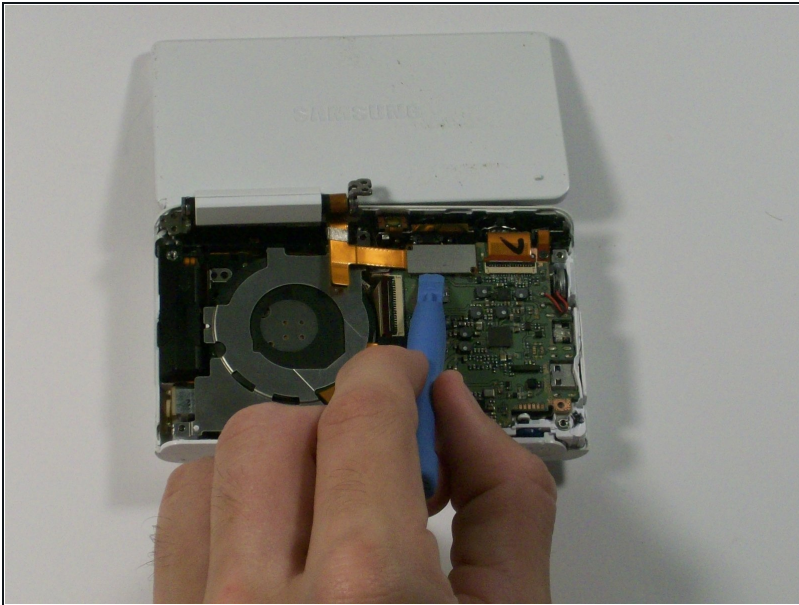
- Remove the back casing by just carefully pulling the casing off of the camera.

## Step 7



- Use the Phillips #00 screw driver to remove the four 2.381 mm screws next to the screen hinge.

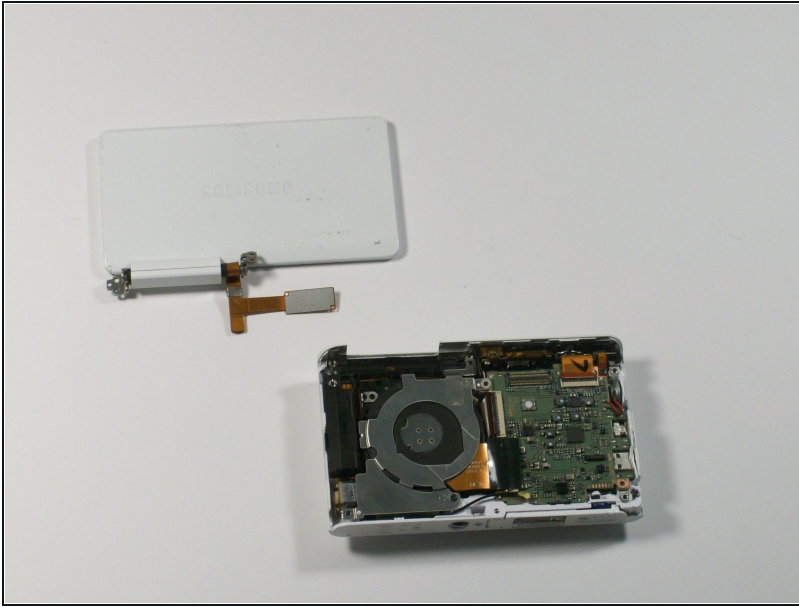
## Step 8



- Use plastic opening tool to disconnect screen connector from the control board.

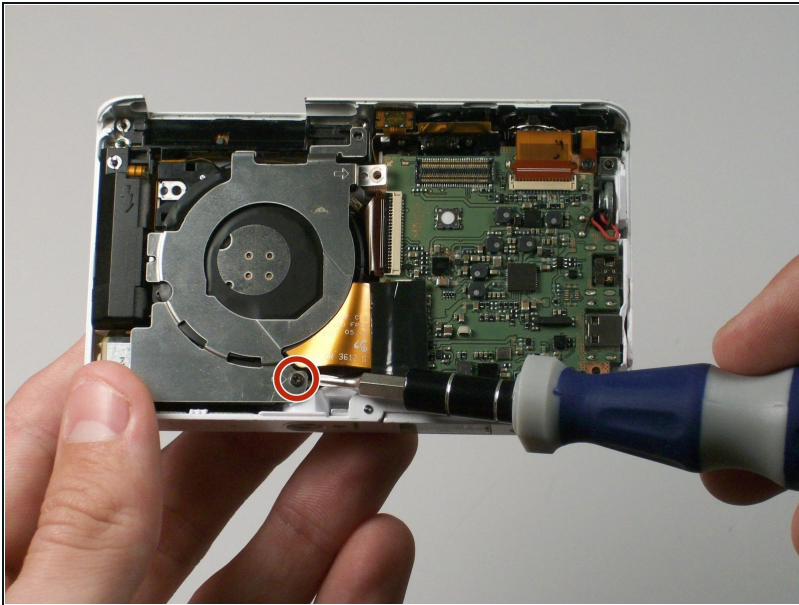


## Step 9



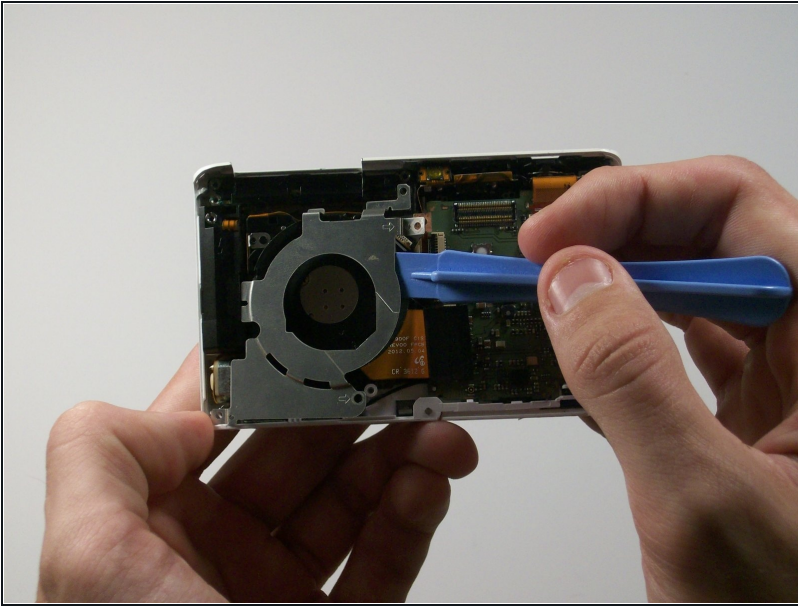
- Remove the old screen.

## Step 10 — Lens Assembly



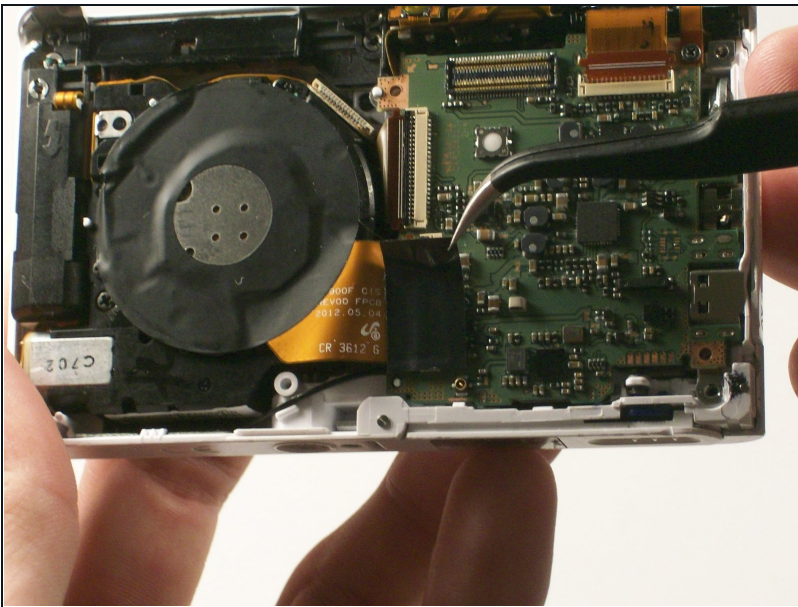
- Remove the 2.381 mm screw with a Phillips #00 screwdriver.

## Step 11



- Use the plastic opening tool to remove the silver metal lens cover.

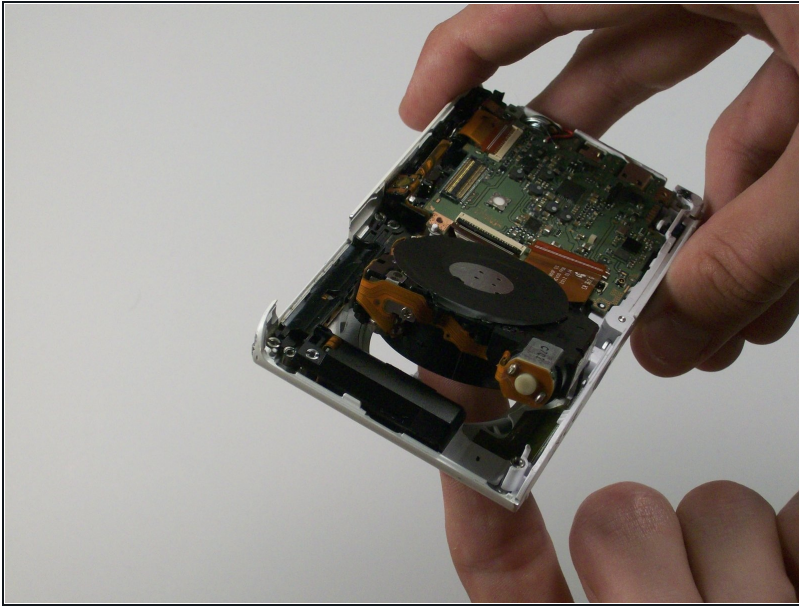
## Step 12



- Use the [tweezers](#) to remove the black electrical tape covering the copper connector to the control board.

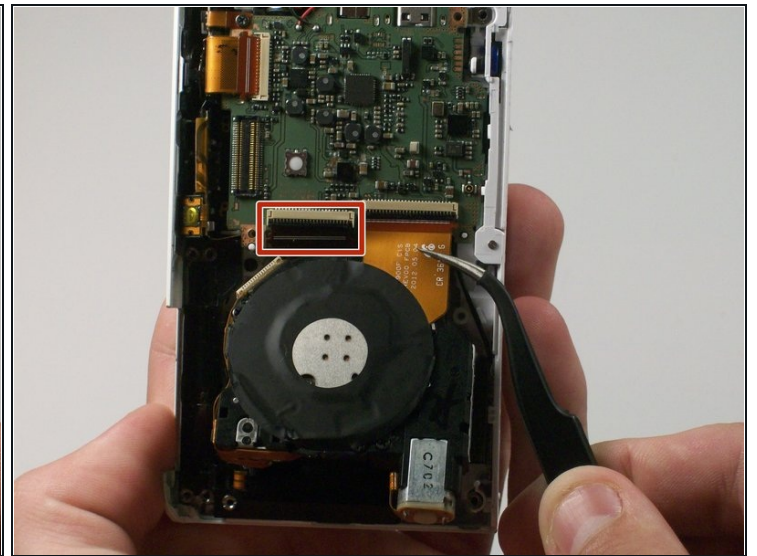
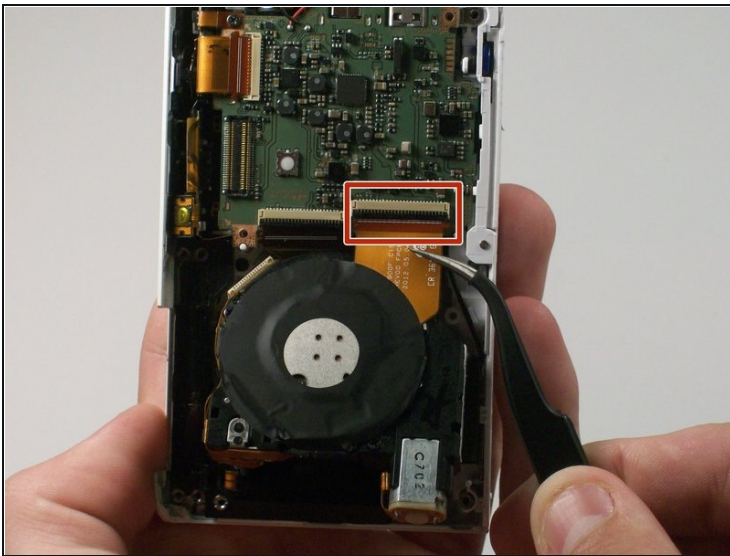


## Step 13



- From the front of the camera, push the lens through the back of the camera.a

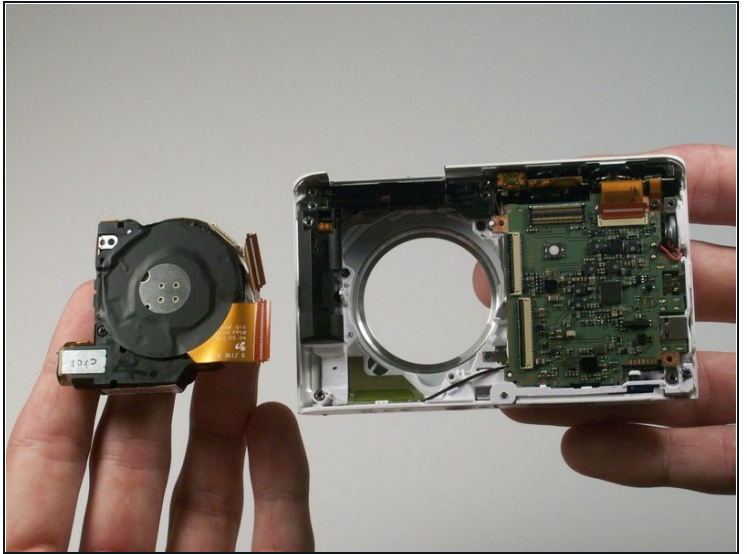
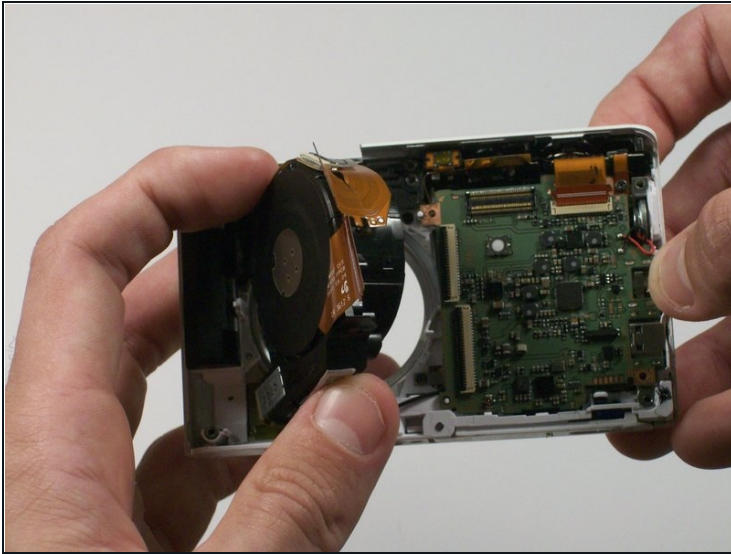
## Step 14



- Use a pair of tweezers to flip up the black retaining bar on each of the two ZIF connectors.

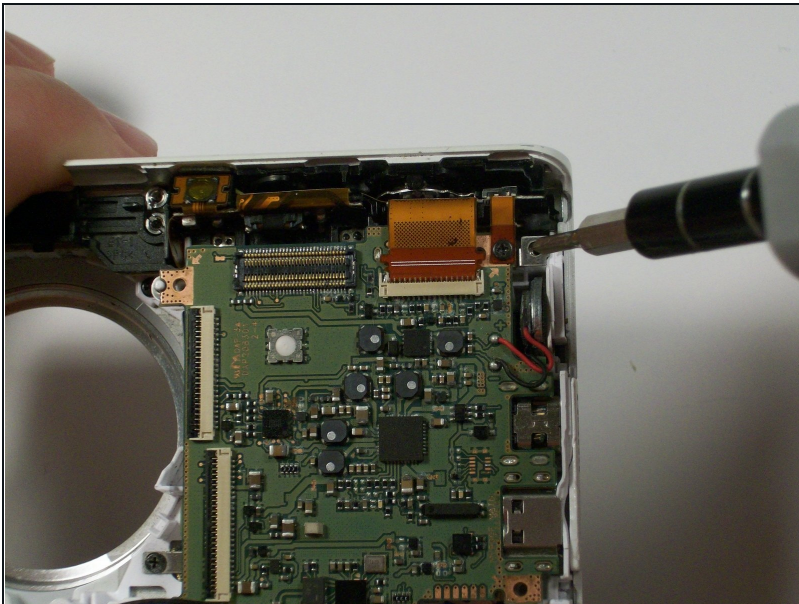


## Step 15



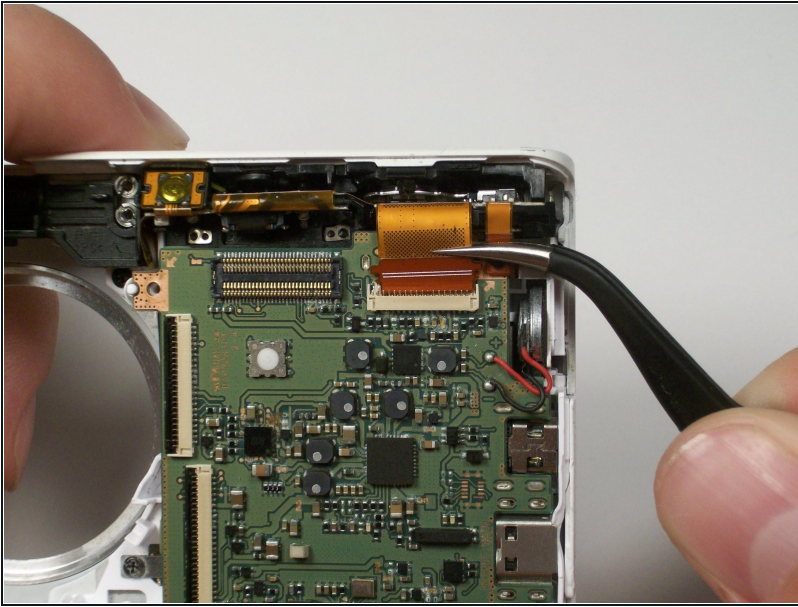
- Remove the lens assembly from the camera.

## Step 16 — Flash Bulb Assembly



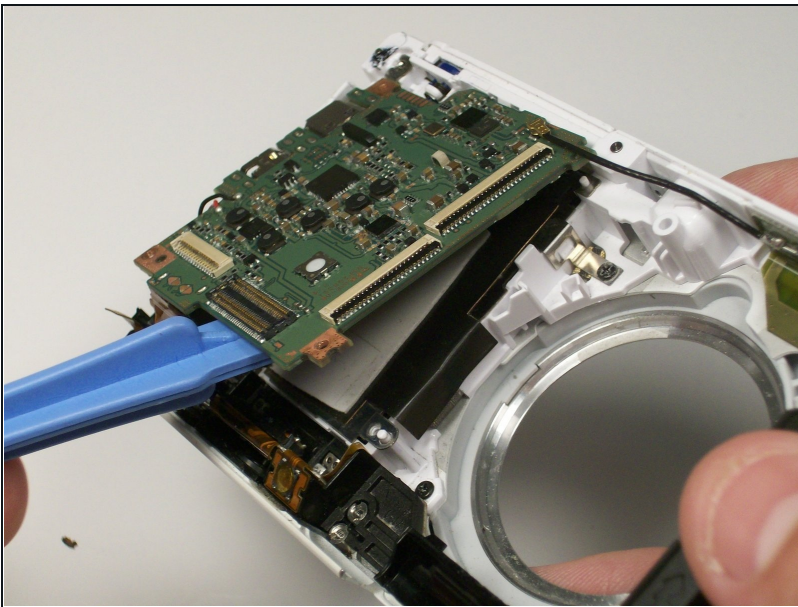
- Remove the 2.381 mm screw that is holding the copper to the control board with a Phillips #00 screw driver.

## Step 17



- Use [tweezers](#) to pull copper connector from the control board.

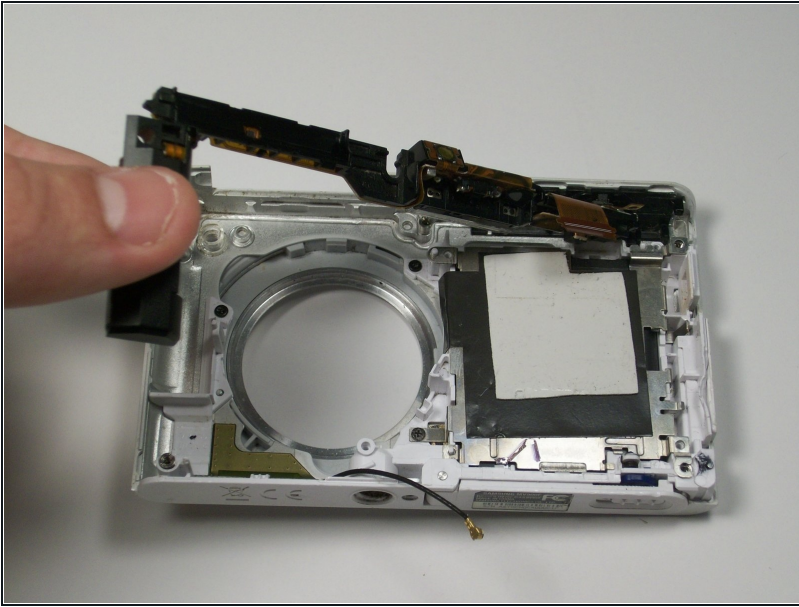
## Step 18



- Use the plastic opening tool to pry the control board up, thus allowing the flash bulb assembly to be removed.



## Step 19



- Beginning with the battery on the side, gently pull upwards to remove the entire flash bulb assembly.

---

To reassemble your device, follow these instructions in reverse order.