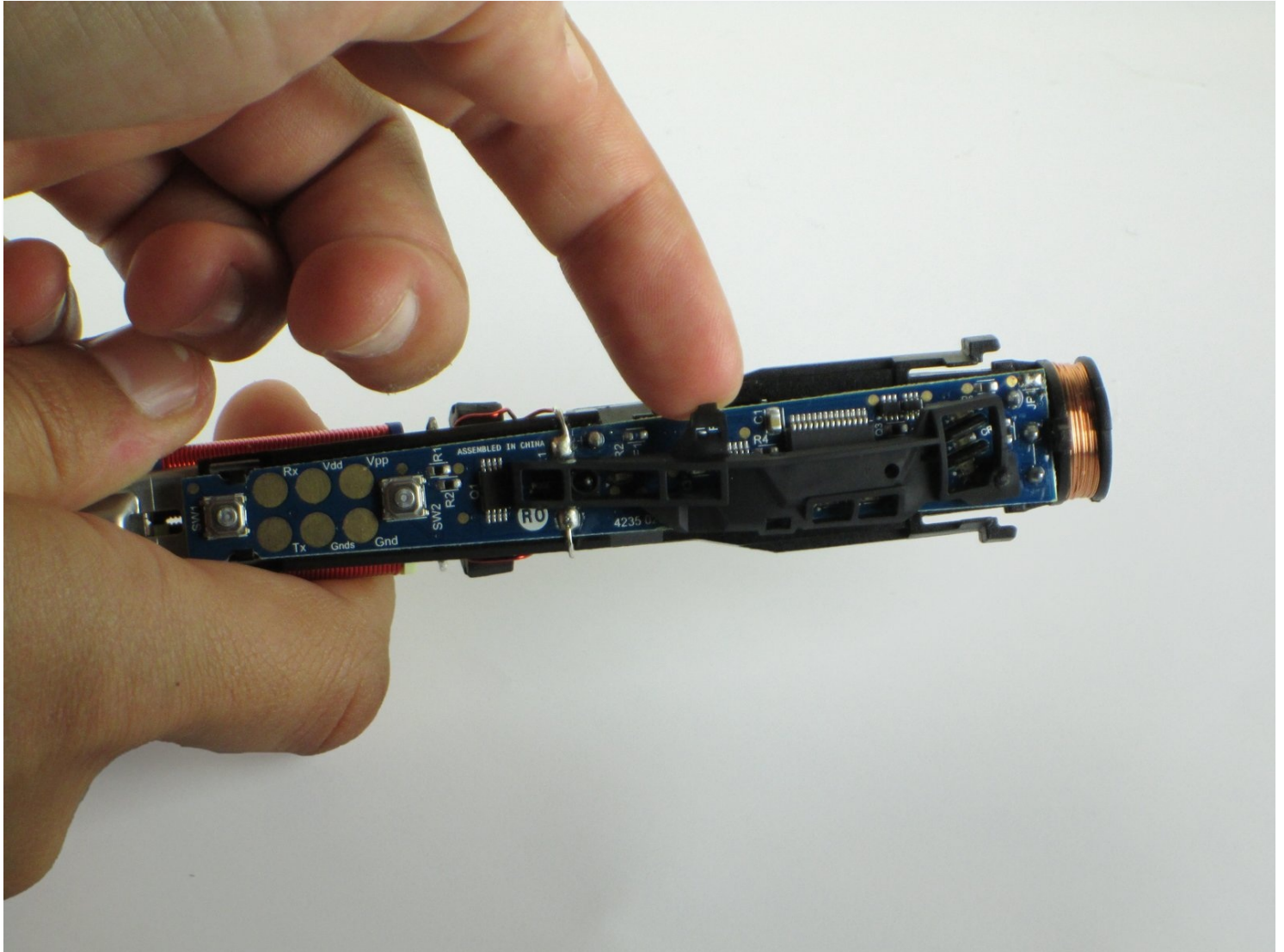




# Philips Sonicare FlexCare Battery Replacement

Here is how to replace the rechargeable battery...

Written By: Joanna Moraza



# INTRODUCTION

Here is how to replace the rechargeable battery in the Phillips SoniCare FlexCare. This is a difficult repair, be careful. If you see a swollen battery, follow the instructions here: [What to do with a swollen battery](#).

---

## TOOLS:

Soldering Iron 60w Hakko 503F (1)  
Metal Spudger (1)  
Spudger (1)  
Lead-Free Solder (1)  
Desoldering Braid (1)

## PARTS:

Sonicare Flexcare/Flexcare+/Healthy White/DiamondClean Battery (1)

---

## Step 1 — Battery



- Pull the brush head away from the handle to remove it.

## Step 2



- Push the flat edge of a metal or nylon spudger between the seal and the toothbrush body and pry it open. Do this all around the edge until the seal is partially sticking out.
- Have a look to an [alternative opening procedure](#).

## Step 3 — Do not press on the shaft!



⚠ The previous version of this step told people to press on the shaft until the electronics were exposed. **DO NOT DO THIS**, it can snap locking tabs off

- Using a small flathead screwdriver, release the two black locking tabs holding the internals in place
  - Slide the internals out of the toothbrush casing
- ⓘ Until this step is updated with new pictures, scroll down to step 5 to see the two tabs

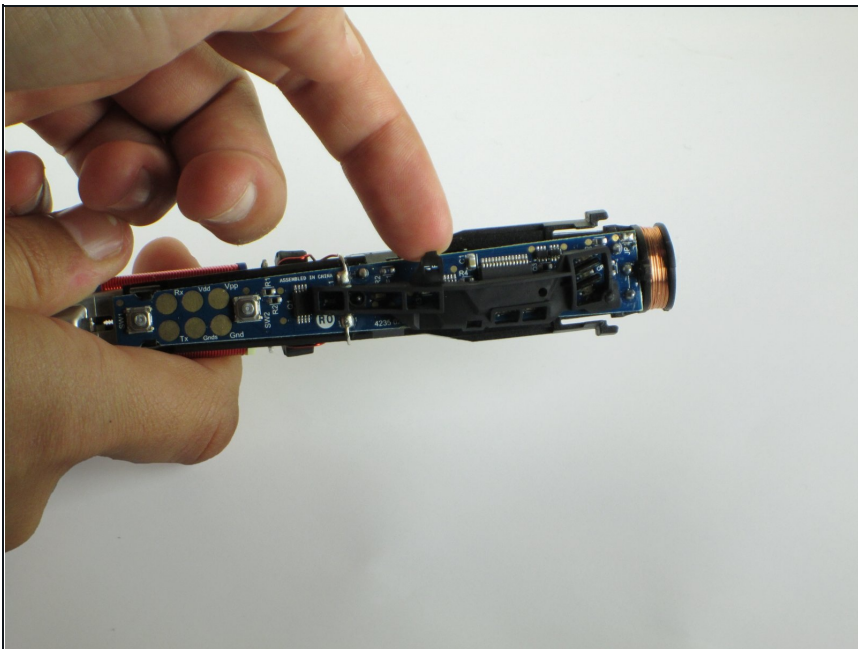


## Step 4



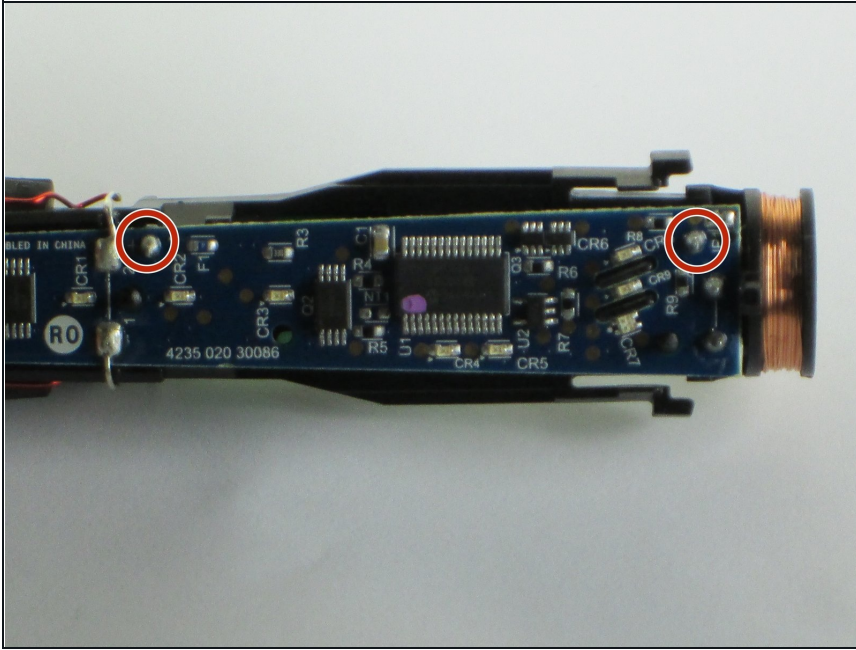
- Grab the circular, plastic base with the o-ring and pull it outward.

## Step 5



- Remove the cap that is attached to the end of the interior by removing the two clasps that are holding it in place.

## Step 6



- Desolder the battery from the circuit board. Here is a guide on [how to desolder](#). Remove the old battery and replace it. Using the same guide, solder the battery in place.
- The soldering points are shown in red.

To reassemble your device, follow these instructions in reverse order.