



Disassembling IBM ThinkPad A30 Display Assembly

This guide will instruct you to remove your LCD

Written By: Jessica



INTRODUCTION

Prerequisite: Battery, Uppercase removed



TOOLS:

- [Phillips #0 Screwdriver](#) (1)
 - [Phillips #1 Screwdriver](#) (1)
-

Step 1 — Battery



- ❗ Flip the ThinkPad over so that it is upside down.
- Slide the highlighted tab to the left.
- With your finger on the tab, remove the battery by lifting it upwards away from the laptop.

Step 2 — Hard Drive



- Remove the highlighted screw with a Phillips #1 screwdriver.
- Pull the hard drive out.

Step 3 — Upper Case



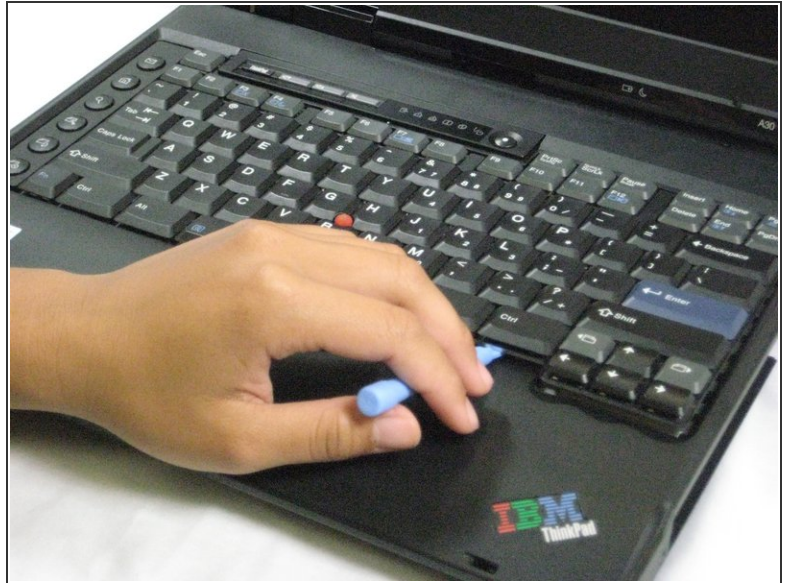
- **i** Make sure the laptop is upside down and oriented in the direction shown.
- Remove the six 16.7mm screws inside the circled holes.

Step 4



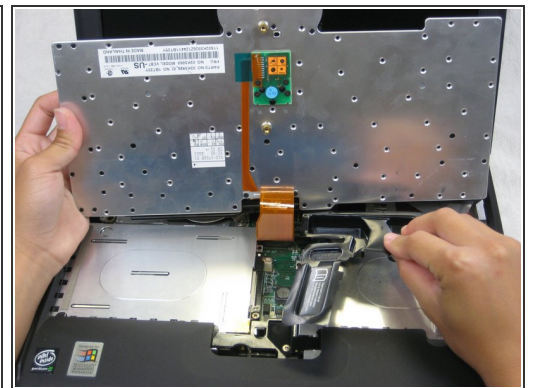
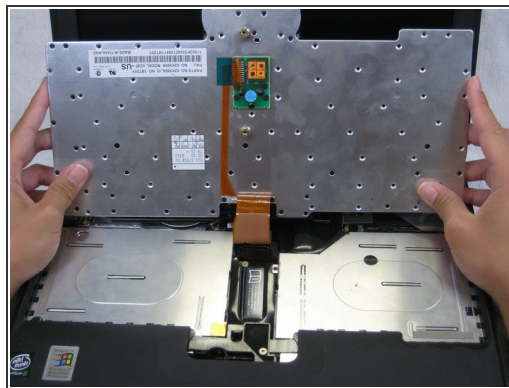
- Rotate the ThinkPad so that the hard drive bay is facing you.
- Remove the black cover to reveal a 14.8mm screw.
- Remove the uncovered screw with a Phillips #0 screwdriver.

Step 5



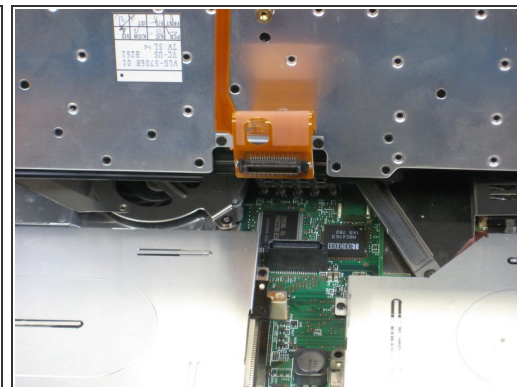
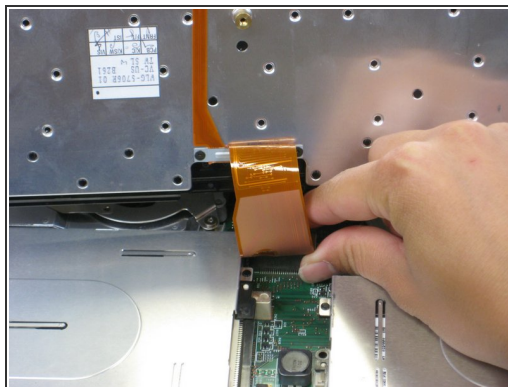
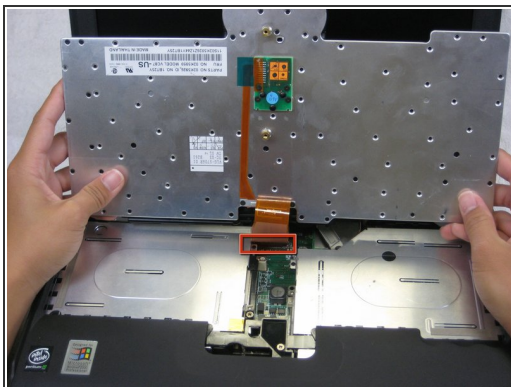
- ❗ Flip the ThinkPad over and open the LCD panel.
- Pry apart the keyboard with a plastic opening tool or with your fingers.

Step 6



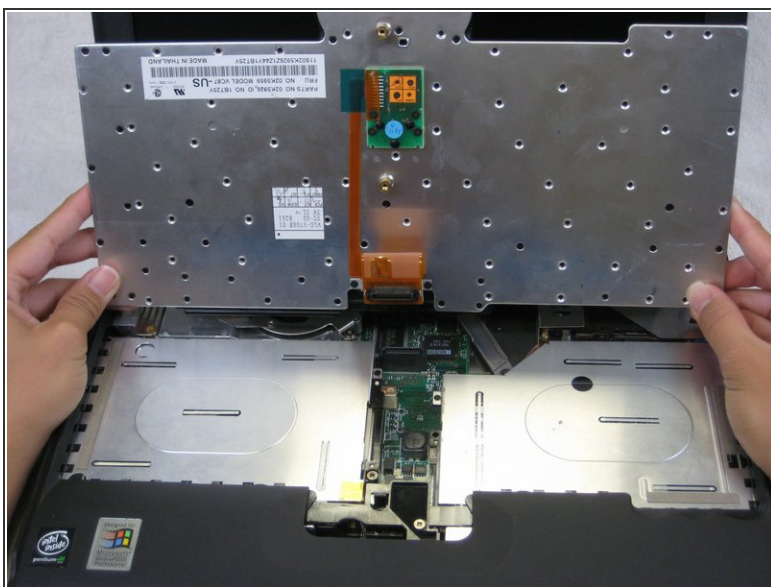
- ⚠ Be careful not to pull out the keyboard carelessly; there is a connector underneath it!
- Lift the front end of the keyboard as shown.
- Using your fingers, remove the black film cover.

Step 7



- Locate the connector attached to the motherboard.
- Disconnect the ribbon cable by removing the connector.

Step 8



- Lift and remove the keyboard.
- Remove the two 5.6mm screws.
- Remove the 16.7mm screw.

Step 9



⚠ You will need to use a little force. Be wary of the tabs.

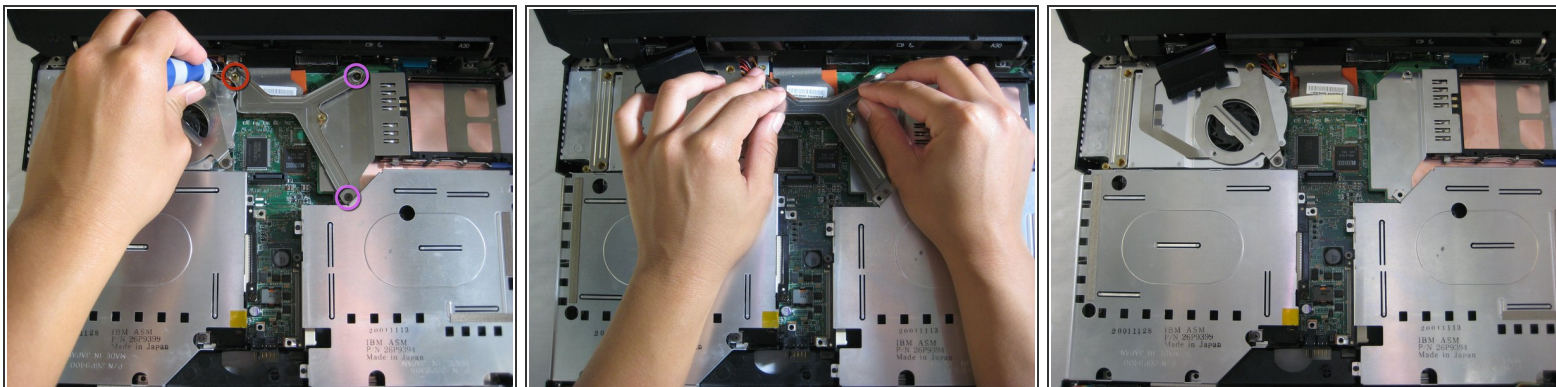
- Pry off the upper case with your hands.

Step 10 — Display Assembly



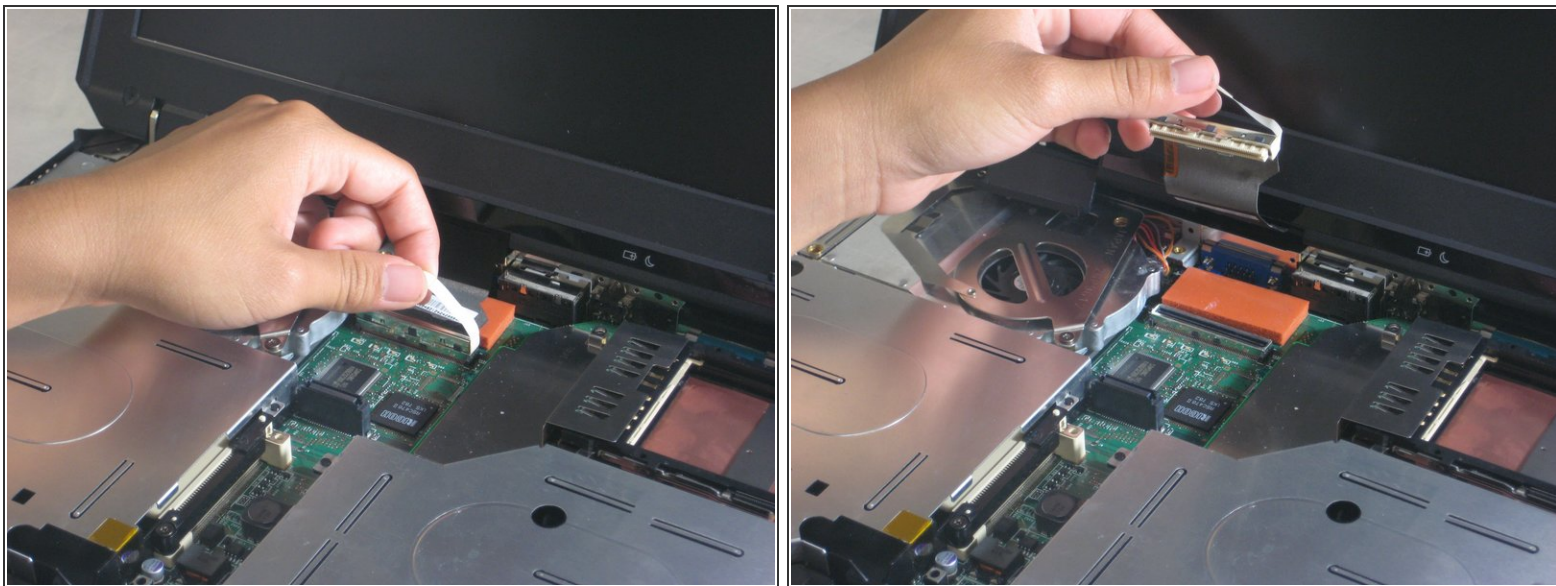
- Remove the 5.6mm screw that holds the LCD to the upper case.

Step 11



- Remove the 5.6mm screw on the left side of the three-pronged connector.
- Remove the other two 16.7mm screws.
- Lift and remove connector.

Step 12



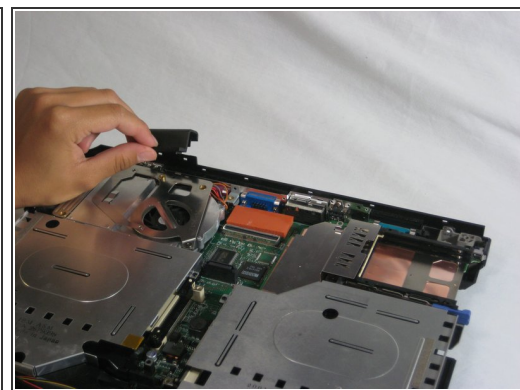
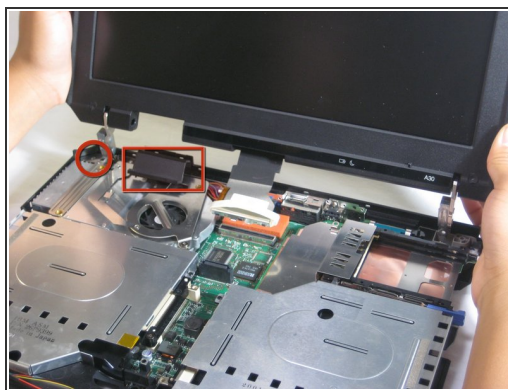
- Pull out the white tab connecting the LCD to the motherboard.

Step 13



- Turn the laptop so that the back is facing you.
- Remove the four 5.6mm long screws.

Step 14



- ⓘ Place the laptop so that the LCD is facing you again.
- Gently lift the LCD monitor up and out.
- Remove the black plastic tab.

To reassemble your device, follow these instructions in reverse order.

This document was generated on 2020-11-28 02:01:39 AM (MST).

