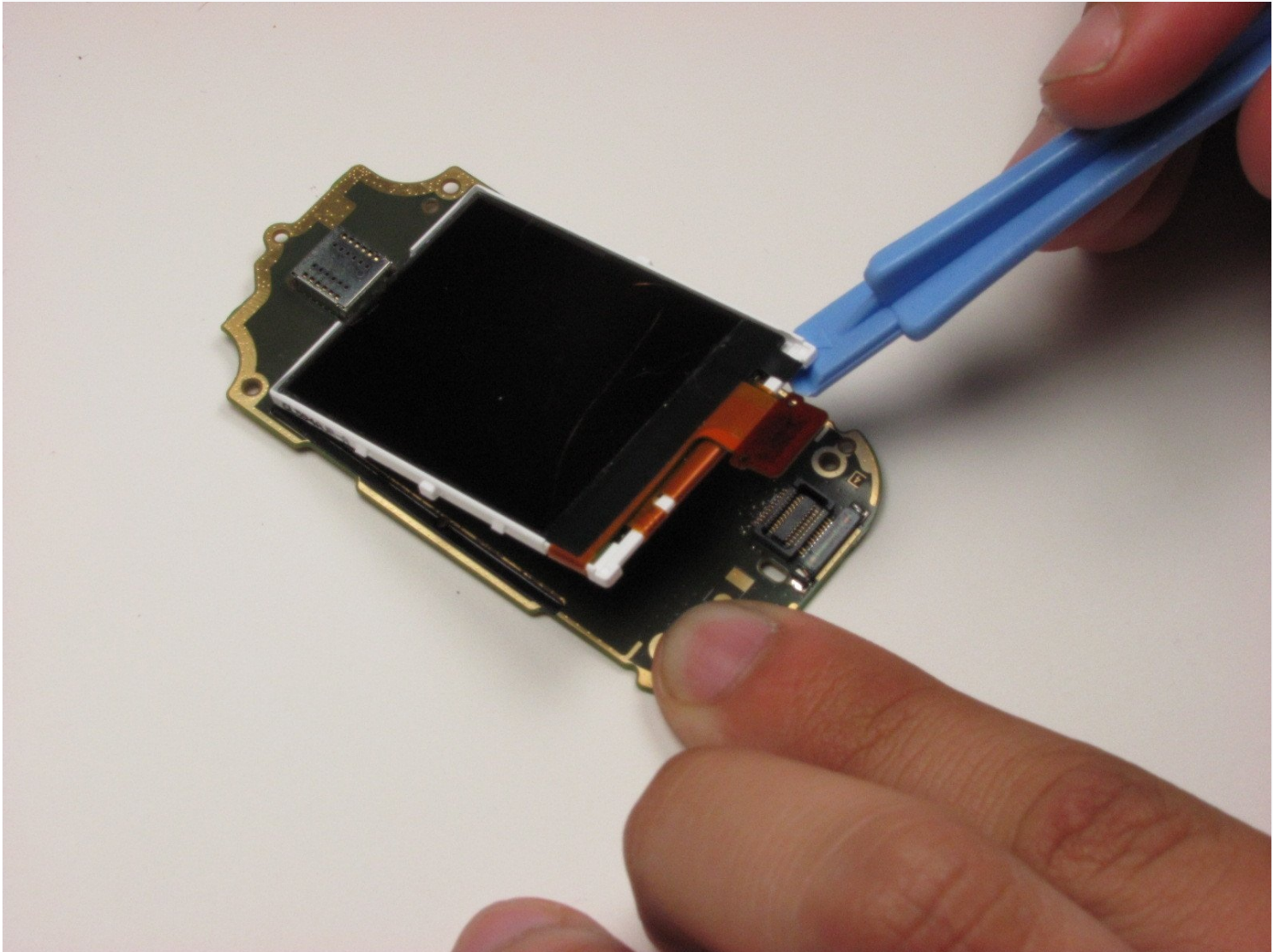




Nokia 6085h Inner LCD Replacement

This guide provides instructions on how to...

Written By: Brett Balcer



INTRODUCTION

This guide provides instructions on how to locate the inner LCD display on a Nokia 6085h phone for removal, replacement, and/or repair.

This project is intended for Nokia 6085h users who need to replace the inner LCD display on the phone if it is found to be defective or is causing some malfunctions on the LCD display. Users who encounter similar issues can look for the inner LCD display on the phone and replace it by following the instructions provided in this guide. Fixing the LCD display on your own can help you save on repair costs, and this guide will cover everything you need to know to do that.

In order to successfully perform all the tasks described below, some specific equipment and prerequisites are needed to safely handle the delicate parts of the phone. Please keep in mind that this guide requires close attention to detail and caution when performing the tasks to avoid damaging the delicate components of the phone and to prevent injuries. Make sure to power off your phone completely and disconnect from any external power source prior to beginning this guide.

TOOLS:

[iFixit Opening Tool](#) (1)

[T6 Torx Screwdriver](#) (1)

Step 1 — Battery



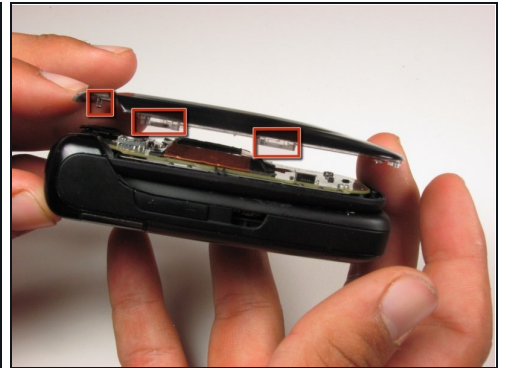
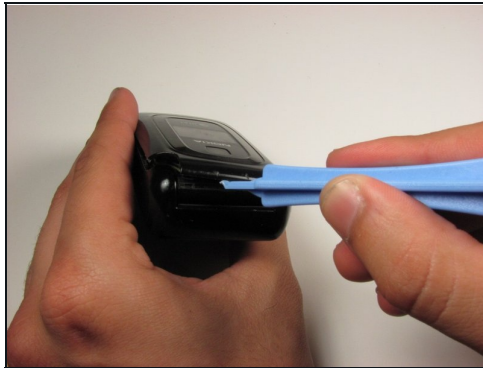
- Flip over the phone so that the back is facing up.
- Pressing your thumb against the back cover, slide the cover off of the phone.

Step 2



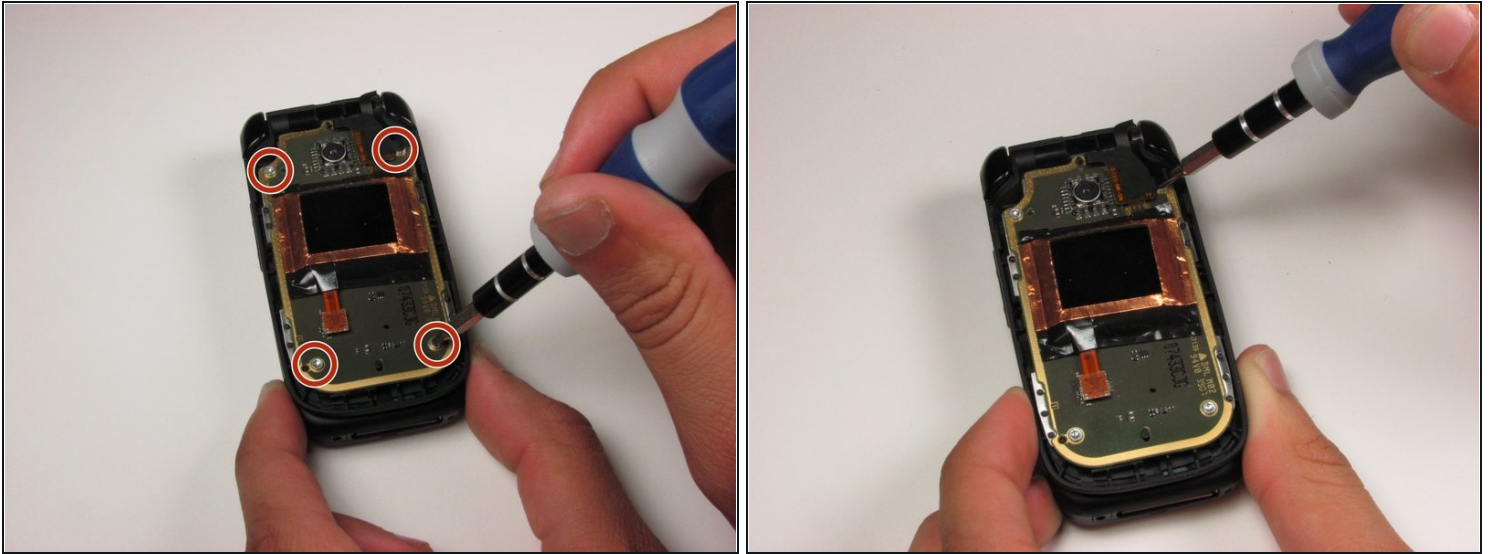
- Remove the phone's battery.

Step 3 — Front LCD Display



- With the phone closed, run a plastic opening tool along the seam of the top half of the phone.
 - Make sure to disconnect each of the five clips before proceeding to the next step.
- ① There are two clips on each side of the phone and one on the top.

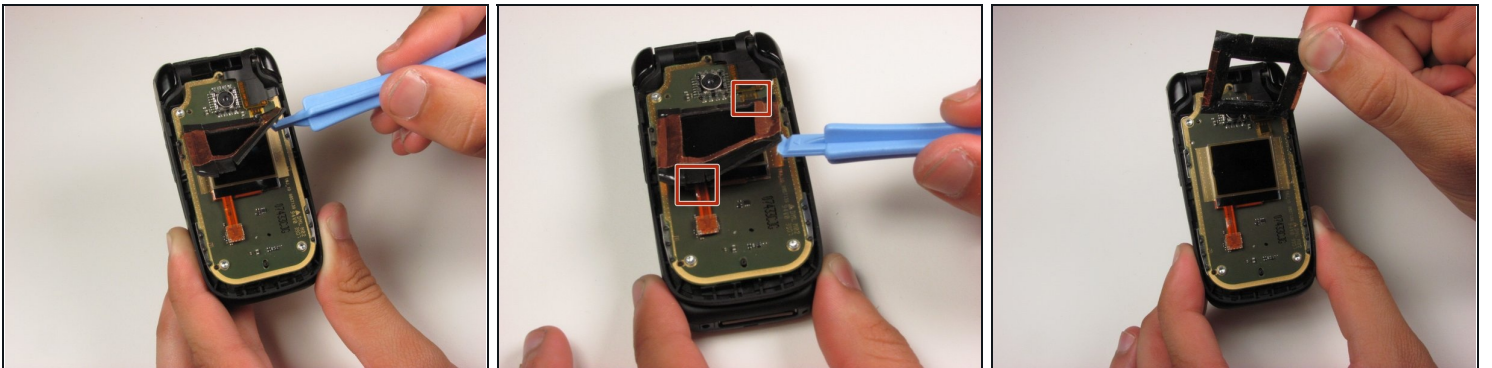
Step 4



- Remove the four 3.2 mm screws from the front panel using a T6 Torx screwdriver.

ⓘ The fourth screw is located under a fold in the ribbon cable.

Step 5

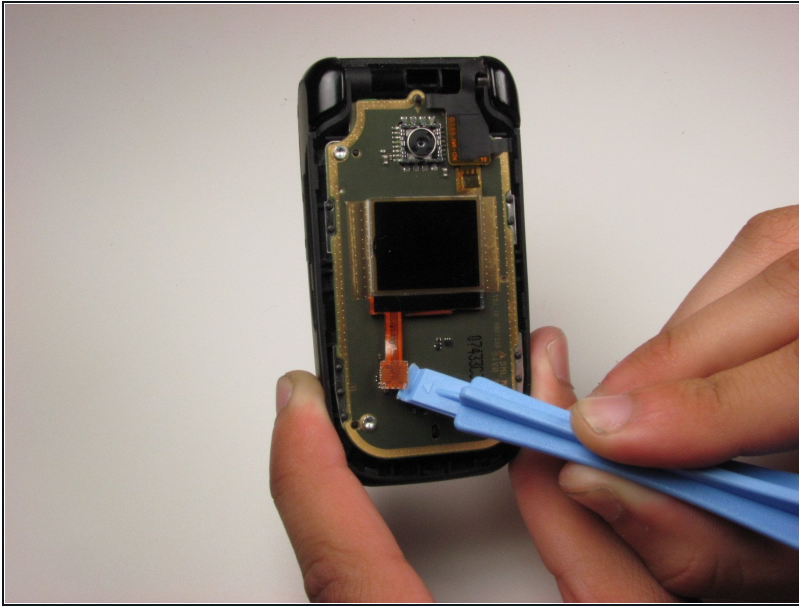


- Starting in the lower right corner, slowly begin to lift the tape that is holding down the front LCD and cables.

⚠ Be careful around the two ribbon cables attached to the tape. These cables are fragile.

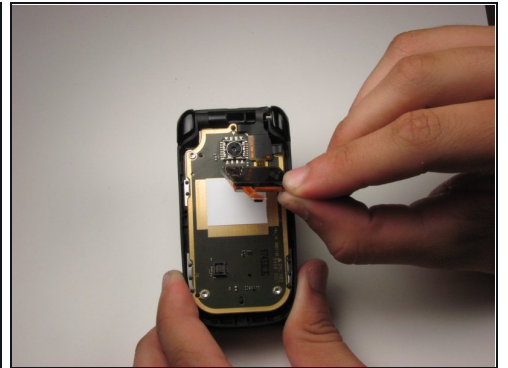
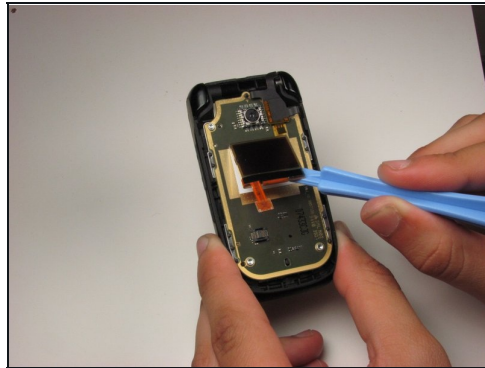
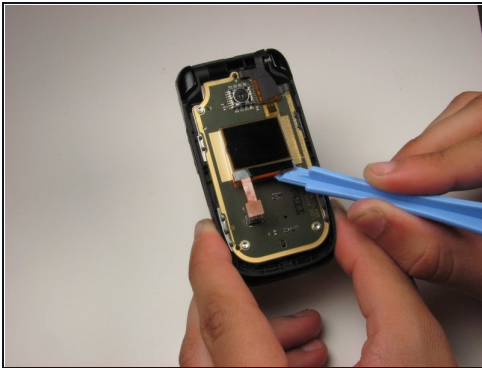
- Lift the tape from the board.

Step 6



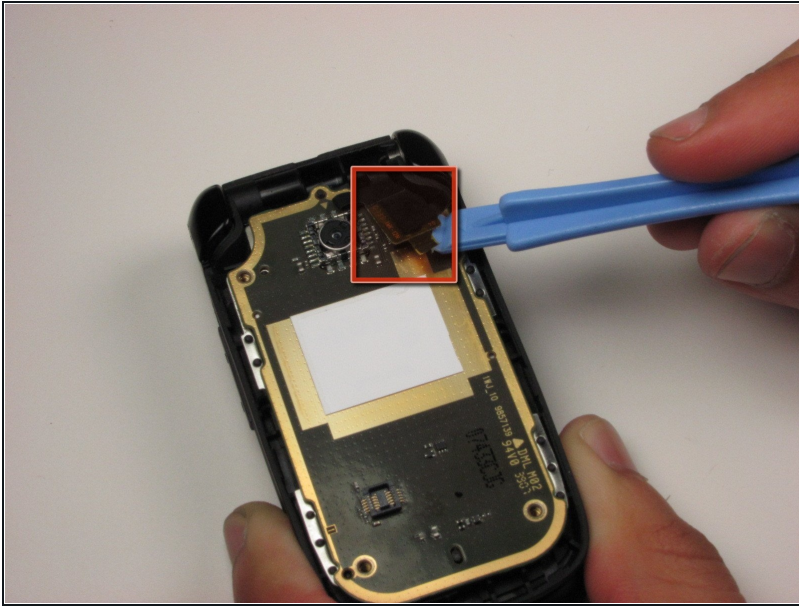
- Using a plastic opening tool, lift the ribbon cable connection below the front LCD.

Step 7



- Using a plastic opening tool, slowly pry the LCD display from the bottom, releasing it from the glue that is holding it to the board.

Step 8 — Inner LCD Display



- Locate the ribbon cable connection in the upper right hand corner of the board.
- Using a plastic opening tool, lift off the cable from the board.

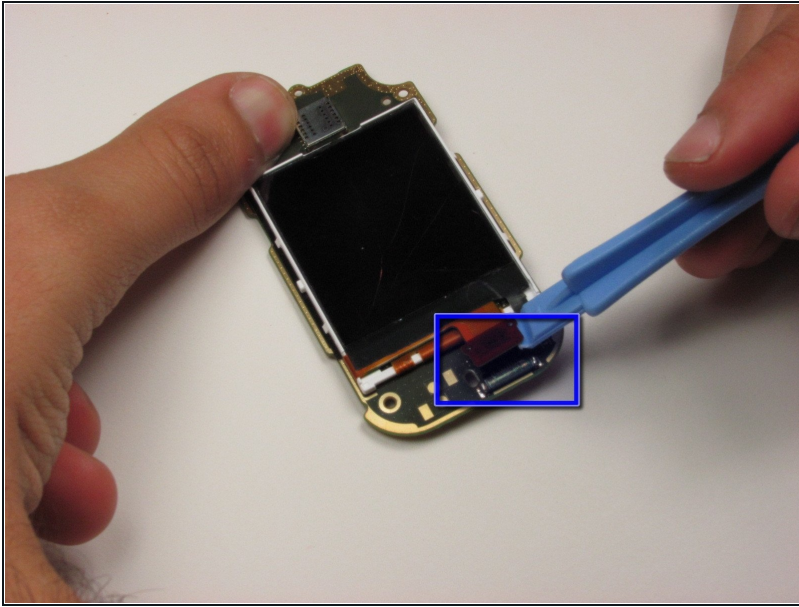
⚠ Be gentle and make sure not to rip the ribbon cable.

Step 9



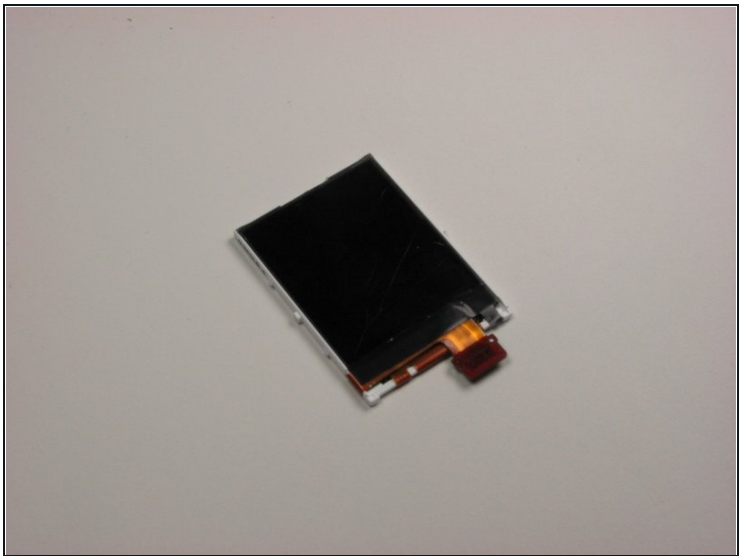
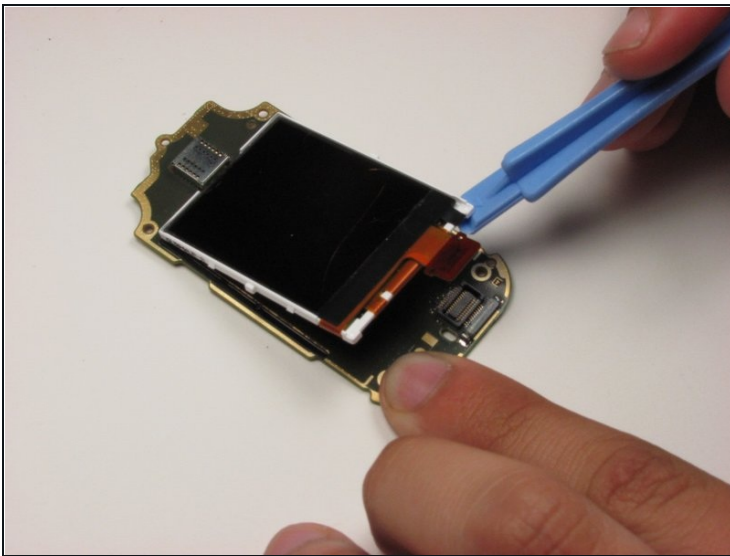
- Using a plastic opening tool, slowly work the board off the mounts holding it to the frame.
- Flip the board over to reveal the main display.

Step 10



- Locate the ribbon cable for the main display on the bottom of the board.
- Slowly lift off the ribbon connector from its housing using a plastic opening tool.

Step 11



- Slowly wedge the plastic opening tool under the bottom of the main display.
- Separate the display from the glue lifting it off the board.

To reassemble your device, follow these instructions in reverse order.